

## Local May Co. to Inaugurate 'May Mart' Shopping Tuesday

May Co.'s store at the South Bay Shopping Center has taken on a new look. It's a self-service section complete with push carts and checkout stands.

Located on the store's lower

level, John Preis, manager, said it is a new venture, for May Co., into low cost distribution.

MAJOR DEPARTMENTS re-

presented include women's fashions, accessories, infants, children's and boy's wear, men's clothing and furnishings, toys, sporting goods, home furnishings and housewares.

This new concept of merchandising, plus all the May Co. department store advantages including regular accounts and home delivery service, Preis said.

CLERKS ARE dressed in red vests and stationed through the section, called the May Mart, to help customers and answer questions. Twelve checkout stands are provided for quick service.

Entry to the new section is gained by taking the escalator or elevator from the ground floor.

MAY CO. is the first major department store in the Los Angeles basin to have a self-service section. The store at the South Bay Shopping Center and two others, Eastland in West Covina and Lakewood, have been selected to serve as pilot ventures.

"THE LOCAL store was chosen to serve as one of the pilot establishments because of the great faith in the buying power in the south bay area," Preis said.

Four or five major department stores throughout the nation have been experimenting with self service centers but May Co. is the first in the Los Angeles area.

"WE STILL plan on continuing our present merchandising policies on the upper floors," Preis added.

The manager said comments about the self service center have been very good, especially on the extraordinary values.



NEW FEATURE . . . Twelve checkout stands feature fast service for customers at the May Co.'s new May Mart located on the lower level of the May Co. store at the South Bay Shopping center. The self service center is a new venture for the May Co. (Herald Photo)

# HIGHEST EARNINGS ON INSURED SAVINGS

## PAID FOR THE QUARTER ENDING SEPTEMBER 30, 1961

The funds placed or retained in Southwest Savings accounts earned a new high rate of return consistent with insured safety. For the quarter ending September 30, 1961, Southwest Savings added an extra  $\frac{1}{4}$  of 1% bonus. Dividends were thus increased from a current annual rate of  $4\frac{1}{2}\%$  to  $4\frac{3}{4}\%$  for the third quarterly period this year. For high-profit returns...why don't you move your funds to Southwest Savings. Open an account—today—in person or by mail.

- each account insured up to \$10,000 by the Federal Savings and Loan Insurance Corporation, a permanent agency of the U.S. Government
- funds received or postmarked by the 10th of the month earn from the 1st
- if transportation's a problem, save a trip—and Save-By-Mail



**Southwest Savings**  
AND LOAN ASSOCIATION

INGLEWOOD: 2700 W. Manchester (at 6th Ave.)—PL. 3-2164  
TORRANCE: 1603 Cravens (at Marcelina)—FA. 8-6111

Mon. thru Thurs. 9:30 am to 4 pm; Fri. to 6:00 pm



CHILDREN'S SECTION . . . Toys, including dolls, are among the many items to be found at the May Mart. Other major departments at the self-service center includes women's fashions, men's clothing, sporting goods and home furnishings. Present merchandising policies will continue on the May Co.'s upper floors.



ONE-STOP SHOPPING . . . Most major departments are included in the May Mart which includes 45,000 square feet. Baskets and shopping carts are used at the mart. Clerks dressed in red vests are stationed throughout the store to help customers.

## CEDAR RUSTIC WESTERN SERIES HOMES

Homes with a styling that will live—with materials to match!



### THE EXECUTIVE

(one of many plans)  
Large living room with adjoining dining room . . . breakfast nook with china cabinet of natural ash, divider next to entry hall . . . convenient service porch with utility closet.



### GAFFERS & SATTLER

built-in Mark '20' electric ovens and cook tops. Two family sized ovens. Waste King colored dishwasher also furnished.

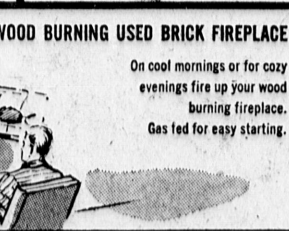
### WOOD SHAKE ROOFS

Genuine red cedar wood shake roofs. Both front and back. An exceptional quality feature.



### WOOD BURNING USED BRICK FIREPLACE

On cool mornings or for cozy evenings fire up your wood burning fireplace. Gas fed for easy starting.



### Some of the many OUTSTANDING FEATURES:

- Colored double-kitchen sinks
- Waste King disposals
- Forced air heating — thermostatically controlled
- Aluminum sliding glass doors with screens
- Acoustical type ceiling
- Pullman counter in master bath
- Ceramic tiled showers
- Slump stone — Palos Verdes
- Stone and used brick facings



FREE! ALL WOOL WALL TO WALL CARPETING

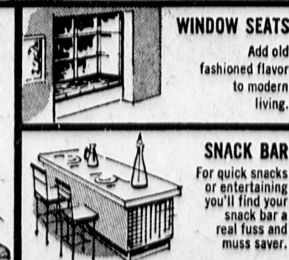
### CONCRETE PATIOS

for outdoor California living.



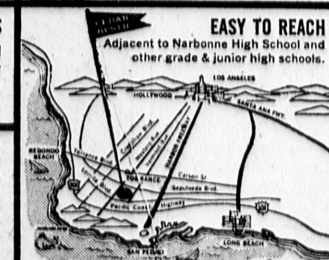
### WINDOW SEATS

Add old fashioned flavor to modern living.



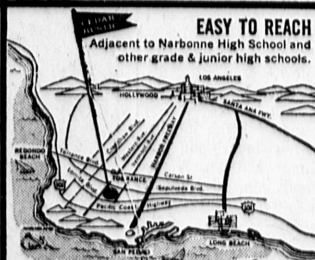
### SNACK BAR

For quick snacks or entertaining you'll find your snack bar a real fuss and muss saver.



### EASY TO REACH

Adjacent to Narbonne High School and other grade & junior high schools.



## CEDAR RUSTIC

3 BEDROOMS with 2 BATHS / 2 CAR GARAGE

CURBS SEWERS SIDEWALKS & STREET LIGHTS ALL IN!

PRICED FROM \$19,995  
LOW DOWN PAYMENT EASY TERMS