



Before or after the game... or for a tasty snack anytime... bring your date to McDonald's. You'll be glad you did when you find out just how good a 15¢ Hamburger can be. Delicious and piping hot, served on a toasted bun, it's made with 100% pure beef, government inspected, and ground fresh daily. Come in today for the tastiest food in town at extra thrifty prices.

MCDONALD'S AMAZING MENU
 Pure Beef Hamburger.....15¢
 Tempting Cheeseburger.....19¢
 Triple-Thick Shakes.....20¢
 Golden French Fries.....10¢
 Thirst-Quenching Coke.....10¢
 Delightful Root Beer.....10¢
 Steaming Hot Coffee.....10¢
 Full-Flavor Orange Drink.....10¢
 Refreshing Cold Milk.....12¢

— LOOK FOR THE GOLDEN ARCHES —

McDonald's



17305 SOUTH CRENSHAW (corner of Artesia and Crenshaw)

Vel's Ford Sales to Unveil New Line of Fords Here Tomorrow

On display in Ford showrooms tomorrow will be the 1962 line of automobiles, including Falcons, Galaxies, and Thunderbirds. Local showing of the new line will be at Vel's Ford Sales in downtown Tor-

rance and in Welteria. A crisp, fresh approach to Ford's classic straight-line styling marks the 1962 Ford line.

Accountants Elect Sells

The National Association of Accountants, Long Beach Chapter, announces the election of William Sells as vice president.

Sells, a charter member of the chapter, has been active in the organization since 1951. He is employed as chief accountant for the Torrance Unified School District and is a member of the California Association of Public School Business Officials and a member of the State Accounting Committee.

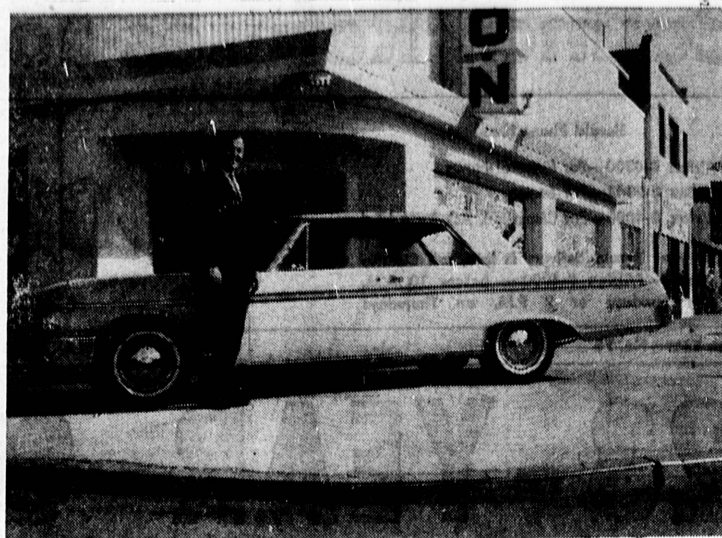
Sells is a member of Los Angeles Area Council of Boy Scouts of America and is at present dean of Merit Badge Councilors of the Harbor District and has served in Boy Scouting for more than 25 years.

THE GALAXIE will incorporate major engineering advances which reduce recommended owner maintenance to a convenient 'twice-a-year' level. The popular Galaxie is being offered in two series for the first time — the Galaxie and the Galaxie "500" series.

Sure to catch the eye of the cost-conscious motorist is the new Falcon line, led by the compact but luxurious Falcon Futura. This six-cylinder auto offers all the conveniences of driving — including a 170-horsepower engine and power transmissions—with the thriftiness of the honored Model 'T'.

TOPPING FORD'S line, as usual, is the classy Thunderbird, one of the most popular automobiles on the road.

All will be on display tomorrow at Vel's Ford Sales, at the main showroom at 1600 Cabrillo and at the Pacific Coast Highway and Hawthorne Ave. lot in Welteria.



NEW FORD HARDTOP... The racy lines of Ford's new hardtop are shown here by Vel Milovich, owner of Vel's Ford Sales, where the new models will go on display tomorrow. The Falcons, Galaxies, and Thunderbirds will lead the style parade in '62, Ford officials assert.

Bank Manager Put on Cancer Society Board

James J. Weigel, manager, Security-First National Bank, Torrance, was elected to the Los Angeles County board of the American Cancer Society at its 13th annual dinner meeting, Monday. Weigel, active in the society for many years, is

starting his second year as volunteer crusade chairman for the Torrance-South Bay-Centinel Valley areas of the county organization. Beginning her second year as a Los Angeles County board member, Mrs. Robert N. Staple-

ton, Hollywood Riviera, was elected to the executive committee of the board. She will serve as county chairman for volunteer training. In addition, Mrs. Stapleton will continue to direct all volunteer activities in the local area.

ANNOUNCING

4 1/2%

current annual rate

PLUS

BONUS DIVIDEND OF

1 1/4% OF 1%

PAID ON ALL SOUTHWEST SAVINGS ACCOUNTS
 for the quarter ending September 30, 1961

Consistent with its record of offering higher than usual savings advantages whenever possible, an extra bonus dividend of 1/4 of 1% has been declared by the Board of Directors for the quarter ending September 30, 1961. The profits on money placed in Southwest Savings accounts during this third quarter increased from a current annual rate of 4 1/2% to 4 3/4%. Why

don't you join the family of Southwest Savers by opening your account — today. Or add as much as you can spare to your existing one. If you cannot visit a Southwest Savings office in person... then Save-By-Mail. Your transaction will be handled promptly and efficiently. Funds received or postmarked by October 10th start earning from the 1st.

each account insured up to \$10,000 by a permanent agency of the U.S. Government



Southwest Savings

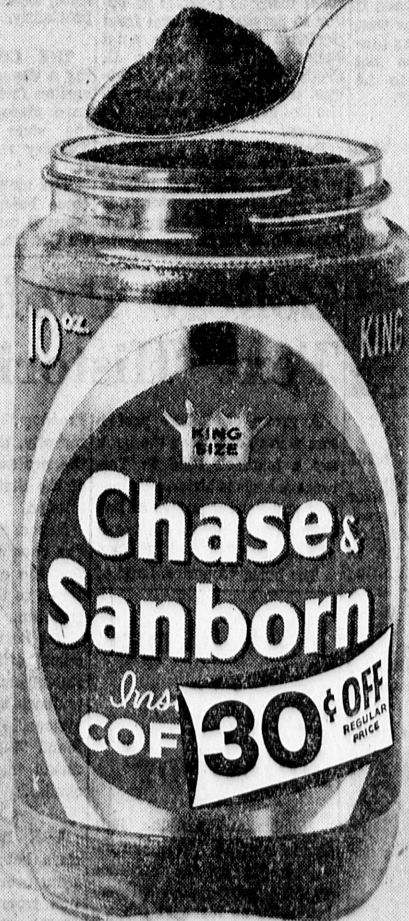
AND LOAN ASSOCIATION

INGLEWOOD: 2700 W. Manchester (at 6th Ave.)—PL. 3-2164

TORRANCE: 1603 Cravens (at Marcelina)—FA. 8-6111

9/28/61

now... SAVE 30¢ ON KING SIZE!



Fine Coffee for Nearly 100 Years!