

County Allocates \$60,000 For Calle Mayor Drainage

The Board of Supervisors has approved a \$60,000 allocation to the City of Torrance for the construction of drainage facilities and street improvements on Calle Mayor.

Supervisor Burton W. Chace, who represents the area, said the project will extend from Vanderhill Road to northeast of Mayor Drive.

This allocation is a portion of the \$5,300,000 currently budgeted by the Board of Supervisors to assist the 72 cities in the County of Los Angeles in the maintenance and construction of streets which are of general County interest.

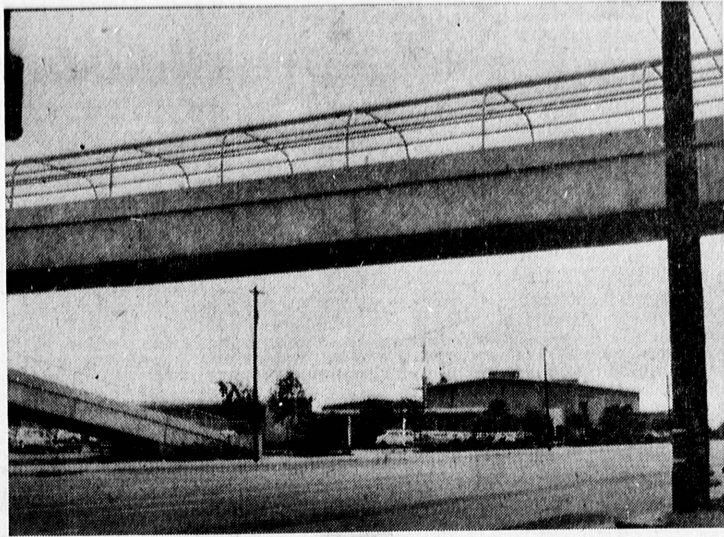
THIS FUND is replenished in proportion to the amount of Gas Tax the County receives and is proportioned among the cities according to population and Master Plan mileage.

Supervisor Chace said this \$5,300,000 and other allocations to cities represent more than 36 per cent of the total County Highway Construction Budget.

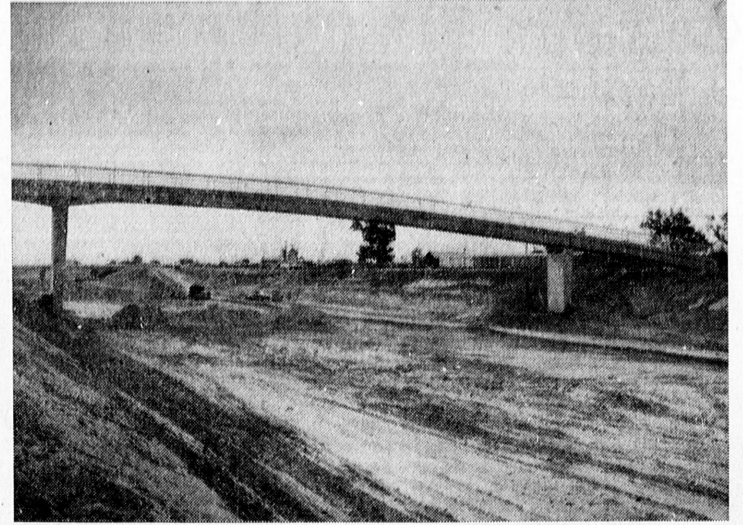
THE BOARD of Supervisors of Los Angeles County is one of the few in the State that provides financial assistance to cities from its Motor Vehicle Fund. In fact, the 1961-62 County Budget contemplates subsidies of more than \$13 million for highway programs within cities. This is nearly \$3 per capita of incorporated population.

In contrast, according to the latest State Controller's report, the average subvention of all other counties in the State to their cities is about 50 cents per capita of incorporated population.

"This type of cooperation," Chace added, "makes possible the continuous development of highway projects across jurisdictional boundaries, to add to the continuity and efficiency of our highway systems."



SAFE CROSSING . . . Students at Stephen M. White Junior High School, in background, at Figueroa and 220th Sts. do not have to worry about traffic and crossing Figueroa St. anymore with the completion of the above covered footbridge. Children at a nearby elementary school are also using the bridge.



COMPLETED FOOTBRIDGE . . . This footbridge over the Harbor Freeway has been completed and is in use. The bridge extends from 220th St. on the west, across the freeway which is under construction and scheduled to be completed early next year, and over Figueroa St. on the east. (Herald Photo)



AT PREVIEW . . . A. E. Tracy (left), Western sales manager, American Motors Corp., talks over sales plans for new 1962 Rambler line with Mr. and Mrs. A. T. Ortale, representing Al Ortale Rambler of Torrance, at the 1962 Rambler dealer announcement meeting in Oakland Thursday.

Go Everywhere SO Smartly with our Wizard **WOOL "WARDROBER"**

SHEATH DRESS + JACKET + SKIRT 19⁹⁸

You'd guess \$29
All 3 Pieces. Complete!

Yours, all yours for so little, a whole versatile wardrobe . . . in fine 100% wool in new selftone chevron weave, dashing smart!

BLACK RED BLUE A LOVELY NEW GREEN

The jacket is fully lined; the skirt seat-lined for shape-retention. 10 to 15.

Wool Capris Special! 5⁹⁸

Colors to harmonize; fully lined.

SMART SWEATERS 7⁹⁸

Wear 5 Ways

- As a SUIT
- a DRESS
- a COSTUME
- a SKIRT
- a SHORTY

Charge it, 6 months to pay

Forewyn Fashions
Foreman & Clark

DEL AMO CENTER
Hawthorne & Sepulveda Bldgs.
EAST MALL
Opposite Woolworth's
Shop Mon., Wed., Thurs., Fri.
'til 9:30 P.M. FR 1-1294

GET IN STRIDE GO CLASSIFIED

Army Specialist Five Francisco Espino Jr., whose wife, Rosemary, lives at 24804 Avalon Blvd., Wilmington, recently was assigned to the 1st Cavalry Division in Korea.

Specialist Espino, medical section chief in Headquarters Battery of the division's 82nd Artillery, entered the Army in 1948.

The 29-year-old soldier, whose parents live at 2466 W. 248th St., Lomita, attended Banning High School

ONLY 5 DAYS LEFT TO TRANSFER YOUR ACCOUNT WITHOUT LOSS OF INTEREST AND RECEIVE...

FREE GIFTS

FOR NEW SAVINGS

OPEN YOUR NEW ACCOUNT NOW OR ADD TO YOUR PRESENT ACCOUNT

8-CUP CORY COFFEE MAKER
FREE For New or Added Savings of \$500 or more

SHEAFFER PEN SET
FREE For New or Added Savings of \$500 or more

CORNING WARE
1-quart sauce pan or 7-inch skillet with cover
FREE For New or Added Savings of \$500 or more
Metal cradle or lock-on handle for pan and skillet
FREE For New or Added Savings of \$125 or more

G.E. ELECTRIC ALARM CLOCK
FREE For New or Added Savings of \$250 or more

MANNING-BOWMAN ELECTRIC HAIR DRYER WITH HOOD
(Extra-Limited supply)
FREE For New or Added Savings of \$5000 or more

BISSELL-ETTE CARPET SWEEPER
FREE For New or Added Savings of \$500 or more

THERMOS VACUUM BOTTLE
FREE For New or Added Savings of \$250 or more

WEIGHTED STERLING SILVER BUD VASE
FREE For New or Added Savings of \$500 or more
Weighted Sterling Silver Salt and Pepper Set, \$500 or More or Weighted Sterling Silver Candlesticks, \$500 or More

TRAVEL ALARM CLOCK
FREE For New or Added Savings of \$1000 or more

OR YOUR CHOICE OF MANY OTHER FREE GIFTS

You Receive:
16-pc. International Stainless or Silver Tableware \$500 or More
or Win. Rogers 12 1/2" Silver Tray \$500 or More
or 1-Gallon Picnic Jug \$500 or More
or Flashlight with Batteries \$50 or More

Hurry, all gifts limited to present supply

OR - TWICE AS MANY BLUE CHIP STAMPS
Maximum, 1086 stamps

FREE GIFT OFFER WILL END SEPTEMBER 29...ACT NOW!

- * EACH ACCOUNT INSURED TO \$10,000 BY THE FEDERAL SAVINGS AND LOAN INSURANCE CORPORATION
- * LEGAL FOR PENSION, TRUST, CORPORATE, CHURCH, UNION, FOUNDATION AND ORGANIZATION FUNDS

- * FUNDS RECEIVED OR POSTMARKED BY THE 10TH OF THE MONTH EARN FROM THE 1ST
- * MEMBER OF FEDERAL HOME LOAN BANK SYSTEM

4 1/2% AMERICAN SAVINGS

INTEREST PAID OR COMPOUNDED QUARTERLY

AND LOAN ASSOCIATION RESOURCES OVER \$300 MILLION

FOUNDED 1920 RESERVES OVER \$25 MILLION

SOUTH BAY CENTER-REDONDO • 1959 Kingsdale Ave. • FR 6-7911
(near 174th Street and Hawthorne Blvd.)

REDONDO BEACH • 205 S. Pacific Ave. • FR 9-5444 / **HAWTHORNE** • 145 N. Hawthorne Blvd. • OS 9-2581

MANHATTAN BEACH • 1130 Manhattan Ave. • FR 9-8451

WHITTIER (Main Office)
210 E. Philadelphia St.

EAST WHITTIER
15733 E. Whittier Blvd.

REDONDO BEACH
205 S. Pacific Ave.

MANHATTAN BEACH
1130 Manhattan Ave.

SO. BAY-CENTER (Redondo)
1959 Kingsdale Ave.

HAWTHORNE
145 N. Hawthorne Blvd.

GARDEN GROVE
12801 Harbor Blvd.

LA PUENTE
925 N. Glendora Ave.

MONTROSE
2314 Honolulu Ave.

NORWALK
11618 E. Rosecrans

PALMDALE
38500 N. Ninth St. East

AZUSA
In Foothill Center

TEMPLE CITY
9627 Las Tunas Drive

OFFICE HOURS: MONDAY-THURSDAY, 9 a.m. to 4 p.m., FRIDAY, 9 a.m. to 6 p.m.