

7 DAYS... THURSDAY thru WEDNESDAY

ING CELEBRATION 2nd BIG WEEK

- BONDED AND U.S.D.A. CHOICE** lb. 49c
- ick Roast**.....lb. 49c
- iss Steak**.....lb. 59c
- BONDED AND U.S.D.A. CHOICE** lb. 79c
- Spencer Steaks**.....lb. \$1.49
- und Beef**.....lb. 39c
- nd Chuck**.....lb. 49c
- Stew Meat**.....lb. 69c
- f Short Ribs**.....lb. 39c
- ns LANCASTER FARMS "KING"** lb. 49c
- k Sliced Bacon**.....lb. 69c
- Steaks**.....lb. 59c

GROCERY SPECIALS!

- l Peas**.....303 CAN 8 for \$1
- l Corn**.....303 CAN 7 for \$1
- Beans**.....SPRINGFIELD 303 CAN 8 for \$1
- l Tomatoes**.....303 CAN 8 for \$1
- l Catsup**.....12 OZ. BOTTLE 8 for \$1
- aches**.....GLORIETTA 303 CAN 5 for \$1
- pricots**.....WHOLE PEELED 303 CAN 5 for \$1
- omato Juice**.....46 OZ. CAN 4 for \$1

LS EFFECTIVE 7 DAYS!

- Chicken Pies**.....TURKEY & BEEF 8 OZ. PKG. 5 for \$1
- Dog Food**.....16 OZ. CAN 10c
- the Sea**.....CHUNK TUNA 6 1/2 OZ. CAN 29c
- ich**.....1/2 GAL. BOTTLE 33c
- hrimp**.....FOUR FISHERMAN 16 OZ. PKG. 85c
- kms**.....80 COUNT CELLO WRAPPED PKGS. 2 for 21c
- Milk**.....EVAPORATED TALL CAN 7 for \$1
- ice Bars**.....MINUTE MAID 6 COUNT 35c

ATION SALE SPECIALS!

- ckers**.....POUND BOX 33c
- ookies**.....BUTTER FLAVORED 8 OZ. PKG. 25c
- ookies**.....PEANUT CREAM PATTIES 6 3/4 OZ. PKG. 27c
- l**.....24 OZ. 45c
- hip**.....QUART 59c
- cial Tissue**.....400 CT. BOX 4 for \$1
- by Food**.....STRAINED 4 1/2 OZ. CAN 12 for \$1
- PPERIDGE FARMS, FROZEN, 11 OZ. PKG.** 59c

White King 'D' GIANT BOX 47c

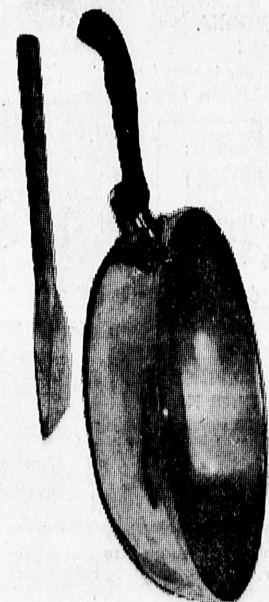
Orange Juice TREESWEET FROZEN 6 OZ. CAN \$1

Apple Sauce ROYAL PRIDE 303 CAN 10c

Dutch Pride 1/2 GALLON IMITATION ICE MILK 27c

Velveeta 2-LB. LOAF CHEESE FOOD 77c

Detergent LUCKY LIQUID 12 OZ. CAN 2 35c



"Neva Stick" Fry Pan

Revolutionary fat free cooking! FRY PAN with a rock hard glass finish bonded to sturdy heavy aluminum - plus wooden spatula

SELLING ELSEWHERE TO \$5.00

\$2.88

Plastic Sale!

Values to \$1.29... Your choice of 14 Qt. Waste Basket - Laundry Basket - Vegetable Bin - 14" Dish Pan - Colors, Pink, Yellow, Turquoise, Sand

66c

MORENO MEXICAN FOODS!

- Moreno Mexican Dinner**.....16 OZ. PKG. 45c
- Moreno Beef Enchilada**.....12 OZ. PKG. 45c
- Moreno Beef Taco**.....3 1/2 OZ. PKG. 45c

- Campbell's Soups**.....VEGETABLE BASE 19 1/2 OZ. CAN 2 for 27c
- Gold Medal Flour**.....5 LB. BAG 59c

- Jello Gelatine Dessert**.....3 OZ. PKG. 3 for 29c
- Tree Tea**.....4 OZ. PKG. 43c

PRICES EFFECTIVE SEVEN FULL DAYS... THURSDAY THRU WEDNESDAY... SEPT. 21 THRU SEPT. 27.

Lucky and Hiram's STORES HOME CENTERS

200 Women Pilots Expected Here For Fall Meeting Next Weekend

The City of Torrance in cooperation with the Long Beach Chapter of the Ninety-Nines will again play host to an anticipated 200 women pilots from the Southwest states as they participate in their annual Fall Sectional meeting next Friday, Saturday, and Sunday. Headquartered at the Jump 'n Jack, the international organization of licensed women pilots will begin the three-day activities with a cocktail party and dinner at the Palos Verdes Country Club. A business luncheon meeting will be conducted Saturday afternoon with the climax of the weekend events a reception and banquet which will feature as guest speaker, Dr. Robert Donaldson, flight surgeon of North American Aviation.

Facilities of the Torrance Municipal Airport will be extended to the pilots through the cooperation of Jack Egan, airport manager, and E. G. "Slim" Kidwell.

IN CHARGE of arrangements for the weekend activities is Mrs. Ellis O. Wagner of Palos Verdes Estates who has been assisted by Mrs. Edward Jackett of Torrance. Other members of the committee include Mrs. John Nitzgen and Mrs. Richard Weaver of Palos Verdes Estates; Mrs. Mildred Krueger, Mrs. Mark A. Choleuski, Mrs. Robert A. Meyers, Mrs. Donald Dougherty, Mrs. Arthur A. Tuttle, Mrs. Robert Ross, and Mrs. Pinkney of Torrance; and Mrs. Ruth Gay of Long Beach.

Cooperation of the Torrance Chamber of Commerce has again been extended to assure a hospital welcome for the returning Ninety-Nines. Assisting with the hospitality will be aviation-minded members of the local Civil Air Patrol and Wing Scouts units.



BEST BUYS FOR THE WEEK

In Torrance Markets

VEGETABLES — ARTICHOKES... starting. Heading for increases in Oct., Nov., Dec. SNAP BEANS. Moderate supplies. BROCCOLI supplies picking up. Much more in Oct. BRUSSELS SPROUTS' season. In plentiful through Jan. CAULIFLOWER. Light shipment now, but winter crop starts in Oct. CELERY heading for a peak of harvest in Nov. CORN beyond heavy abundance, but ample supplies to fill demand. CUCUMBERS. Volume holding fairly steady. PEAS. A few are coming in. PEPPERS. Fine quality Bell Peppers moving to market. POTATOES. Both Long Whites and Russets coming from California fields. TOMATOES from fine producing areas.

FRUIT — APPLES. A long list of favorite varieties in market. AVOCADOS. Summer varieties holding up well. FIGS... season about over. GRAPES. Now is the time for some of our finest. MELONS. Plentiful. NECTARINES. Getting late for these. Work fast. PEACHES. Season drawing to close. PEARS. Top quality Bartlett's here now.

PLUMS. A few still here. POMEGRANATES and QUINCE.

PROTEIN FOODS — POULTRY continues to lead the list of budget buys. TURKEYS and CHICKENS... fine quality. BEEF and LAMB to be "specialized" quite generally in southland markets. PORK supplies expected to pick up in a few more weeks. EGGS... budget stretchers.

WHAT PRECAUTIONS SHOULD AMERICANS TAKE...

for survival in the event of a nuclear attack? Well, the United States Department of Agriculture urges families to store and maintain a special stock of food and water. Always keep a 2-weeks' supply on hand. Emergency foods should be selected that will last for months without refrigerating, and that take little or no cooking. You can get all the facts in "Family Food Stockpile for Survival" (HG-77). It tells how to store and how often to replace food stockpiles. It lists equipment needed for emergency cooking. Sample menus show how to provide a reasonably balanced diet. FREE copies available from Office of Information, U. S. Department of Agriculture, Washington 25, D. C.

Harbor College Forum Series Topics Listed

Speakers and topics for Harbor College's fourth annual Forum series were announced yesterday by Leo N. Sirakides, chairman of the Harbor College Forum Committee. The series this year will feature an explorer, classic films, and a lecture by a Harbor faculty member, concluding with the appearance of Margaret Mead, world-famous anthropologist. All programs will be in the main gym on the Wilmington campus at 1111 Figueroa Place.

on the final program Tuesday, April 10. Season tickets are available to the general public at a cost of \$2 for the series. Admission price for single programs is 50 cents, except for the Margaret Mead lecture which is \$1. A season ticket for the entire series may be purchased through the mail from College Forum, 1111 Figueroa Place, Wilmington. Tickets may also be purchased at the college finance office, or at the box office Sept. 28.

Lomita Street Name Changed

Supervisor Burton W. Chace today announced a street name change in the Lomita area. Artisan Ave., between 240th St. and a line approximately 95 feet southerly of 247th St., will henceforth be known as Walnut St., Chace said. The change was approved today by the Board of Supervisors upon the recommendation of the Regional Planning Commission.

"The good old days were when the moon was just something the cow jumped over," — E. M. Remsburg, Vista (Calif.) Press.

WEST TORRANCE
Sepulveda Blvd. at Hawthorne

LOMITA
Western at Lomita

LENNOX
Prairie & Lennox

INGLEWOOD
La Brea & Hardy

WE GIVE BLUE CHIP STAMPS