



DR. WHARTON  
MEMBER CALIFORNIA  
SOCIETY OF  
DENTAL SURGEONS

## DENTURES

- IMMEDIATE DENTURES
- NEW MAGNETIC DENTURES
- REPAIRS... RELINES While U Wait

- PENSIONERS WELCOMED NOW YOU MAY HAVE DENTURES—NEW MEDICAL BILL
- DIFFICULT CASES NO EXTRA CHARGE

EXTRACTIONS WITH SLEEP  
SAME LOW PRICES  
(We Arrange)

OPEN EVENINGS AND SATURDAYS

NO MONEY Down  
18 Months To Pay

DR. WHARTON  
NO OTHER DENTIST IN OFFICE

1308 Sartori

In Downtown Torrance  
Above McMahan's Furniture

FA 00707  
FOR PRICES IN ADVANCE

## 'Truth for Today' Lecture Series To Open Here on Sunday Evening

Saturday night, Sept. 16, at 7:45 p.m., will mark the opening of the "Truth for Today" Bible Lecture Series that is being conducted by the Hardy-Roy Evangelistic Team.

Gerry Hardy, the speaker for the series, has lived in England during the major part of his life. The fact that he went through the terrifying months of the Battle of Britain enables him to look at life both from the standpoint of peace and of war and to analyze the effect it can have on a person.

Hardy's opening lecture is entitled "Facing the Future With Confidence." It deals with the solution to the frustration that is seen in the social, political, physical, economical, scientific and religious worlds in which we live.

HARDY STATES that the platform for each lecture is the

Holy Book, the Bible. These meetings will be held in the big Bible tent, which is located on the corner of Sepulveda and Hawthorne Bldvs., just across the street from Del Amo Shopping Center. The event will continue each Sunday, Tuesday, Wednesday, Friday and Saturday nights.

Ernie Roy, the music director, is comparatively new in this area, having originally from New England. He has spent six years in Canada and three years in Ohio, where he was the soloist for the "Rays of Light" radio program.

Ernie will be the soloist for the Crusade and will present many favorite gospel songs.

a supervised nursery for children through eight years of age. It is furnished with baby beds, play pens, play tables, and a piano. Plans are to have selected movies each night for the children.

Carefully supervised programs for the younger children during the meeting each night will permit parents to relax and enjoy the adult programs.

FOLLOWING IS a list of subjects for the coming week:

Sunday night, Sept. 17, answers the great question for which many people are unable to find satisfactory answers, "What Is the Cause of All Suffering?"

Tuesday night, Sept. 19, "The Race for Space."

Wednesday night, Sept. 20, "From Slavery to Freedom." Mr. Hardy plans to tell of his recent visit to San Quentin's

gas chamber.

Friday night, Sept. 23, "The Bridge That Will Never Cave In."

Saturday night, Sept. 23, Mr. Hardy presents a vital topic in lieu of the present world situation. It is entitled, "The Destiny of Russia, Europe and the World."

MR. HARDY stated that it is surprising how many people do not realize that Russia and many other European countries are mentioned in the Bible. This has for the past several years been one of the most popular lectures and a good turnout is expected for this lecture.

It was also pointed out by Mr. Hardy that the public is invited to attend each of his lectures—the admission is free and there is nothing to buy. One of the features of the series is that those who attend these lectures regularly will be able to receive many beautiful books and pictures, as well as a beautiful Bible.

Those desiring information or transportation to these meetings may call Crusade headquarters at FR 8-8038.

## My Neighbors



"If you're here about a broken window—my parents are away on a year's vacation."

# UCH MAKES SHOPPERS DIFFERENT

CONVENIENCE. our FRIENDLY COURTESY is sincere. we're proud to be different... to always think of YOU first



NEW DISCOUNT MILK PRICES!

1¢ ON EACH GALLON WHEN YOU BUY... OR MORE QUARTS 2 OR MORE 1/2 GALS.

SHOPPERS MARKETS

WESTON COOKIES  
• MINT FROSTIES • BANANA CREMES  
• TOPPERS • FR. VANILLA SUGAR WAFERS

Your Choice 4 Pkgs. \$1

BUTTER-NUT • ALL GRINDS

COFFEE . . . . .

1-lb. Can 59¢

MRS. BUTTERWORTH'S

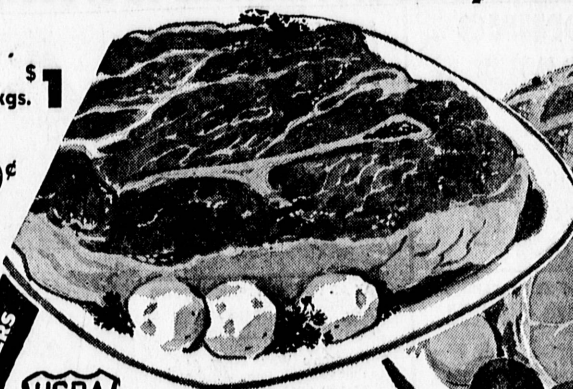
SYRUP . . . . .

12-oz. Btl. 39¢

PILLSBURY

Pancake Mix

2-lb. Box 35¢



## POT ROAST

- USDA "CHOICE" BEEF CUT AND TRIMMED THE SHOPPERS WAY

L 45¢  
B

CENTER CUT HAM SLICES  
Lb. 98¢

FARMER JOHN • FULLY COOKED

## HAMS

- FULLY COOKED AND READY TO SLICE AND EAT
- SHANK PORTION

L 39¢  
B

MADE FRESH EVERY HOUR • LEAN

GROUND BEEF . . . 3 lbs. \$1.49

LEAN • MEATY • MEDIUM

SPARE RIBS . . . 49¢ lb.

SHOPPERS HOMEMADE • LEAN

PORK SAUSAGE

3 1-lb. Rolls 99¢

1-LB. ROLL 39¢

• FRESH-FROZEN

• OVEN-READY

• BROAD BREASTED

TURKEYS

YOUNG TOMS

14-22 Lbs. 35¢ lb.

TENDER HENS . . .

8-12 Lbs. 39¢

JR. BELTSVILLES . . .

4-8 Lbs. 39¢ lb.

## BEST of the FRYERS

ALL BREASTS • LEGS • WINGS and THIGHS  
NO backs • NO necks • NO giblets

Lb. 49¢

4-LEGGED FRYERS

• MORE LEGS PER POUND

L 49¢  
B

GRADE "A" • FRY or BAR-B-QUE

ROASTING CHICKENS

39¢ lb.

GENUINE & OVEN READY LONG ISLAND

DUCKLINGS . . 49¢ lb.

USDA "CHOICE" BEEF  
CHUCK STEAKS

L 59¢  
B

USDA "CHOICE" • ARM

SWISS STEAKS

L 69¢  
B



## PRIME RIB ROAST

- THE KING OF ROASTS CUT FROM
- USDA "CHOICE" BEEF

L 89¢  
B

USDA "CHOICE" BEEF

## ROAST

- ROUND STEAK
- BONELESS
- ROLLED

L 89¢  
B



USDA "CHOICE" • BONELESS • ROLLED

SHOULDER CLOD . . . 79¢ lb.

USDA "CHOICE" • TENDER

CLUB STEAKS . . . 98¢ lb.

## DELICATESSEN

LEO'S SLICED

Beef • Spicy Beef • Ham • Dark Turkey

Your Choice 3 Pkgs. \$1

OREGON • AGED • TILLAMOOK • SHARP

CHEDDAR CHEESE . . . Lb. 69¢

BIG EYE • SLICED

SWISS CHEESE . . .

12-oz. Pkg. 49¢

IVORY LIQUID 12-OZ. BOT. 31¢	DREFT LGE. BOX 35¢	LIQUID JOY 12-OZ. BOT. 35¢	OXYDOL LGE. BOX 35¢	TIDE LGE. BOX 33¢	CHEER LGE. BOX 33¢	DASH FOR AUTOMATIC WASHERS 3-LB. BOX 77¢	CASCADE FOR AUTOMATIC DISHWASHERS 20-OZ. 45¢	SPIC & SPAN 1-LB. BOX 31¢	COMET CLEANSER REG. 2 for 33¢	MR. CLEAN 28-OZ. BTL. 73¢	FOODCRAFT • FRESH KOSHER STYLE CUCUMBER DILL PICKLES 25-OZ. JAR 39¢	SUNSHINE • COOKIES HYDROX CREMES 16-OZ. Cello Pack 49¢
------------------------------------	--------------------------	----------------------------------	---------------------------	-------------------------	--------------------------	--	--	---------------------------------	-------------------------------------	---------------------------------	---	--