

Citizens Bank Installs New IBM Computer

ST. ANDREW'S
PRESBYTERIAN CHURCH
Pacific Coast Hwy. at Ave. D
REDONDO BEACH

SUNDAY
WORSHIP SERVICES
9:00 and 10:30

NURSERY and CHURCH
SCHOOL for Both Services

Citizens National Bank this week announced installation of a centralized IBM banking system capable of handling almost all bookkeeping and accounting functions previously performed in its 63 branch offices.

Nicknamed MIDAS, the new system includes a transistorized IBM 1401 computer with magnetic tape storage and two automatic check handling units—1412 reader-sorters. Citizens Bank is the first in the Western United States to put this

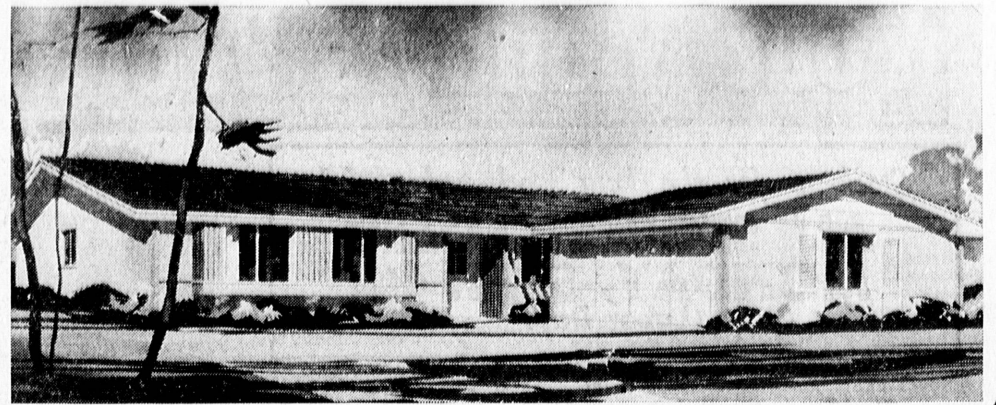
type of IBM equipment into operation.

More than 50,000 checking accounts are now being processed by the IBM 1401-1412 system and complete conversion is anticipated by next summer.

MIDAS, WHICH stands for Magnetic Ink Deposit Accounting System, can post activity on some 60,000 accounts in just one hour. With complete conversion to the system next

year, MIDAS will be capable of computing and writing on magnetic tape a new balance for all 160,000 commercial accounts each day. In addition, the system will handle a variety of other functions such as corporate trust accounting, real estate and installment loan accounting and payroll.

The bank will continue to prepare detailed statements for each account showing every check drawn and deposit made. These statements are printed out at a rate of 600 lines per minute.



POPULAR PENINSULA HOMES . . . Shown is one of the attractive stylings at Grandview Rolling Hills new development of spacious Palos Verdes homes priced from \$24,000.

Homes include carpeting, handsome fireplaces, built-in kitchen appliances.

Grandview Homes Report Brisk Sales in New Unit

Three new floor plans are proving popular at Grandview Rolling Hills, one of three new home communities being built by the Grandview Building Co. on the Palos Verdes peninsula. The first unit is two-thirds sold after four weeks, reports sales director William C. Kulow. The development, priced from \$24,000, features large luxury homes and down payments as low as \$136.

The Capri, a three-bedroom home available in a choice of three exteriors, is designed by architects Harris & Rice, AIA. It provides 1432 square feet of inside space and includes utility room, large living room, a kitchen nook and separate dining room.

ANOTHER three-bedroom model, the Catalina, has 1682 square feet of living area and features a large rear living room. A family room adjoins the living room. The bedroom wing is highlighted by a 12 foot-6 inch by 14 foot master bedroom.

THE CRESCENDO, a four-bedroom plan, contains 1816 square feet and is available in several exterior stylings. It features a big rear living room, a family room adjacent to the kitchen, and a dining bar.

All Grandview Rolling Hills homes have two baths, wall-to-wall carpeting, attached double garages, brick fireplaces, built-in gas ranges and ovens, and landscaping in front and side yards. Built-in dishwashers are standard in the Crescendo and Catalina models and optional in the Capri.

ALSO reported selling rapidly are homes in the Country Club Unit of Grandview Palos Verdes, located on view terrain adjacent to the Palos Verdes Country Club, and priced from \$29,535.

Sales office and model homes may be visited by driving Crenshaw Blvd. to Silver Spur Rd., and turning right.

The third community, West Palos Verdes Estates, overlooks the ocean at Hawthorne Blvd. and Palos Verdes Dr. West, and is priced from \$34,900.

Luxury homes in these two older developments contain up to 2127 square feet of inside space. Trades are considered.

Christian Elementary School

FIRST LUTHERAN CHURCH

Corner of Carson and Flower, Torrance

KINDERGARTEN THROUGH 7th GRADE

BUS SERVICE AVAILABLE

Dedicated to Spiritual and Academic Growth

Call FA 0-1953 or FA 8-5884

Torrance Church Calendar

SOUTH BAY BAPTIST CHURCH

4555 Sharynne Lane
Seaside Ranchos, Torrance
Pastor, Dr. C. Brundell
Frontier 5-3423
Sunday School . . . 9:30 A.M.
Morning Worship . . . 10:45 A.M.
— Junior Church
Baptist Training Fellowship . . . 6:00 P.M.
Evening Worship . . . 7:00 P.M.
WEDNESDAY
Bible study and prayer 7:30 P.M.
THURSDAY
Choir rehearsal . . . 7:30 P.M.
Modern Club nursery and toddler care provided all stated church services.
Sunday School bus transportation scheduled Frontier 5-3433.

FOURSQUARE GOSPEL CHURCH

Corner Arlington and Sepulveda
Tel. DA 6-2072
Rev. and Mrs. Jas. P. Lowen
SUNDAY . . . 9:30 A.M.
a.m. Morning Worship 10:45 a.m.
a.m. Bible Study 7:30 p.m.
a.m. Cadets, Defenders
Evangelistic 7:30 p.m.
MIDWINTER Wednesday — Bible Study at 7:30 p.m.
PUBLIC INVITED

HOPE CHURCH EVANGELICAL UNITED BRETHREN

8347 W. 174th St.
Rev. Monrad Bergeson
PH. DA 8-3277—Res. DA 9-3542
9:30 a.m.—Sunday School
11:00 a.m.—Morning Worship
6:30 p.m.—Evening Fellowship
Bible Study and Prayer Meeting
Wednesday, 7:30
Nursery services for the morning services
DA 3-1012

FIRST BAPTIST CHURCH

at Carson & Manuel St.
Torrance, Calif.
Phone FA 8-5030
Morning Service—9:30 a.m.
Robert Dehn, Asst. Pastor
SUNDAY—2 Morning Services
9:15 A.M. and 10:45 A.M.
Sunday School 9:15 for Nursery thru Juniors College and Adults
10:45—Jr. High and High School Fellowship Training—6:15 P.M.
Wednesday—Bible Study 7:30 P.M.
Communion Service and Prayer
Nursery provided for all services.
Also sound proof mothers' room.
ALL WELCOME

CALVARY COMMUNITY CHURCH OF TORRANCE

1117 Milton St. at Raymond Ave.
Torrance
Donald E. Plantier, Pastor
Phone FA 4-5231
Sunday School—9:30 a.m.
Bible classes for all ages
Morning Service—11:00 a.m.
(Nursery service provided)
Youth Program—5 and 6 p.m.
Evening Service—6:30 p.m.
Wednesday Night Bible Study and Prayer—7:30 p.m.
Women's Missionary Society every 2nd and 4th Thursday of month

GREYRIARS MEMORIAL PRESBYTERIAN (Orthodox)

2311 South Figueroa, Torrance
Worship hours 11 a.m. and 7 p.m. Every Sunday
Sunday School at 9:45
Morning Service—10:30 a.m.
Evening Service—6:30 p.m.
Dr. David G. Anderson—Pastor
Rev. William H. Schaefer—Minister
Rev. William H. Schaefer—Director of Choir

ST. ANDREW'S EPISCOPAL CHURCH

1432 Emeralda, FA 8-3781
Rev. Hugh R. Percy, Rector
7:30 a.m. Holy Communion
9:15 a.m. Family Worship Service followed by Church School and Coffee Hour
11:00 a.m. Morning Worship (Choir Ensembles on 1st and 3rd Sundays)
(Child care and Nursery provided at 9:15 and 11 a.m. services)
Weekdays: Holy Communion at 11 a.m. Thursdays and 6:30 a.m. on All Saint's Days

CHRIST THE KING LUTHERAN CHURCH

2706 W. 182nd St., Torrance
Pastor, Rev. W. Midtun, Pastor.
Phone DA 3-8821
Rev. David S. 5-3455
Divine Worship, 8:30 A.M.
Sunday School, 9:45 A.M.
Divine Worship, 11:00 A.M.
Nursery care provided at both services.

ASSEMBLY OF GOD CHURCH

24404 Hawthorne Blvd.
Walteria
Rev. O. W. Fish, Pastor
Frontier 5-7788
Sunday School—9:45 a.m.
Morning Worship—11:00 a.m.
Children's Church—11:00 a.m.
Evangelistic Service—7:30 p.m.
Tues. Prayer Meeting—7:30 p.m.
Thurs. Young Peoples—7:30 p.m.

SEVENTH-DAY ADVENTIST CHURCH

Corner of Arcadia and Sonoma
Elder Glen L. Goffar, Pastor
Residence — FR 8-7331
Church Office — FA 8-1540
Saturday
Sabbath School—9:30 A.M.
Church Service—11 A.M.
Wednesday
Prayer Meeting—7:30 P.M.
Youth Meeting—7:30 P.M.

ROLLING HILLS COVENANT CHURCH

2221 Palos Verdes Dr. No.
Allen W. Wickman, Pastor
Sunday School 9:45 a.m. Classes for all ages and interest groups.
Morning Worship 11:00 a.m.
Evening Service at 7:00 p.m.
Youth groups for Junior and Senior High School Youth at 6:00 p.m. Nursery and Children's church services each Sunday.
Hittchcock

LUTHERAN CHURCH OF THE GOOD SHEPHERD

21100 Victor St., Torrance
Phone: FR 1-6710 or FR 3-0631
SUNDAY
9:30 a.m.—Sunday School
10:45 a.m.—Morning Worship
Child care during the service
Holy Communion last Sunday each month.

SOUTH BAY CHURCH OF GOD

17681 Yukon, Torrance
Phone DA 3-3471 or FA 3-2674
Pastor: Rev. Clifford L. Tierney
Associate Pastor: Rev. Clifford L. Tierney
9:30 a.m.—Sunday School
11:00 a.m.—Church
7:00 p.m.—Church
Nursery Care Provided

JEHOVAH'S WITNESSES

Torrance Congregation
2002 Redondo Ave., Torrance
Public Lecture 8 P.M.
SUNDAY
9:30 A.M. Sunday
10:45 A.M. Sunday
BIBLE STUDY 8 P.M. Tuesday
Bible Study 8 P.M. Tuesday
SERVING MEETING 8:30 P.M. Thursday
Goodwill persons invited . . . Free No Collection
Consecration Service
LEONARD E. OLIFF
Telephone Terminal 8-5624

ST. JAMES CATHOLIC CHURCH

417 Vincent St., Redondo
Sundays Masses, 8, 7, & 10:15
11:15 and 12:15 o'clock
High Mass, 9 A.M.

CHURCH OF CHRIST

3520 Emerald Ave., Torrance
Preston L. Winchell, Minister
SUNDAY
9:45 a.m.—Bible Study
10:45 a.m.—Worship Service
6:00 p.m.—Young People's Meeting
7:00 p.m.—Evening Worship
WEDNESDAY
10:00 a.m.—Bible Bible Class
7:30 p.m.—Bible Study
Phone FA 0-1535

FIRST CHURCH OF CHRIST, SCIENTIST

218th St. and Manuel Ave.
Torrance, Calif.
Church Services—11 a.m.
Wednesday Eve Meetings—8 p.m.
Sunday School—
9:15 a.m. children 9 yrs to 20
11 a.m. children under 9 years
must be accompanied by parent or guardian for enrollment
Reading Room—1406 Cravena
Open 10 a.m. to 5 p.m. daily except Sunday
Sunday School—10:45 a.m. Also 7 to 8 Monday and Friday evenings
All are welcome to attend our services and to use our Reading Room.

CENTRAL CHURCH EVANGELICAL UNITED BRETHREN

Marcelina & Arlington
Rev. Walter M. Stanton
FA 8-5010
9:30 — Sunday School
11:00 — Morning Worship
6:30 — Youth Fellowship
8:30 — Evening Worship
Midweek Worship Service 7:00 Wednesday Evening

FIRST CHRISTIAN CHURCH OF TORRANCE

(Disciples of Christ)
2620 El Dorado, Torrance
Rev. H. Milton Sipe, Pastor
Res. Phone FA 8-4583
Two Sessions of Church School and Morning Worship, 9:30 and 11:00 a.m.
Nursery provided at both sessions.
Christian Youth Fellowship—7 p.m.

FIRST LUTHERAN CHURCH

Carson and Flower
Phone FA 8-5884
William J. Rolander, Pastor
John Wilker, Intern
8:00 a.m.—Worship Service
9:30 a.m.—Sunday School
Children and Adults
10:45 a.m.—Morning Service
(Nursery at 10:45 Service)
Holy Communion—First Sunday
Luther League—2nd and 4th Sundays.

DEL AMO SOUTHERN BAPTIST CHURCH

317 S. Broadway, Redondo Beach
FR 1-3925
Sunday School—9:45 A.M.
Tentative Union—6 P.M.
Worship Services
11 A.M. and 7 P.M.
Pastor, Daniel B. Weaver Jr.

FIRST CHURCH OF THE NAZARENE

1501 West Carson
Pastor W. Gilliland, Pastor
Ph. FA 8-4080
4:30 A.M. Sunday School
10:45 A.M. Sunday School
Nursery
Children's Church
6:00 P.M. Youth Fellowship
7:00 P.M. Evening Service
7:30 P.M. Testament Hour of the Week
7:30 P.M. Wednesday evening
"Come Ye Apart Hour"

REDONDO-TORRANCE CHURCH OF RELIGIOUS SCIENCE

907 Knob Hill, Redondo Beach
Sunday Services—11 A.M.
Children's Church—10:30 A.M.
(All Ages)
Senior Youth—7 to 9 P.M.
Dr. Earl D. Barnum, Minister
Church Phone FR 8-5455

UC Extension Classes Held At Mira Costa

Instruction in audio-visual methods of education, designed to acquaint teachers with all types of instruction media in the field, will be offered this fall in nine Southern California communities through UCLA Extension.

All courses, including three sections at the University Extension Center at 813 S. Hill St. in Los Angeles (MA 3-6123) and in South Bay, Norwalk, Downey, Bellflower, Orange County, San Gabriel Valley and at UCLA, start during the week of Sept. 18.

For Torrance and South Bay residents Wednesday classes begin Sept. 20 from 7 to 9:30 p.m. in Room 60 of Mira Costa High School, 701 South Peck Ave. in Manhattan Beach. Charles J. Lang is the instructor.

Bulletins listing complete information on the audio-visual study as well as some 100 other accredited classes designed for teachers, are available at the UCLA offices of University Extension or the Hill St. Center.

QUICK ACTION CLASSIFIED
CALL FA. 8-4000

YOU CAN
THINK
about GOD
EVERYWHERE

you can best
WORSHIP WITH OTHERS
AT CHURCH

BEGIN YOUR WEEK AT WORSHIP

SUNDAY SERVICE

9:15 A.M.—First Worship Service and Sunday School for Nursery through Junior High School

10:45 A.M.—Duplicate Worship Service and Sunday School for Jr. High School through Adults

6:15 P.M.—Pastor's Class

6:30 P.M.—Fellowship Groups for all ages

7:30 P.M.—Evangelistic Hour—Youth Choir—Chorus—Testimony Time

Pastor Preaching all Services
Nursery open for your convenience

First BAPTIST CHURCH
2118 CARSON STREET
Morgan Gates, Pastor

OPEN LABOR DAY UNTIL 5:30 P.M.

LABOR DAY SPECIALS!

GIGANTIC SUMMER CLOSE-OUT!

Save Up To 40%

9'x9' UMBRELLA TENT
WITH SEWN-IN FLOOR, POLES AND PINS. Rear window with storm flap. Water resistant canvas. Mosquito netting door. REG. 30.00 VALUE
1995

NEW 9'x12' SIDE ROOM TENTS
COMPLETE WITH POLES AND PINS. Has screen door, window with storm flap and SEWN IN FLOOR. REG. 50.00 VALUE
2995

NO ADD-ONS . . . These prices include everything

FREE! FREE!

CLIP THIS COUPON
and get a sturdy
HINGED WOODEN BOX
With Metal Hinge and Rope Handles

FREE . . . WITH ANY PURCHASE OF \$1.00 OR OVER

LIMITED OFFER—DON'T MISS IT!

4 Lbs. Warm Filling SLEEPING BAGS
Built-in ground cloth, Easy sliding side zipper, water repellent outer cover, 36"x72".
4.99

SPORTER SPECIAL SLEEPING BAGS
3 lbs. warm, lightweight filling. Large 36"x52" size. Flannel lining. 100 inch zipper. Waterproof groundcloth. 2 can slip together.
Made to sell for 16.50
8.99

Down & Feather G.I. MUMMY BAGS
A warm water repellent bag . . . favorite among hunters, campers, etc. Re-issue. Excellent condition.
9.99

GENUINE G.I. RUBBERIZED NYLON NEW AIR MATTRESS
4.99

100% Wool G.I. Re-issue BLANKETS
2.88

NEW 6-Pc. Scout Type ALUMINUM MESS KITS
ONLY
1.29

NEW U.S. MARINE JUNGLE HAMMOCKS
U.S. Marine type with zippered opening and waterproof roof. Can use on a c.e.f. ground for comfortable, safe sleeping. Also used for storing food and supplies.
6.99

NEW 18 Qt. CANVAS BUCKET
69c

NEW CANTEEN
38c (re-issue)
98c

NEW KAPOI FILLED LIFE VEST
Coast Guard Approved. New Gov't. Surplus CHILDREN'S SIZES
1.99

5-GAL. JEEP CANS
Genuine G.I. Surplus GAS 1.98 WATER 2.98
98c

BOAT CUSHIONS
Coast Guard Approved
1.99

NEW WINDBREAK
Auxiliary Fence • Screen Enclosure, etc. Heavy canvas and Nylon screen. Metal grommet top and bottom with rope loops.
2.99

Metal Frame RUCKSACK
Large inner and outer pockets, adjustable straps. G.I. re-issue.
5.99

G.I. Re-issue MOLDED PLYWOOD PACK BOARDS
With laced-on canvas. Perfect for air circulation. Adjustable shoulder straps.
1.99

GENUINE G.I. Re-issue METAL BUNK BEDS
Built-in resilient springs can be used separately or clasped for double bed. 36" wide, standard length.
4.99

BRAND NEW BRITISH MILITARY SHOES
With Steel Toe Plates and Heel. Plates Plus Rawhide Shoe Laces. **12.00 VALUE**
Sizes to fit from 7 1/2 through 10
3.99 PR.

GENUINE G.I. Re-issue PARATROOPER BOOTS
Ideal for field workers, hikers, fitter men, etc. Need slight repairs.
2.99 PR.

NEW! GENUINE G.I. NAVY HAMMOCKS
Heavy duty canvas with new ropes and clews.
4.99 COMPLETE

COLEMAN CAMP EQUIPMENT
SAVE 50% AND UP

End of Season Close out SPECIALS

COLEMAN PITCHER POUR
1 GAL. JUG 4.99 VALUE
REG. \$5.51
1.99

COLEMAN 2 Burner Stove
REG. \$15.95
DELUXE 2 BURNER STOVE REG. \$21.50
REG. \$24.95
14.95

COLEMAN SINGLE MANTLE LANTERN
REG. \$15.50
REG. \$19.95 List. #2204
9.99

SNOWLITE COOLER
REG. \$19.95 List. #2230
6.99

DELUXE COOLER
REG. \$19.95 List. #2518
11.95

Los Angeles 8505 S. WESTERN AVE.
Block North of Manchester
PL. 2-4133

Hawthorne 649 S. HAWTHORNE BLVD.
N.W. Corner 134th Street
OR. 8-8500

WESTERN SURPLUS STORES

OPEN DAILY TO 9:00 P.M. . . . SUNDAYS TO 5:30 P.M.