

Hawthorne Christian School

NOW REGISTERING FOR FALL TERM
ALL DAY CLASSES

From Kindergarten through 8th Grade

... EMPHASIS ON THE THREE R's
... CLASSES IN LANGUAGE AND SCIENCE
... READING TAUGHT BY PHONICS METHOD
Enroll Now—Low Registration Fee—Reasonable Tuition

BUS SERVICE FOR ALL STUDENTS

A private school of distinction
WITH A CHRISTIAN INFLUENCE

HAWTHORNE CHRISTIAN SCHOOL

930 S. Prairie Ave. (at 136th)

OS 9-2591



LEADERS MEET... Commerce and Industry leaders for the annual Community Chest campaign in the Harbor area get acquainted during C & I meeting in Lomita. From left are Elmer Wasson, San Pedro; Harold Frentz, Torrance; and Walter Holstein, Wilmington. Frentz is Harbor Area chairman.

Mentally Retarded Will Benefit From Fund Drive

The Southwest Assn. for Retarded Children, an organization composed of parents and friends of the mentally retarded, will begin their fall building fund campaign with a luau.

The luau will be held at Lennox Park, 10828 Condon Ave., Lennox, on Wednesday, Sept. 6, at 6:30 p.m. There will be no charge and anyone interested in the welfare of the mentally retarded is invited to attend. If interested in attending call FR 6-9966 or OR 4-8136 for further information as to what to bring. Child care will be provided.

The need for an activity center is great, for there is no such place in the southwest portion of Los Angeles county. The association's goal for the future is the establishment of an activity center for a training and educational program, which will give each child the maximum opportunity to develop to his full capacity.

They plan to provide classes for nursery-age children and their parents, pre-school children, training for those not meeting the criteria for admis-

sion to public school, work training and activities for those over-school age.

New Marine Recruiting Office Opens

Recruiting offices for the United States Marine Corps will be established at the Alondra Park swimming pool office on Redondo Beach Blvd. at Yukon Ave., beginning in September, it was announced this week.

The office will be opened from 9 a.m. to 5 p.m. as soon as the swimming season is over and will remain at this location until May, 1962.

Lt. Col. J. Antink, officer in charge of recruiting for the United States Marine Corps, is in charge of recruiting for the United States Marine Corps and the County of Los Angeles.

Stevens
DEPARTMENT STORE

PACIFIC COAST HIGHWAY
at CRENSHAW, TORRANCE
(Next to Shoppers Market) Opens 9 A.M. to 10 P.M. Daily

Chalk up Bigger Savings for BACK to SCHOOL



FOR A BEAUTIFUL LINE ...
A COMFORTABLE FIT ...
LOVABLE'S FAMOUS

"CIRCLE STITCH"

BRA

ONLY **\$1**

So much beauty and so much comfort ... for so little! The circle-stitched cups lined in the undersection assure really firm support. The anchor-band that can't roll or wrinkle assures comfortable fit. White cotton. Sizes 32 to 38.

You'll agree ...
It costs so little to look Lovable



maidenform

A. NEW

VARIATION GIRDLE

Here's a near-weightless wonder with a new flattening front panel that really controls your tummy! The waistband dips to a gentle V for added comfort, and it's perfectly seam free for a smooth, uncluttered fit. White; can even be machine washed. Small, medium, large in Girdle and Panty Girdle styles.

\$3.95

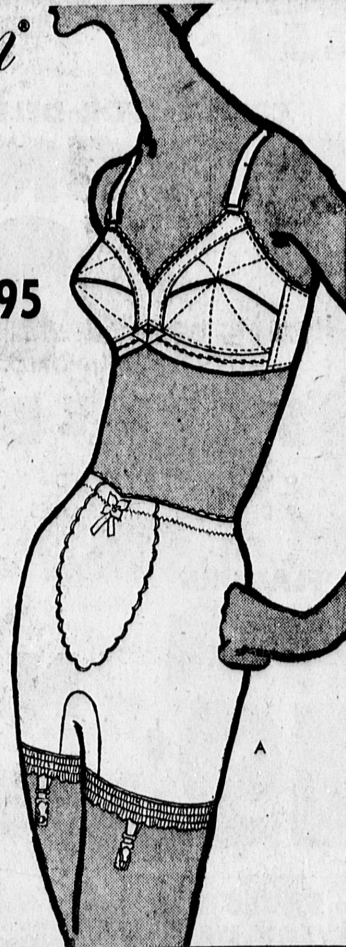
B. SO VERY NEW...THE

COUNTERPOINT BRA

\$2

Counterpoint has a unique butterfly-shaped center section that adjusts the size and fit of each cup. This exclusive Maidenform feature is made of Vyrene* (Spandex) elastic, guaranteed to stay new longer. Two Counterpoints to choose from—with broadcloth back or Spandex back. Both with spoke-stitched undercups for long-lasting, firm uplift. White. Sizes 32 to 38; A, B, C cups.

*All Cotton Broadcloth Acetate
Cotton, Vyrene (Spandex) Elastic



HANES

Trim Fit plus
Long Wear =
A Top Buy!

Hanes underwear keeps him well dressed from the skin out! And Hanes long-wearing quality makes these T-Shirts and Briefs an economy buy! Get him a week's supply now!

T-SHIRTS

Fully combed cotton with reinforced no-sag neck keeps its shape through wash after wash. White. Small, medium, large.

\$1

KNIT BRIEFS

Double panel with reinforced seams, cut for day-long support and perfect comfort. Heat-resistant elastic waistband. White cotton knit. Sizes 28 to 44.

\$1

HANES

AMERICA'S
FINEST ...
WASH and WEAR SHIRT



by Truval

You'd never believe a fine-quality dress shirt could be so easy to care for! Just wash ... hang to drip dry ... and wear! The perfect shirt for the school-bound, for travelers, for everyone who wants smart, easy-care comfort! Sizes 14 to 17.

\$3.99

Buster Brown

WASH 'N WEAR
COTTON KNITS
FOR LITTLE FOLKS

Children love color and comfort; smart moms like wash 'n wear. That's why Buster Brown cotton knits are everybody's favorite! Dark and light shades for boys and girls. See them all at Stevens.

INFANTS' SHORTS

COTTON KNIT
SIZES 1 to 4 **\$1**

OPEN SHOULDER **POLO SHIRT**

COTTON KNIT
SIZES 1 to 4 **\$1.19**

CHILDREN'S ANKLETS

Highly absorbent cotton knit; sizes 4 to 6 **PAIR 39¢**



LEVIS

DOUBLE KNEE JEANS

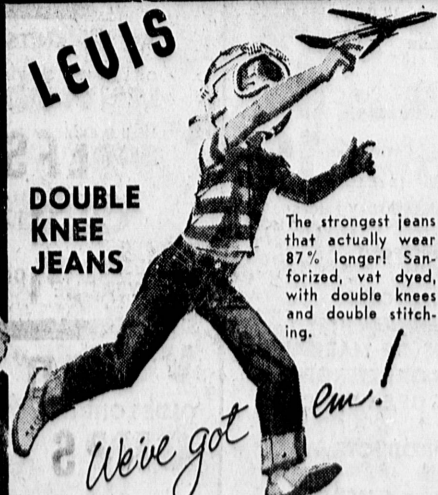
The strongest jeans that actually wear 87% longer! Sanforized, vat dyed, with double knees and double stitching.

We've got em!

REG. and SLIM, Sizes 6 to 12 **\$2.98**

REG. and SLIM, Sizes 14 to 16 **\$3.50**

HUSKIES, Waist Sizes 25 to 36 **\$3.50**



STILL
GREATER

SAVINGS! DISCOUNT PRICES & BLUE CHIP STAMPS