

## Calvary Baptist Church Planning New Sanctuary

Plans have been announced for an addition of a new sanctuary by the Calvary Baptist Church, 2818 Manhattan Beach Blvd., with construction expected to begin about July 25th.

Chairman Robert Buckler described the proposed sanctuary as a steeped red-brick structure which will have a seating capacity of 550 and will cover in excess of 10,000 sq. ft. He estimated the total cost would approach \$200,000.

Plans include a balcony, a sound control room, a mothers' room, a foyer with adjoining lavatories, custodial and ushers' rooms, a garden area visible through sliding glass panel doors, a pastor's study, baptismal rooms, a choir practice room, and a room for the forced air heater.

IN FINANCING the new facilities the Calvary Baptist Church is using the Broadway Plan which has been used extensively for church finance throughout the country. In the past 20 years, thousands of churches of many denominations in 37 states and Canada have financed their building programs through the Broadway Plan, according to Henry Thomason, chairman of the Calvary Baptist Central Com-

### Pastor, Lay Delegate To Report on Synod

"The Church Is One Foundation" will be the sermon topic on Sunday, June 19, at Seaside Community Church (United Church of Christ) 230th and Ocean Ave.

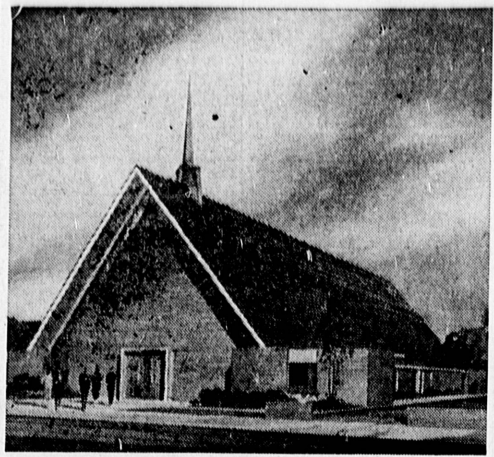
Lay delegate Richard Evans and Pastor William Schatz will present the congregation with the highlights of the spring meeting of the California Synod of the Evangelical and Reformed Church. Seaside has begun its summer schedule of services, Church school starting at 9:20 a.m. to 10:30 a.m. Morning worship will be 9:30 a.m. and 10:30 a.m.

mittee of the Broadway Plan. He stated that there has never been a default where the plan has been used.

He explained that the plan is a simple variation of municipal finance in which the church offers 6 per cent interest bearing bonds to its members and friends in \$50 to \$1000 denominations which mature in from one to fifteen years.

A GROUP of 19 pace setting church leaders have already reserved \$15,000 of the bonds, averaging \$790 apiece. Thomason enthusiastically pointed to this response as providing a great challenge to the rest of the church.

The organization for the bond drive is headed by Hank Thomason, general chairman; Heral Elwell, organizational chairman; Jack Kehler, finance chairman; Steve Robertson, publicity chairman, and Pastor H. Earl Kuester.



PROPOSED CHURCH . . . The rendering of the proposed sanctuary for the Calvary Baptist Church shows the simplicity of the red brick structure which is in the planning stage. A fund drive to finance the project has been launched, according to the Rev. H. Earl Kuester, pastor of the church, at 2818 Manhattan Beach Blvd.

## Vacation Church School to Open

The vacation church school at Wayside Chapel will open Monday under the direction of the Harbor City-Lomita Methodist Church, and will continue through July 1, offering instruction to children from 4 years of age through ninth graders.

The classes, meeting at the Chapel, which is located two blocks west of Western Ave. at 259th St., will be held from 9 to 11:30 a.m. each week day.

Theme of the program will be "Our Church," and a teaching staff of qualified Christian women, under the direction of Mrs. May Fair, will conduct the classes.

Stories, music, handicrafts, games, and refreshments will be on the daily agenda as the children study the impact of Christianity on the world.

## St. Luke's to Start Schedule for Summer

Summer schedules will be started Sunday at the St. Luke's Presbyterian Church, 26825 Rolling Hills Road, according to the Rev. Thomas M. Gibson, pastor.

Worship services will be held at the Dapplegray School at 9:30 a.m. Sunday's topic will be based on the Book of Dan-



Fathers of all ages will find these services especially inspiring.

You Are Cordially Invited

### SUNDAY SERVICE

- 9:15 A.M.—First Worship Service and Sunday School for Nursery through Junior
  - 10:45 A.M.—Duplicate Worship Service and Sunday School for Jr., High School through Adults.
  - 6:15 P.M.—Pastor's Class
  - 6:30 P.M.—Fellowship Groups for all ages.
  - 7:30 P.M.—Evangelistic Hour — Youth Choir — Chorus — Testimony Time.
- Pastor Preaching all Services Nursery open for your convenience



FOR CLASSIFIED

RESULTS

CALL FR 5-2974

## Dial a Prayer

non denominational

FAirfax 8-3903

Courtesy of—

HALVERSON-LEAVELL  
MORTUARY  
Torrance



## STONE & MYERS

Mortuary

1221 ENGRACIA AVE. PHONE 8-1212

MRS. BESSIE V. MYERS

Free Parking in Rear

GO CLASSIFIED

**ST. ANDREW'S PRESBYTERIAN CHURCH**  
Pacific Coast Hwy. at Ave. D  
**REDONDO BEACH**  
SUNDAY WORSHIP SERVICES  
9:00 and 10:30  
NURSERY and CHURCH SCHOOL for Both Services

**FRIENDSHIP BIBLE CHURCH**  
Y.W.C.A. BLVD.  
2320 W. Carson St.  
Torrance  
G. E. Ney, Pastor  
Phone DA. 4-2360  
—Special Music—  
Friendly, Fundamental, Independent  
Evening Service...7:30 p.m.  
Morning Worship, 9:30 a.m.  
Sunday School...8:45 a.m.

**ST. ANDREW'S EPISCOPAL** 1432 Engracia Ave., Torrance  
THE FRIENDLY DOWNTOWN CHURCH OF THE HARBOR AREA  
(Opposite Torrance Memorial Hospital)  
7:30 A.M. Holy Communion  
9:15 A.M. FAMILY SERVICE—Worship followed by CHURCH SCHOOL and COFFEE HOUR  
11:00 A.M. Morning Worship (Choral Eucharist on 1st and 3rd Sundays)  
(Nursery and Child Care provided at 9:15 and 11 A.M.)  
Weekdays: Holy Communion, Thursday at 6:30 A.M. and 11 A.M.  
REV. HUGH R. PERCY, B.A., B.D., Rector

**MILLICAN'S VARIETY & JUVENILE SHOP**  
2509 W. TORRANCE  
TORRANCE  
TORRANCE & CRENSHAW  
NEXT TO LUCKY MARKET

# QUIT

## A GENUINE SELLING OUT SALE!

**WE ARE SELLING OUT COMPLETELY!**

All Infants', Children's, Men's and Women's Wear . . . All Stationery, School Supplies, Notions, Drug Sundries, Hardware, Electric and Household Items. All Toys, Games, Models, Dolls, Gift Items, Greeting Cards . . . In fact, every item in the store is now price slashed for quick sell-out regardless of cost or loss!

**SALE STARTS THURSDAY, 10 A.M.**

Sale Will Continue Until the Entire Stock is Sold!

\$2.89 BIRDSEYE DIAPERS DOZ. **\$1.88** ALL "LOVABLE" BRAS **1/2 PRICE** TOILET PAPER **13¢** Northern Tissue **8¢**

**SAVE NOW** On All Infant's Needs . . . Crawlers, Sleepers, Coveralls, Pajamas, Slips, Petticoats, Capris, Skirts, Sweaters, Shorts, Jamaicas, Girls' Coats, Sport Shirts, Slacks, Boys' Jackets, Wrangler Blue Jeans, etc.

Values to 39¢ **BOY'S SOX 17¢** **INFANT AND GIRLS DRESSES 1/4 TO 1/2 OFF** 22¢ SCOTT PAPER TOWELS **10¢**  
25¢ Rubber Tipped **BOBBY PINS 12¢**

IT WILL PAY YOU to drive over for this sale, no matter where you live! COME EXPECTING SENSATIONAL SAVINGS in Childrens Wear and Household Items! You won't be disappointed!

60¢ Boys White **TEE SHIRTS 33¢** All Children's **HATS, CAPS, BONNETS 1/2 PRICE** \$1.00 Women's Full-Fashioned **FIRST QUALITY NYLON HOSE 47¢**  
30¢ Trifurc and Buster Brown **BOBBY SOX 25¢**

**KLEENEX 400 COUNT 19¢** **45¢ KOTEX . . . 27¢**

**ALL RUG AND WOOL YARN 1/2 PRICE** Values to 69¢ **YARDAGE One group 29¢** **ALL GREETING CARDS 1/2 PRICE**  
Values to \$1.29 Fine **YARDAGE 45¢**

89¢ "Playtex" **WATERPROOF PANTS 49¢** 19¢ MEN'S WHITE HANKS **8¢** **COSTUME JEWELRY 1/2 price**

10¢ Big Ten Pencil **TABLETS 5¢** **1/4 TO 1/2 OFF!** **ALL DECALS — 1/2 PRICE** 49¢ 100-ct., 3-hole **FILLER PAPER 25¢**  
\$1.49 BROOMS for **77¢** 25¢ Envelopes **12 1/2¢**

72¢ — 53¢ — 47¢ **SHERWIN WILLIAMS PAINT 25¢** **ALL TOYS 1/4 TO 1/2 OFF**  
\$1.25 to \$2.25 S.W. Paint **49¢**

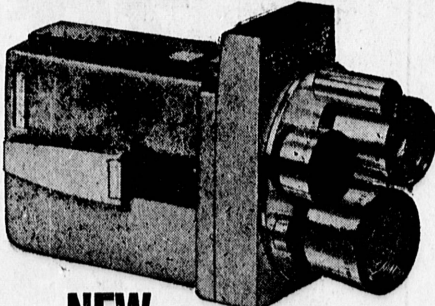
**THIS IS A STOREWIDE SALE**  
All Unadvertised Items Now **1/4 to 1/2 OFF!**  
All fixtures for sale, no reasonable offer refused.

**MILLICAN'S VARIETY & JUVENILE STORE**  
2509 W. TORRANCE—TORRANCE  
Torrance and Crenshaw—Next to Lucky Market  
Plenty of Free Parking Open Even. Till 8 P.M.  
Sunday 10 A.M. to 4 P.M.

This Sale is conducted by the Retail Merchants' Sales Service, 4029 Palm wood Dr., Los Angeles 8, assuring you genuine store-wide savings.



DAD DESERVES IT!



## NEW ELECTRIC EYE MOVIE CAMERA

New Argus Cinetronic makes movies as easy as snapshots . . . electric-eye lens adjusts itself while you shoot, so every frame is bright and color-perfect even when the light changes in mid-scene. Just aim, shoot, enjoy. Three lenses vary your movies with long shots, close-ups and regular action. Each lens has its own separate viewfinder . . . that automatically swings into position as you switch lenses. Inside, precision sprockets hold film in perfect register . . . take all the jiggle and shiver out of 8mm movies. \$10 down is all it takes to make your kids movie stars. Don't deny them that!

REG. \$149.95 NOW ONLY . . . **\$99.88**

**FATHERS' DAY SCOOP**  
35 mm EDIXA  
West Germany's Finest medium price SLIDE camera.  
FEATURES: 2.8 Lens Rapid Advance. Range Finder. Speeds from 1 second to 300.  
Complete with case. REG. \$59.95 NOW **\$26.88**

Let Dad get in the picture this year . . . Give him a new camera from our large selection of famous makes at money-saving prices!

- Clip Out Coupon **SAVE 50¢**
- 8mm or 35mm 20 Kodachrome film for processing, REG. \$1.75.
- \$1.25 with Coupon
- 1 to 2 day service
- Good 'til June 23, 1960

## GIFT IDEAS FOR DAD

. . . under \$20.00

- Mansfield EDITOR SPICER **\$17.88**
- 4-LITE BAR w/case, bulbs **9.98**
- MOVIE CASE **4.88**
- TRIPODS from **6.88**
- 50 ft. 8mm CARTOONS, from **1.75**
- 8 mm REEL CHESTS **3.29**
- Radiant 40 x 40 SCREEN **9.98**
- Polaroid WINK LITE **14.88**
- 6 TRANSISTOR RADIO (with case & earphone) **19.88**
- Kodak STARFLASH KIT **8.88**
- STEREO TAPES, from **2.48**
- 7 x 35 BINOCULARS **9.98**
- 8 mm SPICERS, from **1.98**
- Blank 1200 FT. TAPE **1.79**
- 35 VIEWERS, from **79¢**
- TURRET ATTACH. for mm Brownie **14.88**

ASK ABOUT E-Z TERMS—WE ACCEPT INTERNATIONAL CREDIT CHARGES

## Try-It Stores Camera Dept.

23033 So. Avalon TE. 4-8061 Wilmington  
OPEN DAILY 9:30 TO 8 • FRIDAYS TO 9 • SUNDAYS TO 6