

Chace Pledges 'Neutrality' In Dominguez Incorporation

An attitude of "complete neutrality" has been pledged by Los Angeles County Supervisor Burton W. Chace regarding the proposed incorporation of the new city of Dominguez. The incorporation move was initiated recently by a citizen's group fearing annexation of portions of the 26 square-mile area by surrounding municipalities. Boundaries of the proposed new city are to be approved by the County Boundary Commission today. The boundaries, generally, are the cities of Los Angeles

and Gardena on the West; the city of Compton on the north; the Los Angeles River and the City of Long Beach on the east; and Lomita Blvd. on the south.

NEXT STEP in the proceedings, according to Chace, is the circulation of the incorporation petitions. This must be completed within 90 days after approval of the boundaries. The petitions, in order to qualify, must be signed by 25 per cent of the property owners representing 25 per cent of

the assessed value of property in the proposed city. The clerk of the Board of Supervisors then has 30 days in which to determine if the petitions are sufficient. Within five or six weeks of the finding of sufficiency, the Board of Supervisors must conduct a hearing when property owners seeking exclusion from the city may present their cases.

"AT THIS POINT," Chace said, "it is incumbent upon the Board of Supervisors to hear all requests for exclusion and decide each case on its merits. The attitude of the Board in hearing these requests in no way indicates that it is favoring or opposing the actual

Program Aid Improvement To Park Use

Recent improvements in the facilities at Lomita County Park have sparked an increase in organized recreation activities there, according to Supervisor Burton W. Chace of the Los Angeles County Board of Supervisors. An expanded program of organized community activities at the park has been planned for the month of June by recreation personal of the Los Angeles County Department of Parks and Recreation, the supervisor said. The increase in recreation events was made possible by

the Board of Supervisors authorizing the improvements, and the installation of new posts, reflectors, and restringing of lights on the park's tennis courts. The increase in recreation events was made possible by the park's community building which include the addition of concrete walks, installation of new roofing for a portion of

IT'S A WOMAN'S WORLD . . .
YET WHERE TO GO FOR HER PERMANENT WAVE IS EVERY WOMAN'S PROBLEM!

Since this is the Age of the Specialist and that's what we are—we offer a unique answer to your hair problem! You go to a Specialist for your eyes . . . your teeth . . . why not your hair? You'll be Pleasantly Surprised to Find the Difference 'Specialization' Makes.

YOUR CHOICE OF TWO LOCATIONS FOR YOUR GOLD WAVE

OPEN 8 A.M. TO MIDNIGHT
NO APPOINTMENT NEEDED

BUDGET COLD WAVES \$4.95 - \$5.95
Complete

Staffed by the most experienced "Specialist-Trained" permanent wavers on the West Coast.

GET THE LOVELIEST WAVE YOU EVER HAD AND SAVE MONEY!

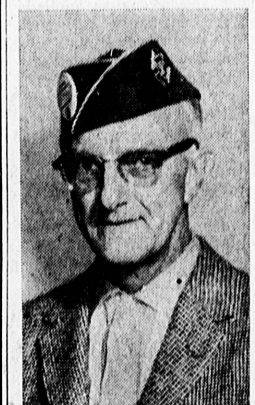
Reg. \$10.00 TRIPLE OIL Including Haircut, Shampoo & Set Complete \$7	LIMITED TIME ONLY Reg. \$15.00 CREME EMULSION Including Haircut, Shampoo & Set Complete \$8	Reg. \$20.00 PURE LANOLIN Including Haircut, Shampoo & Set Complete \$10.95
---	--	---

1115 Satorri Ave. FA. 8-7730
(Next to Mode O'Day) TORRANCE, CA

Some Services and Prices at
Inglewood—OR 1-9480
207 N. Market (3 doors North of Regent St.)
Long Beach—HE 7-0929
251 E. 5th St.

GLORY
PERMANENT WAVE SHOP

AD MUST BE PRESENTED FOR SPECIALS.



LYLE O'HARA



JOSEPH PIATT

Lyle O'Hara Elected Grand Knight Of K. C. Council

Lyle O'Hara, of 1615 Fern Ave., was elected grand knight of the Los Crusados council of the Knights of Columbus, and three other Torrance area residents captured the next three top offices in the annual election conducted by the fraternal organizations this week. The council's second office

of deputy grand knight was won by Stacy Rodman, while Joseph Piatt was elected to the third ranking office of chancellor. Larry Sargent was the successful candidate for the position of warden, and Jerry Tondre of Rolling Hills was elected the new recording secretary. John McVey of Torrance will serve the council as advocate during the coming year. Paul Hogen was re-elected treasurer. The grand knight-elect resides with his wife, one son, and three daughters. He is associated with the Knolls Construction Co. Howard Hood is the outgoing grand knight of the Los Crusados council.



Announcing the . . .

Opening

of . . .

Palos Verdes Floral

We are proud to announce the opening of the South Bays largest and most complete floral shop.

... "Specializing in everything Floral for Weddings and Funerals"

- CORSAGES • FRESH CUT FLOWERS
- FLOWERS TELEGRAPHED • FLOWERING PLANTS
- HOUSE PLANTS • FUNERAL WREATHS, SPRAYS

PALOS VERDES Floral

1725-A S. Catalina Ave. • FR 8-5533 • Hollywood Riviera

another

BLUE CHIP REDEMPTION STORE

NOW OPEN

SAN PEDRO

111 South Pacific

Store hours: 9:30 a. m. to 5:30 p. m.
Tuesday thru Saturday
(Closed Sunday and Monday)

Hundreds of nationally advertised items for Western living . . .

OTHER REDEMPTION STORES NOW OPEN

- | | |
|---|--|
| LOS ANGELES
5464 Wilshire Blvd.
4307 Leimert Blvd.
6212 Manchester Blvd.
8207 South Western Ave. | ONTARIO
218 North Euclid |
| EAST LOS ANGELES
4920 Whittier Blvd. | PASADENA
676 East Green Street |
| COMPTON
1117 E. Compton | RIVERSIDE
2710 8th Street |
| LONG BEACH
2726 E. Anaheim Blvd. | SAN BERNARDINO
146 West Baseline |
| MONROVIA
601 South Myrtle | SANTA ANA
501 West Fourth St. |
| NORTH HOLLYWOOD
5133 Lankershim Blvd. | SANTA MONICA
1450 Second Street |
| | VAN NUYS
5200 Kester Avenue |

Soon! Over 40 beautiful and fully-stocked redemption stores to serve Southern California!



Always shop where you see the Blue Chip sign

Open Friday evenings until 9:00

JUNE SALE

... our annual clearance of outstanding

FURNITURE

This is the sale of the year that you've been waiting for . . . when we offer our regular lines of fine furniture at extra savings. Many items are floor samples and one-of-a-kind. All pieces are subject to prior sale. A few of the tremendous bargains are listed here. . . .

SALE LAMPS	Reg. Price	Sale Price
47" Table Lamp, blue oriental base	\$110.00	\$50.00
49" Table Lamp, antique white base	79.00	39.00
48" Table Lamp, gold leaf shade and base	67.50	35.00
47" Table Lamp, antique white, highly styled with blue and gold accents	99.00	25.00
44" Table Lamp, inlaid mother-of-pearl on black lacquer base	115.00	65.00
32" Table Lamp, contemporary styling	24.50	18.00
35" Table Lamp, white with black accent	14.95	8.50

UPHOLSTERED PIECES	Reg. Price	Sale Price
90" Quilted Gold Sofa, loose pillow back, large round gold casters	565.00	395.00
100" Quilted Loose Pillow Back Sofa	570.00	450.00
96" Tuxedo Arm Sofa, foam pillow back	295.00	225.00
2-Pc. Sectional and corner table with drawer, Blue fabric	485.00	385.00
Club Chair, loose pillow back—color toast	239.00	175.00
Club Chair—swivel base—brown	229.00	150.00
Freeform Sofa, one-piece—gold	475.00	350.00
Occasional Chair, tufted back—gold	135.00	99.00
Large green quilted Provincial Chair	195.00	115.00
Provincial Chair—orange fabric	195.00	115.00
Club Chair—foam cushion seat—blue green	105.00	79.50

DINING FURNITURE	Reg. Price	Sale Price
5-Piece Heywood-Wakefield Dining Set—oval table—4 chairs—cherry finish	267.00	175.00
Drexel Cherry Buffet—Suncoast	219.00	175.00
7-Piece Early American Dining Set, light walnut, round extension table, four captains chairs—china top and base	519.00	350.00
Rolling Buffet—oil—walnut	139.00	95.00
6-Piece Birch Dining Set—Round extension dining table, 4 chairs, Cabinet Buffet	380.50	275.00

BEDROOM FURNITURE	Reg. Price	Sale Price
Triple Dresser and Mirror—Heywood-Wakefield, birch wood, cherry finish	318.00	225.00
Cherry Matching Twin Bed	39.00	29.00
Walnut Triple Dresser, oil finish	225.00	175.00
Drexel Dresser—white and gold	69.50	45.00
Oil Walnut 2-Drawer Chest and Base	79.00	49.00

OCCASIONAL FURNITURE	Reg. Price	Sale Price
Chairside Table—Heywood-Wakefield L 28" W 22" H 16"—one drawer	79.00	52.50
Walnut Cabinet—L 27" W 17" H 22"	84.95	65.00
Walnut Cabinet L 52" W 17" H 29"	199.95	145.00
Rosewood (mahog. finish) Cocktail Table	69.00	49.00
Rosewood (mahog. finish) Desk	135.00	95.00
Pine Cocktail Table with brass tray	75.00	25.00
Square Mosaic Tile Table 15"x15"	27.00	19.00
48" Black Lacquer Console	85.00	65.00
Teak Drop Leaf Desk	139.00	109.00

And Many Other Outstanding Values

California HOME FURNISHINGS

29229 S. WESTERN AVE., SAN PEDRO • TE 3-4000 • SP 5-1489 • (WESTERN PLAZA ADJACENT TO BECK PARK)