

# ARE YOU ELIGIBLE?

# CMA

CONSUMERS MART  
OF AMERICA

TO JOIN THE WORLD'S LARGEST  
MEMBERSHIP Dept. Stores

## CONSUMERS MART OF AMERICA

# GRAND OPENING

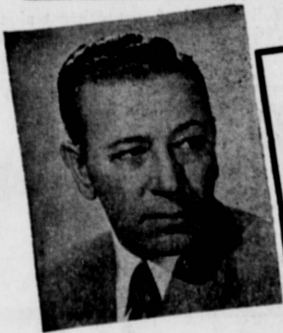
2nd Great Store

20225 So. Western Ave. JUST NORTH OF TORRANCE BLVD.

THURS. APRIL 20th  
**TORRANCE**

**YOU CAN MEET**  
★ **JERRY LEWIS** and  
★ **GEORGE RAFT** IN PERSON  
12 NOON, THURS., APR. 20—OPENING DAY

**CMA Anaheim & Torrance Open to the Public**  
PREVIEW WEEK APRIL 20-26, ONLY!



An Invitation from  
**GEORGE RAFT**  
Vice President of CMA

To my Southern California friends  
I would like to extend a cordial invitation  
to all of my friends who are eligible, to visit  
and join CMA.

I am very gratified and happy to be part  
of a venture that will do so much towards  
stretching your dollar in these times of in-  
flation and high costs of living.

I am looking forward to seeing you and  
greeting you personally during our grand  
opening week.

Best Wishes,  
**George Raft**

**COMPLETE SHOPPING CITY  
AND GIANT SUPER MARKET**

★ 15 ACRES ★ SERVICE STATION ★ PARKING FOR 1500 CARS  
★ 152,000 SQUARE FEET OF QUALITY-SERVICE-VALUES

**What Can You Buy at CMA? Why Should You Join CMA?**

Everything for your HOME, FAMILY and CAR  
• Auto Supplies • Furniture • Home Furnishings • Men's, Women's, Girls' and  
Boys' Clothing • Toys • Gifts • Jewelry • Sundries Dept. • Liquors • GASOLINE  
SERVICE STATION • Hardware • Infants' Wear • Radio-TV • Record Room  
• Snack Bar • Luggage • Sporting Goods • Paint Shop • Dress Fabrics • Cameras  
• Linens & Domestic • Shoes • MANY MORE DEPARTMENTS—ON ONE FLOOR!

... If eligible! YOU SAVE Hundreds of Dollars Annually... Because of Pool  
Purchasing Power, Low Overhead, Modern Economy in Buying, Selling, Transportation  
and Handling! Savings up to 50% • EVERYDAY Low Prices, Store-Wide • National Brands, All  
First Quality Merchandise • One-Floor Shopping • Air Conditioned Year Round  
• Acres of Free, Paved, Lighted Parking — for 1500 Cars • On-the-Spot Credit  
• Checks Cashed Free for CMA Members • Service for Your Car • Many Extra  
Benefits ONLY for you.

**PLUS 32,000 SQ. FT. SUPERMARKET** A WONDERLAND OF FRESH MEAT, PRODUCE, GRO-  
CERIES AT HUGE SAVINGS. CMA MEMBERS ONLY!

**CMA Is Your Store If You Are**

- Government Employee — City, County, State or Federal.
- Member of the Armed Forces or U.S. National Guard (Active or Retired)
- Public Service or Public Utility Employee (Phone, Power, Gas, Water)
- Employee of Non-Profit Public Service Organization
- Receiving Govt. Pension, Annuity or Social Security Payments
- Employee of firm working under Government Supervision or Contract

**ANNUAL MEMBERSHIP FEE \$2.00**

**Store Hours:**

Tues.—Fri.  
12:30 to 9:30 P.M.  
Sat. 9 A.M. to 6 P.M.  
Sun. Noon to 6 P.M.

**CLOSED MONDAYS**

Except Preview Week

**GRAND OPENING CELEBRATION in TORRANCE!**

★ Meet **JERRY LEWIS** Starring in "Ladies Man" & **GEORGE RAFT** in Person!  
**OPENING DAY, NOON THURS., AT CMA TORRANCE**

★ **KTLA SALUTES CMA-WEEK ON TV** SEE THRILLING TELECASTS DAILY FROM CMA — TORRANCE — STARTS THURSDAY

★ **LARRY FINLEY** ★ **SKIPPER FRANK** ★ **BOZO THE CLOWN**  
★ **DOROTHY GARDINER** ★ **TOM HATTON (Popeye)** ★ **Disc Jockeys—In Person**  
Plus Popular Radio

# CMA

YOU MUST SHOW PROOF OF ELIGIBILITY!  
**Membership Application**

CONSUMERS MART OF AMERICA  
World's Largest Membership Dept. Stores

1440 S. Los Angeles St., ANAHEIM 20225 S. Western Ave., TORRANCE

The sum of \$2 is tendered, 1.50 for subscription to CMA News, 50¢ for non-assessable, non-transferable Annual Registration in the above organization by the undersigned applicant, who agrees to abide by the rules and regulations thereof.  
Name ..... Date .....

Address ..... City ..... Zone .....

Home Telephone ..... Work Telephone ..... Approved By .....

Employed by .....

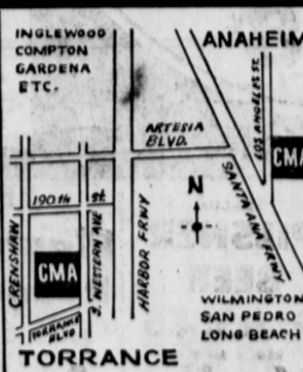
I am eligible as a .....

(Fill in Group)  
I hereby certify the above information to be true and I further understand only myself or spouse may use my Registration Card. Any misrepresentation, impersonations, or abuse of privileges will result in cancellation of my registration.

(Applicant's Signature) (Spouse's Signature—may use same card)

FEE REFUNDED WITHIN 60 DAYS IF NOT SATISFIED

ALL ROADS LEAD TO CMA



CMA ANAHEIM  
1440 S. LOS ANGELES ST.

Just Across the Highway from Disneyland



**GENERAL PUBLIC ADMITTED PREVIEW WEEK, APR. 20-26**