

# AT ZODYS YOU BUY MORE



**VERSATILE SPRING TOPPER IN JERSEY KNIT 10.77**

Left, boxy topper with double breasted styling featuring six shiny golden buttons, shawl collar, taffeta lining; 8 to 16. Right, long topper with knit insert trimming the collar; measures 30 inches long; 8-18. Both of 80% orlon, 20% wool laminated jersey knit in beige, red, black.



**CHECK COORDINATES 2.47 blouse**

Left, short sleeve blouse with wide collar trimmed with four rows of lace, repeated on sleeve. Shirred skirt offers a full 102-inch sweep with fashionable 6-inch deep hem.

**3.37 skirt, slacks**

Right, feminine blouse with large platter collar trimmed with flower-sprig applique and deep heavy lace. Shown with tapered capri, fully lined with high-rise waist and wide self-belt.



**RUFFLES 'N RIBBON EASTER FASHION 4.87**

5.99 value  
Sheer pure silk organza with lustrous satin ribbon-and-bow trim, two-tier butterfly sleeves of delicate Schiffo embroidery to match ruffle on full, full skirt with attached parchment petticoat. Pink, blue, maine; 3-6x.

**3-PIECE PLAYSUIT FOR 3-6x & 7-14 1.67**

2.99 value  
Firmly woven fine cotton three-piece play set with plaid sleeveless shirt in tones to match the solid-color poplin shorts and pedal pushers. Available in assorted "ice cream" pastel; for 3 to 6x and 7 to 14.

FABULOUS

# ZODYS

COMPLETE SELF SERVICE DEPARTMENT STORES



**SHINY PLASTIC PATENT HANDBAG 2.74\***

Excellent assortment of spring-to-summer bags in many sizes and shapes. Black patent, navy, bone, white \*plus 10% fed. tax.



**"EASTER PARADE" BETTER MILLINERY 1.67, 2.27**

Elegant flowers and interesting textured straws in white, dion blue, pink, mint, lilac, daffodil and vibrant orange.



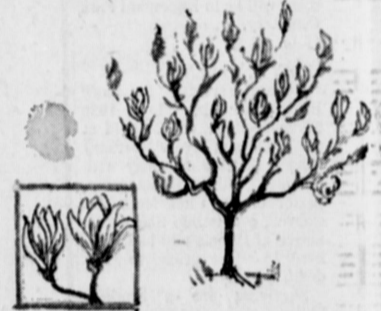
**MEN'S & WOMEN'S FINE WATCHES 14.94\***

29.75 values  
Fully jeweled movement, expansion bands, dressy and sport styles in white or yellow gold; has full one-year guarantee.



**EXQUISITE LIFE-LIKE ROSES 76c dozen**

Lovely, long-stemmed, ten petal roses of soft, natural looking plastic in an assortment of rich, glowing shades.



**SPRING SPECIAL! SUPERB FRAGRANT MAGNOLIA BUSH 1.87**

Delightful magnolia bush to create a huge spring bouquet in your garden. Grows to about 8 to 10-foot high and in early spring before the leaves appear it is covered with purplish-pink buds that open white.



**GIANT 24x60" ALUMINUM FOIL 7.9**

A full 24x60-inch tantalizing material to party vents table from open. Made of sturdy ham.

**SHEATH AND DUSTER ENSEMBLE OF EMBOSSED CHROMSPUN**

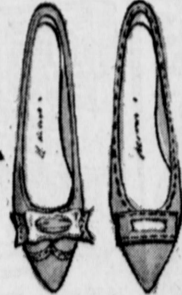
**8.47** 10.99 value

Simple styling delicately underplays the ornate, lustrous fabric in this two piece ensemble. Sheath dress has scoop neck, tiny cap sleeves and flat bow at midriff with a pencil slim skirt. Matching three-quarter duster has wide, wide wing collar and is fully lined. Choose blue, beige or lilac in regular sizes 12 to 20 and also in sizes 14 1/2 to 22 1/2 for the fuller figure.



**BEAUTIFUL FASHION PUMPS 9.47**

Hi and mid-heels in classic opera style plus other dressy and tailored styles. Black patent, bone; N 7-10, M 5-10.



**TEEN, WOMEN'S SPORTY FLATS 3.87**

Buttery-soft leather flats with buckle or bow trims; some with needle-toe. Black or bone. Available in sizes 5 to 9.



**YOUNG MISSES' PATENT PUMPS 4.97, 5.97**

Button 'n strap style black patent pumps with new taper-toe styling. Sizes 9 1/2 to 12, 4.97. Sizes 12 1/2 to 3, 5.97.



**BOYS' STURDY Z-WELT OXFORDS 4.97, 5.97**

Moc-stitched oxford in supple black leather with sturdy Goodyear welt. 8 1/2-12, 4.97; 12 1/2-3, 5.97. Also 3 1/2-6, 6.47.



**INFANTS' GAY CRAWLER SETS 2.47**

Boys' and girls' 100% cotton wash 'n wear sets in butcher style, applique on knee. Beautiful assortment of pastel styles; S, M, L.



**TV IDEAL'S MONKEY STIX 59c, 1.19**

Newest toy sensation as seen on TV; colorful, flexible polyethylene stix with notched ends to build anything imaginable.



**MFG'S CLOSEOUT TOSS PILLOWS 57c**

12 1/2" size pillows in wide variety of decorative fabrics, plumply filled. Choose from many colors to accent your decor.

**Shop every night 10 A.M.-10 P.M.- Sunday, 10 A.M.-6 P.M.**

• Huge parking