

The Home of The Low Price King • The Home of The Low Price King



GOLDEN WEST

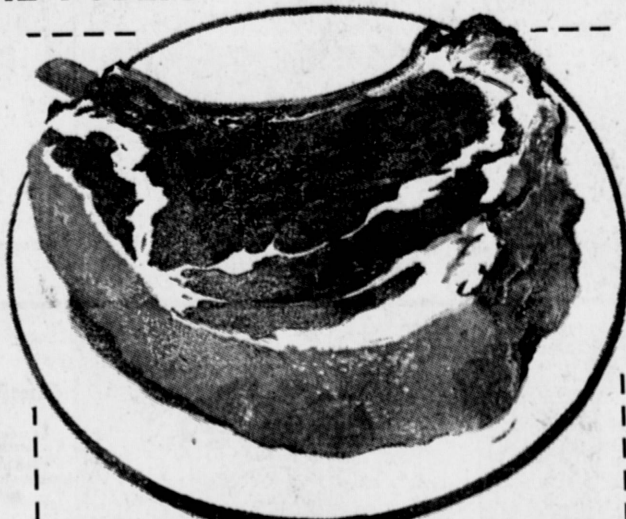
WHOLESALE MEATS

OPEN TO THE PUBLIC - DAILY 9 A.M TO 6 P.M.

The Home of The Low Price King • The Home of The Low Price King • The Home of The Low Price King • The Home of The Low Price King • The Home of The Low Price King

The Home of The Low Price King • The Home of The Low Price King • The Home of The Low Price King • The Home of The Low Price King • The Home of The Low Price King

BONELESS
SPENCER STEAKS
98 ^c/_{lb}



PRIME RIB ROASTS

THE GRAND-DADDY OF ALL ROASTS — OVEN-READY — CHINE BONE & ALL EXCESS FAT REMOVED

63 ^c/_{lb}

FILET MIGNON STEAKS

By the Piece

\$1.19 ^c/_{lb}

BONELESS
STEWING BEEF **59** ^c/_{lb}

Best for Flavor
TOP SIRLOIN STEAKS **98** ^c/_{lb}

FULL CREAM, MONTEREY
JACK Cheese **49** ^c/_{lb}

BONELESS
PORTER H'SE STEAKS **98** ^c/_{lb}

TABLE-TRIMMED, TENDER

T-BONE STEAKS
89 ^c/_{lb}

Swift's Premium Genuine Spring
LEG O' LAMB **59** ^c/_{lb}
USDA "Choice" or "Prime"

Extra Lean,
GROUND CHUCK

Ground Fresh Every 15 Minutes
39 ^c/_{lb}



3 Big Locations

No. 1 —
250 W. 116 Street
Los Angeles

No. 2 —
385 N. Hawthorne Blvd.
Hawthorne

No. 3 —
2241 Hawthorne Ave.
Torrance

The Home of The Low Price King • The Home of The Low Price King