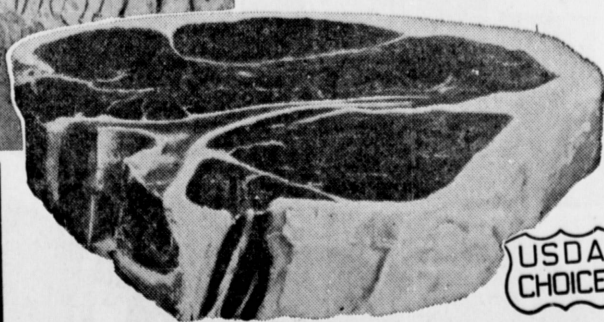


AGING

One Reason There's
No Place Like Safeway
For Superb Meats...

Because Safeway Knows
How To Age Beef!



T-Bone or Club
U.S.D.A. Choice Beef
Steak—Aged and
Trimmed—Full
Flavored Perfection!
lb. **\$1⁰⁹**

New York Cut
The "King of Steaks"
U.S.D.A. Choice Beef
Boneless. Fully
Aged and Trimmed
lb. **\$1⁷⁹**

Delicatessen Buys!

Monterey Jack Cheese lb. **59^c**
Swiss Cheese Dutch Mill Natural, Sliced 4-oz. pkg. **39^c**
Lucerne Salads Cole Slaw Carrot-Raisin pint ctn. **33^c**
Skinless Wieners Sterling Brand 1-lb. ctn. **49^c**

Safeway Superb Boneless Beef

Sirloin Tips Steaks or Roasts lb. **89^c**
Top Round Boneless Steaks lb. **89^c**
Cube Steaks No Waste lb. **89^c**
Rump Roast Boneless Beef lb. **89^c**
Round Roast Top or Bottom lb. **89^c**

Porterhouse
U.S.D.A. Choice Beef
Steak—Aged and
Trimmed—Full
Flavored Perfection!
lb. **\$1¹⁹**

Top Sirloin
U.S.D.A. Choice
Boneless Beef Steak
Aged and Trimmed
Excellent to Broil
lb. **\$1³⁹**

Flaked Steaks Grand Duchess 10-oz. pkg. **49^c**
Halibut Steaks Center Cut Northern lb. **59^c**
Whiting Eastern 5-lb. ctn. \$1.39 lb. **29^c**
Pink Shrimp Medium Size lb. **69^c**

**But How
Does Aging
Improve Beef?**

Proper aging makes beef more tender and brings out the full rich flavor of the beef. Safeway has a quarter of a century of experience in aging superb beef. You get the benefit of 25 years of experience every time you buy a Safeway beef roast or steak. No wonder people everywhere say, "There's no place like Safeway for superb meats."

Rath's Bacon
Wafer-Thin Sliced
Approximately
35 Slices
to Pound 1-lb. pkg. **69^c**
Regular Sliced 1-lb. pkg. **69^c**

**Yuban
Coffee**
Regular, Drip or Fine
1-lb. can **59^c**

Why Pay More? Shop Safeway!

Heinz Ketchup Regular, 14-oz. bottle Hot, 12-oz. bottle each **19^c**
Pork & Beans Van Camp's Ideal for quick meals 5 31-oz. cans **\$1⁰⁰**
Liquid Detergent Scamper Includes 10¢ Off 22-oz. can **49^c**
Graham Crackers Busy Baker 2-lb. pkg. 57^c 1-lb. pkg. **29^c**
Preserves and Jellies Empress Brand 4 10-oz. jars **\$1⁰⁰**

Apricot-Pineapple, Peach, Plum, Strawberry Preserves; Crabapple, Grape, Plum, Strawberry Jellies

**Safeway
Flour**
Kitchen Craft Enriched White
5-lb. Bag **39^c**

Big Buys in Small Type!

Erland's Mushrooms Stems and Pieces 2 2-oz. cans **29^c**
Ritz Crackers Nabisco Baked Snack Crackers 12-oz. pkg. **33^c**
Link Pork Sausage Rath Brand 8-oz. can **43^c**
Palmolive Toilet Soap 2 both bars **31^c**
Ivory Laundry Soap 2 large bars **35^c**

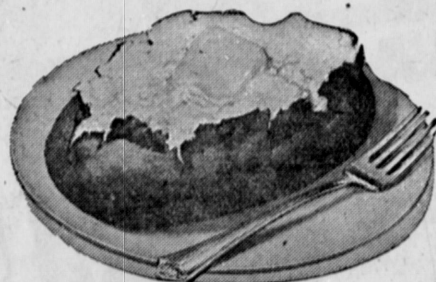


Plastic Ware

Available at most Safeways

Laundry Basket, Dish Pan, E-Z Pourpail, Waste Basket or Set of 2 Cutlery Trays Your Choice each **88^c**

**U.S. No. 1 Idaho Russet
Potatoes**
A perfect companion for a juicy Safeway Steak
10-lb. pto bag **49^c**



Fresh Tomatoes Red Ripe 13-oz. tube **25^c**
Banana Squash Delicious Baked lb. **6^c**
Winesap Apples Northern Grown 4-lb. pto bag **59^c**

Values in Frozen Foods!

Bel-air Spinach Leafy or Chopped 6 12-oz. pkgs. **\$1⁰⁰**
Orange Juice Cal Fame Fresh Frozen 5 6-oz. cans **\$1⁰⁰**
TV Dinners Swanson's—Choice of nine varieties each **59^c**
Strawberries Bel-air Sliced 4 10-oz. pkgs. **\$1⁰⁰**
Ice Cream Party Pride, Catering Quality—Popular Flavors 2 pint ctns. **39^c**

Lucerne Slenderway "900 DAILY DIET"
Vanilla or Chocolate Quart Carton **89^c**
"Easy Simple Way to Reduce"

**Cream o' the Crop—Fresh
Grade "AA" Eggs**
Mediums carton of one dozen **49^c** Large carton of one dozen **53^c**
**Tuna Time
Chunk Tuna**
Light Meat 4 6 1/2-oz. cans **\$1⁰⁰**

PRICES EFFECTIVE Thurs., Fri., Sat., Sun., Jan. 12, 13, 14, 15, 1961 at local Safeway Stores



SAFEWAY

Applicable taxes collected. Subject to stock on hand. We reserve the right to limit quantities and not sell to other merchants. Merchandise sold in quantities as advertised.

Blue Chip Stamps given with each purchase except fluid milk products, cigarettes, tobacco alcoholic beverages or magazines.



The GOLDEN BOOK Illustrated ENCYCLOPEDIA for Young People
3 More Weeks To Complete Your Set Golden Book Encyclopedia offer Expires Jan. 31st

Carson at Western, TORRANCE—101 Hwy. at Narbonne, LOMITA