

The Home of The Low Price King • The Home of The Low Price King



# GOLDEN WEST

## WHOLESALE MEATS

OPEN TO THE PUBLIC - DAILY 9 A.M TO 6 P.M.

The Home of The Low Price King • The Home of The Low Price King • The Home of The Low Price King • The Home of The Low Price King

The Home of The Low Price King • The Home of The Low Price King • The Home of The Low Price King • The Home of The Low Price King

BONELESS SIRLOIN TIP

OR TOP ROUND

### ROLLED ROAST

# 69

¢ lb

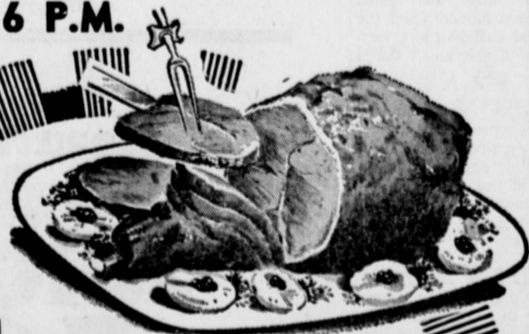
Extra Lean, Tender Beef — No Waste  
Ready for Your Oven

BONELESS, LEAN

### BEEF STEW

# 59

¢ lb



SWIFT'S PREMIUM

USDA "Choice" or "Prime" GENUINE SPRING

### LEG O' LAMB

# 59

¢ lb

A TREAT FOR THE ENTIRE FAMILY

BONELESS ALL LEAN, WASTE FREE

### CUBE STEAKS

# 79

¢ lb

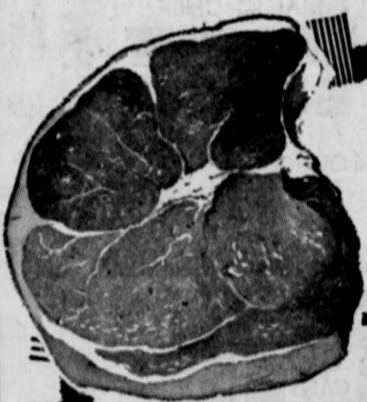
FRESH PURE PORK

### SAUSAGE

OUR OWN DELICIOUS SAUSAGE

# 39

¢ lb



BONELESS WASTE FREE

### TOP ROUND OR SIRLOIN TIP STEAKS

PERFECT FOR FRYING OR BROILING

# 79

¢ lb

GOLDEN WEST'S FAMOUS

### LUNCH MEATS

Over 10 Varieties of Popular lunch meats to choose from

# 2 1 00

LBS

FRESH LEAN, CENTER CUT

### PORK CHOPS

# 79

¢ lb

Extra Lean, Fresh Ground

### GROUND CHUCK

# 39

¢ lb



We unconditionally guarantee complete satisfaction or any purchase price shall be returned in full.

EVERY CUT IS BONDED

### 3 Big Locations

No. 1 — 250 W. 116 Street  
Los Angeles

No. 2 — 385 N. Hawthorne Blvd.  
Hawthorne

No. 3 — 22411 Hawthorne Ave.  
Torrance

The Home of The Low Price King • The Home of The Low Price King