

5035 PACIFIC COAST HWY.  
CORNER CALLE MAYOR—  
TORRANCE

# VON'S and Shopping Bag

# Everything for your Thanksgiving Feast

We're Celebrating the  
**GRAND OPENING**  
Of Another New Von's Market  
**GRANADA HILLS**

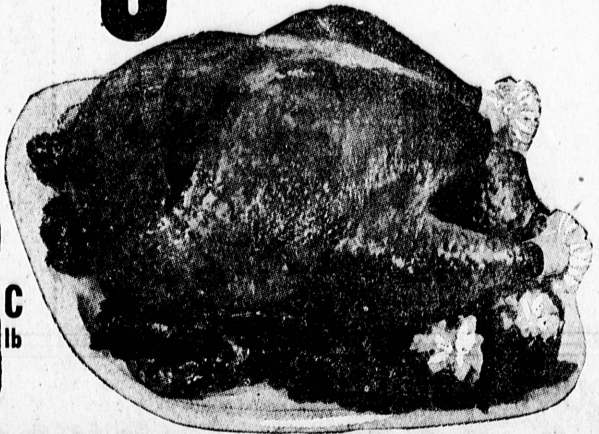
Come to Your Nearby Von's or Shopping Bag This  
Week-End . . . We're Celebration This New Store  
Opening with Extra Big Savings for You!

## TURKEYS

U.S.D.A. GRADE A—CALIFORNIA GROWN

**HENS** 10-13 lbs. Avg. Wt. Oven Ready **39<sup>C</sup> lb**

**TOMS** 18-24 lbs. Avg. Wt. Oven Ready **35<sup>C</sup> lb**



**PIES**

COUNTY FAIR FROZEN  
Apple, Pumpkin, Mince  
8 Inch Size **3<sup>F</sup> \$1<sup>R</sup>**

OCEAN SPRAY  
**Cranberry Sauce**

Jellied or Whole 300 Can **2<sup>F</sup> 29<sup>C</sup> R**

AUNT POLLY'S  
**Turkey Stuffing**

Southern Style 14 oz. pkg. **49<sup>C</sup>**

SOLID PACK  
**Libby's Pumpkin**

For Delicious Pies, 2 1/2 Can **2<sup>F</sup> 25<sup>C</sup> R**

**BUTTER**

JERSEYMAID  
1ST QUALITY GRADE AA 1 Lb. Ctn. **69<sup>C</sup>**

**Pork Loin Chops**

Tender-Juicy-Fresh  
Trimmed Pan Ready  
RIB END **49<sup>C</sup> lb**



**Pork Loin Roasts**

Fresh Eastern  
Grain Fer Pork  
RIB END ROASTS **49<sup>C</sup> lb**

**MUSHROOMS**

BRANDYWINE  
STEMS AND PIECES  
LARGE 4 OZ. CAN **3<sup>F</sup> \$1<sup>R</sup>**

Center Cut Loin Chops . . . 79<sup>C</sup>  
Center Cut Rib Chops . . . 69<sup>C</sup>  
Loin End Pork Chops . . . 53<sup>C</sup>

Loin End Pork Roast . . . 53<sup>C</sup>  
Loin Half Pork Roast . . . 59<sup>C</sup>  
Rib Half Pork Roast . . . 53<sup>C</sup>

**PURE PORK SAUSAGE** Seasoned Just Right In The Bulk **39<sup>C</sup> lb**

**FRESH GROUND BEEF** Extra Lean And Flavorful **39<sup>C</sup> lb**

SWIFT'S PREMIUM SLICED BACON 1 lb. pkg. **59<sup>C</sup>**

FARMER JOHN SAUSAGE LINKS 2 1/2-lb. Pkgs. **49<sup>C</sup>**



**FISH DEPT. FEATURES**

COOKED & PEELD FANCY SHRIMP, 12 oz. pkg. . . . 79<sup>C</sup>

CENTER CUT SWORDFISH STEAKS . . . 79<sup>C</sup>



U.S. NO. 1 COLORADO RED ROSE  
**POTATOES** 10 lb. bag **39<sup>C</sup>**

Thin Skinned . . . Best For Boiling or Mashing

FRESH Anjou Pears New Crop Sweet 'n Juicy 2 lbs. **25<sup>C</sup>**

FRESH Cranberries Ocean Spray 1 lb. Package **15<sup>C</sup>**

FANCY Black Grapes Sweet Ribiers 3 lbs. **25<sup>C</sup>**

**Festive Foods 'n Fixin's**

HUNT'S WHOLE Spiced Peaches 2 1/2 Can **25<sup>C</sup>**

HEINZ Whole Sweet Pickles 25 oz. Jar **49<sup>C</sup>**

SAN FERNANDO Colossal Ripe Olives Tall Can **29<sup>C</sup>**

YORK COUNTY STEWED Whole Dutch Onions 16 oz. Can **29<sup>C</sup>**

ORICA Mandarin Oranges 11 oz. Can **25<sup>C</sup>**

SNOW CROP FROZEN Petite Sweet Peas 10 oz. Pkg. **29<sup>C</sup>**

DUBUQUE IOWA  
**Canned Hams**

From the Land of Corn . . . Boneless . . . Waste Free 5-lb. Can **\$3<sup>95</sup>**

SAUERKRAUT Homemade Fresh 22 oz. Jar. . . . **25<sup>C</sup>**

ENCHILADAS Our Own Fresh or Froz. Cheese or Beef 3 pkgs. of 2 **\$1<sup>00</sup>**

POLISH SAUSAGE Rede-Serve 8 oz. pkg. . . . **49<sup>C</sup>**

NOW IN KING SIZE CANS  
**Keg Beer**

1/2 qt. CANS **3<sup>99</sup>**

Case of 24

PICTSWEET  
**Green Peas**

Frozen 10 oz. Pkg. **2<sup>F</sup> 29<sup>C</sup> R**

ARIZONA  
**Grapefruit**

Sweet Juicy 8-lb. Bag **39<sup>C</sup>**

From Our Own BAKERY  
**Family Style FRUIT CAKE**

Check Full of Fruits and Nuts  
FULL 2 LB. SIZE **98<sup>C</sup>**

Los Olivos Manzanilla 4 1/2 oz. Jar **33<sup>C</sup>**

STUFFED OLIVES 4 1/2 oz. Jar **33<sup>C</sup>**

Borden's—16 Servings INST. POTATOES . . . pkg. **45<sup>C</sup>**

Dunbar MED. SHRIMP . . . 4 1/2 oz. Can **55<sup>C</sup>**

Orleans COVE OYSTERS . . . 8 oz. Can **49<sup>C</sup>**

Rusck Spiced CRAB APPLES . . . 14 oz. Jar **3<sup>F</sup> 51<sup>R</sup>**

Schilling HOLIDAY SPICES

Pumpkin Pie Spice . . . 1 1/4 oz. **27<sup>C</sup>**

Poultry Seasoning . . . 1/2 oz. **17<sup>C</sup>**

Ground Cinnamon 1 1/4 oz. **21<sup>C</sup>**

Jerseymaid EGG NOG . . . 4 1/2 qt. Cn. **49<sup>C</sup>**

Rich's WHIP TOPPING . . . 10 oz. Pkg. **49<sup>C</sup>**

Betty Crocker's PIE CRUST MIX . . . 9 oz. Pkg. **21<sup>C</sup>**

Circus MIXED NUTS . . . 13 oz. Can **89<sup>C</sup>**

Kleenex TABLE NAPKINS . . . 25 Ct. **27<sup>C</sup>**

Van de Kamp's BAKERIES  
At All Von's Markets

Butterhorn COFFEE CAKES pkg. of 4 **39<sup>C</sup>**

BRAN MUFFINS pkg. of 6 **29<sup>C</sup>**

POULTRY DRESSING 7 1/2 ozs. **29<sup>C</sup>** 14 ozs. **49<sup>C</sup>**

Chocolate PECAN CAKE ea. **98<sup>C</sup>**



Prices Effective  
NOV. 17-18-19-20

LIMIT RIGHTS RESERVED  
TAX ADDED WHERE APPLICABLE