

Obituaries

FORREST L. HOSTETLER

Funeral services for Forest LeRoy Hostetler, 50, of 1820 Torrance Blvd., were held Monday morning at the Halverson-Levell Mortuary Chapel with the Rev. Gilbert Zimmerman of the First Methodist Church of Torrance officiating. Mr. Hostetler, a native of Minot, N.D., had lived here for three years prior to his death Friday.

Before his death, he was employed for two years as a security guard by the Pacific Plant Protection Co.

Surviving Mr. Hostetler are his widow, Elsie, of the home address; a son, Roy, of Alberta, Canada, and three grandchildren. Interment was in Green Hills Memorial Park.

LILLIAN SNOW

Notice of funeral services for Mrs. Lillian Snow, 55, wife of Jack Snow, 1520 Beech Ave., published here Sunday incorrectly identified her as Helen Snow. Mrs. Snow, who had resided here for 33 years, was assistant registrar at Harbor General Hospital for 14 years. She was a member of St. Cecilia's Guild at St. Andrew's Episcopal Church, and the Rev. Hugh Percy, rector of St. Andrew's, officiated at services Tuesday at Stone and Myers Mortuary Chapel.

The name of one sister surviving Mrs. Snow also was listed incorrectly. She is survived by two sisters, Carrie Squires and Mary Becker, both of Ohio, and three brothers, George, John and Frank Heitche. Interment was at Green Hills Memorial Park.

... YMCA

(Continued From Page 1) according to Manager Wilcox. Last year's "Good Neighbor," High School Administrator Cliff Graybehl, is recuperating at his home this week at 1122 Maple Ave. after undergoing throat surgery. He plugged the YMCA breakfast as an outstanding event yesterday by writing out his best wishes for his successor on a handy slate. He can't talk yet, but he can walk, and he promises to be at the breakfast himself Saturday.

... Zoning

(Continued From Page 1) and Councilman Willys Blount supported the planning commission's recommendation that the rezoning be denied.

The first roll call on the matter was split 3-3 with Councilman J. A. Beasley still absent after a heart attack. At the end of the voting, Councilman George Bradford asked to change his vote to favor the rezoning. He did not explain the reason for his switch.

School Superintendent J. H. Hull at Tuesday's board session placed some of the blame for the school's present financing dilemma on the city's past rezoning policies which have opened up industrial land for residential development.

Torrance's Newest Residential HOTEL

• Large Rooms
• Daily and Low Weekly Rates
PRIDE HOTEL
1806 Cabrillo Ave.
Torrance

... Labor

(Continued From Page 1)

John Handy and John Quimby, president and secretary of San Diego Labor Council; William J. Bassett, secretary-treasurer of Los Angeles County Federation of Labor (AFL-CIO); William Fillipine, secretary of Santa Barbara Building Trades Council; George Lackey, secretary of Kern County Building Trades Council, and I. Ham-mell, Kern County Central Labor Council official.

PROPOSITION 6, appearing on the November ballot, would provide for assessment of golf courses as recreational facilities and not as potential commercial or industrial sites. It is not a tax exemption nor a tax subsidy.

Predicting overwhelming la-

bor support of Proposition 6, the committee issued the following statement:

"Labor has always believed in a program of more recreational facilities in the state. In this connection, it is well known that these recreational areas have contributed to the welfare of our youth, in providing their facilities for use by high school and college athletic teams for practice and tournaments.

"TO TAX these courses out of business is to defeat this important youth program.

The committee also noted that many of the golf courses affected by the present taxation system have service and equipment contracts with organizations employing union members. Their closing down because of high tax rates would mean loss of work for these employees.

Farmers Insurance Group Completes Torrance Office

New Torrance offices of Farmers Insurance Group have been completed and are now open at 18536 Hawthorne Blvd., it was announced today by Robert E. Early, first vice president in charge of production.

The two-story garden type building is of contemporary design of cement block, steel and glass construction with an area of approximately 4000 sq. ft. The building is fully air-conditioned and incorporates the most modern office appointments. It features a large pylon with Farmers Insurance Group sign. The exterior is gray and the interior blends tan with yellow tones.

THE STRUCTURE, on company-owned property, is built around a patio with tropical plantings.

Vincent K. Hebson, district manager, and his sales staff are located on the first floor. Hebson became a local agent in the Torrance area in 1950 and a district manager in 1954. The claims office, headed by Harve Bair, and serving the entire Torrance area, occupies the second floor. Bair joined the insurance organization in 1949 as a claims representative in Los Angeles.

HE LATER served in similar positions in the Inglewood and West Los Angeles claims

offices and as a liability examiner in Los Angeles Regional Office claims before his appointment as Torrance branch

OCTOBER 20, 1960

THE TORRANCE HERALD

5

claims manager in 1958. Architect was Harold W. Levitt, A.I.A., and Ernest W. son.

LeDuc, associate architect, at contractor was Harold Ande

DRAPERY SALE

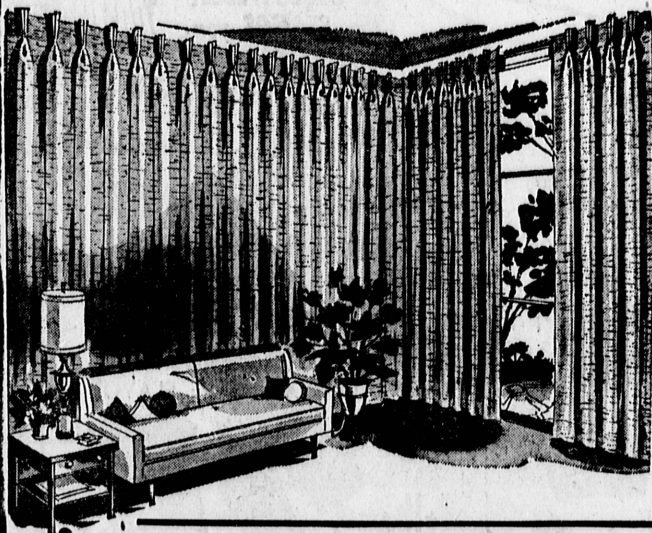
DON'T MISS THIS VALUE!!

SAVE
20% TO 40%

ANY WIDTH — 80" OR LONGER

JUST SOME OF THE FEATURES OF ALL DRAPES MADE IN OUR WORKSHOP

- DOUBLE 4" FRENCH PLEATED HEADING
- PERMANENT CRINOLINE USED
- DOUBLE 4" BOTTOM HEMS
- DOUBLE SIDE HEMS
- WEIGHTED AT SEAMS AND CORNERS
- ALL BLIND STITCHED
- FAN FOLDED & PIN HOOKED
- CUSTOM INSTALLED AND DRESSED AT WINDOW, IF DESIRED
- ALL WORKMANSHIP GUARANTEED



FABRICS from

\$1.89 YD.

INCLUDING CUSTOM LABOR!



Shop at Home!

Just pick up your phone and call any one of our stores and we will gladly send one of our decorators to your home. No obligation of course.

From Torrance area call FR 1-5116 or FA 8-0211
From L. A. area call SP 2-1850
From Norwalk area call UN 3-0061

CHOOSE FROM THOUSANDS OF NEW FADE-PROOF FABRICS...

Offered to you through our carload buying at savings of 20% to 40% including free labor on all drapes 80" or longer regardless of width.

Select the fabric of your choice at our low, low prices and we will make custom draperies for you for the price of the fabric alone.



OPEN SUNDAY
9:00 - 5:00

Open Mon., & Fri.
Nites 'Til 9:00
Open Daily 8:00 to 6:00

WE GUARANTEE
10 DAY DELIVERY

OPEN AN ACCOUNT
TAKE A YEAR TO PAY

ALL DRAPES MADE
IN OUR OWN WORK-
SHOP BY EXPERTS

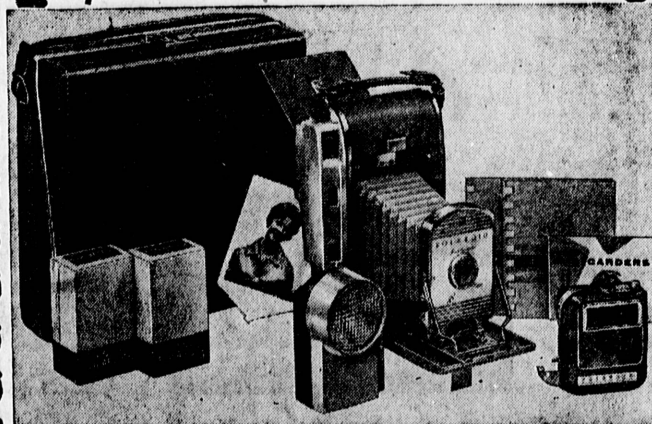
DOWNTOWN TORRANCE
1641 CABRILLO AVE. 20368 HAWTHORNE BLVD.
CORNER OF CARSON AT 5 POINTS
FA. 8-0211 FR 1-5116 - SP 2-1850
STORE ALSO LOCATED AT 11737 FIRESTONE BLVD. IN NORWALK



Polaroid "BONANZA"

A-1 Photo INC.

NOW!



Now — for a limited time just before Christmas you can buy the famous Model 800 Polaroid Land Camera in a complete kit — and get a \$39.95 Electric Eye Shutter free!

Here's what is included in this special offer:

1. Model 800 Polaroid Land Camera
2. The repeating wink-light for pictures without flashbulbs
3. Auxiliary flasher and 4-5 filter
4. Two rolls of 800 speed film
5. A slim-line carrying case
6. Two picture albums and 25 postcards
7. AND FREE — The Model 440 Electric Eye Shutter worth \$39.95

With 800 speed film and the wink-light you

can take pictures indoors day or night without flashbulbs!

With the Electric Eye attachment you can take pictures outdoors automatically! You never have to focus or set exposure; the electric eye does it for you. Just aim and snap — it's as easy as that. And, of course, because this is the Polaroid Land Camera, your picture is ready right on the spot just a moment later! Isn't this the way you want to take pictures? Come in today.

Total Retail Value \$213.83

OUR "BONANZA" PRICE

\$129.90

JUST \$12.99 DOWN

OTHER POLAROID "BONANZA SPECIALS"

POLAROID MODEL 150 OUTFIT
Includes all items listed above in Model 800 Kit except electric shutter. 109.99
REGULAR \$155.43 ONLY \$10.99 DOWN

POLAROID MODEL 150 CAMERA ONLY
New range finder model, 3 element coated lens, take 8 3/4x3 1/4 pictures. 88.88
... accepts all latest attachments. Handsome charcoal leather finish.
REGULAR \$113.50 ONLY \$5.88 DOWN

POLAROID MODEL 110 PATHFINDER DELUXE CAMERA
Polaroid's finest . . . F4.5 lens. Speeds to 300th of a second. All press type features. Pride of advanced amateurs and professionals. 128.88
REGULAR \$172.50 ONLY \$12.88 DOWN

Remember . . .
YOU CAN CHANGE IT AT A-1 PHOTO. WE HANDLE OUR OWN CONTRACTS. NO INTEREST OR CARRYING CHARGES ON 90 DAY ACCOUNTS.

LAYAWAY TODAY

A small deposit will hold any item until Christmas . . . Buy Now and Save.

A-1 Photo INC.

TORRANCE
1318 Sartori Ave.
FA. 8-3154

SOUTH BAY CENTER
174th & Hawthorne Blvd.
Redondo Beach

WALTERIA
Pac. Cst. Hwy. at
Hawthorne
FR. 5-7014

Free Gifts

FOR NEW SAVINGS ACCOUNTS OR ADDITIONS TO PRESENT ACCOUNTS

Hurry! Gifts limited while selection lasts . . .
OPEN YOUR ACCOUNT NOW

Your Savings **EARN MORE** at American Savings

- 4 1/2% Current Annual Interest Paid or Compounded Quarterly
- Savings Insured to \$10,000 by an agency of the U. S. Government
- Funds received or postmarked by the 10th earn from the 1st
- Legal for Corporate or Trust Funds
- Save By Mail—The Quick and Convenient Way

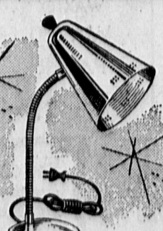
Office Hours: Monday-Thursday 9-4; Friday 9-6



FREE

\$1,000 Account or More—6-Cup DOUGLAS COFFEE MAKER-DECANTER OR 16-Piece INTERNATIONAL STAINLESS TABLEWARE.

OR YOU MAY HAVE BLUE



FREE

\$500 Account or More—DESK LAMP, UL Approved OR G-E ELECTRIC ALARM CLOCK.

MANY MORE GIFTS TO CHOOSE FROM



You Pay Only \$10 for this genuine OSTERIZER when you open an account of \$1,500 or more, or add \$1,500 or more to your present account. (We pay the difference.)



You Pay Only \$5 for this TRANSISTOR RADIO when you open an account of \$1,000 or more, or add \$1,000 or more to your present account. (We pay the difference.) Complete with Battery, Carrying Case, Earphone, Guaranteed.

4 1/2% AMERICAN SAVINGS

CURRENT ANNUAL INTEREST PAID OR COMPOUNDED QUARTERLY

REDONDO BEACH • 205 S. Pacific Ave. • FR 9-5444
HAWTHORNE • 145 N. Hawthorne Blvd. • OS 9-2581 MANHATTAN BEACH • 1130 Manhattan Ave. • FR 9-8451
REDONDO-SOUTH BAY • 1959 Kingsdale Ave. • FR 6-7911 • Opposite South Bay Center

Offices in: AZUSA • HAWTHORNE • LA PUENTE • MANHATTAN BEACH • MONTEROSE • NORWALK • PALMDALE • REDONDO BEACH • REDONDO-SOUTH BAY CENTER • TEMPLE CITY • WHITTIER • EAST WHITTIER