

# Free Glaucoma Clinic Stated Here on Oct. 14

Community-wide glaucoma screening tests will be held Oct. 14 at Torrance Memorial Hospital from 8 a.m. to 8 p.m. under the sponsorship of South Torrance Lions Club.

All residents, especially those over 40 years of age, who have not had recent eye examinations are urged to take the test, which is aimed to screen those with possible signs and symptoms of glaucoma.

"Glaucoma can be checked if detected and treated in the early stages," said Jim Mechura, president of the club.

"But because loss of vision is usually very gradual and there is no pain in the early stages, a person may not know glaucoma is occurring until considerable vision is lost. The amount of sight that has been lost from glaucoma cannot be restored, but treatment can prevent further loss."

The eye screening project will be conducted by volunteers of Torrance Memorial Hospital Women's Auxiliary, under the professional of ophthalmologists, medical doctors specializing in eye diseases. Persons found to have eye

signs or symptoms will be referred to eye doctors for further examinations.

Chairman of the community project is Floyd F. Lee, Chairman of the professional advisory committee is Dr. Earl Lewis.

Glaucoma detection is only one of the many preventive services of the National Society for the Prevention of Blindness, national voluntary agency.

CLASSIFIED ADS  
FA 8-4000

## Square Links Plan Pre-Halloween Dance

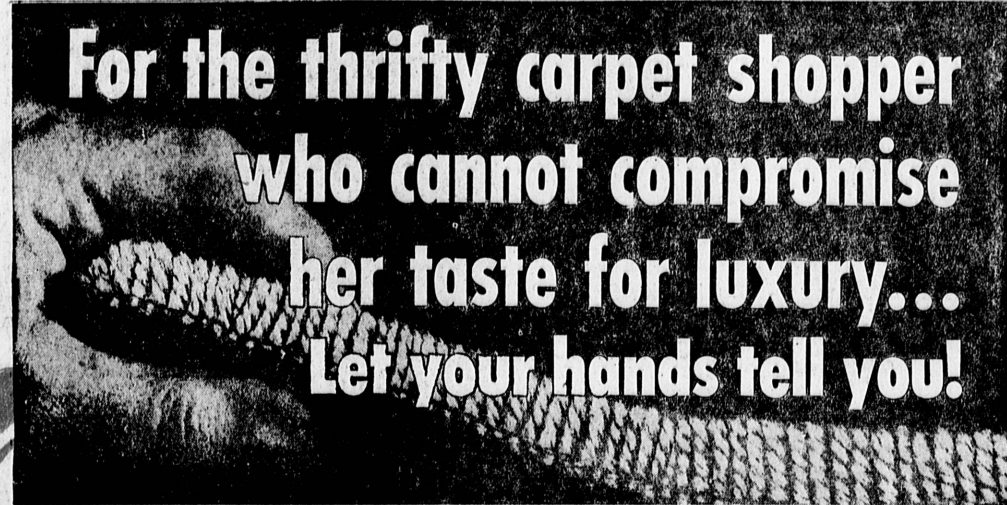
A dance billed as a "Pre-Halloween" affair will be held at the American Legion Hall, 1109 Border Ave., Sunday evening under the sponsorship of the Square Links. All Majors will call the dances from 6:30 to 9:30 p.m. A potluck dinner is scheduled at 5:30 p.m.

## Fashion Rug & Upholstering Cleaners

Laying • Sewing • Cutting • Binding  
Remodeling • Repairing of Cigarette Burns

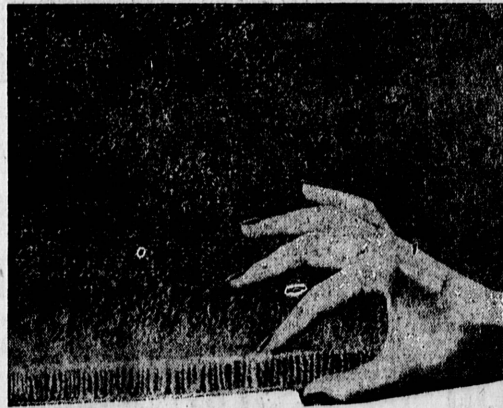
WE SPECIALIZE IN WALL TO WALL CARPETING AND FURNITURE CLEANING  
—ASK ABOUT OUR CHURCH PLAN—

1641 Border Ave, Torrance FAirfax 8-9011



For the thrifty carpet shopper who cannot compromise her taste for luxury... Let your hands tell you!

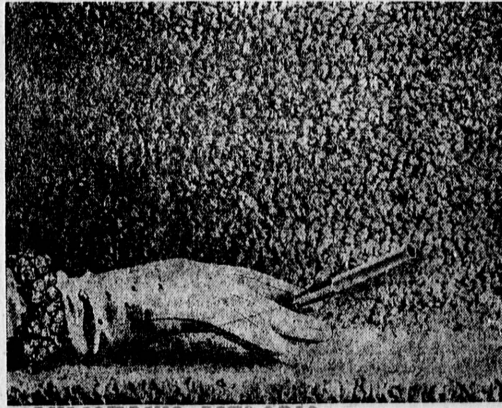
CARPET TOWN presents four deep, plush broadlooms—some of them actually with 3/4 inch thickness of luxuriant all wool pile. Caress them—or think of sinking your bare feet into their deep plush. You'll love them through all the years of their long wear. See them today at Carpet Town or call to see samples in your home.



CONTINUOUS FILAMENT  
100% NYLON

- Tweeds or Solids
- will not pill, fuzz, or shed
- cleans easily with proper detergents
- keeps its luxurious texture after years of rugged wear and heavy traffic
- won't support combustion
- quickly eliminates furniture marks
- gives unexcelled wearability

COMPLETELY INSTALLED OVER FOAM RUBBER PADDING



GULISTAN'S MELODIC

\$10.88 sq. yd.

Heavy, plush all wool looped pile sold at most stores as high as \$13.95. In 15-foot width. Available in one color—a gorgeous light beige. See it at Carpet Town or in your home.

\$8.88 sq. yd.

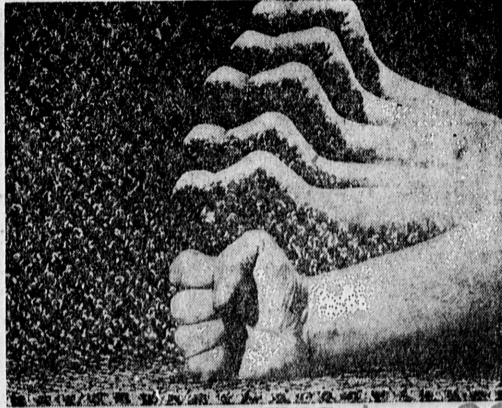
COMPLETELY INSTALLED OVER FOAM RUBBER PADDING



100% DuPONT NYLON

- CHOICE OF TWEEDS OR SOLIDS
- Ideal for the budget minded and value conscious family. A long-wearing carpeting because it's all nylon pile. It's stain-resistant and it also resists moths, insects, etc.

COMPLETELY INSTALLED OVER FOAM RUBBER PADDING



ALL WOOL HI-LO TEXTURE

An unusual value now in your choice of many tweed and solid colors at this extra-special price. Thick and long wearing.

\$6.88 sq. yd.

COMPLETELY INSTALLED OVER FOAM RUBBER PADDING

★ No Money Down ★ 3 Years to Pay ★ Bank Terms ★ Free Estimates, Cheerfully

Across from Sears and the Broadway Del Amo Center Annex—In Torrance

# Carpet Town 3822 Sepulveda Blvd.

Corner of Hawthorne Blvd.—Torrance

Open Weekdays 'til 9—Sundays 11-5  
Saturdays 9-5  
Call FR. 5-0518 for information

9x12 Ft. Wool Rug Riot! ★ Matching 4x6 Hand Hooked Rugs.....Only \$13.00 ea.

## HAND HOOKED RUGS \$49.00 ea.

- TRADITIONAL DESIGN
- RUBBERIZED NON-SKID BACKING
- Choice of Beige • Rose • Green



We'll bring a carpet store to your door!

Call For Our Carpet Wagon Service—Day or Evening  
FR. 5-0518

# My 1st Anniversary SALE

I survived!! Thank you

Bob

I OFFER MY MOST GENEROUS PRICES  
NO DOWN PAYMENT—3 YEARS TO PAY  
FREE DELIVERY

Maple Rolling Pin Letter Holder 98¢

1/2 Price

3.95 Captains Chair Cushions Corduroy-Foam Save 1/3 2.60

Windsor Side Chairs Birch-Salem Finish \$18

\$3.95 Milk Stools Heavy Stock

Special 2.20

Accordion Hat Rack Maple \$2

Pictures other than oils 40% off

## Dining Room Groups

NO DOWN PAYMENT Just Pay

104.50 Pedestal Table 42" Rd. Ext. Heat Resistant Plastic Top \$77 2.88 Month

129.50 Frontier-Distressed 48" Rd. \$79 2.96 Month

145.20 5 Pc. Hale of Vermont Maple 32-48-60 Ext. Table, 4 Chairs \$109 4.08 Month

168.20 5 Pc. Hale of Vermont Maple 42" Rd. Ext. Table, 4 Chairs \$126 4.69 Month

198.00 Cambridge Drop Leaf Table 48x24 Extends to 109", 3 Fills \$129 4.84 Month

244.50 Hutch by Harbor—Salem \$163 6.07 Month

292.50 Hutch by Kent County—Salem \$199 7.47 Month

Authentic Wilbur Clark's Desert Inn

COFFEE CRAP TABLE

1/2 scale size

For Entertaining — For Family Fun

Coffee Table Size 3'x6'x16" high

Crap Table Size 3'x6'x38" high

Anniversary Sale Price \$329

Early American Table Lamps

32.50 ..... now \$15

37.50 ..... now \$26

Wall Pieces 40% off

2 piece Bed Divan and Rocker

Special \$139

Club Chair and Ottoman

in Plyhide Loose Pillow Back Foam Seat Cushion

Very Special at \$127.50

39.95 Swivel Bar Stool \$28

91.50 6 ft. Shutter Screen 4-12" Panels Salem Sale Price \$64

## Living Room Pieces

Save up to 1/2

NO DOWN PAYMENT Just Pay

39.50 Platform Rocker Wood Arms and Wings \$29 1.08 Month

59.50 Swivel Platform Rocker Wood Arms and Wings \$39 1.45 Month

79.50 Swivel Platform Rocker Rubber Base and Back \$47 1.73 Month

214.50 Custom Club Chair Hand Tufted, Hand Tied Springs \$107 4.01 Month

214.50 Mayflower Chair, Wing Back Hand Tufted, Hand Tied Springs \$107 4.01 Month

264.50 Cuddle Up Chair, Foam Hand Tied Springs \$134 5.02 Month

299.50 Love Seat, Hand Tufted 8-way Hand Tied Springs \$119 4.43 Month

389.50 Custom Sofa, Hand Tufted Foam Cushions, Hand Tied Springs \$199 7.47 Month

379.50 Tuckaway Bed Sofa, Foam Wing Back \$199 7.47 Month

429.50 3 Piece Curved Sectional Foam Cushions \$288 10.58 Month

## 6.95 Sq. Yd. All Wool Carpeting

Textured Tweed or Plain Colors Anniversary Price \$20 Sq. Yd.

10.95 Sq. Yd. Heavy All Wool Quality Broadloom \$80 Sq. Yd.

100% Nylon Fluff Plush Carpeting

Pastel Colors—Washable No Fade—No Shrinkage For Bath and Bed Rooms Reg. 10.95 Sq. Yd. Anniversary Price \$80 Sq. Yd.

Custom Made—Hand Loomed Genuine EARLY CALIFORNIAN Broadloom \$100 Sq. Yd.

Custom Drapes for this event 30% off

## Bedroom Groups

Early American - Provincial 5 Piece Group includes: Dresser, framed Mirror, 2 Nite Stands, Bed or Bookcase Headboard NO DOWN PAYMENT Just Pay

254.50 5 Pc. Maple Group 60" Triple Dresser \$169 6.34 Month

284.50 5 Pc. Birch Group Shutter Type \$199 7.47 Month

294.00 5 Pc. Cherry Group 60" Dresser—Panel Bed \$209 7.84 Month

392.50 5 Pc. Cherry Group High Poster Bed \$295 10.83 Month

464.50 5 Pc. Birch Group Spindle Bed—10 Dr. Dresser \$349 12.84 Month

649.50 5 Pc. Birch, Cannonball Bed The Hartford Group \$449 16.52 Month

659.50 5 Pc. Birch, Provincial 11 Dr. Dresser—Panel Bed \$459 16.89 Month

260.00 Chest on Chest, Birch \$160 5.99 Month

123.50 High Poster Bed, Cambridge \$74 2.77 Month

133.50 Bunk Bed, Complete w/Englander Bunkettes \$89 3.34 Month

64.00 Desk/Chest \$44 2.39 Month

99.00 4 Dr. Chest Birch, Shutter Type \$67 2.53 Month

69.00 Low Poster Bed, Maple \$46 1.52 Month

Mattress and Spring Sets SAVE 1/2

119.50 312 Coil Med. Firm 10 yr. Guarantee—Twin or Full \$59.75 2.23 Month

149.50 King High—Smooth Top 15 yr. Guar. Full or Twin \$74.75 2.79 Month

159.50 837 Coil Firm 20 yr. Guar. \$79.75 2.98 Month

## Bob's Maple Shop

4151 REDONDO BLVD., LAWDALE

2 Blocks East of South Bay Center

of course—Free Delivery

Store Hours:  
nine to nine  
Sat. and Sun.  
ten to six