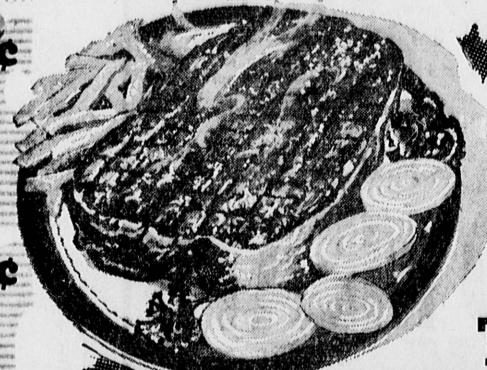


and save money at Boys gigantic

# WEDNESDAY SALE

exciting savings and Blue Chip Stamps too!



## STEAK SALE!

U.S.D.A. GRADED CHOICE THICK CUT

SWISS

**69** c lb.

T-BONE TENDER, JUICY \$1.05 lb.

SIRLOIN TIP BONELESS 95c lb.

PORTERHOUSE A MAN-SIZE STEAK \$1.15 lb.

TOP SIRLOIN BONELESS, LEAN \$1.29 lb.

FILLET MIGNON The King of Steaks \$1.89 lb.

SPENCER STEAK \$1.69 lb.

RIB CLUB TRIMMED RIGHT 85c lb.

CUBE TENDER JUICY 89c lb.

TENDER BONELESS 98c lb.

GROUND BEEF 39c lb.

STANDING RIB ROAST 79c lb.

OCEAN SPRAY CRANBERRY SAUCE The Natural Mate For Every Meat 16-oz. Can 25c

TURKEYS FRESH FROZEN OVEN READY YOUNG TOMS 39c lb.

CORNER BEEF KOSHER STYLE TOP QUALITY CHOICE LEAN Boneless Brisket 69c lb.

KING CRAB MEAT Fresh Frozen 5-oz. Plastic Cup 43c ea.

HALIBUT Fresh Frozen Northern Sliced 55c lb.

WHITING FISH Pan Ready 29c lb.

TOP QUALITY LUER SLICED BACON 43c lb.

fruits & vegetables

## APPLES

• Extra Fancy  
• Washington Starking  
• DELICIOUS

2 LBS 29c

## CARROTS

• Fresh Picked  
• Young  
• Tender

1-Lb. Cello Pkg. 6c

## AVOCADOS

• FANCY  
• EXTRA LARGE  
• FUERTE

2 FOR 15c

FRESH, CRISP UTAH TYPE  
**CELERY**  
5c lb.

FANCY, LARGE, DESERT SWEET ARIZONA  
**Grapefruit**  
8 LB. CELLO BAG 29c

ISLAND SUN PINEAPPLE

1/2 & 1/4 SLICES 20 OZ. CAN

**25c**

OLD TAVERN PRESERVES

Ass't 20 OZ. JARS

**31c**

GINGER ALE VERNORS

FULL QUART REG. 30c

**19c**

YELLOW BOW PEACHES

FREE-STONE NO. 2 1/2 CAN

**25c**

junior dept. store

Full Contour Rubber AUTO RUG covers front of car floor, remains firmly in place. Indiv. Boxed Ass't. Colors 4.98 Value **3.49**

PLASTIC CLOTHES

PIN BAG

HEAVY QUALITY ASSORTED COLORS **29c**

HALF GALLON PLASTIC CONTAINERS

IDEAL FOR STORING FOODS **3 FOR \$1**

BOYS' LEATHER BELTS

1/2, 3/4 & 1 INCH WIDE INDIVIDUALLY BOXED SIZES 22-30 **59c**

TERRY BATH TOWELS

ASSORTED STRIPE COLOR! 22 x 44 INCHES NO 1 SECONDS **49c**

Extra-Special Buy for Baby! **BABY BLANKETS** REGULAR \$1.00 VALUE! **49c** EA. 30" x 40" SATIN-BOUND COLORS: WHITE, GREEN, MAIZE, PINK, & BLUE

Specials for Thurs., Fri., Sat. and Sun. March 17, 18, 19, 20

OPEN DAILY 9 A.M. 'TIL MIDNIGHT We Reserve the Right to Limit Quantities

1000 FRONT AVE.

• 118th & HAWTHORNE BLVD.