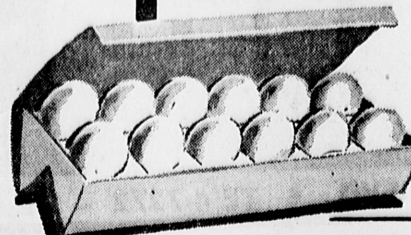


**RS 15**  
 because fresh-  
 d, fresh-packed  
 Delicious!  
**POUND BOX**

Old Tavern Pure Fruit  
**PRESERVES**  
 • STRAWBERRY  
 • RED RASPBERRY  
 • PEACH-PINEAPPLE  
 • BLACK RASPBERRY  
 Your Choice **3** LARGE 20-OZ. JARS **\$1**

**EGGS 37**  
 Countryside  
**LARGE**  
 GRADE  
**"AA"**  
 Guaranteed Fresh  
 Per Doz.



# WELCOME Self-Abraction!

Roll up the red carpet and **ROLLING BACK PRICES** to welcome our newest...

**5**  
 CANS

**Specials!**  
**12 ROLLS \$1**  
 (3 4-roll pkgs.)  
**5 NO. 300 CANS \$1**  
**3 8-OZ. PKGS. \$1**  
**5 29-OZ. CANS \$1**  
**4 NO. 2 CANS \$1**  
**5 20-OZ. BOTTLES \$1**  
**7 NO. 303 CANS \$1**  
**6 PICNIC CANS \$1**

**Golden Creme 21c**  
 PINT CUP  
**SALAD SHRIMP 37c**  
 BLUE JACKET  
 4 1/2-OZ. CAN

**MIXED NUTS 79c**  
 CIRCUS  
 13-OZ. TIN

**BEECH-NUT BABY FOOD**  
 Strained Varieties  
 3 4-OZ. JARS 35c

**BANQUET DINNERS**  
 Frozen Chicken or Turkey  
 11-OZ. TRAY 65c

**LUX TOILET SOAP**  
 2 BATH BARS 33c 3 REG. BARS 35c

**LUX FLAKES**  
 For your dainty things  
 LARGE BOX 37c

**BREEZE DETERGENT**  
 Cannon Kitchen Towel in Package!  
 GIANT BOX 87c

**FLUFFY "ALL"**  
 For Automatics and heavy duty  
 3-LB. BOX 81c

**NORTHERN TOILET TISSUE**  
 "Softness is Northern"  
 3 ROLL PAK 29c

## LAMB SALE



Genuine 1959 tender, young, lean **SPRING LAMB!**

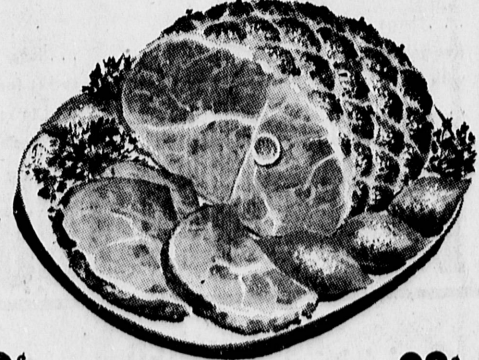
**Leg o' Lamb 59c lb.**

**LAMB CHOPS**  
**Large Loin 79c lb.**  
**Small Loin 98c lb.**  
**Rib Chops 89c lb.**  
**Shoulder Cut 59c lb.**

**Square Cut Lamb Shoulder ROAST 35c Lb.**  
 Savory family pleaser!  
 Tender, well-trimmed.  
 Guaranteed to satisfy!

**FARMER JOHN SMOKED**

**HAM 39c LB.**  
 Lean, tender Eastern pork smoked to a delicate pink for Western flavor!



**HAM BUTT PART 49c lb**  
 Rath Black Hawk SLICED BACON First Quality 55c lb

**CENTER HAM SLICES 98c lb**  
 Fresh Deep Sea FILLET OF HALIBUT 49c lb

**LIBBY'S MEAT PIES**  
 Chicken, Beef, Turkey  
 Fresh frozen  
**4 8-oz. Pies 99c**

**CHUN KING Cantonese FOODS**  
 • Beef Chop Suey  
 • Chicken Chow Mein  
**2 1/2-Lb. Can 99c Each**

**HUNT'S PORK & BEANS**  
 In Hunt's own savory sauce!  
**4 No. 2 1/2 Cans 89c**

**VOL. 2 NOW ON SALE!** Presents the **BRAND-NEW Set of One of the World's Finest Encyclopedias!**

**BRAND NEW-NEW Pictures-NEW Articles**  
**FUNK & WAGNALLS**  
 Standard Reference  
**ENCYCLOPEDIA**  
 On Our Easy On-the-Pocketbook Plan

Own This Wonderful Encyclopedia at an Amazing Bargain!

First in Glass Jars! **HEINZ JUNIOR BABY FOODS 3 6 1/2-OZ. JARS 47c**

**Grand Opening!**  
**UP-TO-THE-MINUTE SUPER MARKET**  
 Southern California's fastest-growing family of complete food stores adds another beautiful, modern market at 6121 West Pico Boulevard! All of our stores celebrate with 4 big days of super values!

**LIBBY'S FROZEN VEGETABLES**

- SPINACH
- BROCCOLI (CHOPPED STYLE)
- SWEET PEAS
- BUTTER BEANS
- CUT CORN
- FRENCH FRIES

**REGULAR PACKAGE Mix-or-Match! 6 for 99c**

**BOND'S KOSHER OR POLISH 20-OZ. JAR 29c**  
**Dill Spears**  
 SLICES OR HALVES  
**Hunt's Peaches 3 No. 2 1/2 CANS 79c**  
 S & W RED  
**Kidney Beans 2 No. 303 CANS 29c**  
 OATMEAL, DUTCH CRISP, SUGAR MIST  
**Patti-Cake 3 REG. PKGS. 79c**

Watch For the **VALUES** Featured on  
**CHANNEL 9 MOVIE THEATRE**  
 • NOW PLAYING—Cry of the City  
 • STARTS MONDAY—The Rains Came

Oscar Mayer **BOLOGNA Yellow Band 13-oz. Pkg. 59c**  
 M.J.B. **COFFEE "Shake the can" 1-lb. Can 79c**  
 Comet **CLEANSER Green! It bleaches! 2 14-oz. Cans 33c**

Nightly at 9 on Channel 9



**TORRANCE** 182nd and Arlington  
**GARDENA** Van Ness and Rosecrans  
**TORRANCE** 1321 Post Ave.

Limit Rights Reserved