



CENTER OF DISPUTE... Pictured above is an architect's sketch of an office building of the Mahon Co., now under construction, center of a dispute between residents of Monterey St. and owners of a nearby industrial site. Torrance City Council has arranged mediation of the issue during the next two weeks between residents and Mahon Co. representatives.

Council has okayed width of the buffer strip doubled to 100 feet after residents feared that a metal processing plant to be built by Mahon would cause a nuisance.

### School Critics Having Field Day With New Survey on Pay Scales

By VINCENT THOMAS  
Assemblyman, 68th District

Critics of our California public school system, as well as citizens who are merely statistically curious, are being treated to another factual field-day by recent revelations as to the cost of high-level administration of school districts. The Senate Interim Committee on Governmental Administration has released some interesting figures which are already being widely discussed, and about which the controversy is certain to get hotter.

The Committee issued a list of 107 school districts in all parts of the state who are paying salaries to their superintendents of \$15,000 or more annually, 23 of them paying more than \$20,000. The list ranged from a small junior college district with a total enrollment last year of 68, to our largest metropolitan district with an enrollment of close to half a million.

AN EXAMINATION of the published facts indicates that the cost per student of superintendents' salaries in the districts named ranged from a low of 6.9 cents annually to a high of \$227.94. While use of this basis for judging salaries is debatable, it is indicative of the extreme variation between them. Salaries bear no apparent relationship to size of district enrollment, or to the type of district, elementary, high, junior college or unified. One district with 1500 students is reported to have paid as large a salary to its chief as another with 60,000 enrollment.

While the number of districts involved is only about 6 per cent of the total number in the state, it has been indicated that the Committee will study the situation to determine whether school districts are actually "squandering the education dollar on everything but classroom instruction." It is recognized, it was said, that there is a necessary place for supervision in the school district, but the cost of this supervision must be kept in a reasonable relationship to the number of teachers (which is fixed

by the number of students) or else there would be nothing left to employ the people who must do the classroom work. Possibility of some state controls will be explored.

IT HAS ALSO been emphasized that school district budgets are made locally, within the districts, and that administrative salaries are fixed in the same manner. The possibility that competition between districts for experienced personnel has created an unbalanced salary situation has been mentioned.

All school districts receive substantial financial support from state funds, based on "average daily attendance" of students. A basic allowance of \$125 per year per unit of such "ADA" goes to every district. An additional allowance up to as high as \$400 per ADA is made to needy school districts, those whose tax base does not produce enough revenue for the minimum educational program. A substantial number of districts paying the high salaries are receiving allocations above the basic amount.

"IMPOVERISHED" school districts, those bonded to a specified limit, can qualify for state loans to build classrooms, only about half of which must be repaid. Forty-eight districts paying high salaries to their superintendents have qualified for such loans.

Whatever the outcome of the legislative investigation, it looks as though the topic of school administrative salaries will be under close scrutiny for some time to come.

**ARV'S RADIATOR SHOP**  
18104 Prairie Ave., Torrance  
FR 4-0430

### Perry

"Under the Big Top with Perry" was the theme of the recent Perry PTA program planning committee.

Attending the program planning meeting were Mrs. Glen Thomas, chairman; Mr. Robert Allen, principal; Mrs. L. Swegles, Mrs. Jerome Lemberger, Mrs. S. Tolozcko, Mrs. Wm. Boell and Mrs. Wm. Van Meter.

At a meeting of the Ways and Means Committee at the home of President Mrs. Ed Murawski, Mmes. Frank Stein, Kenneth Judd, S. Tolozcko, Richard Greenwald and James Reynolds made plans to hold a hot lunch at the Summer Session on July 28. They also planned such projects as a "Welcome Tea," a paper drive for late September, and a Carnival in October.

Coffee and rolls were served at a farewell coffee hour on July 23, honoring Mr. John Strom, Principal of Perry School, who has been transferred to another school. Hostess was Mrs. Richard Greenwald, with board members and Mr. Robert Allen, new principal, attending.

Horses get nowhere until harnessed. Steam and gas get nowhere until confined. Niagara is turned into light and power when tunneled. Life grows great when it is focused, dedicated to a great principle, and disciplined in action.

Harry Emerson Fosdick

Donald F. Regener, fire control technician seaman, USN, son of Mr. and Mrs. Francis F. Regener, 1610 W. 226th St., Harbor City, departed from San Diego Aug. 31 aboard the destroyer USS Marshall for a five-month tour of duty with the U.S. Seventh Fleet in the Western Pacific.

A unit of Destroyer Squadron 17, the Marshall is scheduled to visit Hawaii, Japan, Hong Kong and the Philippines.

**AND LAUNDRY**  
**ONE HOUR SERVICE**  
We're quick when time is short!  
One Hour on Dry Cleaning  
Two Hours on Laundry  
**Ricardo CLEANERS LAUNDRETS**  
24232 Hawthorne Blvd.  
Walteria-Torrance, FR 5-8001  
Just South of Pac. Cst. Hwy.

### Blessed Relief from Biting Insects!

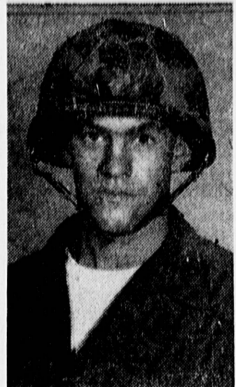
**NEW SPRAY Kills and Repels Fleas, Lice, Ticks, Gnats, Mosquitoes, Flies.**

**Hilo DOG SPRAY**  
Now, at the press of a button your dog can know the joy of living without scratching. Hilo Dog Spray kills and repels tormenting pests, stops itching, and relieves summer eczema. 6 oz. can, \$1.29 at pet counters or write: The Hilo Co., Norwalk, Conn.

**The Billy Dare Trio**  
Featuring **CHRISTINE CALLAS**  
Now Entertaining Nightly in **THE FUN ROOM**  
Monday Thru Saturday 9 p.m. to 1:30 a.m.  
**DANCING NIGHTLY**

**40 LANES** Open Bowling day & nite  
COFFEE SHOP OPEN 24 HOURS  
**BOWL-O-DROME**  
COOLED BY ELECTRIC REFRIGERATION  
WESTERN AT 220th. FA 8-3700, SP 5-1326

**GO GREYHOUND**  
LEAVE THE DRIVING TO US  
EL PASO, TEX. \$24.55  
BIRMINGHAM, ALA. \$52.95  
One-Way Fare, Plus Tax  
FA. 8-3642 1627 CABRILLO



MARINE TRAINED... Marine Pvt. Roy W. Clites, son of Mr. and Mrs. Curtis Clites, 18420 Ashley Ave., finished four weeks of individual combat training Aug. 14 at the Marine Corps Base at Camp Pendleton.

**FIAT - GMC TRUCKS CADILLAC - OLDSMOBILE**  
AUTHORIZED DEALER  
SALES AND SERVICE  
**Cecil L. Thomas & Sons**  
Terminal 3-5291 PACIFIC at FOURTH San Pedro

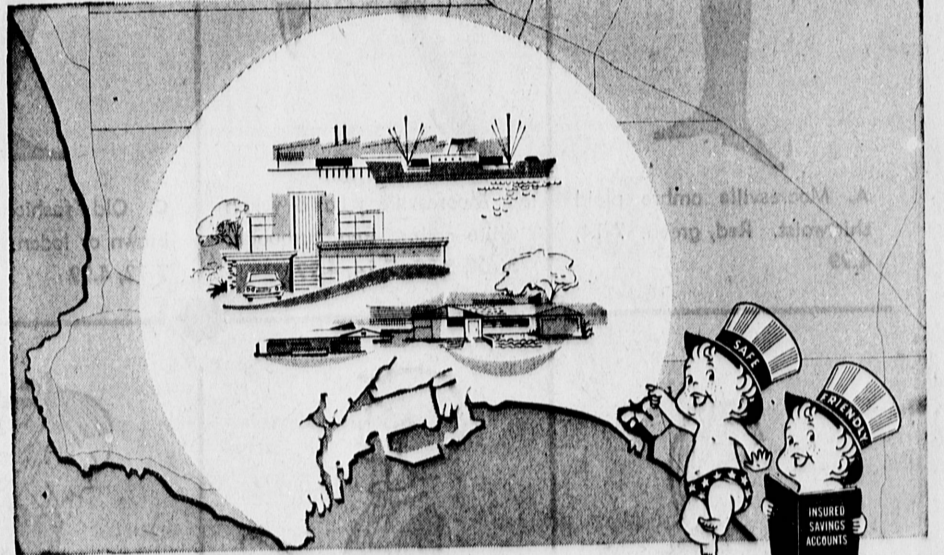
**BRAKES RELINED**  
All Cars and Pickups to 1/2 Ton \$950  
• Best Grade  
• Bonded Lining  
• 25,000-Mile Guarantee  
• Fully Equipped Shop  
• Factory Trained Mechanics  
• Free Loan Cars  
Automatic Transmission and Power Steering SPECIALISTS  
**ANCHOR GARAGE**  
Open 'Til 7 P.M.  
Daily Including Sunday  
1312 W. Anaheim  
Near Figueroa  
Wilmington  
Terminal 4-8245

We're Now **Open Mon. & Fri. Till 9 P.M.**  
For Your Shopping Convenience  
**McMahan's Furniture Stores**  
Sartori at El Prado Downtown Torrance

**MEN'S Better SHOES**  
SELECT FROM THESE FAMOUS BRANDS:  
• BOSTONIANS • WRIGHT Arch Preserver  
• WEYENBERG • MASSAGIC  
QUALITY SHOE REPAIRING  
**FENWICKS SHOE STORE**  
1420 Marcelina FAirfax 8-6487  
across from Post Office in Downtown Torrance

**RONN'S LIQUOR AND DELICATESSEN**  
Free Delivery—Phone FR 5-9561  
**SPECIAL KEG BEER 9.95** and up Plus Tax and Deposit  
22216 PALOS VERDES BLVD., TORRANCE  
In the Southwood Shopping Center  
EASTSIDE TAP BEER • 7 1/2-GALLON KEG • WE SUPPLY PUMPS FREE

**YOUR SAVINGS BUILD YOUR FUTURE AND YOUR COMMUNITY**  
...when you save at Glendale Federal Savings



Your savings dollars help build homes and industry... In the Harbor-Peninsula area  
Glendale Federal was founded to encourage thrift and home ownership in Southern California. And one strict Glendale Federal policy is to use the savings of a community to help build that same community. So you can be sure that when you open a Glendale Federal Savings account, you're not only investing in your own future security... you're supplying the funds to help your home town grow.  
Because your Glendale Federal Savings account earns more—4% a year paid every three months—your savings grow faster... your future grows brighter. And, because you save at Glendale Federal, your community grows better!

ASSETS OVER \$275,000,000  
**GLENDALE FEDERAL SAVINGS**  
AND LOAN ASSOCIATION  
Formerly-First Federal Savings of San Pedro  
SAN PEDRO OFFICE: 606 West Ninth Street  
LOMITA OFFICE: 2233 Lomita Boulevard  
"LOVE THAT 4%"  
4 1/2% current rate per year  
Paid 4 times a year  
Each account insured to \$10,000.00  
OFFICES IN • GLENDALE • STUDIO CITY • PACIFIC PALISADES • ARCADIA • MONTROSE • WESTWOOD VILLAGE