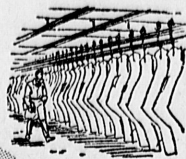
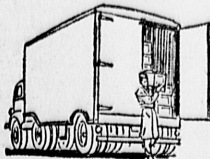


SAFEWAY Meats Are Guaranteed Better!



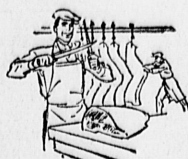
TENDER AGING

Only at Safeway do you get USDA Choice beef plus our controlled aging to assure you beef that is tender, flavorful and at peak of good eating perfection!



DELIVERED DAILY

Safeway's proper storing and delivery of its USDA Choice beef is another guarantee of the finest meat available... proper temperatures protect protein and vitamins for you.



SUPERIOR TRIM

Safeway removes all excess fat and waste in preparing meat for you. It's this Superior Trim that gives you more for your money... better eating meat for less!



FINEST QUALITY

USDA Choice is the only grade of beef sold at your Safeway... valvet-textured, lean, well-marbled, tender meat that comes from well-fed Steer Beef. Safeway Guarantees It!

ROUND STEAKS **75^c** lb.

Full flavored, juicy steaks cut from fully aged USDA Choice Beef. Excellent to pan fry or swiss Full Center Cuts (Bone In)

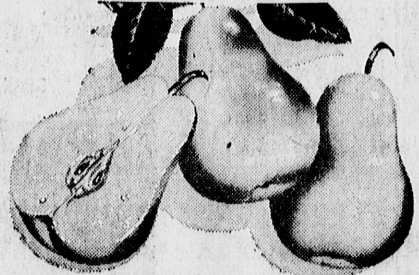
- Round Roast** Boneless Round or Boneless Rump lb. **98^c**
- Beef Rib Steaks** or Roasts Standing 7" Cut First 5 Ribs, USDA Choice lb. **89^c**
- Boneless Top Round** USDA Choice lb. **98^c**
- Rump Roast** Bone-in Cut Aged to Perfection and Trimmed lb. **75^c**
- Cube Steaks** U. S. Choice Beef Very flavorful. Pan-broil or jiffy "minute" steak lb. **98^c**
- Sirloin Tip Steaks** or Roast lb. **98^c**
- Farmer John Bacon** Quality Sliced lb. **59^c**
- Sterling Wieners** No Gristle 1-lb. pkg. **49^c**
- Chunk Bologna** Old Fashioned flavor lb. **49^c**
- Boiled Ham** Rose Brand Sliced 8-oz. pkg. **49^c**
- Rath's Dainties** Smoked Boneless Butt lb. **69^c**
- Beef Patties** Hickory House 2 7/2-oz. pkgs. **39^c**
- Breaded Shrimp** Captain Choice 10-oz. pkg. **69^c**

- Cream O' the Crop Grade AA Eggs**
- Yes... they're definitely fresh.
- From farm to you... try Cream O' the Crop fresh eggs
- Medium Large**
- 1-do. ctn. **39^c** 1-do. ctn. **47^c**

STILL TIME TO WIN at Safeway's "Cross Out"
GET FREE CROSS OUT CARDS
MORE THAN 5500 WINNERS TO DATE
HERE IS GAME NUMBER ELEVEN

1	3	7	9	13	17
19	27	29	31	33	39
41	49	53	55	57	59
61	63	67	69	73	77
81	87	89	95	97	99

Safeway Produce—Always Fresh!



Bartlett Pears

Juicy - Mellow Mountain Grown

lb. **10^c**

Yellow Onions

Add Zip and Nip to Meals

4 lbs. **19^c**

Mushrooms

Safeway Steak and Mushrooms... go great together!

5-oz. cup **25^c**

Russet Potatoes

Good Bakers—Fine Flavor U. S. No. 1's

10 -lb. cello bag **49^c**

FROZEN FOODS

- Waffles** Bel-air Quality Ready in a jiffy! 5-oz. pkg. **10^c**
- Broccoli** Bel-air Quality Chopped 2 10-oz. pkgs. **29^c**
- Brussel Sprouts** Bel-air Quality Firm and Tender 4 8-oz. pkgs. **\$1⁰⁰**
- Grapefruit Juice** Bel-air Quality Tasty-Tangy 6-oz. can **19^c**

FOLGER'S COFFEE

- Vacuum Pack All Grinds 1-lb. can **59^c**
- 2-lb. can **\$1.17**
- Edwards Coffee** Regular, Drip or Fine 2-lb. can **\$1.13** 1-lb. can **57^c**
- Airway Coffee** Mild Brazilian 2-lb. bag **\$1.01** 1-lb. bag **51^c**
- Nob Hill Coffee** Aromatic Blend 2-lb. bag **\$1.05** 1-lb. bag **53^c**
- Arrowroot Biscuits** Baked by Nabisco 5 1/2-oz. pkg. **25^c**
- Scotkins Napkins** Luncheon Size pkg. of 50 **17^c**
- Scotties Facial Tissues** pkg. of 400 **29^c**

Safeway Helps Trim Your Food Costs Everyday!

- Snowdrift** Pure Vegetable Shortening 3-lb. can **59^c**
- Heinz Ketchup** 14-oz. bottle **19^c**
- Niblets Corn** Vacuum Pack 6 12-oz. cans **\$1⁰⁰**
- Biscuits** Mrs. Wright's Buttermilk or Sweet 3 8-oz. pkgs. **25^c**
- Pickles** Zippy Dill or Kosher Dill 22-oz. jar **33^c**

-- Roxbury --

Mint Festival

- Creme de Menthe** 10-oz. pkg. **29^c**
- Party Mints** 8-oz. pkg. **29^c**
- Swedish Mints** 10-oz. pkg. **29^c**
- After Dinner Mints** 9-oz. pkg. **29^c**



Cannon Towels
• Bath Size
• Heavy weight
• 1st Quality
ea. **69^c**

An Excellent Value

Bakery Features

- Curtsy All Butter Pound Cake** Baked in our immaculate bakery. 12-oz. size **39^c**
- Coffee Cake** Curtsy-Lemon Coconut pkg. **29^c**
- Protein Bread** Skylark Baked 15-oz. loaf **25^c**
- Lucerne Ice Milk** Neopolitan, Strawberry, Chocolate or Vanilla 1/2-gal. ctn. **49^c**
- Dessert Idea—Pound Cake, Ice Milk Topping

PRICES EFFECTIVE Thurs., thru Sun., Aug. 13, 14, 15, 16



Applicable taxes collected. Subject to stock on hand. We reserve the right to limit and not sell to other merchants.

CARSON AT WESTERN — TORRANCE