

Yuletide Noted by Gamma Psi

At the Tuesday night educational meeting of the Gamma Psi Chapter of Sigma Alpha Alpha International, held at the home of Mrs. Robert Kennerly, 10911 Yukon, Torrance, the topic "The Mind" was presented by Mrs. Wilton LaBlanc and Mrs. Glen Foster. Following the study, the members worked on trays for the Children's Ward at the Harbor General Hospital. Mrs. Glen Foster and Mrs. Richard Beck chose Santa's sleigh for the trays. They also delivered them to the hospital.

The Chapter's Christmas party will be held Dec. 16 at the home of Mrs. Richard Beck. "Secret pals" for this last year will be revealed and names for the coming year will be drawn. Mrs. Charles Groulx, presiding chairman, Mrs. N. N. Meyer, Mrs. Leon Short, Mrs. Dean Neidhardt, Mrs. Phillip Wade are making plans for the party.

The girls in the Chapter will be busy during the holidays cooking for their adopted family. At a Christmas gift they will deliver a complete dinner to them.

The next business meeting will be held Jan. 13 at the home of Mrs. Richard Beck.

Camp Fire Girls Plan Caroling

The Blue Bird program for seven to ten year old girls added a new group to their rolls this month with the formation of the "Bluest Blue Birds" of Walteria. Sponsored by the Walteria Business Women's Club, the group has Mrs. Wase Moton as their representative, and Mrs. Glen Craig, and Mrs. Gordon Henryson as group and assistant group leaders.

The new group which meets every Saturday is presently making "issue-type" dolls and practicing on Christmas carols. On Dec. 13, they will join with other Blue Bird, Camp Fire, and Horizon Club girls from Walteria for a caroling visit to the Correll Best Home and the Riviera Hospital.

Other groups that will join the Bluest Blue Birds for the caroling are the Violet Blue Birds, under Mrs. A. Klompin; the Happy Angels, under Mrs. W. J. Johnson; the Powerettes, under Mrs. N. N. Meyer; the Okeans, under Mrs. Bervan Thompson; and the Horizon Club, under Mrs. Daba Schneider. Musical director for the occasion will be Mr. Glen Craig.

In addition to the above joint project, the Okean Camp Fire Girls have just finished making ornaments for the Harbor General Hospital for use on their Christmas trees.

Pilot Club Yule Party

The home of Mrs. Gerald Cork, 3840 Eldorado Ave., will be gayly decorated for the Christmas party tonight of the Pilot Club members and their guests. Members of the Club Service Committee, who will assist Mrs. Cork as hostess, include Mrs. Charles E. Mitchell, Miss Elizabeth Holman and Mrs. Mary Young. There will be a social hour from 7 to 7:30 p. m., followed by a light business meeting conducted by Mrs. Clara Dougherty, club president. Plans for the club's visit to Ward G-13 at Harbor General Hospital will be the main item for discussion. Mrs. Cork and her committee have prepared a turkey dinner for their guests. There will also be an exchange of gifts.

At a recent program meeting of the Pilot Club, members were privileged to hear a talk presented by Mrs. Melton Girls' Adviser at North High School in Torrance. Mrs. Melton discussed some of the problems faced by high school students, how the school advisers try to help them and guide them in their choice of subjects. Mrs. Adel Buryfield and Herman Tollen of the Public Affairs Committee made arrangements for the dinner meeting.

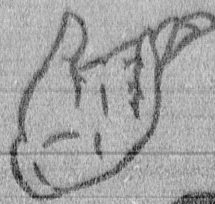
Perry PTA Board to Have Party

It's holiday time for members of the Perry PTA executive board. This evening at 8:30, the members will enjoy a buffet dinner at the home of Mrs. William Landon, 3910 W. 176th St. Setting for the party will be the recently completed den at the Landon home.

Christmas carols will be sung and there will be a gift exchange.

Mrs. Wendell Morgan and Mrs. William D. Landon are in charge of the arrangements. On their committee are Mrs. Roscoe Anthony, A. C. Prarat, Willard Waddell, John Motte, Kenneth Judd and Bill J. Van Meter.

A short business meeting will conclude the evening.

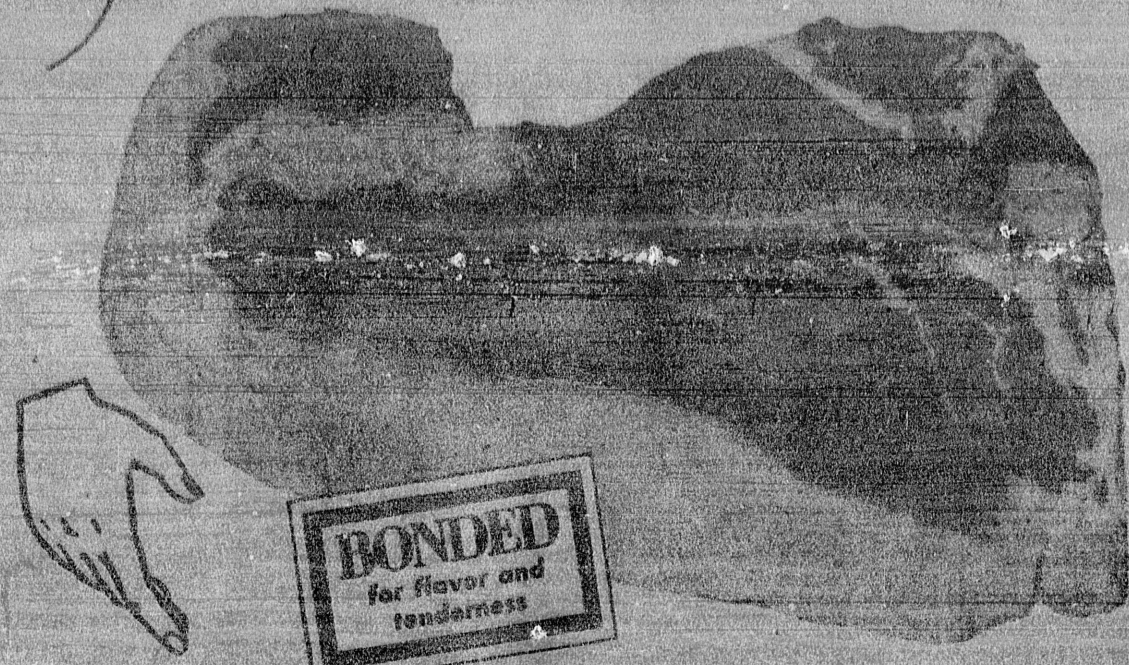


Jim Dandy Lucky

DIVISION OF



Lucky Bonded
Only Lucky puts
flavor and tenderness



BONDED
for flavor and
tenderness

T-BONE SIRLOIN

YOUR FAVORITE STEAK IS ON...
YOU'LL NEVER BELIEVE...
UNTIL YOU TRY THEM...
FLAVOR... DON'T MISS THIS...
SIGNED FOR YOU.

- KRISPY CRACKERS** . . . 27¢
THIN PLAIN SALINE CRACKERS . . . OUT-TASTE 'EM ALL! DOUBLE WAXED WRAPPED
- STRAWBERRY PRESERVES** . . . 49¢
OLD FASHION . . . HERE'S A SPECIAL WHAT . . . AT A SPECIAL PRICE.
- MINTED PINEAPPLE** . . . 29¢
LUCY'S BEST MINTED PINEAPPLE CEREAL. A NEW DELICIOUS FOR BRIGHT HOLIDAY DINNERS!
- PITTED OLIVES** . . . 25¢
SWEETENED'S OLIVE OIL RICH OLIVES. PITTED FOR LIGHTER TASTING.
- ANGEL FOOD CAKE** . . . 49¢
WALLBURY'S WHITE AND HYPOCRISIS WIKIN . . . FOR THE ILLUSTRIATED, TASTING ANGEL FOOD EYES.

BONUS COUPON

SPECIAL'S BEST GRANULATED

SUGAR

5 POUND BAG

35¢

WITH THIS COUPON
EXPIRES ONE COUPON

GOOD ONLY . . . THURS., FRI., SAT., SUN. - DEC. 11, 12, 13, 14

- PICT'SWEET PEAS** . . . 5/85¢
A WONDERFUL COMPANION TO A STEAK DINNER . . . TASTE, TASTY, TASTE!
- PICT'SWEET CUT BEANS** . . . 5/85¢
FRESH GARDEN FLAVOR PROVEN BY . . . TASTY, GREEN STRINGLESS BEANS.
- FRENCH STYLE BEANS** . . . 5/85¢
TENDER, TASTY, STRINGLESS BEANS . . . MEAT AND EAT.
- MIXED VEGETABLES** . . . 5/85¢
PICT'SWEET . . . WONDERFUL ASSORTMENT OF GARDEN FRESH VEGETABLES.
- PICT'SWEET CUT CORN** . . . 5/85¢
TASTY, SOLID, BEANLESS FROM THE WORLD'S FINEST CORN. WONDERFUL WITH YOUR FAVORITE STEAK DINNER.
- CHICKEN PIES** . . . 5/51¢
TASTY . . . CHICKEN, BEST OF TURKEY, FOR A MEAL IN A MINUTE. THIS IS IT!
- CHINESE DINNER** . . . 59¢
WONG'S DELICIOUS SANTONEN STEAK DINNER DINNER FOR A CHINESE DINNER.

- FAB** . . . 79¢
- VEL** . . . 79¢
- PALMOLIVE SOAP** . . . 3' 31¢
- VEL PINK** . . . 41¢
- AJAX** . . . 2' 33¢
- CASHMERE** . . . 3' 31¢

WEST TORRANCE Sepulveda & Hawthorne TORRANCE Greenwood & Torrance HERMOSA Pacific Coast Hwy. at South Line

M. J. B. COFFEE

1-LB. CAN

59¢

CREAM IT WITH CREAM 4-OZ. 31¢

- RAW MINCE MEAT** . . . 59¢
MADE FROM A RELIGIOUS GROUP FROM SELECTED QUALITY MEAT.
- RAW GLACE' CAKE MIX** . . . 49¢
WONDERFUL ASSORTMENT OF THE FINEST FRUITS.
- RAW Glace' Red Cherries** . . . 47¢
THE FINEST CHERRIES AVAILABLE . . . TO ADD BEAUTIFUL COLOR TO YOUR CAKE.
- RAW GLACE' PINEAPPLE** . . . 49¢
ENJOY DELICIOUS HOME MADE PINEAPPLE CAKE . . . MAKES IDEAL GIFT.
- Nestle's Ever-Ready Cocoa** . . . 49¢
MAKES DELICIOUS COCOA WITH THAT REAL OLD FASHIONED FLAVOR.
- LOG CABIN SYRUP** . . . 39¢
BEE HIVE BRAND FAMILY SIZE . . . AND 33¢

Holiday Gift FREE!

FAB-T-PAK SPARKLING WATER

FREE! When you buy two two quart FAB-T-PAK Cans, Orange Ale, Upper 10, Plus 3 for 49¢ Deposit

When you buy three bottles.

99¢

NAVEL ORANGES . . . 3' 31¢

BEST CHRISTMAS STOCKING SHOULD CONTAIN ONE OF THESE ORANGES . . . FILLED WITH SWEET WOODSWEET AND DELICIOUS

SELL UNWANTED ITEMS FOR CASH TORRANCE HERALD CLASSIFIED FA 8-4000

SQUIRE STYLE SHOPPE

1313 SARTORI DOWNTOWN TORRANCE

PRESENTS

CHRISTMAS TIME IS HERE AGAIN

STARRING

Lovely Girls' Dresses from Infants to size 14 by Ruth Originals - Patches and Cream - Gentry - Cinema and Eileen - You are sure to find the right one for your favorite "actress."

Star your favorite "Mama" with the newest sweaters - suits - jackets - coats - T shirts - all by famous makers of Boys' clothing.

WE GIVE S & H GREEN STAMPS!

In supporting roles you'll find here Christmas pajamas - in wanted sets for the little fellows and lovely ones made of outing - or knits made by Carter - Nifty Nite - Nanes - Iwanta - Rogers, etc.

Dolls - Indescribably lovely by Madame Alexander and Horseman and Nancy Ann.

Toys and Games galore - and as we've said before, "Christmas Time is Here Again." Come in and see for yourself - Use our convenient Lay Away Plan!