



CLUB PLANS . . . Going over plans for a local chapter of the Executive Officers Club are Dean Sears (left) of Bank of America and Del Nadeau, of Allen's Jewelers. Organizational plans were discussed at a luncheon here this week. (Searis Photo)

... Council

after one member, Malcolm Neal, resigned with a blast at the council last week. Neal charged that future airport leases "probably would have campaign fund" written into them.

Neal was criticized for his remarks by several members of the council. George Bradford said they were "unfair, unjust, and uncalled-for."

Wilby Blount said that if any of the other commissioners shared Neal's views, "he'd better get his resignation in now."

ON THE recommendation of

City Attorney Stanley Remel-meyer, the council authorized the city attorney to retain former City Attorney James M. Hall to study the Portobello Drive case where homeowners are in danger of losing homes because of earth slippage and poor drainage.

The city council has denied responsibility for the condition, and has had several surveys made of the area by private geologists and engineers. THE COUNCIL also received

in nomination five names for the newly created Civil Defense and Disaster Commission. Nominated were Mrs. Richard Gerald, Condr. William A. Mason, Jim Burdett, Atty. Gen. Peteron, and E. S. Schroeder.

The commission will be appointed by the mayor next week.

city's traffic commission on the problems of cars rolling down the hills in Allied Gardens area south of Sepulveda Blvd. Herbert Lieberman asked for a report on the matter after a number of cars damaged property in the area. Lieberman lives at 5428 Palms Verdes Blvd.

The council also asked that a meeting between the council and officials of the state be arranged to look at the intersection of Newton St. and Pacific Coast Hwy.

"I think a bulldozer is the solution to that problem," Beasley said Tuesday. Bob John labeled the intersection a "break." All councilmen agreed that it was no good.

Keep a close watch on traffic both in front and to the rear while driving, urges the Automobile Club of Southern California.



Obituaries

GERTRUDE L. FRONK
Funeral services for Gertrude Lillian Fronk, 70, of 1019 W. 204th St., were held yesterday at the Stone and Myers Mortuary Chapel with Rev. John Taylor, pastor of the First Methodist Church of Torrance, officiating.

Mrs. Fronk died here Monday after living here the past 18 years. She was a native of Excelsior, Wis.

Mrs. Fronk is survived by her husband, Fred; three daughters, Mrs. Ivan Brown and Betty Fronk of Torrance and Mrs. Robert McCurt of Washington; a son, Arnold Dooks of Torrance; a brother, Jack Daughters of Oregon; four grandsons, and two granddaughters.

Interment was in Roosevelt Cemetery.

CLEONE E. ASHTON
Funeral services for Cleone Elizabeth Ashton, 61, who lived with a son, Charles Ashton, at 5231 Lillian St., will be held in East St. Louis, Ill., following her death here Tuesday. Mrs. Ashton had lived here only a short time.

Local arrangements were handled by Stone and Myers Mortuary Chapel, and Mrs. Ashton's body was shipped east this week for the final rites.

OSCAR L. WAGNER
Funeral services for Oscar Lemuel Wagner, 66, of 214 Sartori Ave., were held Saturday morning at the A. M. Gamby Mortuary in Lomita with Rev. Robert Wells, pastor of the Narbonne Ave. Baptist Church, officiating.

Mr. Wagner died here Nov. 12 after living in the area for 17 years. He was a native of Kansas.

He is survived by his widow, Kra; a son, Millard, of Missouri; a daughter, Evelyn Sappan, of Oklahoma; a sister, Lettie Mulkhan, of Wyoming; and one grandchild.

Burial was in Green Hills Memorial Park.

Kinley Named Manager of Bank Branch

A new manager has been named at Bank of America's Lawndale branch. He is Thomas R. Kinley, former manager at the bank's Washington-Western branch in Los Angeles. Kinley succeeds Owen L. Thomas who has been promoted to an officer post in the business development department at Los Angeles headquarters.

The promotions for the two men were announced this week by Jesse W. Tapp, chairman of the bank's board of directors.

Thomas becomes a district business development officer at Los Angeles headquarters and as such will be headquarters representative in 42 branches in the Harbor area.

HE HAS managed Lawndale branch since it opened three years ago and, in the time since, has kept himself constantly busy with civic activities in the area. He has served terms as business chairman of Lawndale Community Chest and chairman of the parents' forum of Morningside Park Boy Scout. He is presently serving as treasurer for Lawndale Chamber of Commerce, Lawndale Breakfast Club and South Bay Shopping Center.

Thomas joined the bank's Los Angeles main office as a messenger in 1929 and became an officer in 1943 with his promotion to the rank of assistant cashier at Manchester-Vermont branch, Los Angeles.

One of his four sons, Robert, 22, also works for the bank at its Inglewood branch where he is currently on a special training program.

New manager Kinley has been with the bank since 1935, having then joined its Los Angeles Central Clearings Office as a messenger. He became an officer at Redondo Beach branch in 1943 and assistant manager at South Gate branch in 1946. He has managed the Washington-Western branch for the past five years.

Kinley also has another son in the family. One of two sons, Lawrence, 20, now in the U. S. Coast Guard, is on a military leave of absence from the bank's Simpson-Avalon branch, Los Angeles.

Next Sunday's Lesson-Sermon Topic Revealed

"Know ye not that ye are the temple of God, and that the Spirit of God dwelleth in you?" This question, put by Paul to the Corinthians (I Cor. 3:16), comprises the Golden Text which foundations the Lesson-Sermon "Soul and Body" in all Christian Science Services on Sunday.

The apostle Paul's exhortation in Romans (12:1, 2) is among the Biblical references used. He writes, "I beseech you therefore, brethren, by the mercies of God, that ye present your bodies a living sacrifice, holy, acceptable unto God. . . . And be not conformed to this world: but be ye transformed by the renewing of your mind."

"Reflecting God's government, man is self-governed," declares Mary Baker Eddy in "Science and Health with Key to the Scriptures." She explains, "As human thought changes from one stage to another of conscious pain and painlessness, sorrow and joy, from fear to hope and from faith to understanding, — the veritable manifestation will at last be man governed by Soul, not by material sense" (p. 125).

SOCK IT AWAY FOR NEXT YEAR . . . JOIN CITIZENS CHRISTMAS CLUB!

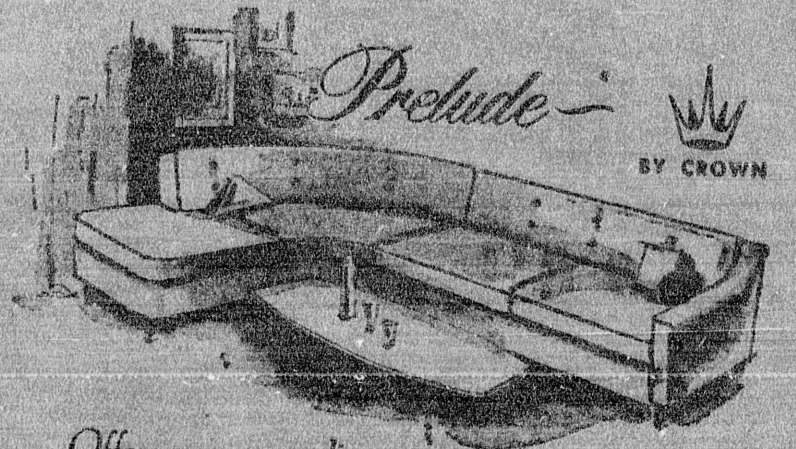
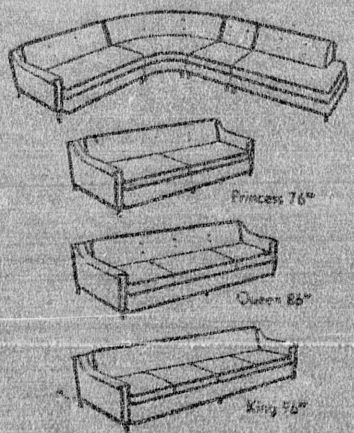


CITIZENS NATIONAL BANK
Member Federal Deposit Insurance Corporation
SOUTH BAY BRANCH
1701 So. Elmer Ave., Redondo Beach
JOHN BURGIE, Asst. Vice Pres., and Manager

Pre-Holiday Sale!



OF LIVING ROOM SUITES! SECTIONAL SOFAS! CHAIRS!

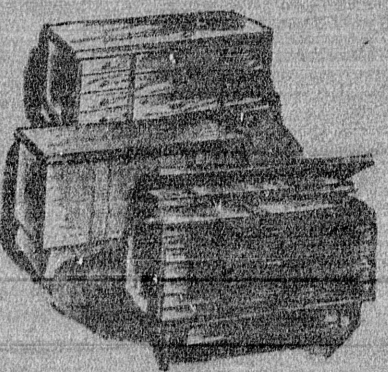


Offers ever-expanding living room comfort and beauty.

Now, you can pick the sectional, sofa or chair that fits your needs best at these attractive prices . . . add pieces later as space and budget permit. Prelude offers handsome design of timeless quality, superior workmanship and tailoring and heavenly comfort from foam cushioning.

Prices starting as low as **159⁵⁰**

She'll Always Treasure Your



CHRISTMAS GIFT of a LANE CEDAR CHEST



Best Buys Will Go Fast So Hurry! All Chests Have Lane's Famous Features!

BUY NOW! 1/3 SAVE TO

TERMS TO FIT YOUR BUDGET

LAY-AWAY NOW FOR CHRISTMAS YOU'LL LIKE OUR EASY TERMS

A SMALL DEPOSIT WILL HOLD YOUR CHOICE TILL CHRISTMAS

Bay Shore Furniture

SHOP 9 TO 9 WEEKDAYS - SATURDAY 9 TO 6 - SUNDAY 11 TO 6
16900 HAWTHORNE BLVD., LAWDALE
Corner of 167th St. - 2 blocks North of South Bay Center

