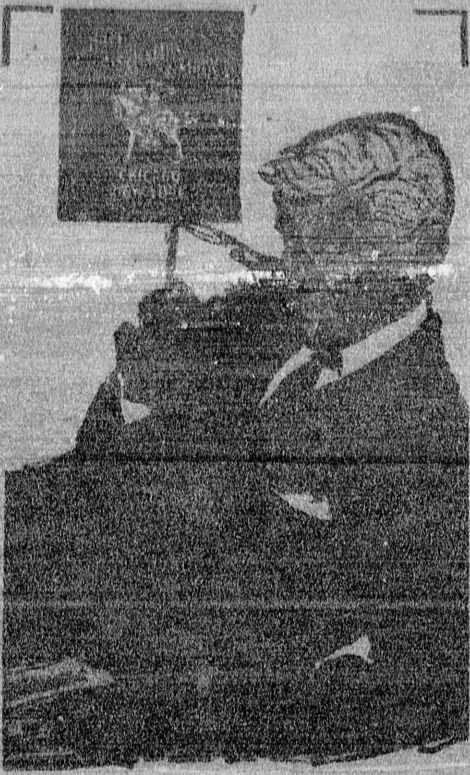


GARDENERS CHECKLIST

1. Leave dabbles in the ground until they have yellowed off and all their energy has drained back into the tubers. The loss vigor otherwise.
2. Newly planted weak-growing bushes should be staked against the danger of wind and rain to come.
3. When planting lilies remember not all of them look alike. You'll find Mid-Century hybrids, Aurelian hybrids, Bellingham hybrids, Fiesta hybrids, to name just four. Your nurseryman can show you pictures of what they look like.
4. Bait for slugs and snails. Far from driving them to cover, cool weather brings them out in new numbers.
5. Chrysanthemums in full bloom are still your best bet for some quick color to match the upcoming Thanksgiving season. Plants may be sunk in the ground or used inside.



women's thing to look for, men thing to find the coveted label of **MARY SCHAEFFER & MARK**

Just around you make a handsome, confidently relaxed appearance when you add the Mary Schaeffer & Mark label. It's the most important five square inches in an HESM suit because it represents the marks precision fabric, expert styling, American tailoring and the solid comfort of perfect fit. It's a man and one how the you look, how the you feel in an HESM suit. From \$ 79.50

OTHER FINE SUITS FROM \$49.50
YOUR CHANGE ACCOUNT IS WELCOME

TORRANCE MEN'S SHOP

SANTON AT MARCELINA
Downtown Torrance — Shop Fri. 10-9

He Has One Advantage



ON THEIR OWN . . . Albert and Katherine England, who have opened their own real estate office at 2730 W. Sepulveda Blvd., will specialize in houses and residential property. England is past commander of the Merchant Marine Post of the American Legion and of the local Post 8, Crossland Post. He also is past exalted ruler of the local Elks.

HERALD CLASSIFIED ADS GET RESULTS
FOR CLASSIFIED RESULTS PHONE FA 8-4000

New Foundation In South High School Voted

A change in the type of footing for two classroom buildings at South High School was approved by the Torrance Board of Education Tuesday night, due to an apparent error on the part of a soil-testing laboratory.

The two classroom buildings, scheduled to open in September, were designed with five-foot spread footings, based on the laboratory report that the ground would hold up to 1650 pounds pressure per square foot. When work on the classrooms began, it was found that the ground would hold less than 1000 pounds pressure per square inch. This type of ground will require 30-foot columns to support the building. The soil content on various parts of the 40-acre site varies considerably. Although redesign of the footings for the building has caused delay in starting work on them, school officials hope that they will be ready for use next September.

Dr. Barnum Tells Topic

Dr. Earl D. Barnum, minister of the Redondo-Torrance Church of Religious Science, has chosen as his subject for the pre-Thanksgiving Day Sunday Service, "First Things First." This year's Thanksgiving Service of the Church of Religious Science will be held at 10:30 a.m., Wednesday, Nov. 25, in the church classroom. Dr. Barnum's subject will be: "Gratitude — the Gateway to Abundance." These services are held in the Redondo Beach Masonic Temple.

Beach Cities Symphony Ready To Open Season Friday Night

The opening of a symphony or opera season always holds a certain excitement and anticipation for the music-minded, so hereabouts attention is focused on Friday, Nov. 21. In the auditorium of RUHS, at 8:15 p.m., as he faces the Beach Cities Symphony Orchestra, Conductor Louis Palange's baton will signal the start of the 1958-59 Concert Season, with the stirring strains of our National Anthem.

For the overture, there is the "Magic Flute" of Mozart. Written but two days before the opening performance, only a genius of Mozart's stature could take two ingratiating little themes and weave them into the harmonic tapestry of this delightful music.

The mood changes with Saint-Saens' "Dance Macabre," as ghostly shapes swoop and swirl through the graveyard, only to vanish at first cock-crow.

"Dance of the Comedians" from the third act of Scheherazade, "The Bartered Bride" is dancing of another sort—to the exciting rhythms and brilliant nationalistic color of old Bohemia.

Assured of a warm welcome is Elva Rita Diaz, of Manhattan Beach, who is guest soloist of the evening. The vivacious little lyric soprano numbers her friends in the hundreds, since the first was heard locally. Her career has flourished in many areas: Boston, New York, Hollywood, Mexico, Spain, Italy, England, and Hawaii. Accompanied by full symphony orchestra, Elva Rita will sing that most famous of Puccini arias: "Vissi d'Arte," from "La Tosca." Her second number will be the ever-popular "Granada" by Fara.

The major work of the evening is the Symphony No. 2, of Sicelius. This is a colossal gem of great beauty, reflecting the stark, rugged majestic Northland scene. Upon the completion of his first symphony, Finland bestowed on her gifted son a life pension, thereby enabling him to devote his whole time to composition. It was a priceless investment.

TO PLAY HIS INSTRUMENT. Absent from his chair in the first violins for the season is the gifted young three-year-old Canadian, Spiro Stamos, who is touring with the Boston Pop Orchestra in a series of 62 concerts.

CONDUCTOR PALANGE is a native Californian, a master of the woodwinds; he has directed countless radio, television, motion picture and Navy shows and wartime Navy documentary films. A prolific composer, his music publishers include the major houses of Carl Fisher, Theodore Presser, Borsley-Hawkes, and Gordon Music Co.

The concert program of Her Majesty's Grenadier Guards Band, which played at Serrano Auditorium a few weeks ago, included numbers of two American composers: John Philip Sousa and Louis Palange. H. M. Welsh Guards Band and H. M. Welsh Guards Band have both recorded on Vox label albums "An American Scene," by Palange. His "Hollywood Panoramas" premiered in Burbank's Starlite Bowl, and his "Romantic Piano Concerto" in Cleveland, with the Cleveland Symphony.

This is Director Palange's third season with the Beach Cities Symphony Orchestra.

Time to Look for CHRISTMAS

6-TRANSISTOR PORTABLE G.E. RADIO
Never, never before at this low, low price!
OUR PRICE ONLY—26⁵⁰ + tax.

One of these Brand New R.C.A. Sylvanite or Admiral 21" Console T.V.
LIMITED QUANTITY—SO HURRY!
One year picture tube warranty.
One year parts warranty. Aluminized picture tube.
Reg. 299.95 value
148⁰⁰

AMAZING VALUE 8 PIECE KODAK CAMERA OUTFIT
Includes film, flash bulbs & battery. Ready to go!
Takes black & white, color and EKTACHROME
Last one per color — NO DEALERS
7⁹⁹

STOCK UP NOW FOR HOLIDAY PICTURE TAKING!
FRESH 8 MM. KODAK COLOR MOVIE FILM
ADD UP THE SAVINGS \$1.79 ON THIS GREAT VALUE
SAVE 50% ON THIS
FILM 4-11
REG. 39. HOIL 400 BLACK & WHITE

RECORD PLAYER
Foreign Brand 3-SPEED
with woodcase, decorative vinyl cover
Completely portable
Regularly 29.95
15⁰⁰

NEW 39 ZENITH

Stereophonic
EQUIPPED WITH FACILITY
RECORD PLAYING INSTRUMENT WITH FM/AM RADIO
"The Overture — Model 57150"
See it . . . hear it and you'll say it's just what you want!

Color-matic 4-Speed Record Changer, 30 watt peak power output, lightweight cobra tone arm, Zenith stereo control panel and many more outstanding features.

ZENITH STEREOPHONIC 125⁰⁰
REMOTE SPEAKER UNIT with 40 watt peak output, stereo pre amplifier, precision control, separate bass and treble control.

ZENITH STEREOPHONIC 199⁹⁵
HIGH FIDELITY PRICES START AT

MARTIN'S
22782 Hawthorne Blvd.
South of Old Sepulveda
FR 5-6996 FR 5-9577
Open Monday and Friday 10 to 8
Other days 9:30 to 7:30 Closed Sunday

DISCOVER NEW VALUES
MARTIN'S

AMAZING VINYL PLASTIC For Exterior Stucco
In 126 Exciting Colors

\$3.98 per gallon

ONE COAT GIVES AMAZING RESULTS!
ROLL IT ON IN 4 HOURS
3 GALLONS DOES THE AVERAGE HOUSE.
WE GUARANTEE THIS TO BE A \$6.75 VALUE!

10% ADDITIONAL DISCOUNT FOR 5 GAL. MIN. QUANTITIES ON ANY ONE-COLOR

USE VINYL PLASTIC FOR BEAUTIFUL INTERIORS DRIES IN 10 MIN. ODMLESS

THURSDAY, FRIDAY, SATURDAY, NOV. 20, 21, 22
MOR-GLO PAINT FACTORY
19807 S. HAIR ST. (Between Carson and 190th St.) PHONE DL 4-8015
... SEE PAINT MADE ... Look for the Yellow Factory Building
OPEN DAILY AND SATURDAY, ALL DAY

DENTURES OR BREDIT
COMPLETE DENTAL SERVICE
No Down Payment
15 Mos. to Pay

ALWAYS LOW PRICES

FAST PLATE REPAIR
Anterior White to White
Softening Paraffin or Resin for Extractions at Home or Office
CHILDREN'S DENTISTRY

FA 8-9250

Open Mon. & Sat. Day 9:30 to 8:00
No Appointment Necessary

DR. JARR
DENTIST

19117 1/2 Sunset, Torrance
(Over Long's Dept. Store)
DOWNTOWN TORRANCE