

District Doctors Back Proposed Bond Issue

Many members of the medical profession feel that "medicine and politics don't mix." Occasionally, however, certain propositions are presented to the voters which—even the die-hard advocates of the above theory agree—should have the official backing of the medical profession, according to Frank Coliella, spokesman for the Southwest District of the Los Angeles Medical Assn.

Such is the case this year with the presence on the November ballot of County Hospital Bond Propositions D, E and F, Coliella said.

These three propositions are uncontested, and have been submitted for the consideration of the citizens of this community because of a dangerous crisis in the facilities of the Los Angeles County General Hospital, the association spokesman explained.

"THIS CRISIS is the direct result of the population explosion which is occurring in Los Angeles County," Coliella stated. "In the face of a population increase of 100 per cent since it was completed 25 years ago, the main hospital unit has become grossly inadequate in three vital areas: inpatient wards, outpatient clinics and diagnostic service facilities," he added.

A "YES" vote on County Hospital Bond Propositions D, E and F represents the most practical solution to this complex problem, pointed out the medical spokesman.

"Passage of these three bond issues will: (1) Free space in the main hospital unit for 300 patients at construction costs less than that required for new inpatient facilities; (2) provide adequate and properly designed outpatient areas; (3) Free space for expansion of diagnostic facilities; (4) Replace structurally unsound living quarters occupied by interns, resident physicians and nurses," it was noted.

Specifically, PROPOSITION D will provide for an Outpatient building at a cost of \$7,300,000. This building will provide adequate space for the 2800 clinic patients currently treated each day, and for the certain increases of the immediate future. In addition, it will free areas in the acute hospital unit for expansion of diagnostic service facilities.

PROPOSITION E will provide quarters for 375 nurses, and facilities for the School of Nursing, at a cost of \$4,082,000. This building will not only replace the structurally unsound wooden barracks now being used for nurses' housing, but will also provide room in the main unit for 70 inpatients by the release of space now occupied by the School of Nursing.

PROPOSITION F will provide quarters for 300 interns and resident physicians at a cost of \$3,361,000, and will replace inadequate, obsolete and structurally unsound existing quarters outside the main unit. In addition, space currently required for quarters will be released to provide room for 130 inpatients.

Harbor City Baptists Hold Retreat

Western Ave. Baptist Church of Harbor City held a leaders and workers' retreat at California Baptist Seminary, Covina, last Saturday.

Mrs. Minnie Graham, chairman of the lay development program, led the morning group discussions.

Plans were formulated to feature a "Pageant of Progress" on the church grounds Sunday, Nov. 2.

After-dinner speaker at the retreat was Dr. Howard McRain, pastor of the First Baptist Church of Covina, who discussed the topic, "Together for Progress." Pastors of the Western Ave. Baptist Church are Rev. Walter Graham and Rev. James Burned.

North High School To Get Traveling Science Library

Science will be emphasized, underscored and pointed up during the current year at North High School. Principal Dale M. Harter's application for participation in the Traveling High School Science Library program has been accepted by the American Association for the Advancement of Science. Two hundred outstanding, evaluated, up-to-date "best seller" type books in the sciences and mathematics will circulate to the school library from Washington, D.C.

All branches of science will be covered. The reading level will range from books the brilliant junior-high student will find interesting to some that will give the outstanding high school senior a taste of advanced work. The collection is valued for more than \$1000.

THE IDEA FOR this experimental program, aimed at interesting more students in scientific and technical careers, originated with the National Science Foundation, an agency of the federal government established in 1950 "to promote the progress of science."

The AAAS was requested to administer the program.

FINANCING THE urgently needed buildings by bond issues will result in an annual tax rate increase of only 4/5 cent on each \$100 of assessed valuation. And by spreading costs over 20 years, the cost of these facilities is shared by those who will benefit from them in the future.

Elks Lodge To Salute Newspapers

City officials, prospective members, and newspaper reporters and editors will be special guests at the Oct. 15 meeting of the Torrance Elks Lodge No. 1948, it was announced here yesterday by Exalted Ruler Roger Holmes.

The event, normally held during National Newspaper Week, was delayed this year to permit members of the lodge to attend sessions of the California Elks Convention in Fresno this week.

Chairman of Wednesday's special "triple night" meeting will be Chuck Marquand, featured lecturing knight of the local lodge.

He reports that the lodge has planned "lots of entertainment" following dinner and a short lodge meeting.

Obituaries

LEORA DILLER
Funeral services for Leora Dilleer, 2221 Clark Lane, Redondo Beach, were held at the Stone & Myers Mortuary Chapel yesterday afternoon with Rev. Chester L. Davis officiating. She died Sunday.

Mrs. Diller, who was 86, had lived in this area for 25 years. She was a native of Missouri.

She is survived by six daughters, Nora Leech, Maude Hatcher, Althia Frostbauer, Nola Kohal, Marie Tanner, and Coty Derry; four sons, Ivan, George, Lee, and Russell; 27 grandchildren, and 33 great-grandchildren.

She was a member of the Church of Christ. Burial was in Roosevelt Cemetery.

Lawson's Jewelers Holding Grand Opening at New Store

Eight years of service as one of the area's leading jewelry stores will be climaxed today with the grand opening three-day sale of Lawson's Jewelers in their new location at the corner of El Prado and Sartori in Downtown Torrance.

Much of the success in merchandising nationally advertised brands, at competitive prices with the option of 100 easy terms, is due to the company's genial manager and vice president of the 20th store in the chain of one of the largest growing Southern California jewelry chains.

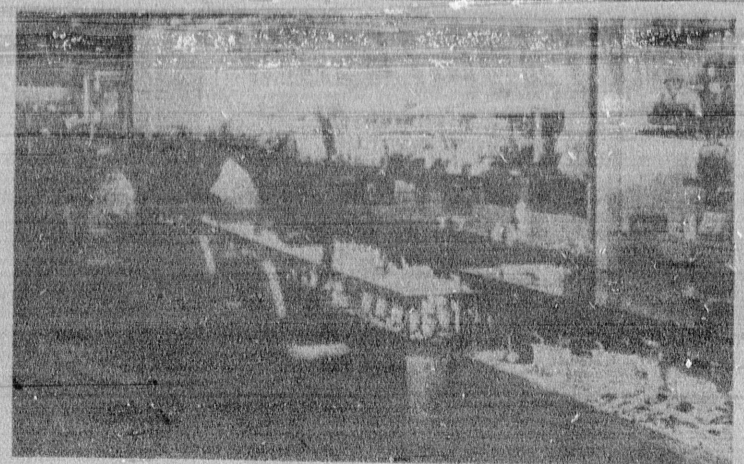


A. 'ROBBIE' ROBINSON is the man behind this operation. He is a local man and has been active in civic affairs during his business association here in Torrance. Robinson is a past president of the Lions Club, a life member of the Masonic lodge, and belongs to the Elks, Moose, and the Chamber of Commerce. He has three business rules: "Be friends with your customers; give them what they want at a price, and let them know their credit is good at Lawson's."

Lawson's, the 20th store in one of the largest growing Southern California jewelry chains, will have many items on sale and prizes will be given away, according to Dave Tanner, manager.

LAY-AWAYS FOR Christmas are being offered with an enlarged credit department to serve old and new accounts. New lines of merchandise have been added with larger and better selections.

The same staff of salespeople from the old store, located at 1317 El Prado, will be on hand to serve customers from 9 a.m. to 9 p.m. today, Friday and Saturday.



PREVIEW... The above photograph shows the beautifully appointed interior of Lawson's Jewelry Store located at El Prado and Sartori in Downtown Torrance. A grand opening sale is in progress today, Friday and Saturday. Manager Dave Tanner is pictured showing a customer a watch from their large selection of timepieces. (Herald)

For Herald Want Ads Call FA 8-4000

EVERY DAY'S A SPECIAL DAY AT Thriftmart

THERE'S A SYLVANIA LAMP FOR EVERY PURPOSE AT

Thriftmart

STOCK UP NOW AND SAVE... SIGHT AND MONEY FLASHING FAVORITES

EVERY DAY'S A SPECIAL DAY AT Thriftmart

QUALITY MEATS

U.S.D.A. GRADE 'A' NEW CROP OVEN-READY 9-14 LBS.

FRESH HEN TURKEYS 39¢

CENTER CUT LOIN AND RIB

Pork Chops 69¢

END CUT RIB

Pork Chops 49¢

RIB HALF LOIN

PORK ROAST 53¢

COUNTRY STYLE PORK RIBS 49¢

OSCAR MAYER—12-oz. Pkg.

Smoke Links 59¢

LUER'S QUALITY—1-lb. Pkg.

Sliced Bacon 59¢

OSCAR MAYER EASTERN PORK

SPARERIBS 49¢

VICTOR BORGE ROCK CORNISH

GAME HENS 14-oz. 89¢

CERTI-FRESH FROZEN

BREADED SOLE 10-oz. 45¢

FRESH

PACIFIC OYSTERS 12-oz. 53¢

CERTI-FRESH FROZEN

PERCH FILLETS 1-lb. 39¢

FRESH FILLET OF

DOVER SOLE 59¢

SLICED NORTHERN SILVER

FRESH SALMON 79¢

EVERY DAY'S A SPECIAL DAY AT Thriftmart

FINEST PRODUCE

CORN on the COB 5¢

RED DELICIOUS APPLES 10¢

RED VELVET YAMS 8¢

FRESH GREEN CABBAGE 4¢

JERSEYMAID COTTAGE CHEESE 25¢

JERSEYMAID CATERING BANANA NUT ICE CREAM 59¢

EVERY DAY'S A SPECIAL DAY AT Thriftmart

ALL GRADES—YURAN, SANKA OR

MAXWELL HOUSE COFFEE 1-LB. 79¢

DUNDEE FRESH LARGE GRADE 'AA' EGGS 60Z. 49¢

BIRDS EYE—BEEF, CHICKEN, TURKEY 11-0Z. 49¢

FROZEN DINNERS COUNTY FAIR (CHOC., COCONUT, 24-oz. Pkg. 47c) 24-0Z. 39¢

FROZEN PIES BERRY, CHERRY, APPLE, PEACH 9-0Z. 39¢

SARA LEE FROZEN BROWNIES, CHEESE CAKE OR COFFEE CAKES 6-0Z. 69¢

CAMPBELL'S TOMATO SOUP 10-0Z. 10¢

FOR BETTER SIGHT SYLVANIA LAMPS 60 or 75 WATTS 21¢

QUAIL BRAND APPLE SAUCE 10-0Z. 10¢

CAL FAME FROZEN ORANGE JUICE 4 6-0Z. 11¢

BEECHNUT STRAINED BABY FOOD 4-0Z. 29¢

NORTHERN TOILET TISSUE 2 8-0Z. 17¢

HOUSEHOLD HANDY COMET CLEANSER 2 14-0Z. 33¢

QUAIL BRAND TOMATOES 2 8-0Z. 33¢

ELBERTA FREESTONE, HALVES OR SLICED LAZY DAISY PEACHES 8-0Z. 23¢

KOBY'S ENGLISH MUFFINS 6 CT. 28¢

WISHBONE RUSSIAN DRESSING 8-0Z. 33¢

HOMOGENIZED JERSEYMAID MILK GOLD MEDAL WINNER 1958 L.A. COUNTY FAIR 1-0Z. 22¢

CHUBBY DOG FOOD 8-0Z. 5¢

STA CRISP SODA CRACKERS 1-10Z. 27¢

LIQUID SUN DETERGENT 1-PK. 37¢

O'BOY FROZEN PIZZA WITH SAUSAGE 4-0Z. 49¢

CITRA-GOLD ORANGE JUICE DRINK 40-0Z. 37¢

JUICY AND TENDER LUER'S FRANKS 1-LB. 53¢

TENDER MADE CANNED WILSON'S HAMS 8-1/2 LB. 57¢

WISCONSIN 1-YEAR-OLD AGED CHEDDAR CHEESE 1-LB. 69¢

JANE ANDERSON'S WISCONSIN GRADE 'A' SWISS CHEESE 1-LB. 75¢

JANE ANDERSON'S FROZEN 8-INCH PIZZA PIE WITH MOZZARELLA CHEESE 7-0Z. 39¢

SPECIALS FOR THURS., FRI., SAT., SUN., OCT. 9, 10, 11, 12

EVERY DAY'S A SPECIAL DAY AT Thriftmart

26626 Western Ave. At Palms Verde Drive — DA 6-7016

22217 Palms Verde Blvd. At Sepulveda Blvd. — FA 5-2907