

Committee To Consider Tax Exemption On Vessels

State Assemblyman Charles Edward Chapel announces a meeting of the Assembly Subcommittee on Taxation of Ships Under Construction, of which he is a member, will be held Oct. 9 and 10 at 10:00 a.m. in the hearing room, Hacienda Hotel, 301 South Western Avenue, San Pedro, to consider tax exemptions for vessels under 1000 tons.

This subcommittee, according to Assemblyman Chapel, is that portion of the Assembly Interim Committee on Revenue and Taxation, which is authorized and directed to ascertain, study and analyze all facts relating to the taxation of vessels of less than 1000 tons under construction.

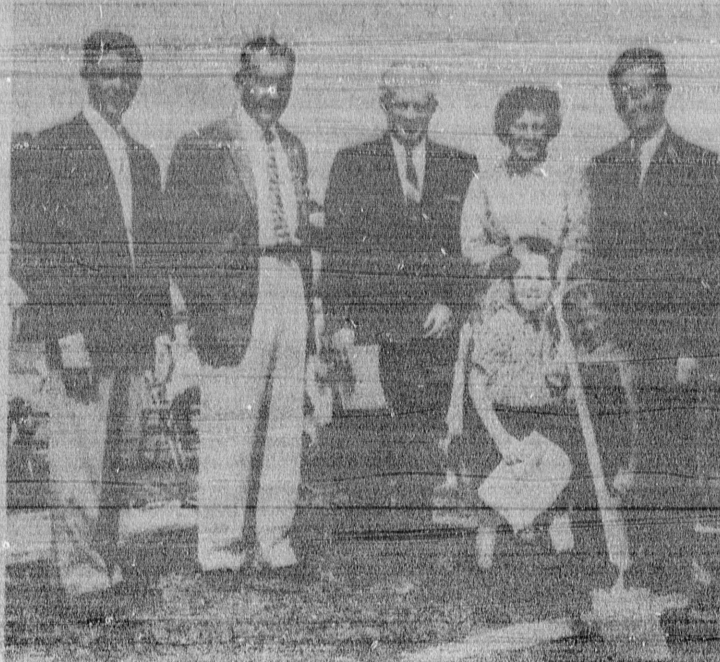
The 1958 General Session of the Legislature enacted a measure, Chapel explained, whose provisions exempt from taxation vessels of 1000 tons and over, which has provided substantial contracts to California industry on work which would have gone to other states if the tax exemption had not been granted. Extension of vessels between 50 and 1000 tons is to be considered at the hearing on Oct. 9 and 10. If time permits, Chapel added, consideration also will be given to a proposal to change the tax rate on tuna boats.

In addition to Chapel, the members of the subcommittee are Vincent Thomas, of San Pedro, who will preside at the hearing; George G. Crawford, San Diego; S. C. Masterton, Richmond; and Alan G. Patten, Salinas. Citizens wishing to testify should write immediately to Walter I. Dahl, Chairman, Assembly Interim Committee on Revenue and Taxation, Room 3135 State Capitol, Sacramento 14, Calif.

First Aid Night Courses Begin

Evening classes in Red Cross standard first aid training got under way after a one-week postponement at Narbonne High School, 21300 Western Ave., Tuesday at 7:30 p.m.

The five-session course, which is being taught by Mrs. Marguerite A. Gerson, will meet for two hours each week.



CHURCH PROJECT... Construction on a new school wing at the Walteria Community Methodist Church was given an official start Sunday when Rev. Wendell Hook, (right), pastor of the church, and visiting church leaders turned the symbolic first shovel of earth. The new facility will provide badly needed office and Sunday school classrooms.

Walteria Church Breaks Ground for School Wing

Groundbreaking ceremonies for a new educational unit were conducted at Walteria Community Methodist Church last Sunday. Completion date for the new structure is set for Jan. 1, 1959.

The two-story structure to be erected will provide a nursery, six classrooms, a kitchen, and offices for the minister and Sunday school superintendent. Estimated cost is \$45,000.

Chartered in September 1951, the church moved into its present building five years ago, during which time Sunday school attendance has almost doubled.

On hand for the groundbreaking ceremonies were Mayor Albert Ison, Councilman Victor Bonstead and J. A. Beasley; Don Matthews, builder; Long Beach District Superintendent Dr. Stanley McKee, and Rev. Wendell Hook, pastor of the church.

CARRIER HEIGHT

The U.S. aircraft carrier *Chacabuco* measures 187 feet from waterline to the top of the foremast.

H'way Group Weighs Odds -- H'lywd Vs. S.D. Freeway

In a report released today by Sen. Richard Richards, the senator points out that the Joint Interim Committee on Highway Problems is faced with the choice of completing the Hollywood Freeway prior to the northern end of the San Diego Freeway following its recent hearing.

According to Senator Richards, the two-day hearings just concluded were designed to sound out community opinion on freeway-construction priorities in the presence of state highway officials who sat with the committee.

These local meetings were a part of an over-all study being made by the committee in all major areas "to guide us in laying out a state highway system and to ascertain community reaction to proposed construction schedules," the senator stated.

The two areas of Los Angeles County to which particular

attention was given he pointed out, were the San Fernando Valley and the southwest section, with the two-day session divided between North Hollywood and Inglewood.

AT THIS time, according to Richards, the major concern of Valley communities is with the need for speeding up the flow of truck traffic through this area to relieve the present burden on residential and business streets that were never intended for throughway traffic.

Most of the city officials and civic leaders speaking for these communities brought the completion of the Hollywood Freeway would offer the earliest relief from their most pressing problems. "Although there were some who favored giving priority to the northern end of the San Diego Freeway, he added.

"AS TO THE southwest area, so far as their presentation to our committee was concerned, there was complete unanimity among the 10 communities represented at the Inglewood meeting," he said. "Their concern is with expediting construction of the San Diego Freeway through this area, and particularly in linking it with the Harbor Freeway from a point north of the International Airport," stated Richards.

"Through Assemblyman Charles Chapel, who represents a good part of this area and who is a member of our committee, local governments have worked very effectively in determining their freeway needs and presenting a solid front before the committee and the highway department in their request for this priority," he added.

ON THE day following the two-day meeting, a new 2.6 miles extension of the Harbor Freeway was opened for traffic between 88th Pl. south to 124th St. A further extension of 4.9 miles from 124th to 190th St. has been contracted for, at a cost of \$7,578,087, with the completion date set for somewhere around the middle of 1960, Richards pointed out.

At the end of the current calendar year, over 80 miles of new freeway will have been completed and made available to the traveling public, he explained. A stepped-up program more funds for freeway construction into the highway district of which our county is a major part, he further stated.

"FOR THE fiscal year 1958-59 the amount expended will come to around \$132,000,000," he said. From 1960-61 forward it will average around \$155,000,000 per year," he added. "In comparison," he pointed out, "from 1947 to 1952, the total amount expended in this district was \$142,000,000. From 1955 to 1956 the average yearly expenditure was \$108,000,000."

The Division of Highways expects a one billion-dollar freeway accomplishment in the next six years, according to Richards.

County Okays Road Project On 242nd St.

Reconstruction of 242nd St. between Narbonne Ave. and Eschelman Ave. has been authorized. It was announced here yesterday by Supervisor Burton W. Chase.

Chase said the county road department had been authorized to proceed immediately with the project.

Upon completion, this project will provide the traveling public with a smoother riding surface which should expedite the flow of traffic through the area, Chase said.

Motorists are being advised to use alternate routes where possible during the construction period.

HUMIDITY RATE
The average rate of humidity found in Louisiana's sugar growing country is higher than at any other point recorded in the United States.

WESTERN FARMS MARKET

WE GIVE YOU GREEN STAMPS

SHOP & SAVE THE WESTERN WAY

HEY KIDS! COME ABOARD THE LUTER SPACE SHIP

TAKE A TRIP TO OUTER SPACE WEDNESDAY, OCTOBER 8 12:30 to 6:30 P.M. LOOK FOR OUR ROCKET SHIP SPECIALS!

FRYING CHICKENS

Whole Body Grade A - Colored

33¢

CUT-UP 37¢

4-1

TABLE BRAND

BACON

1-LB. CELLO PKG.

59¢

ANNIVERSARY JUBILEE

SMOKE LINKS

ALL MEAT - 10-oz. Pkg.

55¢

ALL MEAT WIENERS

LB. PKG.

53¢

SHORT RIBS 29¢

WE FEATURE FARMER JOHN PORK, HAM & BACON

JUMBO - IMPERIAL VALLEY

CANTALOUPE

2 for 25¢

GOLDEN BANTAM - SWEET

CORN

4 ears 15¢

PIPPIN APPLES

FINE FOR SAUCE, PIES and SALADS!

7 25¢

7 lbs.

U.S. NO. 1 - WHITE ROSE

POTATOES

10 lbs. 25¢

HOME GROWN

TOMATOES

4 lbs. 15¢

FLUFFO

3 lb. Tin

57¢

FRESH EGGS

LARGE GRADE AA

49¢ doz.

TUNA

BREAST OF CHICKEN

79¢

3 CANS (3-CAN PACK)

BUTTER

DAIRY MAID

69¢

1-lb. Can.

POTATOES

HUNT'S 1-LB. CAN WHOLE NEW

2 for 19¢

TOMATOES

HUNT'S 300 CAN

2 For 25¢

WESTERN FARMS LIQUOR DEPT.

"BUY OF THE WEEK"

STRAIGHT BOURBON

HALLERS DELUXE 7 YR. OLD

\$3.99

SCHICK EJECTOR

BLADES - 12 blades 49¢

MODER 2-89¢

MORTON'S FROZEN Spaghetti Dinner 29¢

PIG-SWEET 10¢

FROZEN PEAS 10¢

POWDER COOK 2-27¢

TISSUE 2-27¢

COUPON

FREE! FREE!

1-lb. TOMATOES & 1 lb. ONIONS

With Your Purchase of 1 lb. ANTHONY SPAGHETTI IN the Regular Price of 23¢

COUPON