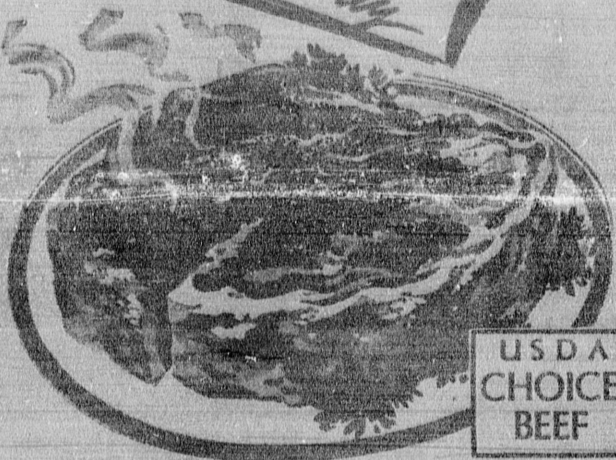


LEAD!

BIG FUN!

Week Sale
RIB
STEAKS
barbecuing feasting
icy, beer-aged



USDA
CHOICE
BEEF

Save on your Favorite Steaks!
TENDER CLUB STEAKS SELECT BEEF
Top Sirloin Boneless steak \$1.09 lb. T-Bone Lean, tender 98¢
Filet Mignon Meat cut \$1.59 lb. Porterhouse Juicy and flavorful 98¢

FRESH FRYING
CHICKEN PARTS

LEGS (including Thighs) from plump, tender young fryers to cook up crisp, golden brown!

59

LB.

Fresh Chicken Breasts Tender, moist young fryers 65¢

Fresh, choice GROUND ROUND per pound 65c	Lean, fresh GROUND CHUCK per pound 55c	Juicy, fresh GROUND BEEF per pound 45c
---	---	---

SUN CREST
Sparkling
BEVERAGES
Also popular flavors. Great also hot! 8 for \$1
29-oz. BOTTLE

PICNIC FROZEN
LEMONADE 12 6-oz. cans \$1
CONTADINA FRUIT
COCKTAIL 3 No. 23 cans \$1
LUNA'S SLICED
BOLOGNA 14-oz. pkg. 59¢
MOOREHOUSE
MUSTARD 24-oz. jar 23¢
TREAT TIME
MIXED NUTS 14-oz. can 69¢
TREAT TIME—SALTED
CASHEW NUTS 10-oz. bag 41¢

Give your pet a Holiday feast!
THORPED DOG FOOD
Completely nourishing 2 No. 1 cans 29¢
Kitty 100% Salmon Cat Food 2 1/2 lbs 25¢

\$6.59

EACH!



TORRANCE
1321 POST AVE.

105 HAWTHORNE BLVD.
HAWTHORNE

From
Oct 6
through
Sunday
August
28, 29, 30, 31
1958

Air Explorer Units to See Air Academy

Seventy-five Air Explorers from the Los Angeles Area Council and Long Beach Area Council, Boy Scouts of America, will board Air Force planes on Sunday, Aug. 24, for a trip to Lowry Air Force Base in Denver and the new Air Force Academy at Colorado Springs, Colo. Nine adult leaders will accompany them. During their week-long stay in Colorado the group will tour all Lowry installations and the Air Force Academy. Several Air Explorers will also take the Academy entrance examination.

Purpose of the unique visit is to acquaint Air Explorers with the Air Academy, as many of them hope to qualify for an appointment. Air Force figures show that 26 per cent of the present student body at the Academy are former Air Explorers.



DOWN TO BUSINESS... Mrs. Carl Taylor Harbor area headquarters chairman, goes right to work at the new Community Chest campaign headquarters, 3712 N. Pacific. "More of everything... pencil work, paper work and just plain hard work will be necessary if the Chest is going to make a million more this year," Mrs. Taylor explains to (left to right) Wilmington City Chairman, Roy McElroy; Al Moe, San Pedro City Chairman and Glenn Koger, Harbor Area chairman.



Camino Pharmacy

We stand ready at all times to fill your physician's prescriptions from fresh stocks of pharmaceuticals.
4060 W. 226th Street
(Across from Riviera Hospital)
Torrance Frontier 8-1211

Top Southland Builder Says Quality Is a Must

Millions of dollars are being lost each year by Southern California home owners because they are building sub-

standard income units which cannot weather the years ahead.

This was the statement today of one of the Southland's leading builders, Robert Marshall, president of Marshall Builders, who have sold more than 10,000 units during the eleven years the firm has been in business.

EVEN DURING an inflationary period, well-built units will continue to increase in value and will not depreciate like autos or refrigerators. This makes properly constructed units a sensible and remunerative investment," Marshall said.

Marshall criticized builders and buyers who settle for cheaply constructed income units. "These units are being sold to the public under the guise of saving them money. Actually, units which are not built to last, will in a matter of a short time, cost buyers a tremendous amount in maintenance and loss of income as tenants will be forced to move to other more adequate units," Marshall said.

"IF A PERSON is building an income unit today, in order to protect his investment a substantial, efficient, and economical unit must be built which will maintain its modernity and its soundness throughout the years instead of becoming outdated," Marshall continued.

Marshall also cited the fact that units must be designed to aid the immediate area in which they are built. "Units must be geared above the neighborhoods where they are located so they can continue to keep the building standards in that particular neighborhood at a high level," Marshall said.

WOW

LUBOV VODKA

SOFT SMOOTH
BEST BY TEST AS
IDEAL MIXER!
TESTIMONIAL BY
THOUSANDS OF
SATISFIED
CUSTOMERS

Mode according to some right formula applying to Vodkas selling at \$4.95 6ths.

OUR PRICE \$2.98

SAVE MORE THAN 10%
3 BOTTLES (6ths) \$8

OLD GOLD, STRAIGHT
8-YR. OLD
BOURBON \$3.29

Bottled in Kentucky. Save plenty on this Superior Bourbon. Quality equal to Bourbons selling at \$4.99 6ths. Every bottle sold with unconditional guarantee.

OUR PRICE

OLD TOKEN 7-Year Old, 100 Proof
BONDED BOURBON

Comparable quality to Bonded Bourbons selling at \$5.75 6ths

OUR PRICE \$3.98

Less 10% by case

KIRBY PREMIUM QUALITY
EASTERN BEER
Rich Lager Flavor!

FULL CASE 24 12-oz. cans \$2.98

San Chico West Indies Rum
Blends with 6 oral Rum Cakes, (Daiquiri or Cuba Libre)
Comparable in quality to Rums selling at \$4.34 1/2th

OUR PRICE \$2.98

YOU

MAY BE PAYING UP TO 40% TOO MUCH FOR YOUR AUTO INSURANCE

That's a stiff price to pay for not knowing that State Farm Mutual... a carefully driver insurance company... charges far less than most other companies.

How much can you save? Your monthly auto rates agent can tell you quickly. Call him today!

JACK SMITH
1711 Cubelle Avenue
Torrance - FA 8-3803



FOX

From
Oct 6
through
Sunday
August
28, 29, 30, 31
1958

1 DAY SALE!
Thursday thru Sunday
Aug. 28, 29, 30, 31
CLOSED
LABOR DAY

TORRANCE—1321 Post Ave.
HAWTHORNE—105 Hawthorne Blvd.