

## Bridge, Street Projects To Bolster Flood Control

In preparation for the permanent improvement and reconstruction of Dominguez channel between Donker Ave. and Gramercy Pl., for which bids will be opened on Aug. 22, the board of supervisors this week approved an agreement between the Flood Control District and the City of Torrance for bridge and street improvements in connection with the project, according to Supervisor Kenneth Hahn.

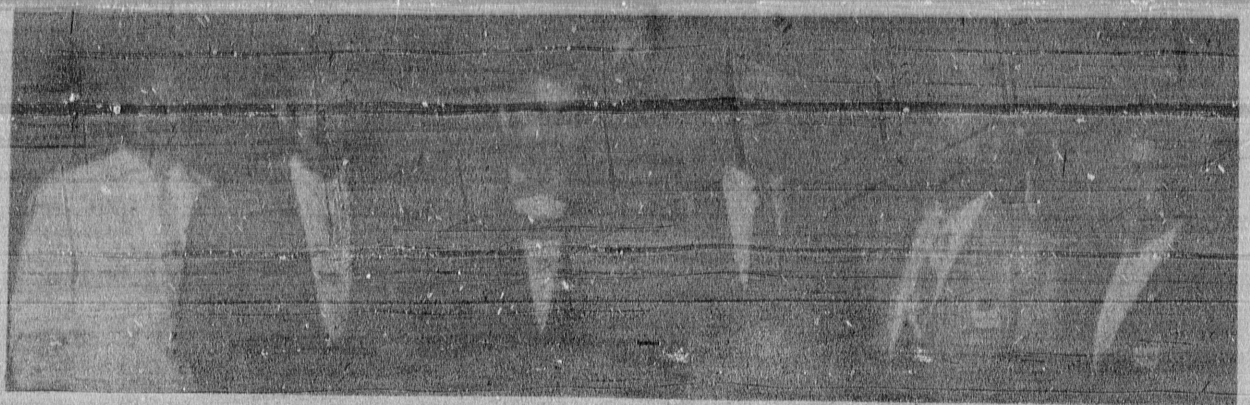
The agreement, which had earlier been signed by Torrance Mayor Albert Ison, calls for cooperative widening of new bridges to be built across the channel at Western Ave. and at Gramercy Pl. It will also include improving the approaches to the bridges.

SUPERVISOR HAHN, who has urged that improvement

of the channel to be expedited to provide maximum flood control to Torrance and the Gardena and Centinela Valleys, pointed out that the bridge improvements are vital.

"The narrow culverts now under these streets are inadequate to carry the flow of water. They catch debris which dams the channel and causes the water to back up and overflow the banks," he pointed out.

The two bridges will be reconstructed to master plans standards. The channel reach under the bridges will be widened to 75 feet and will have a depth of approximately 18 feet.



**NEW ELKS MEMBERS . . .** New members initiated into the Torrance Lodge 1948 of B.P.O. Elks last week (left to right) are John Sanina, Conrad Bojorquez, Exalted Ruler Roger Holmes of the lodge, Mayor Albert Ison, Councilman George Braford, and Aleck Fragnoso. Transferring to the lodge at the same time were Police Chief Percy Bennett and Sgt. Gus Rothwisch.



**JOINS CADETS . . .** Eight-year-old Steve Westcott, who can play many of the toughest drum solos, joined the Torrance Cadet Band this week as mascot. Director Jim Davidson says Westcott has mastered such tough drum selections as "Downfall of Paris," "Connecticut Fight-Tune," and "Grandfather's Clock." He is the son of Mr. and Mrs. George Westcott of 4912 Revere Road.

(Herald Photo)

## Swim Pool Reservations Open Today at El Camino

Reservations for swimming lessons in the El Camino College pools for the final summer instruction period, Aug. 18 through 29, will be available from 8 a.m. until 4:30 p.m. today in the college business office.

Classes for 10, 11, and 12-year olds will be conducted from 8 a.m. until 9 a.m. daily throughout the period, while instruction for 7, 8, and 9-year-olds will start at 9 a.m., 11 a.m. and at 2, 3, and 4 p.m. daily.

Instruction tickets for adults are also available for the coming two-week period. Hours for swimming lessons for those 16 years of age or over are from 7 to 8 and from 8 to 9 nightly.

**COST OF THE** swimming lessons is \$1 per two-week period. Minimum height for the swimming program is 52 inches.

Swimmers must furnish their own suits and towels; girls must wear bathing caps. Adults may purchase instruction tickets for children only if the children are present, the college emphasized.

Recreational swimming hours through Aug. 29 are conducted each Saturday from 8 until 10 a.m., 10 a.m. until 12 noon, and from 1 until 3 p.m. Minimum age is 7. Adults 18 and over may swim from 4 until 10 p.m. Monday through Friday, the 6 to 7 hour each morning is reserved as Family

## Local Grads Rated Tops By Recruiter

Torrance and North High graduates rate tops among those taking Navy tests, Chief Vince Lawler, Navy recruiter for the area, has informed local school officials.

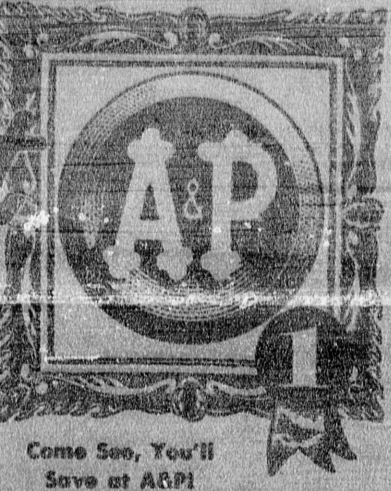
Recent Navy enlistees from Torrance all have ranked considerably above the score required to obtain Navy school training, and 10 of last month's 18 enlistees were in the top ten per cent. Good ratings on the Navy tests are required for an enlistee to be guaranteed a training school.

Lawler said recruiters urge all students to complete high school before enlisting in the service, since an increasing amount of training is necessary in today's increasingly complex world.

**CONGRESS BALANCE**  
Four states—Delaware, Nevada, Vermont, and Wyoming—each have two senators in Congress, but each of them is entitled to only one representative on a population basis.

**A&P HAS A SPECIAL TALENT...**

# In the Fine Art of Thrift



Come See, You'll Save at A&P!

**U.S.D.A. CHOICE GRADE ROUND STEAK** BONE IN **69¢** lb.

**EASTERN HICKORY SMOKED HAM** SHANK END PORTION **45¢** lb. BUTT END PORTION **53¢** lb.

WHOLE or EITHER HALF HAMS NO CENTER SLICES REMOVED . . . **59¢**

"NORBEST" U.S.D.A. GRADE "A" **BELTSVILLE TURKEYS** FOR BARBEQUE OR ROTISSERIE **49¢** lb.

U.S.D.A. CHOICE RUMP **ROAST** BONE IN **65¢** BONE LESS **75¢** HICKORY SMOKED **HAM SLICES** CENTER CUT **95¢**

U.S.D.A. CHOICE **SIRLOIN TIP** BONELESS ROAST **79¢** LEAN **GROUND ROUND** **69¢**

U.S.D.A. CHOICE **ROUND STEAK** BONE-LESS **79¢** GULF OF MEXICO **MEDIUM SHRIMP** **89¢**

U.S. NO. 1 LONG WHITE **POTATOES** **10 LBS. 29¢**

FANCY THICK MEATED **CANTALOUPE** VINE RIPPENED **4¢** lb.

WONDERFUL SAVINGS IN FRESH FRUITS and VEGETABLES

FANCY-ELBERTA-FREESTONE

# PEACHES

FULL LUG

**159**  
APPROX. 22 LBS.

EATING-CANNING-FREEZING **3 LBS. 25¢**

A&P's WONDERFUL GROCERY VALUES

PROGRESSO **STEWED TOMATOES** 2 1-lb. Cans **29¢**

COUNTRYSIDE—SMALL GRADE "A" **FRESH EGGS** 3 Doz. Cans **89¢**

A&P—SECTIONS OF **GRAPEFRUIT** 2 1-lb. Cans **37¢**

PATRICIA CUT **GREEN BEANS** 8 15 1/2-oz. Cans **1<sup>00</sup>**

TAVERN PALE **EASTERN BEER** 2 12-oz. Cans **29¢**  
12-oz. Cans **1<sup>00</sup>** 24-oz. Cans **3<sup>25</sup>**

SULTANA—GRATED **TUNA FISH** LIGHT MEAT 2 6 1/2-oz. Cans **45¢**

DELICIOUS HOT OR COLD **ARMOUR TREET** 12-oz. Can **45¢**

N.E.C. SUGAR **HONEY GRAHAMS** 1-Pound Package **32¢**

ARMOUR **BEEF STEW** FOR QUICK MEALS 24-oz. Can **45¢**

PETER PIPER **SWEET PICKLES** 2 1-lb. Cans **30¢**

CRIFTON **TOILET TISSUE** 2 Rolls **27¢**

GREEN'S **BABY FOOD** Sterilized 3 Cans **29¢**  
Jars 3 Cans **35¢**

ZEP **SANDWICH BAGS** 10 **10¢**

BREAST OF CHICKEN **TUNA FISH** STYLE 2 12-oz. Cans **29¢**

ARMY PACK **PORK & BEANS** 2 1-lb. Cans **27¢**

SULTANA—Large or Small **Spiced Olives** 12 1 1/2-oz. Cans **49¢**

1330 EL PRADO — TORRANCE  
MARKET & LA BREA — INGLEWOOD

Prices Effective Thurs., Fri., Sat. & Sun., August 7, 8, 9, & 10th in all Los Angeles County stores  
All A&P STORES ARE OPEN SUNDAY \*TAXABLE ITEMS SUBJECT TO TAX



THE GREAT ATLANTIC & PACIFIC TEA COMPANY