

Girl Scout Troop 208 recently joined in a "Playday" at Banning Park. Approximately 130 girls of Parent-Teacher Assn. and led the Wilmington area parties by Mrs. Millard R. Feil, reported in games, dancing, singing and dramatics. Adult leaders and helpers supervised and instructed in the activities.

Gifts of Brownie Scout age were invited to take part in the fun.

Bids Due Sept. 11 on Harbor Freeway Section to 190th St.

With a short section of the Harbor Freeway having been opened last Friday, early construction of the next stretch south, between 124th and 190th streets is assured as the State Highway Department has issued a call for bids to be published tomorrow on the five mile segment.

Bids are scheduled to be opened on Sept. 11. Supervisor Kenneth Hahn, who has led the fight for a speed up in construction of the Harbor Freeway, hailed the issuance of a call for bids as "a major step forward in providing improved traffic conditions throughout the southern part of the county and a real victory for the motoring public."

AS SOON as the contract has been awarded, construction should proceed at full speed, since the project has been under way since May 14, 1951, and it is now in final rehearsals, and will open a throughway on Aug. 21, 22, and 23.

Now under construction, and rapidly nearing completion, between Century Blvd. and 124th St., the Harbor Freeway serves as the main north-south through traffic artery for the southern part of the County. Section between 92nd St. and Colden Ave. (Century Blvd. for north-bound traffic) was opened Friday to allow crews to build permanent on and off-ramps at 92nd St.

IN PREPARATION for the opening of the Harbor Freeway to 124th St., scheduled for September, Supervisor Hahn won approval for the widening and improvement of El Segundo Blvd. between Avalon Blvd. and Figueroa St., and from Vermont Ave. to Normandie

Avs. to provide adequate roadway for east-west traffic going to and from the freeway.

He pointed out that the Harbor Freeway, with a daily traffic count of 190,000 vehicles, is the second most important freeway in the world. The amount of traffic can be expected to increase as additional sections are opened," he stated, "and that is why it is so important that the freeway be extended as soon as possible to connect up with the major and secondary east-west county and state highways, such as Rosecrans Ave., Compton Blvd., Olive St., Artesia Blvd., and 190th St."

Nadine Nichol In Top Role Of Theater

Cast in the leading role for Gian Carlo Menotti's "The Medium" when it opens next Thursday night at the Chapel Players Theater is Nadine Nichols, popular Torrance singer and actress.

The tragedy in two acts is now in final rehearsals, and will open a throughway on Aug. 21, 22, and 23. It is given on the following Friday and Saturday nights and three more performances the ensuing week of Aug. 21, 22, and 23.

Also cast in the drama is Wes "Mitch" Smith, talented young singer who has been a student of Nadine Nichols. In addition to his important role in "The Medium", Smith will play the lead in a one-act curtain raiser during the evening's production.

Reservations for the performances may be made by calling Don Glah at the Chapel Theater.

ISLAND DOMAIN
The 327 islands which comprise the Fiji colony of Great Britain spread across approximately 100,000 square miles and comprise an important land holding in the southwest Pacific.

Civic Symphony to Present 'Pops' Concert August 24

The South Bay Civic Symphony Orchestra will present its Third Annual Promenade "Pops" Concert on Sunday, Aug. 24 at 3 p.m. under the auspices of the Torrance Recreation Department at the Torrance Park Bandshell. The conductor is Elyse Achle who will present the free program of light and charming music which is so well suited to a pleasant afternoon in the park.

After a successful season last winter, this orchestra was praised by musicians, composers, and impresarios as the finest civic symphony in the Los Angeles area.

SETS NEW MARK
A record string of 42 consecutive flights by Ryan Firebee jet target drones, averaging more than an hour apiece, has been achieved by the 4750th Drone Squadron at Vincent Air Force Base, Yuma, Ariz.

DOLLAR PAINT SALE

THURSDAY — FRIDAY — SATURDAY — AUGUST 7-8-9
BUY ONE GALLON AT REG. PRICE — SECOND GALLON AT —

AMAZING VINYL PLASTIC FOR STUCCO

ONE COAT GIVES AMAZING RESULTS!

ROLL ON A COAT IN 4 HOURS 5 GALLONS DOES THE JOB OVER 75 PASTEL COLORS

3⁹⁸ Gal
6.75 VALUE

WHITE GLOSS ENAMEL \$1

This is an exceptional value at \$4.50 a gallon. Buy the second gallon of Gloss Enamel at only \$1.00.

WHITE HOUSE PAINT

Pure finished oil base. This is a top grade all-weather paint. Buy the second gallon of White House at only \$1.00.

100% RUBBER LATEX

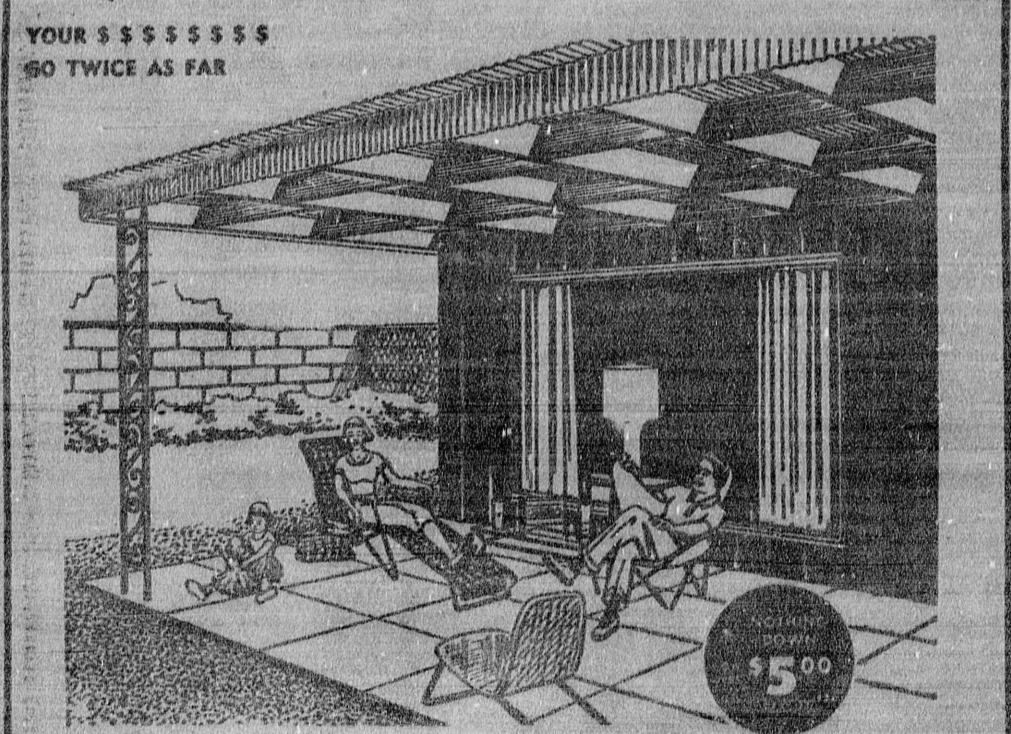
Made exclusively of Dow's Rubber Latex. Dries in 30 minutes to color, scrubable. 1 gallon does the average bedroom. Only \$4.50 gallon. Buy the second gallon at only \$1.00.

VISIT OUR WALLPAPER SALON

\$ \$ \$ \$ \$ \$

MOR-GLO PAINT FACTORY
18937 S. MAIN ST. (between Carson & 190th) DA 4-0015
LOOK FOR THE YELLOW FACTORY BLDG.

1/2 PRICE SALE!



ON YOUR FIBERGLAS PATIO

WE DO CEMENT WORK AT POSITIVELY COST WITH PATIO ROOF WORK LICENSED — INSURED

Factory Clearance
BUY NOW AND **SAVE 1/2**

NO MIDDLE MAN BUY FROM OUR FACTORY

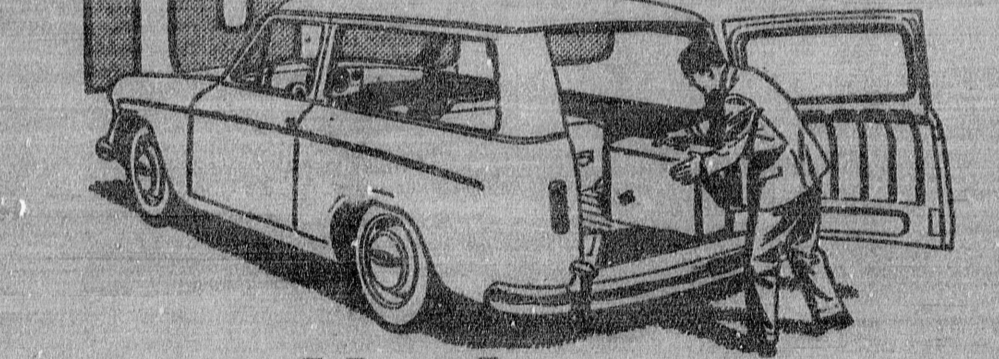
CLIP THIS COUPON OR TELEPHONE RIGHT NOW

FRONTIER 8-1268

PATH ENGINEERING FACTORY & WAREHOUSE
 7500 State Street West, Los Angeles 46, Calif.
 Home and Use Free Estimate Free Service

Name _____
 Address _____
 Phone _____
 City _____

\$1685 imagine a STATION WAGON at this price!

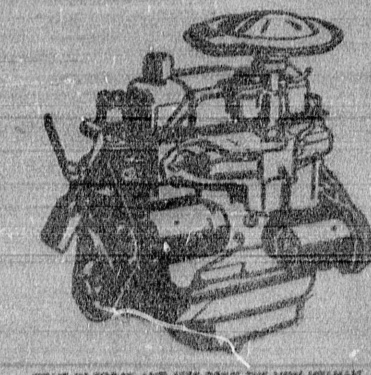


Powered by the NEW HILLMAN ENGINE

Americans are still rubbing their eyes in disbelief. A station wagon for only \$1685? It's true! Nothing in its class can touch the entirely new HILLMAN Station Wagon... not only in price but in power, beauty and performance as well. It's America's big three-in-one value: sleek sedan... sturdy station wagon... and economical enough to be used as a commercial vehicle.

And don't forget that money-saving 30-35 miles per gallon!

You'll be amazed at the "zip" and efficiency of HILLMAN'S new, higher-powered, overhead valve engine—the one imported car of its class with enough passing power to compete in fast traffic!



COME IN TODAY AND TEST DRIVE THE NEW HILLMAN. FOR ITS NEW POWER... LEARN WHY HILLMAN IS AMERICA'S MOST-WANTED IMPORTED CAR...

HILLMAN

SEDANS • CONVERTIBLES • STATION WAGONS

MANHATTAN MOTORS Inc.
2301 Sepulveda Blvd. Manhattan Beach
PHONE: FRONTIER 2-1141
OPEN 9 a.m.-9 p.m. 7 days a week