

Torrance Co. Wins ATC for AG-2 Plane

The Hi-Shear River Tool Company of Torrance announces the award of Type Certificate No. 4920 by the Civil Aeronautics Administration to the Ag-2 Farm and Forest Airplane. Designed and manufactured by the Transland Division of the Company, the Ag-2 is now available for agricultural and forestry service throughout the world.

The Ag-2 was designed under the direction of George S. Wing of Palos Verdes Estates and incorporates the results of extensive research in the aerial applying field. After analyzing the highly complex problems and needs of agricultural aviation and then months of careful evaluation of aircraft size, payload, maneuverability, economy and safety, Transland selected the Ag-2 as the optimum configuration.

The airplane is all-metal, featuring a 600 HP R-1340 engine and features excellent ability, high performance, fine maneuverability, high payload, rugged durability, low operating costs, easy maintenance and exceptional comfort, visibility and safety for the pilot. Flight tests have proven its ability to operate under adverse conditions such as extremes of temperature, short runways or high obstructions which limit conventional aircraft. Actual applying and fire fighting tests have been conducted with great success.

The low-wing configuration features an NACA 64021 modified airfoil equipped with slop ailerons and flaps. This wing provides a maximum lift coefficient about double that of a conventional wing without excessive drag and with superior stability and control. Both fuselage and wing are constructed for minimum maintenance with few castings, forgings, or special extrusions used. Numerous access panels are readily accessible and the fuselage is constructed to insure thorough and easy cleaning. The airplane is corrosion resistant and all large openings, tooling holes, bend reliefs, assembly joints, etc., are closed to completely seal fuselage, wings, control surfaces and empennage.

Two Dispensers: The Ag-2 has a complete and separate system for dispensing solids and another for liquids. Both systems can be controlled singly or simultaneously by the pilot in flight. The 53 cubic foot hopper will hold 2,000 lbs. of low-density solids and up to 3000 lbs. of higher specific gravity materials or fire retardant chemicals and is an integral part of the fuselage—located between the engine firewall and the cockpit. Four separate spray tanks are located two in each inner wing and the two fuel cells are located one in each outer wing. This arrangement provides maximum safety for the pilot since highly toxic chemicals may be carried outside the fuselage area. The full rolling effect of the downwash air in the low winged configuration provides improved crop penetration.

Ag-2 performance enables the carrying of high payloads at low speeds and low operating costs. However, the high reserve engine power combined with excellent airplane maneuverability produces maximum safety on all operations. The airplane can be pulled up steeply without fear of stall, has an excellent rate of roll for quick turns and can glide steeply without gaining excess speed. For instance, the Ag-2 will fly at 80 mph with a full load and flaps down, descend less than 50% engine power, will break ground and clear a 50 foot obstacle in 700 feet with a gross weight of 8000 lbs. at zero wind, and will climb at 950 ft./min. at rated power and a full load. Landing speed at maximum flying weight is 51 mph.

Good Visibility: An additional safety feature is the "right engineer" cockpit which gives maximum visibility both on the ground and in the air. The cockpit is designed to absorb 4000 lbs. in the event of accident, is equipped with an overhead structure and has no equipment or loads mounted behind the pilot.

Although the airplane was designed specifically for agricultural operations, it may be used for a variety of other applications including fire fighting, forest patrol, seeding and

reseeding, fertilization, air search, fire patrol (up to 7 hours cruise in optimum conditions), aerial surveys, supply drops, prospecting, fish stocking, and many more.

It is expected that the Ag-2 will be produced in several versions — two place, single place, open cockpit and closed cockpit. Transland expects this highly specialized form to be used extensively in all countries and climates of the world. Its load carrying capability is greater than any aircraft of comparable size, operating costs are comparably lower than other aircraft and its safety and performance characteristics assure the ac-

Luau to Honor Cavanaugh Wins College Honors

Plans have been completed for a formal reception and Hawaiian Luau to honor Edmund G. (Pat) Brown, Democrat nominee for governor.

The event will be held Aug. 30 at the Polynesian Restaurant, according to Mayor Albert Isen, chairman, representing the Torrance Voters for Brown. Assisting Isen with the arrangements will be Robert Jahn and J. A. Reasley.

Facilities for 1200 guests from the 66th, 67th and 46th assembly district will be available.

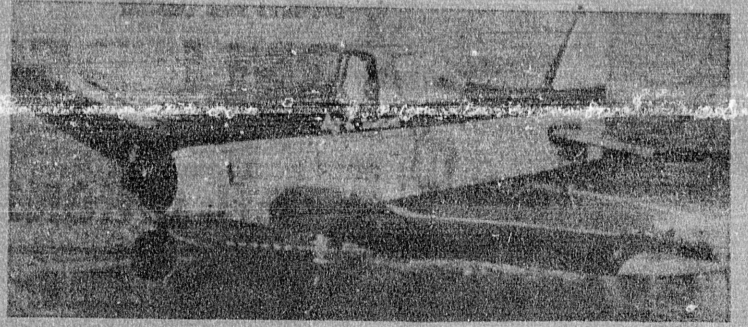
al applicator of a fine new addition to the agricultural field.

Thomas Cavanaugh of Torrance has been named to the Honor Roll at the University of Redlands for achieving a grade average of 3.75 during the spring semester.

To be included among the Honor Roll students for the spring semester it was necessary to earn a grade average of at least 3.5.

At the University of Redlands 4.0 is a perfect average. 3.5 is an A minus, 3.0 is a B and 2.0 is a C.

Cavanaugh resides at 1315 Cranbrook. He is a senior at the University of Redlands, majoring in history.



THE AG-2 SPECIAL utility airplane designed for agricultural and other specialized services. The plane, developed by Transland, a division of Hi-Shear River, Torrance municipal airport, has exceptional flight characteristics and is capable of lifting tremendous loads while maintaining stability at slow flight.

SALE!

GOOD! STAMPS!

ES	10	NO. 300 CANS	\$1
BEANS	6	NO. 2 1/2 CANS	\$1
AIL	5	NO. 300 CANS	\$1
In heavy syrup			
TOMATOES	5	NO. 300 CANS	\$1
ACHES	4	NO. 2 1/2 CANS	\$1
JUICE	4	46-oz. CANS	\$1
JUMBO SIZE			
APPLES	8		8c
Gravenstein			
Crisp tart beauties with smooth white flesh for home-made sauce! Green skin. Rosy cheeks.			
SOUPES	9		9c
CUCUMBERS	3 for 10c		
AVOCADOS	2 for 29c		

Ficnie Brand FROZEN Lemonade	11	6-OZ. CANS	\$1
Priority CHUNK TUNA	4	No. 1/2 PLAT TINS	\$1
Flav-R-Pac BARTLETT PEARS	5	No. 213 CANS	\$1
Helen, in Syrup			
Banquet BONED CHICKEN	3	8-OZ. CANS	\$1
Libby's Frozen MACARONI 'N CHEESE	5	8-OZ. PKGS.	\$1
Progresso TOMATO SAUCE	14	8-OZ. CANS	\$1

SALE

SAVE ON OUR FAMOUS 8-YEAR OLD BOURBON

"OLD GOLD" STRAIGHT WHISKY BOTTLED IN KENTUCKY. Comparable in quality with Bourbons selling at \$4.99. Our price... \$3.29

"ROCKY HILL" BOTTLED IN BOND. Equal in quality to Bourbon selling at \$4.79. Our price... \$3.98

90.4 PROOF GIN

Smooth, Light Ballynaw, Stewart IMPORTED SCOTCH \$3.98

High quality for the market and others \$3.29

Extra Quality, Eastern GOSTZ BEER 6 12-oz. Cans 99c

FOX

QUANTITY RIGHTS RESERVED

TORRANCE — 1321 Post Ave. HAWTHORNE — 105 Hawthorne Blvd.

FOX

BUY BY THE CASE AND SAVE EVEN MORE!

ADAY SATURDAY

THURSDAY

Sunday, July 31, Aug. 1, 2 & 3.

TORRANCE — 1321 Post Ave. HAWTHORNE — 105 Hawthorne Blvd.