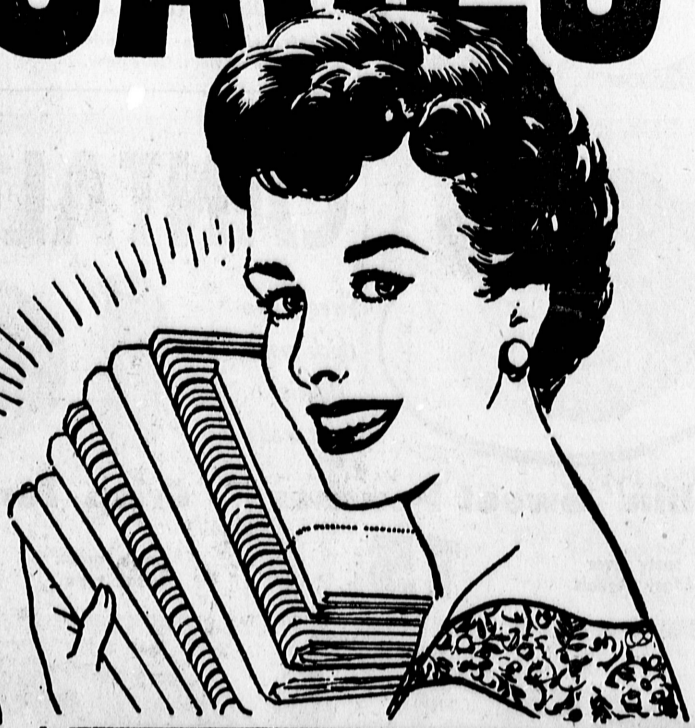
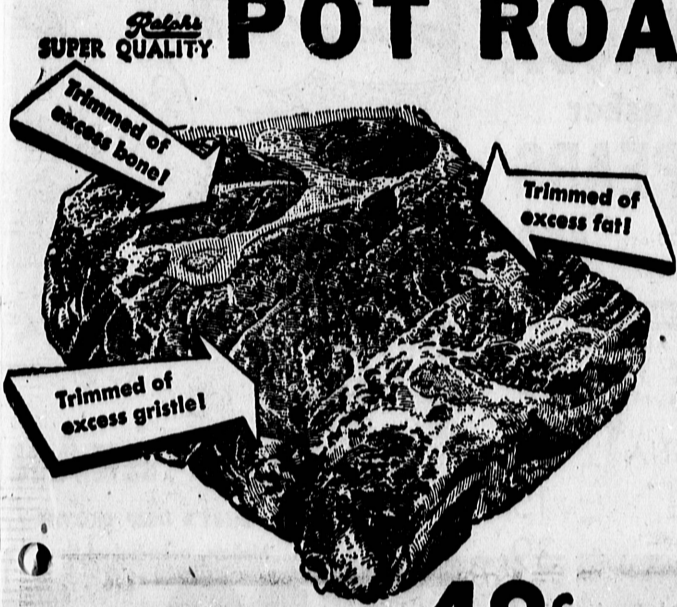


# TS and PILLOW CASES

Yes! Answering thousands of requests from homemakers, world-famous Cannon sheets and pillow cases in snowy white and gay, multiwoven stripes are added to Ralphs Gold Tape Premiums! Both contour and regular . . . both twin and double bed . . . and FREE, starting at just 6 \$20 gold-tape packets for the white twin-size. Save all ways at Ralphs!



## Chuck POT ROAST U.S.D.A. CHOICE GRADE



# 45<sup>c</sup>

7-Bone Roast Lb. . . . . **49<sup>c</sup>** Round Bone Roast Lb. **51<sup>c</sup>**

FRESHLY MADE LEAN  
**Ground Beef** Lb. . . . . **49<sup>c</sup>** **Ground Shoulder** Lb. **69<sup>c</sup>** **Ground Round** Lb. . . . . **79<sup>c</sup>**

**Smoked Pork Loin**  
WHOLE OR HALF Lb. . . . . **79<sup>c</sup>** CENTER CUT CHOPS Lb. . . . . **89<sup>c</sup>**

FRESH DRESSED **Rabbits** FRYING SIZE Lb. . . . . **59<sup>c</sup>**

SWIFT'S PREMIUM **Brown 'n Serve Sausage** 8-oz. Pkg. . . . . **53<sup>c</sup>**  
PURNELL'S PRIDE FROZEN U.S.D.A. INSPECTED **Chicken Livers** 8-oz. Pkg. **49<sup>c</sup>**  
**Fresh Barracuda** WHOLE OR HALF SLICED Lb. **35<sup>c</sup>** Lb. . . . . **27<sup>c</sup>**

OH BOY FROZEN **Pizza Pie**  
WITH CHEESE 8-oz. . . . . **39<sup>c</sup>** WITH SAUSAGE 8-oz. . . . . **49<sup>c</sup>**

Vitale FROZEN **MINISTRONE SOUP** "a meal in a bowl!" 10 1/4-oz. Can. **19<sup>c</sup>**

FRESH FACT FROZEN FORDHOOK **Lima Beans** 2 10-oz. Pkgs. **29<sup>c</sup>**

**All Detergent** FOR AUTOMATIC WASHERS 10-lb. . . . . **\$2.45** Plus 10c Tax

**Wisk Liquid Detergent** Quart Marked "9c Off" Price 73c Less 6c SALE PRICE . . . . . **65<sup>c</sup>** Plus 3c Tax

MEET **GIL HODGES** of the **L.A. DODGERS,** at **Ralphs** **SOUTH BAY STORE** **SATURDAY, JUNE 7, NOON TO 1 P.M.** He will give his personal check for fifty-nine cents to everyone buying the new hair preparation for men: **VALCREAM . . . 59<sup>c</sup>**

**BEETS** LIBBY'S Sliced 1-lb. Jar **9<sup>c</sup>**

**BABY FOOD** GERBER'S Strained 4 1/2-oz. Can **5<sup>c</sup>**  
Junior, 6 1/2-oz. Can **7<sup>c</sup>**

**BABY FOOD** BEECH-NUT Strained 4 3/4-oz. Glass Jar **5<sup>c</sup>**

