

## 'Have Grease Paint—Will Travel' Is New Shaw Motto

Local residents who attended Torrance High School's drama productions last year may have seen a small, curly headed thespian named Eddie Shaw, who was named best actor, thespian, producer, and director.

If they had happened to watch Jack Benny's program last Sunday night, they would have seen Shaw again, but in case they missed him, he'll be on the "Bachelor Father" program again tonight.

After graduating from Torrance High School last year, he took a job as mail-boy at CBS Television City in Hollywood, and got his first break last Sunday.

### Played Messenger

Shaw played the messenger boy who delivered Ralph Cramden's (Jack Benny) bowling ball in the "Honeymooners" skit on Jack's program.

Although he is only 19, Eddie is no newcomer to acting. He trod the board in New York on a variety of radio shows before coming to California five years ago.

While attending Torrance High School, he wrote, directed, produced and acted in a number of high school productions.

Long interested in acting, Eddie was twice national president of the Thespian Society. Hoping to break into show business, Eddie took the job as mail-boy at CBS in July, 1957. He goes to Los Angeles City College at night where he studies—you guessed it—drama!

### Right Step

"I figured getting inside Television City in any capacity was a step in the right direction," Eddie confessed with a small grin.

Apparently he figured it right, because when the part of a messenger came up on the "Benny Show" Eddie was in on the ground floor.

And, Eddie is not concerned over being permanently type-cast. Next Sunday he can be seen in a different role in the CBS Television "Bachelor Father" series from 7:30-8 p.m., PST).

**Dons Tuxedo**  
In this show, Eddie plays

the junior counterpart of Bentley Gregg (John Forsythe), playboy extraordinary. The role calls for a tuxedo instead of a messenger's uniform, as Eddie takes Bentley's niece, Kelly (Noreen Corcoran) on her first grown-up date.

Eddie, a lad with a sharp and ready wit, said he liked his job as a mail-boy, but was willing to trade anytime for an acting assignment.

As he put it: "Have grease paint—will travel!"

## South Bay Press Club Plans Meeting at University Club

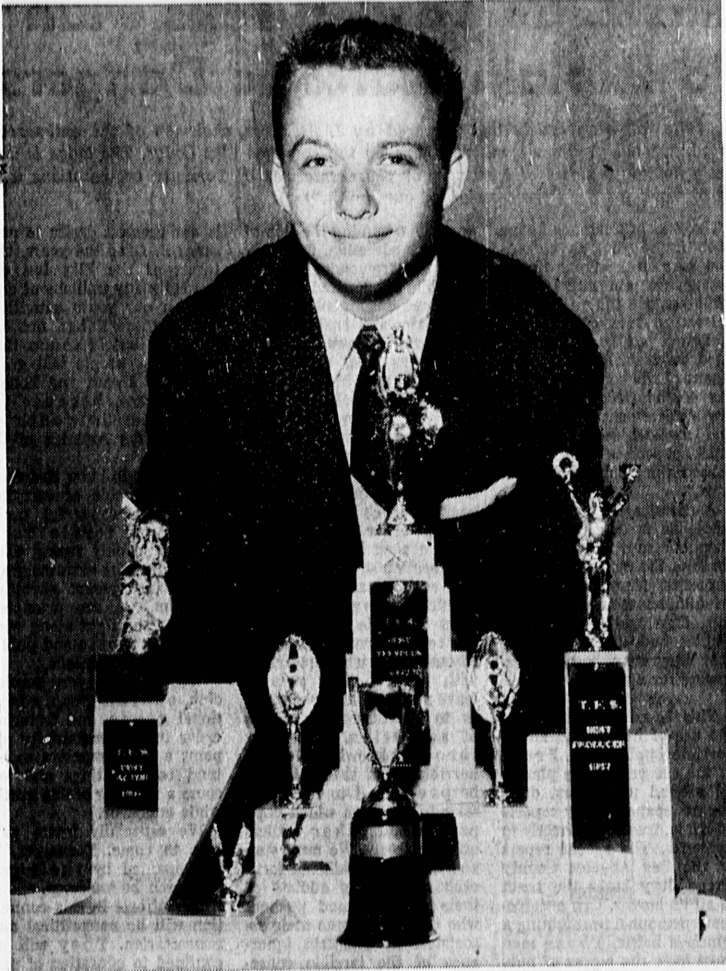
Members of the South Bay Press Club will meet in Long Beach Friday in the Campus Room of the University Club, 6:30 p.m.

The more than 100 members of the newly formed organization are expected to be in attendance, according to Stuart Robertson, president.

Staff members of the Compton Herald-American are hosting the affair which will provide a buffet dinner and entertainment for newspapermen

in the South Bay area. Bill McCullough, executive vice president of the press club, is general chairman of the monthly dinner meeting. Assisting him in welcoming guests will be Jack Cleland, managing editor of the Herald-American newspapers.

Working members of the press in the southern part of Los Angeles County are invited to join the club which maintains headquarters in the Hollywood Riviera Club.



**HAPPY ACTOR . . . Eddie Shaw was happy last June when he won the best thespian, actor, producer, and director awards at Torrance High School. He was even happier last week as he made his first TV appearance on the Jack Benny show, and will be seen again Sunday on "Bachelor Father."** (Herald Photo)

## Groundbreaking Set Monday for Marymount Aud

Groundbreaking ceremonies for Marymount Palos Verdes new school auditorium were held Monday on site at 30800 Palos Verdes Drive East, school officials announced this week.

Rev. Doria Grimard, school chaplain, officiated at the ceremonies and blessed the site of the building which will be located adjacent to the present high school classrooms. Marymount's student body witnessed the ceremonies. Class representatives of the Student Council followed Rev. Grimard in turning the sod at the site of the new building.

The new building is a combination auditorium and social hall, officials said. Plans include dressing rooms, prop storage rooms, kitchen and laundry facilities. Of special note is the social room complete with fireplace and sliding glass doors leading onto a patio. The kitchen is situated between this social room and the auditorium so that service may be made into either room with a minimum of effort.

The auditorium will accommodate 400 persons. Sliding glass doors and large areas of Palos Verdes stone are features of the exterior of the auditorium. Architects are Comeau and Brooks, A.I.A.

## Fillers Fast Way to Ranks Of the Pros

"The 'filler' is the place for the beginner, the amateur, to become professional," Redondo Beach writer Edith Battles told Southwest Manuscripters Friday night at a meeting at Clark Stadium, 861 Valley Dr., Hermosa Beach.

Speaking on "How to Pick Up Small Checks," Mrs. Battles listed three types of short features which, when professionally treated, find a ready market: (1) "How to" articles, particularly those dealing with uses for contemporary materials such as plastics; (2) light verse, in which even a "heavy idea" can be made acceptable by "light" treatment; and (3) anecdotes, as illustrated by the Reader's Digest feature "Life in These United States."

Her own published work in "Reader's Digest," "Saturday Evening Post," "Quote," "Westways," "American Girl," "American Baby," "Popular Mechanics," and other magazines gave credence to Mrs. Battles' fact-filled talk. She was presented by Catherine Fitz Bolton, program chairman.

## Lutherans to Honor New Parish Worker

### MISS JANET MYREN

Miss Janet Myren, daughter of Mr. and Mrs. Evend Myren, will be consecrated as a parish worker at Christ the King Lutheran Church at 11 a.m. services this morning by the Rev. Maynard V. Midthun.

The first member of the local congregation to go until fulltime service, she will be presented by Miss Rose Mary Ulland, parish worker at the church. Participating on behalf of the congregation will be Mike Bankson, president of the board of deacons, and Mrs. Bill Sands, superintendent of the Sunday school.

Miss Myren graduated from Inglewood High School and received her college education at Pepperdine and El Camino Colleges. While at Pepperdine, she

was a member of Kappa Kappa Sorority and was active in several offices and organizations.

The new parish worker has been active in youth work throughout the Los Angeles area. Since the organization of Christ the King Lutheran Church, she has given her leadership and service as Sunday school teacher, Sunday school music director, Junior and Senior Luther League advisor and senior choir director.

Miss Myren has served as recreational director at the Jewish Day Camp and as day camp director with the Torrance Recreation Department. For two and a half years she taught physical education in private Catholic schools.

On Sunday, Feb. 9, Miss Myren will be installed as parish worker of Trinity Lutheran Church, San Pedro, by the pastor, Rev. Les Hoffman.

## Adult School Class Slated In Spanish

A conversational Spanish class for adults is open to beginners and advanced students in the Torrance Evening High School, located at 2200 W. Carson St.

The beginning class meets on Monday and Wednesdays in Room 207 from 7 to 8:30 p.m.; the advanced class also meets on Mondays and Wednesdays in Room 207, from 8:30 to 10 p.m. Instructor will be Robert Griffin.

The beginning Spanish class is an introduction to conversational Spanish with emphasis upon basic vocabulary, grammatical construction, correct pronunciation and diction. No Spanish background is required.

The advanced class is a continuation of the beginning class with continued development of the beginning skills and added emphasis on local and Mexican expressions. The advanced section is open to those having completed the beginning semester or who have some knowledge of spoken Spanish.

For additional information concerning these classes or other classes telephone the Adult Education Office.

## Coordinating Council to Change Date

The Torrance coordinating council meeting scheduled for Wednesday has been canceled, according to Dr. Warren Low, council president.

Low said the cancellation was necessary because of conflict of dates.

Los Angeles District Attorney, Judge William McKesson, was scheduled as the speaker of the meeting which was called to discuss the problems of youth.

## New Church Finds Home

The newly organized Religious Science Group of Torrance, organized last week, will meet in the auditorium of the Torrance YWCA, 2320 W. Carson St., for services tonight at 7:30 p.m., according to the Rev. Ray Anger, minister in charge.

The group met last week in a local home but will hold regular services in the YWCA on Sunday evenings, Rev. Anger said. The public is invited to the service when Rev. Anger will discuss "The Key to the Abundant Life."

## Colleges to Give Program Here Feb. 18

Life at college, entrance requirements and course offerings will be explained to interested parents and students of Torrance High School at the THS College Advisement Night scheduled for Feb. 18.

Representatives from five colleges will meet with parents in the Torrance High School Auditorium at 7:45 p.m., to discuss the junior college approach to education, the advantages of the small liberal arts colleges, the advantages of the large university, and the advantages of the state college.

Small group meetings will follow the general meeting. These smaller meetings are scheduled to allow parents an opportunity to discuss individual problems with the college personnel present. W. Holmes Smith of El Camino College; John Steinbough of the University of Southern California; Gann Smith of Occidental College; Mrs. Katherine Walker of the University of California at Los Angeles, and C. R. Bergland, of Long Beach State College will explain their colleges at the meetings.

College Advisement Night, a phase of the counseling and guidance program at Torrance High School, has evolved under the planning of the Torrance High School Administrative staff. Willard Morgan, THS boys' adviser, is the planning chairman for this event. Parents of all Torrance Unified School District students are invited to attend this College Advisement Night.

### COAL SUPPLY

North America has 58 per cent of the world's known supply of coal. Asia has 27 per cent Europe 10 per cent, and the remainder of the world has the remaining 5 per cent.

### INCOME TAX SERVICE

• STATE • FEDERAL  
• PERSONAL • BUSINESS

PHONE  
**FA 8-7600**

Eves. Call DA 4-4150

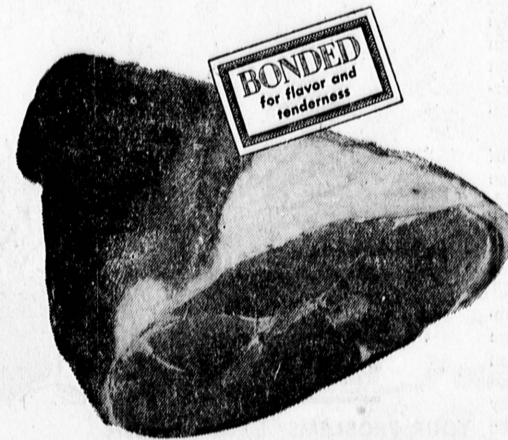
Prompt Efficient Courteous

### ESCROW SERVICE

Arrow Escrow Co.

1620 CRAVENS AVE.—TORRANCE  
PHONE FA 8-3662

Escrows Taken Evenings and Holidays by Appointment  
Joe Mongini, President



COAST 'OLE SMOKEY—LARGE PARTS TO BAKE

**SMOKED Ham** Shank Portion

CENTER CUT HAM SLICES . . . 98¢

*Jim Dandy*  
*First-of-the Week*  
*Ham Sale!*

YOU WILL ENJOY THE EXQUISITE FLAVOR OF THESE COAST OLE SMOKEY TEMPTING HAMS . . . BURSTING WITH SUCCULENT GOODNESS AND TENDERNESS AND THEY CAN BE PREPARED IN SO MANY MOUTH-WATERING WAYS . . . WHEREVER AND WHENEVER SERVED, HAM FILLS THE BILL.

**45¢** LB.

WHOLE OR SHANK HALF HAMS . . . . . 53¢

JIM DANDY . . . HICKORY SMOKED . . . LEAN TENDER THICK OR REGULAR SLICED  
**SLICED BACON 69¢**

**VELVEETA** 2-lb. Loaf **69¢**

**NIBLETS** 12-OZ. CANS **2 FOR 27¢**

DOWNYFLAKE FROZEN WAFFLES . . . . . 6 Pack 17¢

**Butter Nut Coffee** BUTTERNUT COFFEE . . . 93¢

4 FISHERMEN FROZEN FISHSTICKS . . . 8-oz. 37¢

CREAM IT WITH CREAM—4-oz. . . . 31¢

### JIM DANDY MORNING FRESH PRODUCE

LARGE FRESH HEADS—SNOW WHITE **CAULIFLOWER . . . . . 10¢ ea.**

FRESH, TENDER, NORTHERN ICE PACK **BROCCOLI . . . . . 10¢ lb.**

FANCY, FRESH NORTHERN—BIG 10-OZ. CUP **BRUSSEL SPROUTS.. 19¢**

NOW! SPONGE FIBERS—150 COUNT **ZEE TOWELS 19¢**

CHIFFON FACIAL TISSUES . . . 4c OFF DEAL

Jumbo Box of 400 White, Yellow, Pink Price Includes 4c Off **23¢**

Valuable Jim Dandy Coupon

GOOD FOR **25¢ OFF**

on the purchase of one dozen cans  
**GERBERS BABY FOOD**

COUPON VOID AFTER FEB. 5th, 1958  
LIMIT ONE COUPON PER FAMILY

PRICES EFFECTIVE . . .  
MON., TUES., WED.—FEB. 3, 4, 5

*Jim Dandy*  
DIVISION OF LUCKY STORES, INC.

Limit rights reserved—  
Sales tax added to taxable items

HERMOSA BEACH . . . REDONDO . . . TORRANCE . . . BELL . . . LONG BEACH  
WESTCHESTER . . . . . INGLEWOOD . . . . . LOMITA, HARBOR CITY AREA