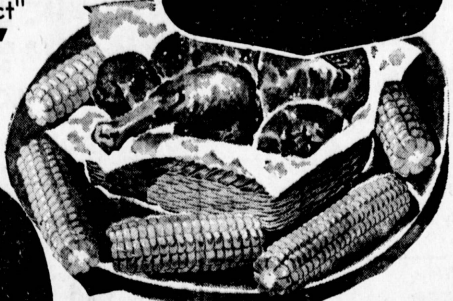


# RYERS FOOD GIANT

Famous "Banquet Perfect" **GRADE "A" RYERS**



## COUNTRY CHICKEN CASSEROLE

Sprinkle your spotlessly clean (they come that way at Food Giant) 2 to 3-lb. fryer with a mixture of 1/2 cup flour, 1/2 tsp. salt, 1/4 tsp. pepper. Brown in oil in heavy skillet. Remove, and in same pan, saute lightly 1/2 cup chopped onions, 1/4 cup chopped green pepper, 1 clove minced garlic. Add 3 sliced carrots, 3 stalks sliced celery, two 8-oz. cans tomato sauce, 1/4 tsp. basil. Simmer 10 min. Put 1 1/2 cups elbow macaroni in lightly greased casserole, and chicken, cover with sauce mixture. Bake in 325 deg. oven for 1 1/2 hrs., and remember this...

## DOUBLE MONEY GUARANTEE

Your chicken must satisfy you, or double your money back. Buy it. Try it. U-m-m-m.

# 29

FRESH DRESSED • Same Day Ranch to You

## Caponette Roasting CHICKEN

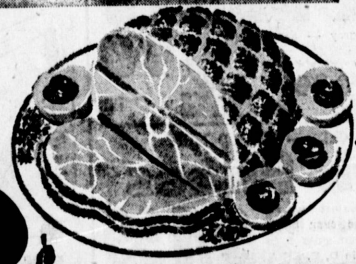
These cornish cross whole body roasters are the result of breeding, feeding. They have short thick legs, broad breasts and out-of-this-world flavor. Try them on your barbecue this week end. Delicious hot or cold.

# 39

3 1/2 to 5-lb. Average



## Wilson's "Tender Made" Fully Cooked HAMS



# 53

Economy here because there's practically no cooking shrink. Just slice and heat, or bake with our favorite glaze. Superb either hot or cold.

Whole or Full Shank Half

## FARMER JOHN SLICED BACON

This is the quality bacon with that delicious hickory smoked flavor. Plenty of lean for flavor.

# 55

## OL' SMOKEY SKINLESS LINK SAUSAGE

Prepared from lean eastern pork, seasoned with fine spices. Make Dad get up and prepare a pancake breakfast this Sunday.

# 2 45

## SHIP AHoy BRAND SKINLESS & BONELESS FILLET OF SOLE

Come packed in Flex-Vac package so you can keep 'em easily in your refrigerator. Buy several so you have 'em when you want 'em. 12-oz. package.

# 55

## OCEAN SCALLOPS

Bread and deep fry for good nutrition and good eating. 1-lb. roll.

# 59

JUST EAT & EAT FROZEN PIES \$1

## NET PICKLES Full Quart 49

## Ripe Olives Tall No. 1 Can 25

## Marshmallows 10-oz. Pkg. 19

## WASHING MACHINERY • Absorbent TOWELS With Free Holder 59

## HOUSEHOLD • Heavy-Duty • Heavy-Duty MEAT 12-oz. Can 39

## CHARCOAL BRIQUETS SURE FIRE 10-lb. Bag 69

## SUPPER CLUB Shoestring Potatoes 3 Reg. Cans 29

## C.H.B. • Zesty SWEET RELISH Large 22-oz. Jar 29

## GERBER • Strained BABY FOOD 3 4 1/2-oz. Cans 31

ROYAL VANILLA PUDDINGS 3 Reg. Boxes 29  
SUNSHINE HI HO CRACKERS 1-lb. Box 35  
MAZOLA SALAD OIL Gal. 1.99  
ALUMINUM FOIL REYNOLDS WRAP 12"x75" Economy Roll 83

**WESTERN** At Imperial in Los Angeles  
SOUTH TORRANCE way 101 at Hawthorne Blvd.

## Crooker Gives Talk in Atlanta

William C. Crooker, senior weight engineer, North American Aviation Corp., delivered a technical paper at the National Conference of the Society of Aeronautical Weight Engineers in Atlanta Monday. His topic was "Aircraft Fuel System Weight Estimation for Tri-Sonic Era."

Crooker is a 1950 graduate of the University of Southern California with a degree in Mechanical Engineering. He has been employed by North American for the past eight years and lives with his wife and two children at 809 Cranbrook.

Approximately 200 aircraft engineers representing companies in the United States, Great Britain, Canada, Mexico, and other countries attended the conference in Atlanta.

### APPOINTED

Mrs. Joseph Premeaux of Gamma Psi Chapter, Epsilon Sigma Alpha was named convention chairman for the 1960 sorority convention to be held in Las Vegas.



EXTENDS WELCOME... Shaking hands with Glenn Koger (left), chairman of the Welfare Federation Harbor Area Board of the Community Chest, at the board's first regular meeting of the year, held recently at Homer Toberman Settlement House, are, left to right: Mrs. A. E. Kurz, James P. Becker, second vice-chairman, and George Vico.

## RELIABLE



EACH ACCOUNT INSURED  
EARNINGS PAID FOUR TIMES PER YEAR  
CURRENT ANNUAL RATE

## MARINA FEDERAL SAVINGS

WESTCHESTER TORRANCE

## Torrance, Lomita Men Pace Bar Examination

Two Torrance area residents were among the 281 persons to pass the 1959 spring bar examinations. The Committee of Bar Examiners of the State Bar announced this week.

To be certified in ceremonies in Los Angeles on June 10 are Ralph E. Brogdon Jr., 4802 Greenmeadows Ave., Torrance, and Kenneth R. McCann, 1878 W. 261st St., Lomita.

## Borge May Move in Any Direction, Director Says

Victor Borge's fast-paced show can — and undoubtedly will — move in any one (or possibly all) of 71 different directions at the drop of a demisiquaver, and/or: the spur of the musical moment when it opens the Greek Theatre's summer season at 8:30 Monday night, June 15.

For the hilarious Borge not only will have a baton in addition, with which to conduct the 70-piece Greek Theatre Symphony Orchestra that will accompany him. James A. Doolittle, general director of the Griffith Park amphitheatre, declares: "Frankly, we don't know what Mr. Borge will do, but we're sure he'll keep us posted from time to time!"

only, from Monday, June 15, through Sunday, June 21, to be followed by Harry Belafonte, who opens Monday, June 29, for three weeks.

## Two Local Students Get SC Honors

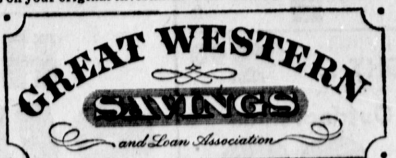
William A. Whittington, 1230 Hickory Ave., won the Society of American Military Engineers medal Monday at the annual awards luncheon of the Air Force ROTC at the University of Southern California. Whittington is a cadet lieutenant colonel in the corps.

The award is presented annually in recognition of outstanding academic achievement and meritorious scholastic endeavor and for being the most promising senior AF-ROTC cadet. James Davis, 3146 W. 180th Place, received a Chicago Tribune silver medal. This is given each year to the outstanding air science cadet in the first classes who has demonstrated his ability in military achievement, scholastic attainment and character.



## figure it out for yourself

You don't have to be a whiz at arithmetic to understand that 4% is one-third more than 3%. And at Great Western, your money currently earns 4% a year — the highest rate you can get on insured savings. Another thing, that high interest is compounded or paid — not just once a year, or even twice a year — but four times a year. Within three months you are earning interest on your interest, as well as on your original investment. That makes your savings add up in a hurry. You can open your Great Western account in no time at all. Mail us your check, money order or your present passbook — or just stop in at the nearest Great Western office and start your account.



FREE PARKING AT ALL BRANCHES  
SOUTH BAY (Lawndale) 16818 Hawthorne Blvd. FRontier 3-1894  
GARDENA 15112 S. Western Ave. DAvis 9-4107  
OTHER OFFICES: Downtown Los Angeles, Crenshaw, Lakewood Center, Manchester-Vermont

## BRAKES RELINED

- All Cars and 1/2 Ton Pickup to \$9.50
- BEST GRADE BONDED LININGS
- 20,000-MILE GUARANTEE
- FACTORY TO CONSUMER
- LOS ANGELES' BEST EQUIPPED BRAKE SHOP
- FACTORY TRAINED MECHANICS
- 12 YEARS IN THIS LOCATION
- IN BUSINESS SINCE 1928
- WRITTEN GUARANTEE

Automatic TRANSMISSION EXCHANGE  
Guaranteed \$89.95  
10,000 Miles

Rebuilt to Highest Standards  
MOTOR TUNE-UP V-8-\$5.95 6 Cyl.-\$4.95  
Loan Cars Free When Available  
**ANCHOR GARAGE**  
Open 'Til 7 P.M. Daily including Sunday  
1312 W. ANAHEIM  
Near Figueroa WILMINGTON  
Terminal 4-8245