

### Explorer Post 728X

By subjecting themselves to the rigors of Air Force survival training in the cold mountainous region near Reno,

Nev., 11 Explorer Scouts from Explorer Post 728X, accompanied by their leader, Herman Boodman, were the recipients of Department of the Air Force training certificates

by satisfactorily completing the Air Explorer Scout Encampment along with some 100 other Explorers under training given by the 3635th Flying Training Group (Advanced), Stead AFB, Nevada, over the Easter week holidays. Arriving Sunday by bus at the State building in Reno, the local contingent was assigned an Air Force instructor, toured the display building, checked equipment, set up camp and received the survival lecture. Early morning found them in a convoy and a 60-mile snowy route to the training area, where they constructed

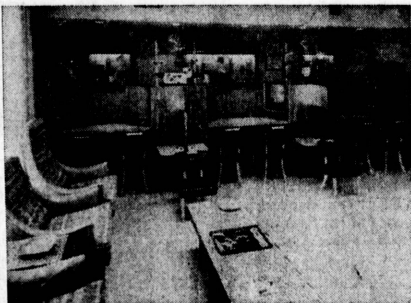
TORRANCE HERALD

APRIL 23, 1959 Twenty-nine

camp and were issued military C-rations. The rest of the day was spent in further camp construction utilizing Air Force tepees, in fire building (since the temperature dropped to 15 during the night), camp sanitation, campfire discussion, and forest procedures.

WEDNESDAY featured hunting, stalking, fishing, skinning, and the actual preparation of rabbits in rock ovens. Also, information was gained on plant foods. Afterwards, a helicopter and snow "weasel" demonstration took place. A 12-mile mountaineering jaunt followed during which training was given in navigation and

map reading, trail techniques and trail discipline. Instructions in signaling and signal fires, mountaineering, traps and snares, and cooking methods comprised Thursday's instructions, with Friday devoted to preparing for the return jaunt just as the snow was starting to melt, graduation and departure from Reno for the bus trip back to Los Angeles and Torrance. Local Explorers, in addition to Mr. Boodman, who participated, were Gene Anderson, Randy Blair, Donny Christensen, David Cooper, Larry Hendricson, J. J. Henry, Bob Murphy, Ken Neal, Gary Olson, Ken Smith and Dennis Albright.

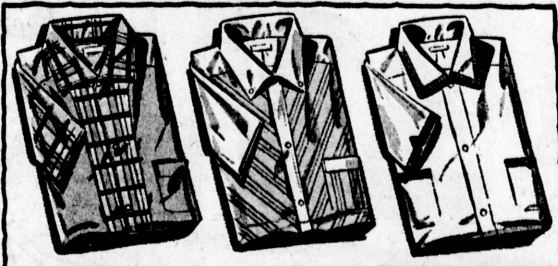


OPTICAL STORE OPENS... Opening its doors recently at 4010 Sepulveda Blvd. was the eighteenth Superior Optical Co. store in Southern California. Under the management of Roland Manis, dispensing optician, the store's eyeframe bar offers 670 different eyeframe styles.



Ship and Travel Santa Fe  
"All the Way"

PRICES DRASTICALLY REDUCED  
on sport shirts



Short sleeves, all sizes \$1.89  
...all colors  
Values to \$3.98

DOWN COME PRICES  
ON MEN'S SUITS

30-60-90  
Day  
Charge  
Accounts  
Invited

All Wool Gabardines  
All Colors — All Sizes  
All Wool Flannels  
All Wool Worsteds

\$39.95

No  
Interest  
or  
Carrying  
Charges

In Torrance It's  
**SAM LEVY**

DEPARTMENT STORE

1311 SARTORI

Downtown Torrance

SINCE 1919

IN THE WEST...

**Ford's for the business**

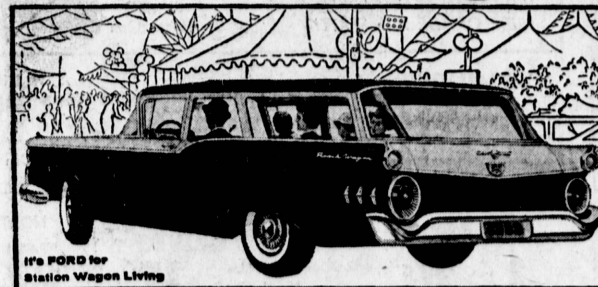


When it's a Ford, it's a pleasure car that gives you the economies of the business man's personal transportation. Custom 300 Tudor Sedan... The best thing that ever happened to an expensive account or to a modest family budget. In a lot of Ford families, this sedan is the perfect companion to a Ranch Wagon.

Ranch Wagon... the thriftest 2-door wagon going. Wagons by Ford make getting there half the fun of any outing.

Maybe you don't buy a car very often. But we know how much you'll enjoy your new Ford. And the pleasant experience of dealing locally! In fact, we'll make it worth your while to become our steady customer.

...of having fun!



It's FORD for Station Wagon Living

**VEL'S FORD SALES COMPANY**

FAirfax 8-5014

1420 Cabrillo Ave.

Torrance

**Newberrys**

**BARGAINS ARE OUR BUSINESS**

**APRIL SHOWER OF BARGAINS**

**DRIP DRY COTTON SHIRT**

2 for \$3.00

Classic blouses in sleeveless, man tailored designs, in plaids or stripes. Tone on tone prints in beautiful new colors. Some dri-don finish. All cool, comfortable and so easy to care for—a truly beautiful buy.

**COTTON PLAY SUITS**

Darling dirndl styles with elastic waistlines and legs. Sheen gabardines, poplins, woven ginghams. Solids and prints. Sizes 3 to 14. **88¢**

**LADIES' SKIMMER PUMPS**

Sizes 4½ to 9. Wide selection of styles and colors. **\$1.99**

**LADIES' BULKY KNIT SWEATERS**

Cardigan style in colors and white. Washable. Sizes 34 to 40. **\$2.98**

**BOYS' SPORT SHIRTS**

Sanforized for permanent fit. Full cut check material with solid color trim. Sizes 6 to 16. Reg. \$1.27. **99¢**

**DISH CLOTHS**

Premium offer! Laurel locknit. Reg. 6 for 49¢. price 10¢ each. **6 for 49¢**

**PLASTIC SALAD SET**

7-piece sparkling salad set, includes sturdy bowl, 4 individual bowls and 2 piece serving tongs. Reg. \$1.79. **\$1.00 Set**

**TROUSER GREASER**

Eliminates ironing! Trousers dry and crease on line. Adjusts for men's and boy's sizes. Reg. 59¢ pair. **2 Pairs \$1.00**

**ELECTRIC PERCOLATORS**

Special buy of automatic coffee makers! Coppertone aluminum, a product of West-Bend. Brews 6 to 8 cups of perfect coffee. Guaranteed. Reg. \$9.98. **\$6.99**

**LET'S PLAY BALL!**

Come and see our outstanding selection of balls, bats and gloves. See this buy. Spaulding ball gloves. Reg. \$8.95. **\$4.77**

**250 PAPER NAPKINS**

Large 13½x13 white napkins. Sturdy quality. Package of 250 at this low price. Reg. 39¢. **3 for \$1.00**

**PLASTIC LAUNDRY BASKETS**

Handy oval baskets. So light to carry, in smooth, unbreakable plastic. Open work sides give ventilation for clothes. Fits in your laundry cart if desired. Solid bottom keeps cloths clean. Gay colors. Reg. \$1.29. **88¢ Each**

**NEW GOLDEN VIGORO**

Complete lawn food, a product of Swift and Co. Won't burn. Feeds longer. Reg. \$3.98. **\$2.88**

**GARDEN HOSE**

75 ft. 100% durable vinyl plastic. Top quality full flow, all brass couplings. 8 year guarantee. Reg. \$3.98. **\$2.88**

**CHEMILLE BEDSPREADS**

Carefree bedspreads, plus decorator beauty. Twin and full sizes in new colors. Reg. \$4.98. **\$3.98**

**CANNON BLANKETS**

Beautiful modern colors, loomed for warmth without weight. Non-allergic and mothproof. Reg. \$4.98. **\$3.77**

**BATH TOWELS**

Soft, fluffy towels to compliment your bathroom color scheme. 22x46. Reg. \$1.59. **99¢**

**HAND TOWELS**

Special buy at this thrifty price. Slight irregular. Reg. 59¢. **3 for \$1.00**

**COTTON PRINT POPOVER**

2 for \$1.00

Cool, sleeveless blouse to wear with everything—shorts, slacks, skirts. Smart printed cotton in assorted colors. **\$2.38**



**NEWBERRY FABRIC BARGAINS**

**DRIP 'N' DRY**

36" high style prints, assorted cottons, print and solid color percales. Irregulars. Reg. 39¢ yd. **3 Yds. \$1.00**

**NYLON DOTTED SWISS**

40" permanent organdy finish, washable colors for pretty dresses. Reg. 79¢ yd. **63" Yd. \$1.00**

**QUADRIGA CLOTH**

Needleleized fine quality prints and stripes. Guaranteed fast colors. Reg. 48¢ yd. **33" Yd. \$1.00**



**NEW JAMAICA SHORTS**

**\$1.00**

Plaids, printed stripes, paisleys, checks, solids. Sheen and woven cottons in many styles—some with belts. Sizes 10-18.

**J. J. Newberry co. 1275 SARTORI - DOWNTOWN TORRANCE**

Open Friday, Saturday and Monday Nights Until 9 P.M.