

OPEN HOUSE SCHEDULE FOR SCHOOLS LISTED

Open house schedules at the city's elementary and secondary schools were announced by school officials this week.

Scholarship Semifinalists Are Named

Nine local high school students were named this week as semifinalists for the California State Scholarships, based on the scholastic aptitude test of the College Entrance Examination Board.

Torrance High School students who made the semifinals include: John Bentwood, Michael Mullen, Carla Osterland, Jackie Ramsley, and Madeline Wayt. In the running from North High are: Howard Borer, Gerald Hickman, Linda Jordan, and David Klemp.

Final award winners will be selected by the scholarship Commission following evaluation of the students' transcripts of academic work taken in high school.

Perry Elementary School will head the list with an open house program at 8 p.m. today.

North High School's annual science fair will open Monday and continue through Tuesday.

Scheduling open house programs Tuesday evening, April 28 are the Carr, Flavian, Mad-Elementary schools.

The Meadow Park, Steele, and Anza schools will hold open the following evening, Wednesday, April 29.

The Newton Elementary School science fair will be held Wednesday afternoon, April 29 and again Thursday, April 30. Both sessions are scheduled from 1:30 to 4:30 p.m.

Also receiving visitors on Thursday, April 30, will be the Arlington and Hillside Schools. The primary section is scheduled for visitors beginning at 7:30 p.m. and the upper section at 8:15 p.m. at Arlington.

Calle Mayor will be open on Tuesday, May 12, from 7:30 p.m., and the Fern-Greenwood schools on Thursday, May 21.

**FIAT - GMC TRUCKS
CADILLAC - OLDSMOBILE**
AUTHORIZED DEALER
SALES AND SERVICE

Cecil L. Thomas & Sons
Terminal 3-5291 PACIFIC at FOURTH San Pedro

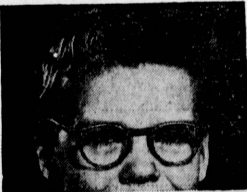
**RE-BUILD
RE-MODEL
RE-DECORATE**

So Easy with a Low-Cost
**FHA TITLE I LOAN
FROM CITIZENS**

Why wait? Get started now with a sparkling new paint job for your home...that new bathroom, playroom or kitchen you've always wanted...new screens or insulation, car port or fence. Ask for a low-cost Citizens FHA Title I Loan. You may borrow up to \$3500, and on loans of more than \$2000, you may take up to 5 years to repay. No down payment required. Visit your nearest Citizens office today!

CITIZENS NATIONAL BANK

South Bay Branch, 1701 So. Elena Ave., Redondo Beach
John Burch, Asst. Vice Pres. and Manager



**Keen
Eyes,
Bright
Future**

Grades go up and the future looks brighter for the youngster whose eyes are keen. Now is the time to let us check your children's vision and fit them with the proper glasses if necessary. You'll be glad you did. Call for appointment today.

DR. G. E. COSGROVE

OPTOMETRIST

"Glasses Here are Never Expensive"

135 S. Pacific Ave.

Redondo Beach FR 2-6045



IT'S HERE AGAIN!

ALLSTATE TIRE TRIUMPH SALE!

SEARS ROEBUCK AND CO.

Don't Miss This Once-a-Year Spring Tire Sale! Drive in Today and Trade-in Your Old Tires!

SIZE	Price without trade-in each, plus fed. tax		Price with trade-in each, plus fed. tax	
	Tube-Type Blacks	Tube-Type Whites	Tube-Type Blacks	Tube-Type Whites
6.70x15	23.95	17.88	28.95	21.88
7.10x15	26.45	19.88	31.95	23.88
7.60x15	28.95	22.88	34.45	26.88
SIZE	Tubeless Blacks		Tubeless Whites	
6.70x15	26.95	19.88	31.95	23.88
7.10x15	29.45	22.88	34.95	26.88
7.60x15	32.45	25.88	37.95	29.88
7.50x14	28.45	21.88	33.45	25.88
8.00x14	30.95	24.88	36.45	28.88
8.50x14	34.25	27.88	39.75	31.88

**NEW IMPROVED
SILENT CUSHIONS**

with **TYREX***

17⁸⁸
6.70x15 tube-type blackwall each, plus tax

*TYREX is the certification mark of the American Tyrex Corporation for viscose tire cord.
The tire of the future now at no extra cost to you. Tyrex gives you more safety, softer riding, better high speed performance, greater tread life and greater strength. Hooked edges in tread bite into pavement, takes hard road poundings, cushions impacts. Quality proven in extensive fleet tests. Nationwide road hazard guarantee prorated on months used.
Time Service Guarantee against all types of road hazards prorated on the months used based on current price without trade-in at time of return.

AND YOUR OLD TIRE
Expert Wheel Alignment Price for most cars only **6⁹⁵**
Wheel Balance includes weights and labor, per wheel **1.40**

Low Price On ALLSTATE Tube-Type COMPANIONS

Rugged New ALLSTATE Tire As Low As **11⁸⁸** 6.70x15 tube-type blackwall, each plus tax each.

Fleet tested for durability and road performance. Rugged X-41 cold rubber. Brand new, not a recap.

Trade-in price only **14⁸⁸** 6.70x15 tube-type blackwall, each plus tax

AND YOUR OLD TIRE

DRIVE NOW PAY LATER NO CASH DOWN... when you trade in your old tires **FREE TIRE INSTALLATION**

Tires Also at Sears-Westwood

ALL ROADS LEAD TO **SEARS** SATISFACTION GUARANTEED OR YOUR MONEY BACK

OPEN TOMORROW NIGHT SEARS-INGLEWOOD OR 8-2521 MANCHESTER at HILLCREST PARK FREE

OPEN 3 NIGHTS Sears Stores Open Mondays, Thursdays and Fridays 9:30 A.M. to 9:15 P.M. Open Tuesdays, Wednesdays and Saturdays 9:30 A.M. to 5:30 P.M. **PARK FREE**