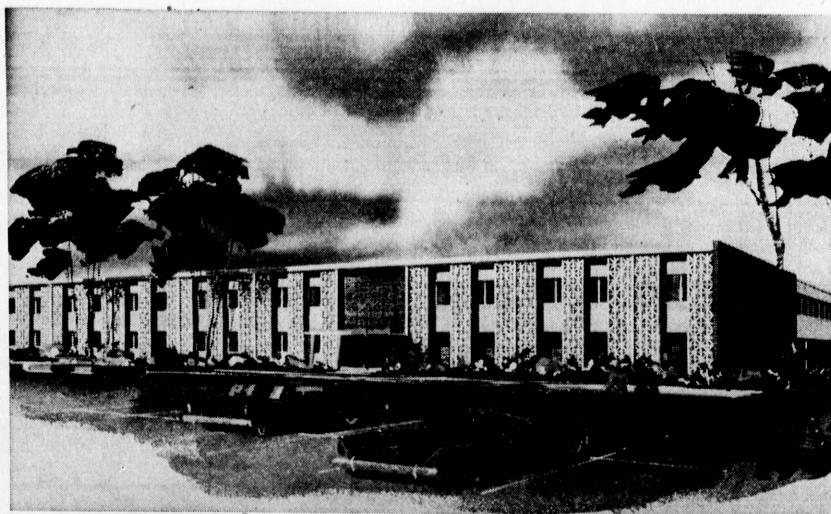




MEDICAL BUILDING LEASE SIGNED . . . Signing the lease which cleared the way for announcing a new three-quarter million-dollar medical center adjacent to the new Del Amo Shopping Center are (from left) Dr. Matthew P.

Romeo, secretary for the doctors' group; Eugenio Cabrero, secretary-treasurer for the Del Amo Estate Co.; Dr. Herschel S. Kopp, director and president of the doctors' group; and Robert R. Ashton, vice president, Del Amo Estate Co.



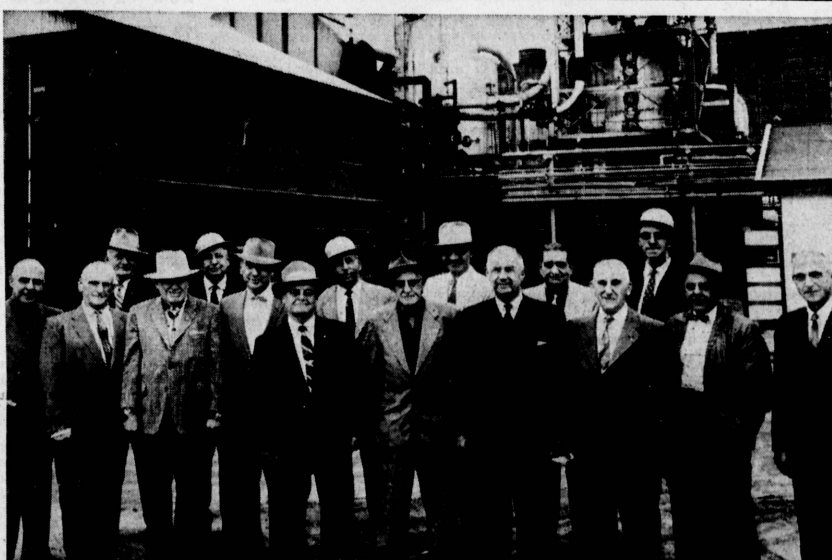
NEW MEDICAL CENTER . . . Architect's sketch (above) shows the new Del Amo Center Medical Building adjacent to the new Del Amo Shopping Center here for which plans were revealed this week. Coldwell, Banker & Co., who

figure prominently in the development of the entire center, arranged all lease negotiations for the three-quarter million-dollar medical facility.

New Medical Center Plans Revealed for Del Amo Site



WINS SPEECH CONTEST . . . North High School Junior Janice Dudley, center, is pictured receiving the "My True Security" award for her award-winning speech in the recent Jaycee contest. Presenting her with the loving cup are George Gillum, left, of the Jaycees and Mrs. Dunworth, right, instructor at North High. Janice is eligible to go on to district and



REUNION AT REFINERY . . . Shown as they gathered recently for the 30th anniversary of General Petroleum's Torrance refinery are: front row, Earl L. Coburn, A. O. Albert, Fred A. Arnold, M. L. Root, Paul Sanders,

J. W. Ellsworth, Chas. H. Harris, T. J. McDermott, C. C. Lenarth, I. B. Getman. Back row, Pat Coyne, S. S. Prigg, H. J. Nelman, Ernest Erratt, John R. Gobbie, and John H. Need.

Coldwell, Banker & Company, California realty firm, has disclosed lease negotiations have been completed between the Del Amo Estate Co. and a group of prominent Torrance area doctors for the erection of a medical building on property adjacent to the Del Amo Shopping Center here.

To be known as the Del Amo Center Medical Building, a ground lease has been drawn by a lease corporation consisting of 20 local doctors and dentists. The Medical Building will be erected by the doctors at a cost of \$750,000. Sixteen of the doctors participating in the lease corporation have indicated they will locate their practice in the new medical building.

LOCATED ON Hawthorne Blvd. to the north of Carson St., the 30-suite medical building will be conveniently located to Torrance Memorial Hospital, 96 beds; Riviera Hospital, 96 beds; and the Little Company of Mary Catholic Hospital now under construction and contemplating a 150 bed facility.

The Del Amo Center Medical Building will be a modernistic, two-story structure with 32,000 square feet of building area made available to doctors and dentists on a lease basis. A medical pharmacy will be incorporated as well.

DESIGNED BY Jones, Lockett & Poper, Long Beach architects, the entire building will have multi-zoned air conditioning with elevators serving the second floor.

Directors of the doctors' leasing corporation are Dr. Hersh Kopp, president; Dr. Richard McClure, a well-known auto racing participant in the southland; and Dr. Robert McCormick, Secretary of the group is Matthew P. Romeo.

COLDWELL, BANKER & Co. stated the new lease is for 55 years on the 2½ acre site of proposed construction, with options for an additional 2½ incorporated for the purpose of supplementing the initial medical building with a twin structure adjoining at some future date. With proposed future development, the medical facilities for 60 doctors and their staffs.

Parking is planned at a 7 to 1 ratio, allowing accommodations for 210 automobiles presently, and double that number with construction of the final unit of the Del Amo Medical Building.

This will be the largest concentration of medical doctors in the entire Torrance-South Bay region. Completion of the facility is set for late 1959.

featured from Children's Fair, as well as Harris & Frank, Newberrys and May Co.

A special section of reserved seats has been arranged and free tickets are available in any of the Center's 40 stores.

The shows will be staged on two 20 foot runways, affording a greater view of the styles, according to Merchants Assn. President Marc Bevan.

Ruth Knick Named WAC Recruiter

Captain Ruth Knick, native Californian, has been assigned to the southern California area as WAC Recruiting officer, it was announced today.

Prior assignments have taken Captain Knick to the Far East twice, once as a government employee on Guam and again as administrative officer for the adjutant general, Japan Logistical Command during the Korean conflict, and as executive officer for the WAC Detachment, Okinawa.

She has served as a platoon commander for women basic trainees at Fort Lee, Va.; training officer for the basic training battalion at the WAC Center, Fort McClellan, Ala.; and personnel management officer for the North Carolina Military District.

Captain Knick, a second generation native Californian, attended UCLA prior to entering the Women's Army Corps.

She wears the Army Commendation Ribbon, Good Conduct Medal, WAAC Service Ribbon, American Campaign, WW II Victory, National Defense, United Nations and Korean Service ribbons.

Personnel desiring information on the Women's Army Corps are asked to contact the local Army recruiter at Room 1, Post Office Bldg., or phone FA 8-7069.

VETS TO DISCUSS TAX EXEMPTION REPEAL

A meeting for veterans to discuss proposed legislation to abolish the Veterans' Property Tax exemption was held at the Bert S. Crossland Post No. 170, American Legion Hall, 1109 Border Ave. from 6 to 8:30 p.m. yesterday.

A buffet supper was served.



CAPTAIN RUTH KNICK . . . WAC Recruiter

FITZGERALD GIVEN HONORS BY JAYCEE

Dick Fitzgerald, manager of the Torrance Chamber of Commerce, has received an honorary life membership in the Costa Mesa Junior Chamber of Commerce.

Fitzgerald has been active in Jaycee work during the past several years, and was president of the California Jaycees and a vice president of the U. S. Jaycees.

GARDENERS CHECKLIST

1. Time is running out for bareroot planting. Deciduous shrubs will have to be put in nursery containers soon.
2. It's not too late to minimize the ragged look of bulb foliage after bloom. Set out Pansies and Violas in front of and among the bulbs. Also, double the foliage over and tie it with cord to tidy a bulb bed after bloom is gone.
3. Check nurseries for Saucer and Star Magnolias in bloom. Also for Camellias and Azaleas. Bloom time is the best time to buy these.
4. Lawns will come to life any week now. A feeding at this time will get them off to a good start when they do.
5. Be sure to plant bareroot roses as soon as you get them home. If there's to be any delay, bury the roots in moist soil and leave them until you do plant.

Indian Director To Speak At Seaside Church

Guest pastor at Seaside Community (E&R) United Church of Christ today will be Rev. Reuben H. Ten Haken, director of the Indian Commission for the Southern California Council of Churches.

Rev. Ten Haken will present the story of the Indian American with slides to the church school at 9:20 a.m. and will conduct morning worship service at 0:45 a.m. He has chosen as his sermon topic, "Divine Ownership."

Rev. Ten Haken formerly served as minister to a tribe of Indians on a reservation. He is presently engaged in rehabilitation of the Indian population moving into Los Angeles.

ALUMNI DANCE SET

The Leuzinger High School Alumni Assn. of Lawndale will hold its annual dance at the Mayflower Ballroom, Inglewood May 23. Music will be provided by "The Stardusters."

Refinery Notes Three Decades Of Progress

Thirty years of progress are being recalled at General Petroleum Corp.'s Torrance refinery this month. Three decades ago the first units of the refinery went "on stream." To celebrate the anniversary seven retired members of the original force and nine men still on the job after 30 years recently gathered at the refinery's first units.

Greeted at the reunion by A. W. Thompson, manager of the refinery, were: A. O. Albert, Fred A. Arnold, Paul Sanders, J. W. Ellsworth, T. J. McDermott, I. B. Getman, and H. J. Nelman.

Members of the original crew who are still employed at the refinery include: M. L. Root, S. S. Prigg, John H. Need, John R. Gobbie, Chas. H. Harris, Pay Coyne, Earl L. Coburn, C. C. Lenarth, Ernest Erratt, and Arnold L. Johnson, who was vacationing at the time of the ceremony.

Students Vie For \$100 Junior College Awards

Junior College students at El Camino, Compton College, Long Beach City College, and Los Angeles Harbor Junior College will have a chance at Bank of America's Junior College Business Awards, under which 120 students from 60 junior colleges will receive checks for \$100 apiece at the Beverly Hilton Hotel, Beverly Hills, April 17. Jesse W. Tapp, chairman of the Bank of America's board of directors, will present the winners' checks.



FASHION THREESOME . . . A Triumph on the left, a Renault Dauphine on the right, and shapely Sharon Walton in the middle — that's the pretty picture calling attention to South Bay Center's special exhibit of imported cars March 9 through March 14. Imported cars such as these from Bill Creighton Imported Cars will be on display on the main mallway of the Center in conjunction with "Fashions 59," two spectacular style shows on March 12 and 13. "The fashion shows will be at 2 p.m. both Thursday and Friday, and will be created with an international flair," according to Marc Bevan, president of the South Bay Center Merchants Assn.

South Bay Center Plans Fashion Show With International Flair This Month

Fashions with an international flair will be presented by South Bay Center, 174th St. and Hawthorne Blvd., with the staging of "Fashions 59," March 11, 12 and 13.

Amid an international setting, resplendent with over 50 imported automobiles, the Center will present two production style spectacles on Thursday and Friday afternoon at 2 p.m. in the main mallway adjacent to the new May Company. A luncheon

show in the Steak Knife Restaurant on Wednesday will preview the two outdoor shows.

THE FOREIGN car exhibit will commence Monday, March 9, and continue all week through Saturday. The cars will be displayed through the courtesy of the local imported dealers.

MG, Morris, Austin Healey, Lancia, Fiat, Borgward, Opel, Vauxhall, English Ford, Volvo, Hillman, Triumph and Renault will be among the imported

cars on exhibit. **FASHION** Coordinator Maggie Classen, who modeled in last year's South Bay Center Spring Festival indicated an exciting collection of the newest fashions would be presented from the May Company, Harris & Frank, Jaxsons, Adlees, Hartfields, Modern Women, the Motherhood Maternity Shop, Newberrys and Wraggs for Men. The accessories will show the latest from Lawsons Jewelers and Chic Accessories. Children's clothes will be