

GROCERY AND PRODUCE  
**OPEN**  
**24** HOURS  
DAILY  
7 DAYS  
A WEEK

# FARMER BOYS

SPECIALS FOR THUR - FRI - SAT - SUN., FEBRUARY 5 - 6 - 7 - 8

CORNER  
**CARSON**  
AND  
**FIGUEROA**

**MEAT and DELICATESSEN DEPARTMENTS UNDER NEW OWNERSHIP**

## BEEF STEAK



GREATEST  
STEAK  
SALE  
IN THE  
CITY  
GENUINE  
FANCY  
STEER  
BEEF

T - BONE PORTERHOUSE NEW YORK

**89** lb **95** lb **98** lb

KINGAN'S INDIANA  
**SLICED BACON** REG. 63c LB. **49** c lb.  
Oscar Mayer PORK LINKS 1/2 lb. **29** c

LUERS EASTERN SMOKED  
**HAM** SHANK END **39** c lb.

LEAN EASTERN  
**PORK STEAK** **49** c lb.

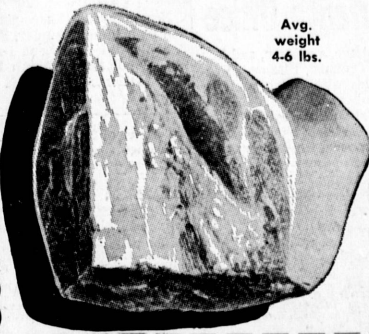
FRESH GROUND  
**CHUCK** 45c LB. **3** 1 29

ALL BEEF  
**BOLOGNA** 1 LB. Pkg. **39** c

ROASTING  
**RABBITS** **29** c lb.

WISC. LONGHORN  
**CHEESE** **49** c lb.

## Pork Shoulder



Avg. weight 4-6 lbs.

FRESH PICNIC  
EASTERN  
PORK

**29** c lb.

WITH THIS COUPON  
GOOD THROUGH FEB. 8 ONLY

# LARD

REX  
1 Lb. **5** c

HUNTS  
**TOMATO PUREE**  
PICNIC CANS

**10** For \$1



JUICY

## LEMONS

**1** c ea

HALVES **PEARS** 5 300 CANS \$1 SLICED or HALVES **PEACHES** 4 NO. 2 1/2 CANS \$1

SMALL RED **BEANS** 6 NO. 2 1/2 CANS \$1 HUNTS **SPINACH** 6 2 1/2 CANS \$1

SOLID PACK **TOMATOES** 5 NO. 2 1/2 CANS \$1 HUNTS **PORK & BEANS** 6 NO. 2 1/2 CANS \$1

**CHILI BEANS** 6 NO. 2 1/2 CANS \$1 HUNTS **TOMATO SAUCE** 15 FOR \$1

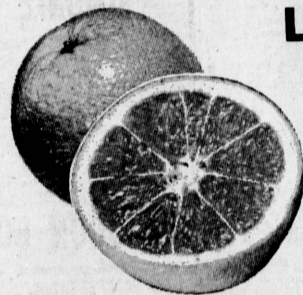
**TOMATO PASTE** 15 FOR \$1 HUNTS **HOMINY** 7 NO. 2 1/2 CANS \$1

**FRUIT COCKTAIL** 5 300 CANS \$1 HUNTS **SWEET PEAS** 7 300 CANS \$1

**TOMATO CATSUP** 7 14 OZ. BTLs. \$1 HUNTS **TOMATO JUICE** 5 46 OZ. CANS \$1

## ORANGES

LARGE NAVEL



**5** c lb.

FRESH  
**COCONUTS** **10** c ea



FANCY WASH. DELICIOUS  
**APPLES**

**3** lbs. **25** c