

# TORRANCE VOTES FOR IKE, KUCHEL

The Only Paper Blanketing All Sections of Torrance plus Lomita, Harbor City and Adjacent City and County Areas

## Torrance Herald

THURSDAY  
and  
Sunday

News & Adv. FA 8-4000  
42nd Year—No. 90

OFFICE AND PLANT AT 1619 GRAMERCY AVE., TORRANCE

Circulation FA 8-4004  
10¢ Per Copy 40 PAGES

TORRANCE, CALIFORNIA, THURSDAY, NOVEMBER 8, 1956

### Pair Crash Here In German Craft

Two men were injured but miraculously escaped death when a pre-World War II German airplane crashed Sunday near Torrance Municipal Airport.

The pilot, George S. Wing, 40, of Palos Verdes Estates, president of Trans Land Corp., suffered cuts and bruises.

### Chase Ends With Arrest Of Teenagers

Two 16-year-old car theft suspects were nabbed by police early Tuesday following a high-speed, bullet-punctuated chase.

Officers spotted the pair in a foreign-made sports car near 182nd St. and Hawthorne Ave. The auto had been reported stolen from a parking lot at El Camino College.

Police fired three warning shots into the air during a pursuit in which speeds of nearly 90 miles per hour were reached. The chase ended when the car veered off the road and into a vacant lot near 182nd St. and Falda Ave.

One of the youths was nabbed by police at the stolen car. The other was held by residents of the vicinity as he attempted to flee the area. The lads were turned over to sheriff's juvenile officers.

### Smokes Cause Boy's Arrest

A 16-year-old Wilmington boy was picked up by sheriff's deputies Monday after he tried to force a Lomita market owner to sell him some cigarettes.

The boy was arrested in a drunken condition and smoking a marijuana cigarette, deputies said. He was sought after he tried to get Dan E. Scheman, of Scheman's Market, 25349 Walnut St., to sell him some cigarettes.

When Scheman questioned the identification the boy presented, the lad grabbed him and attempted to force him to get the cigarettes. Scheman noted the license number and the boy was picked up shortly afterward.

### Young Mother Attacked By Man in Home

A young mother told police Tuesday that she was attacked by a strange man who emerged from a bedroom closet at her home here.

The 29-year-old victim said her assailant apparently had been hiding in the closet for more than an hour before he came out to assault her as she was preparing for bed.

She said her swarthy attacker warned her not to summon police after he left her isolated home.

The assault occurred while the woman's two young children were asleep in a nearby bedroom.

### 'Green Thumb' Burglar Visits Garden Shop

Somebody who was planning to do some gardening must have burglarized his shop, Reg Whitney of the Ladera Garden Shop, 24234 Crenshaw Blvd., told sheriff's deputies Sunday.

Two wheelbarrows, several shovels, two rakes, fertilizer, and several bags of lawn seed were taken by the burglars, as well as a camera. Total value of the missing goods was set at \$257. A door was kicked in to gain entrance to the shop.

### Snapped Wires

Skilfully, Wing glided the craft towards a field north of Lomita Blvd. and east of Hawthorne Ave. The plane snapped telephone wires and skidded across the ground before striking a 3-foot-high dike to nose over into a ditch.

The plane was rated a total loss, since replacement parts for the 19-year-old ship are not available.

Friends of Wing said he spent two years and nearly \$40,000 reconditioning the plane, which he found in a junk yard. He had been flying it about eight months.

Designed by famed aeronautical engineer Wilhelm Messerschmitt in 1933, the Wing plane is one of a type built for use by the Luftwaffe for high speed observation and liaison work. It was the forerunner of the famed Messerschmitt 109 that was the backbone of Nazi fighter squadrons during the war in Europe.

The plane was powered by a 245-h.p., inverted V, air-cooled German engine. It was brought to this country for study in 1945.

The 1:30 p.m. accident marked Pfieffer's 39th crash or forced landing, he said.

### Flames Sweep Through Home Here Tuesday

Fire swept through a residence at 24900 Hawthorne Blvd. late Tuesday night, completely destroying it and sending three children in a nearby trailer scurrying for help.

Mrs. Susanne Gassney was driving down Hawthorne, near the fire, when she found the three pajama-clad children running across a field, screaming hysterically. They told her that their house was afire, and that they had been in a nearby trailer alone when the lights went out and they heard a "boom," and saw the fire.

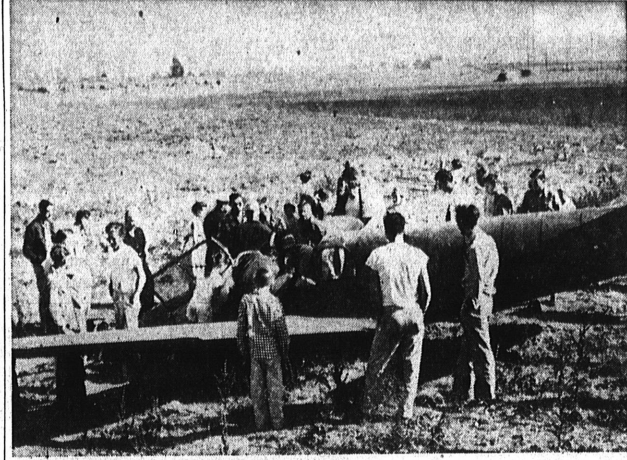
Mrs. Gassney called firemen. Two-Hour Blaze

Firemen battled the flames for more than two hours before the flames were brought under control. The house was occupied by the Francis Glabe family, as was the trailer. The children were alone at the time of the fire.

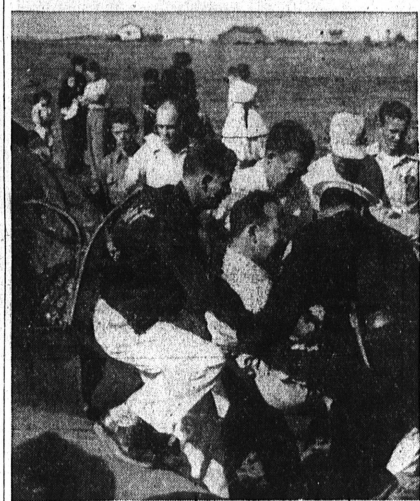
The cause was undetermined, according to firemen. Firemen were kept hopping this week, with several other residential fires and several grass fires.

Matches Blamed

Children playing with matches accounted for another fire, firemen were told. Considerable fire damage was done to a kitchen with smoke damage throughout the rest of the house at 5009 Cathann St. Monday.



PLANE CRASHES . . . A crowd gathers as two men crash land a German-made Messerschmitt 108 north of the Torrance Municipal Airport Sunday afternoon. Pilot and passenger escaped with injuries described as "not serious." The plane had been repaired at considerable expense prior to the Sunday crash.



FLYER RESCUED . . . Torrance police, bystanders, and Wright's ambulance attendants work to free one of the two men who crashed in the German-made Messerschmitt near the Airport here Sunday.

### Chest Campaign Opening Today

More than 2300 volunteer workers will start their house to house canvass today in residential areas throughout the harbor area to solicit gifts for the Los Angeles Area Community Chest.

Prior to the en masse solicitation the corps of workers will attend coffee hours in the homes of division and section chairmen to view the inspirational residential kick-off show, which will be televised from 9:45 to 10 a.m. on KTLA, Channel 5, and receive their assignments. The campaign film, "Craig," will depict actual scenes from welfare services offered by Chest-supported agencies.

Goal for the harbor area in the residential solicitation is \$32,743.

Goals Listed

Residential unit chairmen in the harbor area, together with their cities' residential goals are: San Pedro, Mrs. Paul Abrams, \$6125; Wilmington, Mrs. Frances Raschke, \$2788; Gardena, Mrs. Esther Schaffer, \$3505; Harbor City-Lomita, Mrs. Byron McDonald and Wally Berseht, \$1775; Palos Verdes, Mrs. A. E. Thompson, \$8016; Torrance, Mrs. E. J. Kelly, \$5417; and Rolling Hills, Leslie Cunningham, \$5117. The Los Angeles Area Com-

### DISTRICT VOTES

CONGRESS  
(980 of 1061 Precincts)  
King (D) 141,159  
Franklin (R) 76,383

ASSEMBLY  
(249 of 325 Precincts)  
Thomas (D) 39,090  
Brewer (R) 13,484

JUDGE  
(4425 of 9821 Precincts)  
Bowron 427,805  
Call 372,075

(120 of 167 Precincts)  
PROPOSITION 1  
Yes 19,950  
No 4,422

PROPOSITION 2  
Yes 22,326  
No 3,300

PROPOSITION 3  
Yes 17,181  
No 4,057

PROPOSITION 4  
Yes 5,747  
No 18,127

PROPOSITION 5  
Yes 9,908  
No 12,232

PROPOSITION A  
Yes 18,828  
No 4,170

PROPOSITION B  
Yes 20,216  
No 3,436

### King Wins Big Majority Here

Torrance followed national trends again in the 1956 elections, according to unofficial tabulations of Tuesday's record voting here.

While the voters were crossing party lines to add to President Eisenhower's overwhelming victory Tuesday, they stayed in their own parties to re-elect their Congressman and Assemblyman.

### Area's Vote

Torrance  
(117 of 117 Precincts)

PRESIDENT  
Eisenhower (R) 16,065  
Stevenson (D) 13,588

SENATE  
Kuchel (R) 14,961  
Richards (D) 14,536

CONGRESS  
King (D) 18,209  
Franklin (R) 11,006

ASSEMBLY  
Thomas (D) 16,452  
Brewer (R) 8,640

JUDGE  
Bowron 12,816  
Call 12,327

Lomita  
(17 out of 17 Precincts)

PRESIDENT  
Eisenhower (R) 1,813  
Stevenson (D) 2,399

SENATE  
Kuchel (R) 1,789  
Richards (D) 2,493

CONGRESS  
King (D) 2,945  
Franklin (R) 1,082

ASSEMBLY  
Thomas (D) 3,099  
Brewer (R) 1,059

JUDGE  
Bowron 2,020  
Call 1,531

Rolling Hills  
(Incomplete)

PRESIDENT  
Eisenhower (R) 1,680  
Stevenson (D) 369

SENATE  
Kuchel (R) 1,618  
Richards (D) 429

CONGRESS  
King (D) 725  
Franklin (R) 1,280

ASSEMBLY  
Thomas (D) 626  
Brewer (R) 1,475

JUDGE  
Bowron 811  
Call 1,046



PRESIDENT EISENHOWER  
... Wins in Torrance



THOMAS KUCHEL  
... Sent to Senate



CECIL KING  
... Wins Easily



VINCENT THOMAS  
... Gets Ninth Term

### News Index

Society	9-13
Features	21
Editorials	22
Sports	26
Church news	32
Legal news	32
Want ads	35-9

### GOP Gets Vote Of Woman, 88

"I'd vote twice if I could." That was the observation of Mrs. Minnie B. Mayne, 88, as she went to the polls Tuesday to continue a 67-year habit of voting and always for Republicans. Although she became blind about two years ago, she told her daughter,

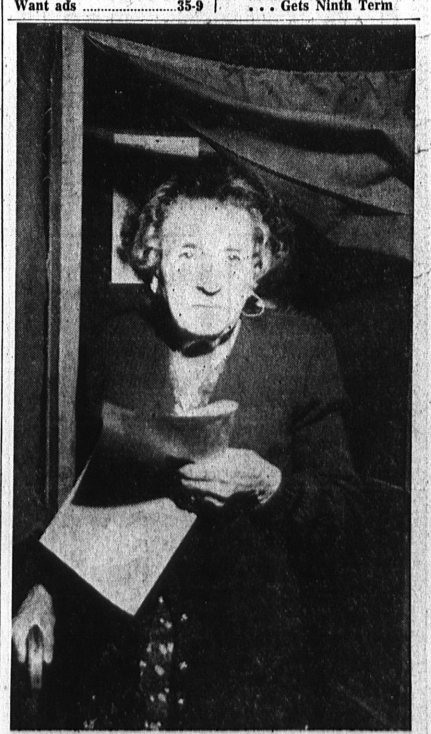
Mrs. Elva Mayne McMillen, how to mark her ballot and proudly dropped her vote in the ballot box.

The spry octogenarian, who was born in Colorado territory on March 7, 1868, has been voting since 1890, since Colorado was one of the first states to grant woman suffrage.

Namesake of Town

Mrs. Mayne's maiden name was Brush, the family for whom the town of Brush, Colo., was named. Her uncle, J. L. Brush, served two terms as lieutenant governor of Colorado. Mrs. Mayne also was related to the Sterling family, for whom Sterling, Colo., was named.

After her father was killed by Indians when she was 5 months old, Mrs. Mayne fell heir to vast ranch holdings in Colorado and until she sold the land 16 years ago managed her holdings.



PERENNIAL VOTER . . . Mrs. Minnie B. Mayne, 88, 1914 1/2 Gramercy Ave., casts her vote in Tuesday's election and, as always, it was for the Republican candidate. Mrs. Mayne has been voting since 1890. Although she has been blind for the past two years, she still looks forward to casting her ballot.