

Release Time Program OK'd

Children in the fourth, fifth, and sixth grades may be released from school to take part in religious instruction at their churches or other officially designated places, the Torrance School Board decided Tuesday night.

In adopting the policy, the board limited such excused absences to four times a month. Each pupil must attend school at least the minimum time for his grade. No pupil on double session will be excused from classes, the board decided.

"Moverama" TO VISIT TORRANCE, OCTOBER 4

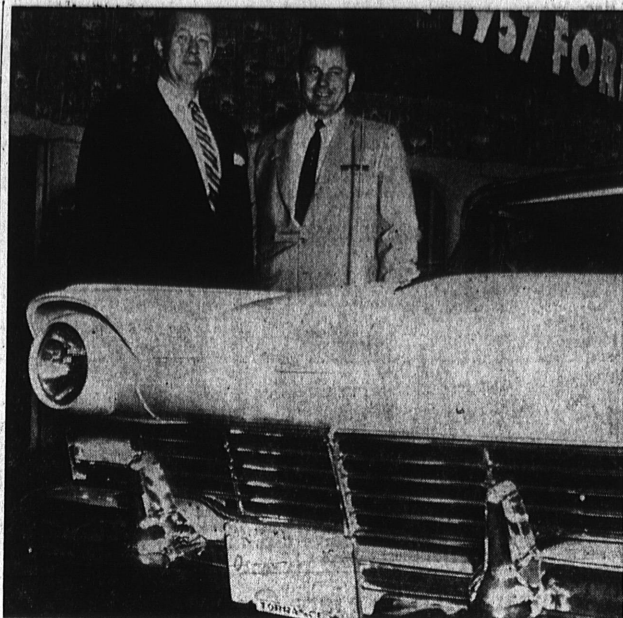


See this spectacular display FREE!

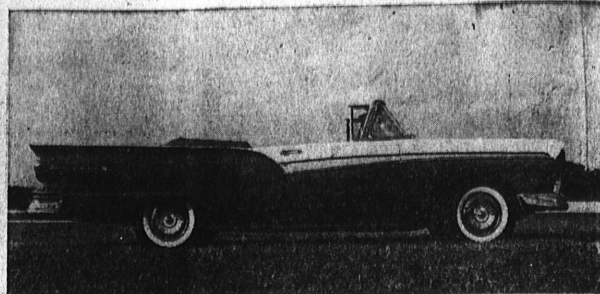
Mayflower, "America's Finest" Long-Distance Furniture Mover, is constantly developing new and better ways to answer your moving needs. Today, the Mayflower Moverama, a spectacular display of all the latest scientifically developed methods and materials for moving, storage, and packing of household goods, visits our city. The entire staff of our company, plus the employees of numerous other Mayflower agencies in this area are devoting their time and energies today to learning the newest ways of serving you better.

For the safe, easy way to move...
for the finest storage, call...

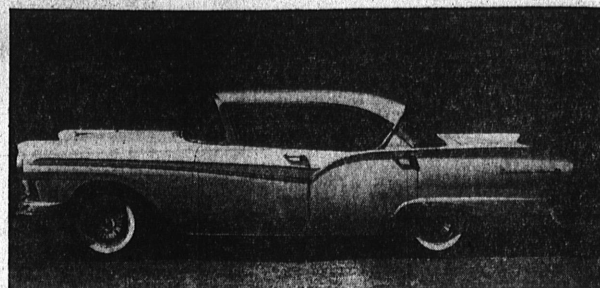
TORRANCE VAN & STORAGE
21809 S. WESTERN FA 8-7021
Your Exclusive Local Mayflower Agent



NEW FORDS FOR '57



LONGEST, LOWEST EVER . . . The new Ford convertible is the longest, lowest ever made. This Sunliner was introduced here yesterday by Oscar Maples Ford, 1420 Cabrillo Ave., along with most of the other 19 new models in the Ford line for 1957.



THE NEW VICTORIA . . . From the road up, the 1957 Fords are a complete departure from previous models. The new models were unveiled for the first time here yesterday at Oscar Maples Ford, 1420 Cabrillo Ave. Shown here is the four door Victoria.

ELECT TOM BREWER
SUPPORT IKE
PEACE, PROSPERITY AND PROGRESS
ELECT TORRANCE'S OWN
BREWER FOR ASSEMBLY

THE NEW MODEL . . .
Oscar Maples, left, and Vel Miletich, president of Oscar Maples Ford, 1420 Cabrillo Ave., look over the new Fairlane 500 Victoria, top model among the new cars which went on display at the dealers' showrooms yesterday.

REDUCED

for Clearance!

'56 FORDS

VEL MILETICH
Says:

Because of our 1957 Preview Wednesday, October 3rd, we must sell all of our 1956 Fords regardless of our loss! No reasonable offer will be refused!
REMEMBER - YOUR TRADE-IN WAS NEVER WORTH MORE!

THIS IS TOO GOOD TO MISS

SEE IT NOW!

Being Shown at Both Locations
THE ALL NEW

'57 FORD FREE

\$500 IN PRIZES
Nothing to buy . . . Just Come in and Register

- ORCHIDS FOR THE LADIES
- GE 17" PORTABLE TV
- FRESH WATER FISHING OUTFIT
- SALT WATER FISHING OUTFIT

REFRESHMENTS WILL BE SERVED!
FREE BALLOONS FOR THE KIDDIES!

WE'LL BE ESPECIALLY GLAD TO SHOW YOU THE NEW '57 FORD!!



OSCAR MAPLES FORD, INC.

WALTERIA
101 HWY. AT HAWTHORNE BLVD.
FA 8-8488

2 GIANT LOCATIONS:

Downtown Torrance
1420 GABRILLO AVE.
FA 8-5014

New '57 Fords Unveiled Here

Ford's 1957 line, with 19 entirely new body styles in five series, went on display for the first time here yesterday at Oscar Maples Ford, 1420 Cabrillo Ave., and at Hawthorne and 101.

"The new Fords have the highest performance engines ever offered in the low price field, and the 1957 models represent the biggest change in the modern history of the Ford car," President Vel Miletich of Oscar Maples Ford said.

The new Ford line divides into two basic sizes, the Fairlane and Custom, plus the station wagon series, each with its own body and chassis. In addition, the Fairlane series has been expanded to offer the "Fairlane 500" models which have extra luxury features.

All models are now on display at Oscar Maples Ford's two Torrance locations, Miletich said.

Prizes Offered

An added attraction to the new models at both the Torrance headquarters at 1420 Cabrillo and in Walteria at Pacific Coast Hwy. and Hawthorne Blvd., Oscar Maples Ford has arranged to give away \$500 in prizes during the new model showings. To be awarded without obligation this week end will be a GE 17-inch portable TV, a fresh water fishing outfit, and a salt water fishing outfit. Refreshments also will be served at the two locations.

Catching the attention when the new line was unveiled yesterday were the Fairlane and Fairlane 500 models, the Custom models, and the station wagons.

Ford has continued the recent trend for lower bodies without sacrificing headroom inside. The Fairlane models are nine inches longer and four inches lower than the 1956 models, Miletich reports. Custom models are three and one-half inches lower as are the station wagons. All models are from three to nine inches longer.

All of this has been made possible by extending the frame to the sides of the car, permitting a lower floor inside the frame rails.

Dimensions Changed

All other dimensions have been changed. Wheels, frame, rear axle, drive shaft, engines, and every inch of sheet metal in every body style are definite departures from past models.

Standard engines for the Fairlane and station wagon series is the 212 h.p. Thunderbird V-8. The 190 h.p. V-8 is

standard for the Custom, and the 144 h.p. Mileage Maker six is available on all models.

Optional on any model is the Thunderbird Special V-8 engine which develops 245 horsepower. A special high performance four-barrel carburetor and dual exhausts have been provided for all of the 245 h.p. engines.

A new two-barrel carburetor, providing as effective performance as last year's four-barrel models, is featured on the standard V-8 engines. A single throat model is installed on the Mileage Maker six.

New Colors Added
Responding to the demands of the color-conscious motoring public, all colors, upholstery materials, and trim are new on the 1957 Ford.

The new Ford line has 12 solid exterior colors and 19 two-tone combinations. Basic colors for solid treatments are colonial white, raven black, flame red, doeskin tan, Dresden blue, starmist blue, willow green, Cumberland green, woodsmoke gray, gunmetal gray, silver mocha, and Inca gold. These are used, with the addition of coral sand, in two-tone combinations.

Thirty-seven different fabric-color upholstery combinations are available in the Ford line.

It's All New
Seat upholstery cloth is nylon in new and exclusive patterns, and cloth and woven plastics are latex-backed for longer wear.

Broaden range of floor coverings includes carpet textured vinyl-carpet, looped rayon carpeting, and ribbed linoleum.

From the instrument panel to door handle, from window lifts to vent latches, and from the grill to the taillight, the 1957 Ford is new—all new.

THE OLD TIMER



"If your wife wants to learn to drive the car, don't stand in her way!"

JUST PLAIN HUNGRY?

Eat with Charley

AT DANIELS CAFE 1625 Cabrillo Ave.
DOWNTOWN TORRANCE