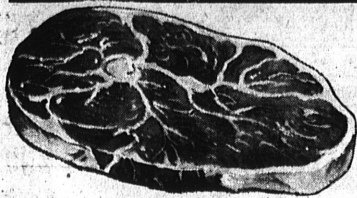


Value Leadership Sale!

TOM HINCKLEY'S
 THE SUPERMARKET WITH THE COUNTRY STORE FLAVOR
 241st and NARBONNE, in Lomita
 OPEN 8 A.M. TO 10 P.M.
 PHONE DA 6-9964 Limit rights reserved.

Manning's Finest Quality—Center Cuts

ROUND STEAK 65¢ lb



Manning's Finest Quality—No Waste—Boneless

RUMP ROAST 69¢ lb
Reg. 89¢ lb

Manning's Finest Quality—Fresh, Lean

Ground Beef 3 Lbs. 87¢

At Hinckley's get only the finest...
"MANNING'S STEER BEEF!"
 "Every bite a delight!"

MANHATTAN—Fresh (By the Piece)
LIVER SAUSAGE 35¢ lb

MANHATTAN—1-lb. Pkg.
ALL-MEAT FRANKS 39¢ lb

Cock o' the Walk
PEAR HALVES
 No. 2 1/2 Cans
29¢

Cock o' the Wa
 GREEN
ASPARAGUS
 No. 300 Cans
4 For \$1

Birds Eye
 Frozen—10-oz.
PEAS
15¢

VET'S
DOG FOOD
 No. 1 Tall Can
5¢

Stokely's 2 1/2—Solid Pak
TOMATOES 4 for \$1

Reg. Size
LIFEBUOY SOAP 3 for 27¢

Welch Frozen—5-oz.
GRAPE JUICE 2 for 39¢

Puss 'n Boots—8-oz.
CAT FOOD 3 for 25¢

Gebhardt's (Plain)—1 1/2-oz.
CHILI CON CARNE 39¢
 Reg. Size
MODESS 39¢
 Reynolds—Reg. Size
ALUMINUM WRAP 29¢

Swift'ning
SHORTENING
 3-lb. Can
67¢

PILLSBURY
 2-lb. Box
PANCAKE MIX
29¢

Waxtex
WAX PAPER
 100 Ft. Per Roll
17¢

Silk
TOILET TISSUE
 PER ROLL
5¢

CRISP CALIF. DELICIOUS
APPLES
3 25¢
 LBS.

QUALITY PRODUCE
 LARGE SIZE—RED
YAMS 5¢ lb
 Farm Fresh
 Thompson Seedless
GRAPES 3 19¢
 LBS.

HOME GROWN—SOLID
TOMATOES 49¢
 LUG

COMPLETE WINE & LIQUOR DEPARTMENT!
 ALL THE NATIONALLY FAMOUS BRANDS
 COMPLETE SELECTIONS OF ALL BRANDS OF BEER

TOM HINCKLEY'S
 — LOMITA —
 241st St.
 Narbonne Ave.
 South Arlington Becomes Narbonne at HINCKLEY'S in LOMITA

SPECIALS FOR THURSDAY, FRIDAY & SATURDAY SEPTEMBER 20-21-22

ROD & GUN Chatter



By DONNA BARKDULL

Nimrods interest centering around tasty venison at present. The High Sierras are crawling with gun toting sportsmen while still others are waiting for the opening of the new inland buck shoot this week end, Sept. 22. All hunters are warned to use extreme caution as fire hazards are at the high peak. Scattergunners continue to find safe spots to bag their limits of the big fat dove here and abouts. Only ten more days to get a year's supply for the freezer. Something should be done about the existing laws — hunters traveling a couple of hundred miles can only count on bringing home one limit, which is ten birds, no matter how many days they stay in the dove country. Should be able to tag them as they do with pheasant — dove hunters are allowed a limit a day, but are still only allowed to have one limit in possession. Which means if they want to hunt two or three days, the birds must be given or even thrown away if not eaten the same day as taken. What a waste!

Deep sea addicts continue to chase down the remaining blue fin in local waters, coming up with an occasional albacore. Don't know why more aren't going with heavy tackle.

Speaking of black sea bass, that's what will be served Friday night at the American Legion Hall when the Torrance Rod and Gun holds their annual fish fry. All you can eat for \$1.50—kids, 75 cents. Dinner will be served from 6:30 until 8:30 p.m. Tickets available from any Torrance member or at the door.

Touch Grid League Set

Adult Seven-Man Touch Football Leagues are now being organized at municipal playgrounds throughout the Los Angeles area. Teams comprised of church, industrial, and college groups are working themselves into top condition for the opening gun of league competition.

Probable schedule for the 1956 season is as follows:
 Open Industrial League, Monday and Wednesday nights; Church League, Tuesday and Thursday nights; Southern California Christian College Conference, Friday night; Southwest Industrial League, Monday and Wednesday nights; North American Inter-Plant League, Tuesday, Wednesday and Thursday nights; Woodbury College League, Sunday mornings; Open League, Sunday mornings.

Additional information concerning the Touch Football Assn. may be obtained by contacting the Los Angeles City Recreation and Park Dept., MI 5211, Stations 478 or 666.

SOUTH BAY PLAY OPENS

League play at the newly opened South Bay Bowling Center got under way Monday evening. According to Pete Spilos, general manager of the 54 lane operation, approximately 6000 bowlers have entered the various leagues to run through the 1957-57 season.

A major spectator attraction will be the Ladies All-Star Doubles tournament which will take to the lanes at 9 p.m. each Thursday. Top competition is expected in the league as the winners will be sent to compete in the 1957 National Doubles in Indianapolis.

SEE BETTER DRIVE CONFIDENTLY
 Good vision is necessary for top driving skill... helps you see your way clear to greater safety... gives you greater confidence on the road. Stay on the safe side. Have your eyes examined.
"glasses here are never expensive"
Dr. G. E. Cosgrove
 OPTOMETRIST
 135 S. PACIFIC AVE. PHONE FR 2-6045
 REDONDO BEACH

This is the real thing... our University Sport Coat

It gives you a distinctive look! We feature not an adaptation of this tried-and-true fashion, but the real thing. Striped tweed in approved colorings, trim, straight-hanging lines and the well-rounded skirt. Absolutely required for the University man... very good-looking on every other man. Come browse through our selection and pick your favorite.

Use our lay-away Charge accounts invited
1319 EL PRADO
 Torrance FA 8-6328