

TORRANCE CHURCH CALENDAR

CENTRAL CHURCH
EVANGELICAL
UNITED BRETHREN
Marcellina & Arlington
Rev. Walter H. Stanton
FA. 8-3010
11:00 — Morning Worship
6:30 — Youth Fellowship
7:30 — Evening Worship
Midweek Worship Service 7:00
Wednesday Evening

FIRST LUTHERAN CHURCH
Carson and Flower
Rev. Paul Wenzel, Pastor
Phone FA 8-5884—Res. FA 8-3249
Sundays: 9:30 — Worship Service
9:30 — Sunday School
10:45 — Worship Service

FOUR SQUARE GOSPEL CHURCH
1207 El Prado—Tel. DA 8-2072
Rev. and Mrs. Jas. P. Lowen,
Pastor
SUNDAY: Sunday School 9:30 a.m.
Morning Worship 10:45 a.m.
Group Services 6:30 p.m.
(Y.P., Cadets, Defenders)
Evangelistic 7:30 p.m.
MIDWEEK: Wednesday — Bible Study at 7:30 p.m.
PUBLC INVITED

THE FIRST METHODIST CHURCH
El Prado at Manuel Avenue
Rev. John L. Taylor, Minister
Rev. Don Shely, Associate
Church school for all ages, 9:00
Early W-ship—Youth Choir,
church school fourth grade and
below.
10:00 Church School, all ages
extended session fourth grade
and below.
11:00 Morning Worship—Adult
Choir.
Infant care from 10:00 to 12 a.m.
6:30 High School Youth Fellow-
ship.

St. Andrews
Episcopal Church
1432 Engracia Ave. FA 8-2781
The Rev. Hugh R. Percy, Rector
Sunday Services—9:15 and 11 a.m.
Sunday — Holy Communion
Sunday
2nd Sunday—Morning Prayer
3rd Sunday—9:15. Holy Baptism
or Morning Prayer
4th and 5th Sunday — Morning
Prayer
Holy Communion at 7:30 a.m.
Sunday School at 9:15 a.m.
Baby Sitting at 9:15 and 11 a.m.
Thursdays—11 a.m. Holy Com-
munion

FIRST CHRISTIAN CHURCH OF TORRANCE
(Disciples of Christ)
2930 El Dorado, Pastor
Rev. H. Milton Sigel, Pastor
Res. Phone FA 8-5454
Two sessions of Church School
and Morning Worship, 9:30 and
11:00 a.m.
Nursery provided at both
sessions.
Christian Youth Fellowship—
7 p.m.

WALTERIA ASSEMBLY OF GOD
244th and Hawthorne Ave.
C. W. Fish, Pastor
Glenn Rogers, Assistant Pastor
Sunday School Superintendent,
Clarence Reed
Sunday School 9:45 A.M.
Morning Worship 10:00 A.M.
Evangelistic Service 7:30 P.M.
Prayer Meeting Tues. 7:30 P.M.
C.A. Service Thursday 7:30 P.M.
Mrs. Ruth Todd, president
Anyone desiring admitted help
may feel free to call at the par-
sonage 2446 Hawthorne Ave. or
phone FR 8-7788 any hour of the
day or night.

TORRANCE BAPTIST TEMPLE
Meeting YWCA Hall
2220 W. Carson
Sunday School 10 a.m.
Morning Worship 11 a.m.
Young People's Meeting 6:30 p.m.
Evening Evangelistic Service
7:30 p.m.
Mid-Week Prayer Service
7:30 p.m., Wednesday
(place to be announced)

Crenshaw Baptist Church
Southern Baptist
18748 Crenshaw Blvd.
Harvey H. Hobbs, Pastor
Phone DA 8-0555
Sunday School—8:45 a.m.
Worship—11:00 a.m.
Training Union—6:30 a.m.
Evening Worship—7:30 p.m.
Prayer Meeting—Wednesday
Evening—7:30 p.m.
Nursery and Child Care
Each Service

WALTERIA FIRST BAPTIST CHURCH
PARK and NEWTON STS.
Rev. L. P. Husted, Pastor
FR 5-7793
Bible School at 9:30 A.M.
Morning Worship at 11:00 A.M.
Young People's Service at
6:00 P.M.
Inspirational Gospel Hour at
7:00 P.M.
Wednesday—7:30 P.M. Bible
Exposition and Prayer.
A hearty welcome to all.

The Church of Jesus Christ of Latter Day Saints
Torrance Ward
1880 W. 220th Cor. Cabrillo & 220th
FA 8-1983
SUNDAY SERVICES
Priesthood Meeting 7:45 a.m.
Sunday School 9:30 a.m.
Sacrament Meeting 5:00 p.m.
Mutual Improvement Association
Tuesday 7:30 p.m.
Relief Society Tuesday 10 a.m.
Primary, Wednesday 8 p.m.
Seminary, Monday through Fri-
day, 6:30 a.m.

EVANGEL TEMPLE ASSEMBLY OF GOD CHURCH
Temp. Location at YMCA
2266 Washington Ave.
New Church Under Construction
at Corner Cypress & Sepulveda
A Friendly Sunday
Sunday School—10 a.m.
Morning worship
Youth Service—6:30 p.m.
Evangelistic—7:30 p.m.
Rev. Gene May, Pastor
Rev. Clyde Steadler—Pastors
Res. Phone TE 4-5722

First Presbyterian Church of Gardena
1842 Gardena Blvd. DAVIS 4-1064
REV. FRANK M. JOLLEY
9:30 a.m. Church School
11 a.m. Morning Worship
7 p.m. Youth Fellowship

Torrance First Assembly of God
3648 Torrance Blvd.
Reverend W. T. Holcomb, Pastor
FR 5-3520
Sunday School 9:45 a.m.
Morning Worship 11 a.m.
Evangelistic Service 7:30 p.m.
Prayer Meeting and Bible Study
Wednesday 7:45 p.m.

ST. MATTHEW LUTHERAN CHURCH MO. SYNOD
Normandie and Lomita Blvds.
Harbor City, Calif.
Church of the Lutheran Hour
Sunday services 10:45 A.M.
Rev. M. Passow, Pastor
Office phone DA 6-1958
Residence Th. DA 6-4457

Temple Menorah and South Bay Jewish Community Center
Friday Night
Religious Services 8:00 p.m.
Religious School—First Methodist
Church (Temporary Location)
119 Torrance Blvd. Redondo Beach
Sundays 9:00 a.m.
Phone FR 4-5995 or FA 8-6081

FIRST BAPTIST CHURCH OF EL NIDO
4558 W. 182nd St., Redondo Beach
Rev. Leland L. Piel, Pastor
Sunday School 9:45 a.m.
Adult Church Services,
11 a.m.
Training Classes for All Ages,
6:30 p.m.
Worship Church Service,
7:30 p.m.
Midweek Services, Thursday
Choir rehearsal, 6:30 p.m.
Prayer Service, 7:30 p.m.

South Bay Baptist Church
4605 Shady Lane,
Torrance, California
Dr. J. C. Brumfield,
Pastor
Sunday School—9:30 A.M.
Morning Worship—10:30 A.M.
Children's Church—10:30 A.M.
Training Union—6:30 P.M.
Evening Church Service,
7:30 P.M.
Bible Study—7:30 P.M.
Wednesday, 7:30 P.M.
Nursery and Toddler Care
All Services

CHRIST THE KING LUTHERAN CHURCH
Meeting at Crenshaw School
Maynard V. Midtun, Pastor
3226 W. 179th DAVIS 9-3458
Sunday School, 9:30 A.M.
Divine Worship, 10:45 a.m.
Nursery and child care provided
11:00 a.m.

TORRANCE CHURCH OF THE NAZARENE
401 W. Carson St.
Phone 8-4080
Rev. Freeman A. Brunson,
Minister
1502 W. 248th St.
Phone 8-0564
9:45 Sunday School Hour
10:50 Morning Worship
6:45 Youth Hour
7:30 Evening Evangelistic
Service

WALTERIA COMMUNITY METHODIST CHURCH
Newton at Ward St. Walteria
Rev. Bill Steele, Minister
Phone FR 5-5454
Two Church Services
8:30 and 11:30
Two Sunday Schools
9:30 and 11:00
Nursery care at 11 a.m. service
7:00—7th and 8th Grade
Youth Fellowship
7:30—High School
Youth Fellowship

HOPE CHURCH EVANGELICAL UNITED BRETHREN
3547 W. 174th St.
Rev. Howard Bergeson
Ph. DA 9-3277—Res. DA 9-3542
9:30 a.m.—Sunday School
10:45 a.m.—Morning Worship
7:30 p.m.—Evening Worship
Church Fellowship Night—
Wednesday 7:30 p.m.
Prayer Meeting, Wed. 7:30 p.m.
(Nursery care provided)

SEASIDE COMMUNITY CHURCH
(Evangelical and Reformed)
2292 Ocean Avenue
Rev. Richard A. Miller, Pastor
Telephone FR 5-5223
9:30 a.m. Church School for Chil-
dren of all ages and for adults
10:45 a.m. Church Service Child
care provided during church ser-
vice. Visitors welcome.
6:30 p.m. 2nd and 4th Sundays—
Youth Fellowship.

CHURCH OF CHRIST
1217 Cravens Avenue, Torrance
R. E. Prout, Minister
8:30 a.m.—Worship Service,
9:45 a.m.—Bible Study,
10:45 a.m.—Worship Service,
6:00 p.m.—Young People's
Meeting
7:00 p.m.—Evening Worship.
WEDNESDAY
1:30 p.m.—Ladies Bible Class
7:30 p.m.—Bible Study.

SEVENTH-DAY ADVENTIST
Corner of Acacia and Bonoma
Elder Glen L. Gaffar, Pastor
Residence — FR 5-8773
Church Office — FA 8-1540
Sabbath School—9:30 a.m.
Church—11:00 a.m.
Bible Study—Wed. 7:30 p.m.
Young People's Meeting—Fri.
7:30 p.m.

LOMITA MISSIONARY CHURCH
2043 Lomita Blvd., Lomita
Sunday School 9:45 a.m.
Morning Service 11:00 a.m.
Youth Service 6:30 Sunday eve
Evening Service 7:30 Sunday eve
Midweek Service 7:30 Wed. eve.
Roy Whittem—PASTOR

NATIVITY CATHOLIC CHURCH
1447 Engracia Avenue,
Rev. Patrick McGuinness, Pastor
Telephone FA 8-2776
Schedule of Masses and Services
Ten Sunday Masses, Seven at
Main Church, 1449 Sacramento Ar-
tinue—6:00, 7:00, 8:00, 9:00, 10:15,
11:15 and 12:15. One at Nativity
Annex, 1415 Engracia Ave., at
10:00 a.m. Two Masses at Mission
Church of St. Joseph, 2314 W.
Del Amo Blvd., at 9:30 and 11:00
a.m. Ministry Class into the truth
of religion every Thursday night
at 8:00 p.m. in the Rectory, 1447
Engracia Avenue. A v. a. s. Confession
three times on Saturday—10:00
to 11:00 a.m., 4:00 to 6:00 p.m.,
7:30 to 9:00 p.m. Baptisms Satur-
days and Sundays at 3:00 p.m.
First Communion at Nativity
Annex, immediately after 10:00
a.m. mass. Infant care from 9:00
to 11:00 a.m. at Nativity Annex.

Ascension Lutheran Church
The Church of the Lutheran Hour
1600 S. Prairie, Torrance
Sunday School and Bible Class
9:30 a.m.
Morning Worship Service 8:30
and 11 a.m.
Family Worship Service, 11 a.m.
Holy Communion, first Sunday
of the month.
Rev. L. C. Warneke, Pastor
3834 W. 178th Street, Torrance
Parsonage: DAVIS 9-3366

Real Estate Courses Set At Troy Soon

Current real estate practices are subjects of four evening classes announced for the fall term of University College of the University of Southern California, beginning on campus Sept. 24.

The class in principles of real estate will take up current practices of appraisal, ownership, financing and transfer of property. The same class will meet twice weekly, Wednesday and Thursday, with Jerry Saunders, N. M. Saunders Co. and Dr. G. Preston Martin instructing.

Dr. Henry A. Babcock of the SC faculty will give two classes. On Mondays a course on real estate appraisal will include subjects of sales analysis as well as costs in appraising single family dwellings and the estimating of building construction. Calculations of land areas, and a study of trends will be discussed in a Wednesday class on mathematics of property valuations.

Studies of leasing, collections, tenant selection, budgets and purchasing will be among discussions in a Thursday class on principles and practices of property management. Instructors will be Stanley Jones, George Elkins Co., and Henry G. Beaumont, owner, Beaumont Co.

All classes will meet from 7 to 9:40 p.m. through January 30 and offer college credit.



HEAD DRIVE . . . Lawrence A. Harvey, Jr., right, president of Torrance's Harvey Aluminum, is pictured here with Jack Manlid, of Haldeman Pipe and Supply, and Carl Loddie, center, of Pacific Iron and Steel Corp. The trio of industrialists are area chairmen in the commerce and industry section of the Multiple Sclerosis Hope Chest Drive.

BOARD MEASURE — One board foot is a unit of timber 12 inches square and one inch thick.

RANKS FOURTH — Brazil is surpassed in size by three countries—Russia, China and Canada.

LONE NEIGHBOR — Maine is the only state which adjoins only one neighboring state.

HARVEY HEADS INDUSTRY CAMPAIGN DRIVE FOR MS

Lawrence A. Harvey, Jr., president of Harvey Aluminum this week predicted the commerce and industry phase of the current Multiple Sclerosis fund campaign in Torrance would top last year's figure.

He is commerce and industry collection chairman for this area.

Harvey reported the fund drive, the "MS Hope Chest," has an overall goal of \$300,000 in the greater Los Angeles. He added that the commerce area and industry section hopes to raise a third of that sum.

He stated that MS officials reported that present indications reveal that last year's total of \$58,000, collected by commerce and industry, should be doubled.

"Of course," he added, "this goal can be achieved only through the cooperation of the people who have volunteered to contact business and industrial leaders in their own communities and also through the generosity of individual donors."

Hundreds of thousands, perhaps millions of dollars are lost every year to business and industry through the drain in manpower because of Multiple Sclerosis, Harvey said.

Multiple Sclerosis is a crippling disease of the central nervous system which destroys or disturbs the powers of speech, sight, hearing, movement, and balance. It often results in total or partial pa-

ralysis for its victims. Its cause and cure are unknown.

"Because MS attacks its victims between the ages of 20 and 40, when young people are most productive, MS looms as a disease which business must combat," he said.

Funds contributed to the MS Hope Chest go towards providing patient aid for MS sufferers in this area and to finance research into finding a way to cure it.

STAUFFER CHEMICAL INCREASES HOLDINGS

Stauffer Chemical Co. and Harshaw Chemical Co. in joint statement recently, announced the purchase of Stauffer of Harshaw's interest in two jointly owned chemical companies — New York Chemical Corp. and Nyo Chemicals, Inc.

New York Chemical Corp. which manufactures anhydrous aluminum chloride, antimony trichloride, and anhydrous hydrogen chloride, was formed by Stauffer and Harshaw in 1941. New York Chemical has plants located in Elkton, Md., Niagara Falls, N. Y., and Dominguez, Calif.

Band At Pt. Fermin

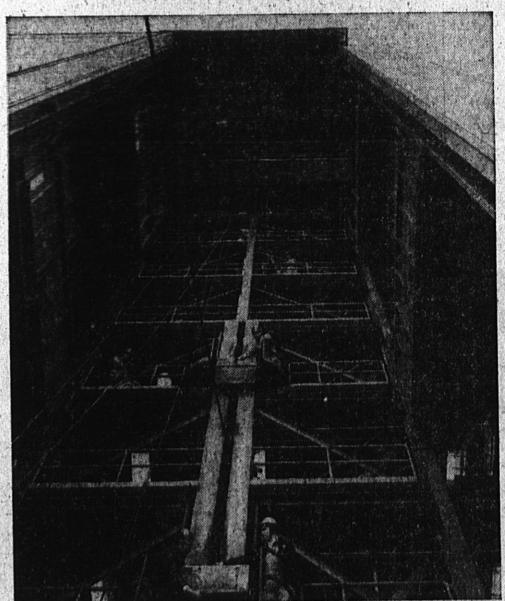
A 45-piece symphonic band, led in an all-request program by Arthur J. Babich, will be featured Sunday at 2 p.m. at Pt. Fermin Park in San Pedro.

Mark Cook, tenor, will be soloist.

NORTH AMERICAN HAS BUILT MORE AIRPLANES THAN ANY OTHER COMPANY IN THE WORLD

AIR NEWS FROM NORTH AMERICAN

Another picture report of progress at North American Aviation



SUPERSONIC "SILO" Inside this huge test tower at North American's Missile Development Division at Downey, California, technicians check equipment that is used to simulate flight loads imposed on a missile. Steel columns—enormous jigs stretching the full height of the silo-shaped building—are built strong enough to resist a horizontal force of more than 100,000 pounds. This and other special equipment has been produced by North American during its 10-year history in this field to solve unique structural and manufacturing problems involved in the development of supersonic missiles. One of today's major results of this pioneering is the SM-64 Navaho Intercontinental Missile.



START OF A NEW ERA. Dr. Marlin Remley, Atomic International scientist, turns a control-panel dial during the activation of the first nuclear reactor built for private industrial research. It was designed and built by Atomic International, a division of North American Aviation, Inc., for the Armour Research Foundation of the Illinois Institute of Technology in Chicago. The 50,000 watt reactor will now be used to explore food preservation methods; the structure of rubber, plastics, glass and ceramic; the nature of friction which could produce new lubricants. The program at Armour is supported by a group of participating companies who will use the reactor for private industrial studies. Atomic International has also designed, is building, and will operate the SRE power reactor for the Atomic Energy Commission . . . a major milestone in the ABC's program to advance the development of economical electrical power from atomic energy.



HIT THE DIRT! Basrunner Mike Blount, son of a North American employee, demonstrates for Bucky Emmick, athletic director for the company's Boys Baseball School, the proper way to stretch a single into an extra-base hit. Keeping an eye on the play are a group of potential big leaguers. Since 1948, when the school was initiated, over 3000 "rookies"—age 6 to 16—have been taught the fundamentals of baseball at instruction classes held in North American plant cities of Los Angeles and Downey. Umpiring and coaching is handled by North American Dads.



THE BIRDS AND THE BEES. Airframe fabrication at North American has been improved by using aluminum honeycomb and wax? At left, employee Frank Algarme holds a piece of compressed aluminum honeycomb. Foreman "Red" Handley has stretched out a similar piece to demonstrate its elasticity. This amazingly strong yet lightweight material is used instead of ribs and stiffeners in airplane trailing edges, doors, bulkheads and speed brakes. Nearly 30,000 North American-produced weight-saving airplane parts have been built of honeycomb aluminum—a result of techniques developed by North American's engineering research. One of these techniques is to machine-expand the honeycomb and fill it with a wax-like material to support it while being cut to parts-size dimension. The wax is removed after machining by heat and vibration.

ENGINEERS — Outstanding Opportunities at North American Aviation, Rocketdyne, Autonetics and Atomic International. Contact any of the Engineering Personnel Offices.

NORTH AMERICAN AVIATION, INC.

Los Angeles, Downey, Canoga Park, Fresno, California; Columbus, Ohio