

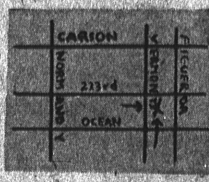
VERMONT DAIRY

DELICIOUS RICH MILK AT THE LOWEST PRICE!

17 1/2¢ PER QUART

DRIVE IN SOON

VERMONT DAIRY FARMS — ALL GRADE A DAIRY PRODUCTS — 22400 SO. VERMONT, TORRANCE



Open Every Day from 7:30 a.m. to 8:30 p.m. FA 8-4891

Friends, Neighbors Turn Out for Gala Farewell Party for the Germany-Bound Wilbrecht Family

By ALICE PERKIN FA 8-5265

Auf Wiedersehen! was the farewell salutation on the unique place cards presented to guests attending Mr. and Mrs. M. Caldwell's bon voyage party for honored Major and Mrs. Lloyd Wilbrecht last Friday night. The couple left Saturday morning for Germany. The Caldwells, of 1204 Fonthill, entertained four tables of bridge, awarding prizes to high women's and high men's scores. After cards the guests enjoyed a late buffet of baked ham, cheeses, chips, hors d'oeuvres, German coffee cake, and coffee. The decor of fresh cut flowers was enhanced with reminders of old world tokens. Tilles were fashioned as miniature luggage pieces gay with travel stickers from Paris, Rome and Holland. The buffet napkins and centerpiece boasted festive European scenes. Over their "going-away" gifts from friends attending the party, the Wilbrechts bade everyone an affable adieu. Those attending included Messrs and Mrs. Otto Lippold, Phelan Foley, Earl Clayton, Lloyd Wilbrechts, Robert Clayton, Robert Prout, Mrs. Valore Murphy, and Mrs. Kenneth Perkin.

A scarlet carnation corsage was presented to Mrs. Robert Schooley on the happy occasion of her birthday by her friends and neighbors attending a party held for her at the home of Mrs. Lester Murdoch, 2763 Onrado St. The vibrant corsage was fashioned by Mrs. Paul Hardie and Edward Unrein. Guests enjoyed a jaunty "Happy Birthday Barbara" cake and coffee along with their late afternoon conversation and best wishes to the honoree. Those attending included Mrs. Don Bryant, Don Harding, John Beahan, Wilma Murdoch, Paul Hardie and A. Armitstead.

Frequent "Cas-Cas" dancers fascinated guests and members alike as they danced in the aisles during the Osteopathic dinner held Saturday night at the Higgins Brick Yard Recreation Room. ACCENT! Theater trouped the remainder of the Gay Nineties Olio on a stage platform entertaining the Osteopathic Fund Raising charity project into a captivating evening. Guests arrived in chuck wagon costumes, some went wild western and others went in the Lillian Russell motif. They enjoyed the cocktail hour prior to the barbecue dinner and the entertainment. After dining, Hank Heimlein and his guitar led them in riotous community singing. Guests ended the evening dancing and playing general party games. Those attending from our area were Messrs and Mrs. Robert Kelsey, Lou Dyer, William Rosewell, F. Steffen, and Paul Harstead.

Too excited to have their ice cream and cake at home, the teenage set attending Dennis Dyer's 11th birthday party, took their shoes to have their refreshments on the way to their entertainment. So packing sandwiches and cake into the station wagon the group took off to Disneyland. Mrs. Dyer barely took time to open his gift before they left. They rode everywhere, saw everything and attempted to eat everything! They managed ice cream, tacos, french fries, hamburgers, and soft drinks in addition to their earlier station wagon feast! Those attending included Robert Fierce, Larry Armitstead, Bob Stout, Craig Oshworth, Mike Crenshaw, and Rudy Beltran.

Tally-Ho met last Monday at the home of Mrs. Alleen Capps, 2604 Blinnwood, for their bi-monthly bridge party. Games, helpings of apple pie and coffee were served guests and members before playing. Bridge prizes were awarded to winners Mrs. Pat Clark and Mrs. Capps after the absorbing game. Those attending were Miss Charlotte Kinsing, Pat Clark, Pat Peters, Madeline Zaborowski, Alice Perkin, Audrey Pipkin, and Ann Willis.

Do You Like Tender Juicy Dinner Steaks? TRY ZIM'S CAFE 24846 NARBONNE — LOMITA We Bake Our Own Pies • Open 5:30 a.m. to 7:30 p.m.

AUTO & FIRE INSURANCE NO MONEY DOWN — UP TO 12 MOS. TO PAY Whitney INSURANCE AGENCY 2325 Torrance Blvd. FA 8-1130

BIG NEWS ABOUT THE BIG MERCURY The Low Price is just the FIRST way you save! ASK US THIS WEEK! TORRANCE MOTORS, INC. 1885 Torrance Blvd. FAIRfax 8-3065

SAFeway



Wait, ma'am...WAIT! Don't tell him about your new hat until you have filled him with

CORNERD BEEF AND CABBAGE

There's sound advice! After friend husband ties into this old favorite he'll be ready for anything...with a smile! Men... (and women too!) love the incomparable flavor of Safeway Corned Beef. It's all top-quality, boned, and trimmed of excess fat. Then it's cured by an exclusive controlled curing method. Safeway Cabbage is perfect, too...crisp, solid heads brought to you at their very peak of flavor. And remember...Safeway Corned Beef and Cabbage, besides being a sure husband-pleaser, is a break for your budget!

Corned Beef lb. 39¢ Boneless Brisket USDA Choice beef, mildly cured

Cabbage Fresh, firm, crisp, green lb. 3¢

Ground Beef lb. 35¢ Tenderly ground beef. Packed in extra yielding, sealed form of Safeway.

Small Spareribs Eastern grade top pork, 3 lbs. or less 39¢

Chicken Wings Major Brand Grade A, 1-lb. pkgs. 35¢

Chicken Breasts Major Brand Grade A, 1-lb. pkgs. 98¢

Whole Whiting Captain's Choice Fresh-Frozen 1-lb. pkg. 39¢

Ocean Perch Captain's Choice Fresh-Frozen 1-lb. pkg. 39¢

TIDE SUDS All-Purpose giant pkg. 55¢

Kraft's Velveeta Cheese Spread All-Purpose 2-lb. can. 69¢

Flour Kitchen Craft Enriched 5-lb. bag 37¢ 10-lb. bag 73¢

Jane Arden COOKIES 1-lb. pkg. 49¢

Melrose SNAPS 2-lb. bag 49¢

Roxbury JELLY EGGS 1-lb. bag 29¢

Cotillion ICE CREAM 2 pint 45¢

Fresh Bread Mrs. Wright's white or wheat large loaf 25¢

Wonder Bread Fresh-baked white large loaf 28¢

Cheerios Oat cereal—ready-to-eat 17¢

Sperry's Kix Corn cereal—ready-to-eat 24¢

Wheaties Wheat cereal—ready-to-eat 16¢

Asparagus Spears Highway 1 1/2-lb. can 29¢

Preserves Supreme Strawberry 20-oz. jar 40¢

Rosetta Prunes Highway 1-lb. pkg. 29¢

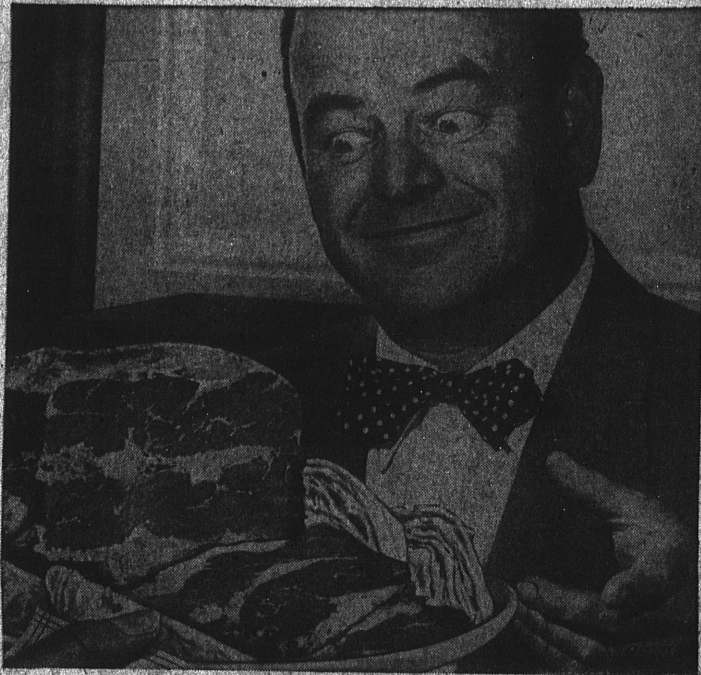
Sandwich Spread Lemon 1-lb. jar 36¢

Horseradish Silver Spring 6-oz. jar 19¢

Sour Cream Lucerna brand half pint carton 22¢

Brocade Soap Mild Talc 10-bar pack 49¢

Wrisley's Soap Mild Talc 8-bar pack 57¢



ROUND STEAK Center Cut USDA Choice beef Boneless Cut lb. 63¢ Bone in lb. 55¢

Best Foods Margarine 1-lb. ch. 19¢

Star Kist Chunk style 6 1/2-oz. can 25¢

Tomato Juice (18-oz. 10¢) 46-oz. can 19¢

Vacuum packed Golden Corn 2 12-oz. cans 25¢

CURTIS CAKE SPECIAL Chocolate-Iced SILVER SQUARE CAKE 49¢

Cinnamon Rolls Curry baked 12-pk. of 25¢

Hot Cross Buns Curry baked 12-pk. of 25¢

RED APPLES Washington Delicious 2 lbs. 25¢

Celery Hearts Fine for Salads cello pkg. 19¢

PARADE DETERGENT Large box FREE when you buy giant steel bonded pack. both for 55¢

FAB DETERGENT Special savings! Buy large size with "Sc-off" label large box 26¢

Prices effective Mar. 15, 16, 17, '56, and in Safeways upon Sundays in this area, thru Mar. 18. No Dealer Sales. Limit rights reserved. Applicable taxes collected.

Shop SAFeway

Safeway prices are low every day!

Chunk Tuna Sea Trout—from the deep Pacific 6-oz. can 19¢

Cottage Cheese Blossom Time—in former, cream, chive pint cup 19¢

Large 'AA' Eggs Cream O' Crop—fresh from local egg ranches 1-doz. ch. 55¢

Margarine Sunbake—naturally better as a spread or in cooking 1-lb. ch. 17¢

Snow Flake Sodas Nabisco—baked crop 1-lb. box 23¢

Kraft's Mustard Horseradish style—extra good on corned beef 6-oz. jar 10¢

1890 Dressing Milant's French—for deliciously better salads! 6-oz. bottle 27¢

Salad Dressing Dutch's brand Fancy quality quart jar 35¢

Dill Pickles Zippy brand—in plain or kosher style. Your choice 22-oz. jar 29¢

Van Camp's Tamales With sauce 15-oz. can 21¢

Chili Con Carne Van Camp's with beans 15 1/2-oz. can 27¢

Bel-Air Frozen Vegetables

French Fries Premium quality 6 9-oz. pqt. 89¢

Chopped Broccoli 6 10-oz. pqt. 89¢

Leaf Spinach Premium quality 6 12-oz. pqt. 89¢

Baby Lima Beans 10-oz. pkg. 21¢

Farm-Fresh Fruits and Vegetables!