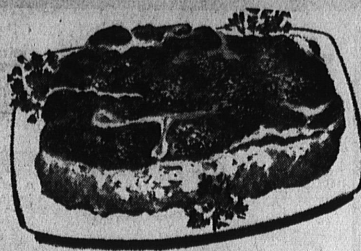


M.J.B.
1-lb.
VACUUM CAN



COFFEE
85

Roth's HELP YOU TO THESE MONEY-SAVING



Chuck Roast

MEATS

29 BONELESS BEEF Stew Meat **49**
O-Bone Beef Roast **59**

MARVELUS STRAWBERRY JELLY
20-OZ. JAR
25^c

LIQUORS

House of Roth 80 Proof **3²⁹**
VODKA Full Fifth
Manchester Inn Blend of Straight Whiskies **3²⁹** Full Fifth
BEER 6 12-oz. Cans **85^c**
ACE HI EASTERN
House of Roth Bottled in Bond Full Fifth
Ky. Straight Bourbon 4²⁹

FROZEN FOOD

COUNTY FAIR APPLE PIES 43^c
MINUTE MAID ORANGE JUICE 15^c
KERMIN PIES CHICKEN, TURKEY BEEF — 5 for \$1
FRABEL'S FRIED CHICKEN DINNERS 12-oz. 65^c
EGG FOO YOUNG 12-oz. Wong's **39^c**
FRIED RICE 11-oz. Wong's
PORK CHOP SUEY 14-oz. Wong's
CHICKEN CHOP SUEY 12-oz. Wong's
WONG'S EGG ROLL 6-oz. or SWEET & SOUR PORK 10-oz. **49^c**

CREME PAC ICE CREAM
1/2 GALLON
49^c

RANCHO HOUSE APRICOTS
2 1/2 CAN **19^c**

Tender Swiss Steak PAN READY
SLICED BACON ROTH IMPERIAL
ROCK FISH FRESH FILLET **3**

DELICATESSEN

FINE QUALITY SKINLESS WIENERS 3-lb. Cello Bag **95^c**
OSCAR MAY BRAUNSCHEWITZ CHUBS 3-oz. Pkg. **3**
Dairy Fresh Sliced AMERICAN OR PIMENTO CHEESE 1/2-lb. Pkg. **29^c**
BORDEN'S PLAIN OR PIMENTO CREAM CHEESE 2-3-oz. Pkg. **2**
OXYDOL Lge. **34^c**
Spic Span Reg. Pkg. **28^c**

FISHER'S BISKIT MIX
40-OZ. PKG.
29^c

NORTHERN FACIAL TISSUE
300 Count Box **2 for 27^c**

MAGNOLIA PRUNES
2-LB. CELLO PKG.
25^c

Golden Creme
BREAD
White or Wheat Sliced
LARGE LOAF
26^c

Trend giant pkg. 49 ^c	Borax Chips 33 ^c
Laura Souther Peanut Butter, 18-oz. jar homog. 39 ^c	Calgon 18-oz. 29 ^c
Laura Souther Mayonnaise, qt. 59 ^c	Baker Boy Confection Roll, ea. 49 ^c
Beads o' Black, 18-oz. pkg. 39 ^c	Miracle Whip Sandwich Spread, pt. 36 ^c
Nestle's Morsels 6-oz. 21 ^c	Nabisco's Grahams 6 1/2-oz. 21 ^c
Libby's Corned Beef 43 ^c	Pacific Tree Crackers, 1-lb. 33 ^c
Tree Top Apple Juice 12-oz. 39 ^c	Citrus Soap large 28 ^c
Reddi Whip 16-oz. 54 ^c	Chicken of the Sea Oyster Stew, 10-oz. 31 ^c
Libby's Tomato Juice 10c	Chunk King Noodles, 3oz. 17 ^c
No. 800 can 2 for 27 ^c	Instant Coffee, 6-oz. 1.57
Bab-o-Cleaner reg. 27 ^c	Cleona Virginia Peanuts, 7 1/2-oz. 37 ^c
Smucker Elderberry Jelly, 12-oz. 27 ^c	
Mahatma Rice 2-lb. 32 ^c	
Star Italian Peppers, 8 oz. 22 ^c	
Niagara Starch 12-oz. 21 ^c	
M & M Candy 29 ^c	
Reynold's Foil Wrap 25-ft. roll 27 ^c	
Tropical Apricot Preserves, 12-oz. 29 ^c	
Van Camp Chili & Beans No. 800 25 ^c	
Carmanon Instant Milk, 8-qt. size 65 ^c	
Starkist Chunk Style Tuna, 1 1/2 29 ^c	
Swift Baby Food Meats, 8 1/2-oz. 21 ^c	
Bell Chopped Olives 4 1/2-oz. 10 ^c	
Boraxo 20 Mule Team, 8-oz. 15 ^c	
Borax Powder 20 Mule Team, 2-lb. 33 ^c	

cheer Lge. Pkg. **33^c**

IVORY Med. Bar **3 for 26^c**

Libby Sliced Pineapple 1 1/2 Can **19^c**

KRAFT FRENCH DRESSING 8-oz. **22^c**

UNDERWOOD DEVILED HAM 4 1/2-oz. **31^c**

DASH DETERGENT 24-oz. Pkg. **38^c**

IVORY Personal **4 for 23^c**

ANACIN 30's **49^c**

KRAFT CASINO DRESSING 8-oz. **29^c**

Northern Toilet Tissue

CAMAY Reg. Bar **3 for 26^c**

IVORY FLAKES Lge. **34^c**

JOY 12-oz. Can **38^c**

LIPTON TEA THE DASH TEA 1/4-lb. **43^c**

NORTHERN TOILET TISSUE 3 Rolls **25^c**

DUZ Lge. Pkg. **33^c**

IVORY SNOW Lge. Pkg. **34^c**

LAVA Reg. Bar **2 for 23^c**

LIPTON TEA BAGS THE DASH TEA 16-oz. **23^c**