

ELLINWOOD

Heavy Rains Slow Columnist's Activities

By JANET ROBINSON
FR. 5-7068

Due to the rain storm our telephones in this area are out of order — consequently the news is brief this week. We hope the rain didn't dampen the Newton School fathers enthusiasm for the Dad's

Donut Date last night (Sunday) at the school cafeteria. Will be able to give full details on the turnout in next week's column. The committees organizing the date have worked hard to make it a success. Those on the committee were: Webster Smith, school principal; Nick Deilan and Victor Kilburn, teachers; and Richard De Armitt, George Peck, Harry Shires and Carl Rogers. The PTA women issued a challenge to the men. There were 125 mothers who attended the "Get Acquainted" tea. Did the men meet that challenge last night? Watch this column next week to see if the men attended "Dad's Donut Date" 125 strong!

The Roland Rogers, of 4521 Green Meadows Ave., have a house guest this week. Roland's mother, Mrs. Ruba Rogers of Santa Monica, is convalescing from a major operation and has been spending a restful week with her son, daughter-in-law, and her two little granddaughters, Linda and Nancy. The Frank Popes with their

two older children, Witt and Missy, traveled to the San Bernardino Mountains last week end to visit Santa's village. According to all reports the children were greatly impressed with the real Santa who greeted them there. His white whiskers really grew out of his chin! The village was well worth the trip to see. They just missed the snow by a day.

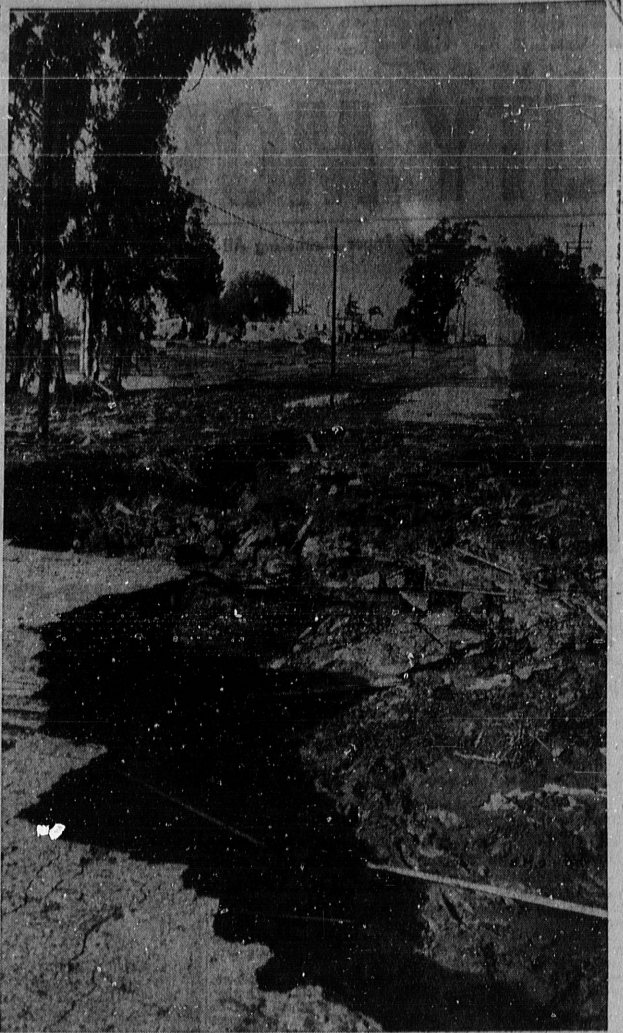
Little Laniel Pesce, of 5624 Riviera Way, celebrated her second birthday on Sunday, the 22nd of January by taking her first ride on a Merry-go-round and train. She went to the Redondo Pier with brother, Todd, and daddy and mama for this event.

A Copper Craft Party was held in the home of Jeanne Bowman Tuesday night. Lots of unusual and interesting items of copper were shown to the guests during the evening by Leona Pusinger of Los Angeles. Those shopping for copper to brighten up their homes were Catherine Dawson, Margaret

Darnall, Ruth Miller, Jean Hanson, Mary Wilhelm, Dottie Frey, Agnes Rogers, Delores Charter, Liz Adams, Charlene Michaelson, Betty Harrall, Merla Wilson, and Doris Udy. Spice cake and coffee were served to the guests.

Bill Bowman, of 4526 Pacific Coast Hwy., is leaving by plane for San Francisco today on a business trip that may take from two to five weeks, but Jeanne and the children won't be lonesome while he is gone—Bill's sister, Mrs. Donald Chiappelli and her two sons, Clifford and Michael, from Paris Island, S. C., will be here for an indefinite stay. Let's hope the sun comes out and shines for part of their visit so they will have fond memories of Torrance.

TREE FARMS
There are now more than 2,500,000 acres of tree farms in the Douglas fir regions of the Pacific northwest.

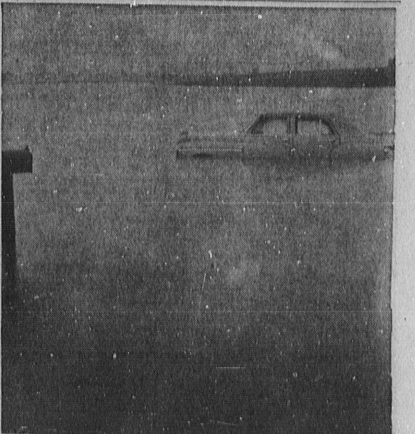


(Herald Photo)
DETOUR, MUDDY ROAD . . . This is what was left of Arlington Ave. south of 166th St. when the rampaging flood control channel went down Friday. The water, which was impeded by the inadequate culverts under Arlington, tore over the street, ripping out large chunks of it and washing the chunks downstream. Extensive fill and repairs will be needed to make the roadway usable again.



(Herald Photo)
TORRANCE'S OWN HARBOR . . . If there was any way to get to it, Torrance could qualify as a port city with this basin which straddles Hawthorne Ave. just north of Pacific Coast Hwy. Known the year around as "Walteria Lake," it is usually farmland. This view was taken from the air north of Sepulveda Blvd. looking south toward Rolling Hills. Hawthorne Ave. is on the top left of the picture, the other street running into the lake is Ocean Ave.

WINE BASE
Vermouth has a base of white wine, fortified with alcohol and then aged for a year or more in wooden casks.



(Herald Photo)
FORGOT HIS OUTBOARD . . . The driver of this sedan forgot to tie on his outboard when he attempted to cross the water on Sepulveda just west of Main St. Thursday during the height of the rain. It was there for some time.

Mademoiselle
January Clearance
Now In Progress!
Sacrificing to Clear!
DRESSES
SUITS
COATS
SKIRTS
BLOUSES
SWEATERS
ROBES
BLOUSES
HATS
REDONDO SHOP
in the triangle . . . FR 2-8201
WESTCHESTER SHOP
. . . ORchard 2-2414

INCOME TAX SERVICE
File Now for Early Refund!
PHONE FAirfax 8-7408

\$200 LESS
New Ford, Chevy, Plymouth
Auto Insurance \$8.50 Dn. Year to pay, cut rate. Also Minors, Servicemen, Assigned Risk, etc. etc. JAMES WHITE CO.
10th and Sepulveda (Hwyway 101) Manhattan Beach Frontier 2-6590

STATE LAW
Auto Insurance \$8.50 Dn. Year to pay, cut rate. Also Minors, Servicemen, Assigned Risk, etc. etc. JAMES WHITE CO.
10th and Sepulveda (Hwyway 101) Manhattan Beach Frontier 2-6590

7223 Crevens
FAirfax 8-1223
Torrance, Calif.

Halverson-Leavell
FUNERAL DIRECTORS

STOP-SHOP-SAVE at ROTH'S!

PACIFIC GOLD PEARS
2 1/2 Can
25^c

DROMEDARY ANGEL FOOD Cake Mix
17 Oz.
39^c

ROSEDALE GREEN LIMAS
303 Can
13^c

HUNT'S PORK and BEANS
2 1/2 Can
15^c

STOP-SHOP-SAVE at ROTH'S!

VOLUME HIGH —
PRICES LOW —

ROTHS MARKET'S THE PLACE TO GO!

SALAD OIL
GOLDEN CREME
Qt. Bottle **43^c**

MEAT meal makers

LEAN BONELESS
STEWING BEEF 49^c lb.

FRESH DRESSED
ROASTING RABBITS 29^c lb.

LEAN MEATY
SHORT RIBS 17^c lb.

ARMOUR'S STAR
LINK SAUSAGE 53^c lb.

QUALITY PRODUCE

SWEET ARIZONA
GRAPE-FRUIT 4^c ea.

BEST QUALITY
BROWN ONIONS 5^c lb.

DELICATESSEN

GOLDEN CREME—1ST QUALITY AA BUTTER 59^c lb.

OSCAR MAYER SLICED ALL MEAT
BOLOGNA 7 Oz. Pkg. 29^c

FROZEN FOOD SPECIALS	WEBER EGG NOODLES 12 oz. 29 ^c	REAL GOLD—6 oz. ORANGE JUICE BASE 17 ^c
CAL-FAME ORANGE JUICE 6 OZ. 2 for 33 ^c	NALLYS—Hot or Reg. CHILI & BEANS 24 oz. can 31 ^c	SNOWDRIFT 3 lb. can 87 ^c
SWANSON'S FRIED CHICKEN DINNERS 12 OZ. 69 ^c	ORTEGA CHILI SALSA 7 oz. 19 ^c	SWIFTS—3 1/2 oz. can BABY FOOD MEATS 20 ^c
	PLANTERS—7/8 oz. can COCKTAIL PEANUTS 39 ^c	UNDERWOOD DEVILED HAM 2 1/2 oz. can 17 ^c
	REAL PRUNE PRUNE JUICE 24 oz. bottle 27 ^c	

Roths SUPER FOOD MARKETS

SPECIALS FOR MON., TUES., WED., JAN. 30-31; FEB. 1
1321 Post Avenue, Torrance
109 S. Hawthorne Blvd., Hawthorne
310 E. Manchester, L.A.—12021 W. Washington, Culver City—3024 S. Sepulveda, L.A.—2412 Pico Blvd., Santa Monica—2709 E. Main, Ventura

Sales Tax Collected on All Taxable Items We Reserve the Right to Limit Quantities