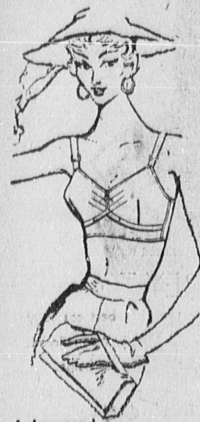


BENEFIT PARTY

A card party will be held Friday evening at 8 o'clock in the parish hall of St. Catherine Laboure Church, 3846 Redondo Beach Blvd. Chairman of the event will be Mrs. Patrick Fitzgerald to be assisted by Mrs. George Kubota and Mrs. Truman Morphis.

Mrs. O. O'Connell will be chairman of a cake sale to be held Sunday morning following each church service.

Sam Levy



I dreamed I modeled new Paris fashions... in maidenform's Allo-ette

For a figure with a French accent, accentuate your curves in Maidenform's marvelous Allo-ette! Allo-ette is cut to mold your figure perfectly, give it a breathtaking lift for the new high-bosomed fashions. Try it today in your favorite fabrics... from 2.00

Sam Levy
Department Store
TORRANCE

Dr. Hindman In Lecture Series Here

Dr. Wilbert L. Hindman, professor of political science at USC will present a series on "How to Work with People in Groups" at the YWCA, 437 W. Ninth St., San Pedro. The series began last Tuesday.

The course will be five sessions in length. Successful meetings will be on Tuesday, Oct. 18, 25, and Nov. 1 and 8. The series is aimed at training those who work with people to do a more adequate job. Such topics will be considered as: How to get things done using the democratic method; how to have effective meetings; how to develop participating members; how to reach a group decision; how to be a better leader; how to lead a discussion; how to be a better board member; and how does leadership ability grow.

As the series will be under the joint sponsorship of the San Pedro Adult school and the YWCA the only fee will be the adult school usual registration fee. The YWCA committees at work on the project are: Volunter personnel headed by Mrs. Carl Taylor with Mrs. Mitchell Reskusch, Mrs. Milton Meroth, Mrs. Arthur Kent, and Mrs. Alfred Jorgensen as members of the committee; and Public Affairs with Mrs. Frank Bird as chairman. Members of this Committee are: Miss Frances Dastarac, Miss Ann Guidinger, Mrs. Schuyler Hoffman, Mrs. Leonard Thompson, and Mrs. Walter Hopson.

TRIO LODGE TO GIVE CARD PARTY

Members of the Trio Odd Fellow Lodge of the Independent Order of Odd-Fellows of Torrance will sponsor a card party on Saturday evening at the Masonic Hall. Preceding the card playing there will be thirty minutes of pictures shown and narrated by E. E. Clark, world traveler who has entitled his film "Orient of Today."

Card playing will begin at 8 p.m. and bridge five hundred canasta and pinochle will be played. High score prizes as well as door prizes will be awarded. Charles Merry will serve as host for the evening. Refreshments will be served.

Added Store Hours
SUNDAY 11 A.M. to 6 P.M.
SATURDAY NITE 'TIL 9 P.M.
Helen Grace Candies
1339 El Prado

ROSE TATTOO

ACTING LAUDED; PLAY IS WRONG FOR TORRANCE

By MILDRED HUNT

Nadine Farrar Nickol, well known singer and voice teacher of Torrance, extended her versatile talent in the role of Serafina Delle Rose in the play, "Rose Tattoo" at the Friday evening performance in the Civic Auditorium. The play is being presented by Accent: Theatre, a community drama group.

In the difficult role of an emotional Sicilian woman, Mrs. Nickol played the part in a realistic manner in effecting the rolling accent, rapid fire manner of speech and abundant display of spasmodic gestures. This she did as she padded bare-footed back and forth across the stage, in the majority of scenes.

With the unfolding of the off-beat drama, the well rounded Serafina Delle Rose appeared in the majority of scenes clad only in a white under slip which was a contrast to her later scenes when she wore a bright red, full skirted gown highlighted by a matching rose in her hair. In her full dress appearance, she was waiting the return of Alvaro Mangiacavallo, ardently played by Paul Shelley.

Another stellar performance was given by Edward Cante in the role of the harassed priest who was attempting to bring reason and understanding into the conflicting lives of the Sicilian woman and her teenage daughter, young Rosa, played by Pamela Carlisle. Cante was a convincing cleric both in appearance and direct manner of acting; aided by a clear, penetrating voice.

Other members of the cast included: Ann Louise Heinlein, Bobby Pulliam, Barbara Bennett, Jimmy Pulliam, Patricia Bennett, Sheila Doolittle, Lola Kelley, Mary Lee Peters, Beverly Dyer, Eileen Pulliam, Alice Perkins, Colleen Turgeon, Fay Newman, Hank Heinlein, Ann Humphreys, Phyllis Foss, Dora Heinlein, Lowell Brown, Kenneth Lawless, Marion Humphreys and Paul Harestad.

Just inside the door of the hall, an improvised foyer had been set up by means of an arrangement of sections of screen on which was displayed pictures of the cast. This enclosure was softly lit by pink and orchid candles burning in silver candelabra. Acting as hostess was Mrs. Allen Fyeast wearing a tulle and taffeta formal gown.

At the intermission, coffee was served at a snack bar by Mrs. Ken Carlisle and Connie Turner. Ushers were Barbara Carter and Violet Popovich. Accent: Theatre could add

greatly to their popularity in the selection of more wholesome plays to be presented to local audiences. The majority of the Torrance population are made up of solid citizens whose preference in plays do not run to the daring or off-color variety.

The use of profane language and the trend to play up the lower human emotions coupled with suggestive dialogue, may be considered the peak of theater art on Broadway or Greenwich Village, but hardly in a family town like Torrance. During the performance of "Rose Tattoo," a member of the audience was heard to utter a gasp during a risque scene.

If the more wholesome type plays are made the rule by the local group, perhaps many of their future presentations will not go begging for full house audiences.

Soroptimists Hear Founders Day Speech

Lucille Armor of Santa Monica, regional director of Region 1 Pacific region of Soroptimist International was the guest speaker at the meeting of the Torrance Cardiac club Monday at noon. Since Soroptimist marked its 34th year on Oct. 3 the speaker's topic was "Founders Day."

Eddie Walthers, president, gave a report on the International Understanding and Good Will Council she attended at the Mayfair Hotel and Dr. Virginia Tyler reported on the Public Affairs Luncheon she had attended also at the Mayfair Hotel.

Since Soroptimist International is 34 years old, each member contributed 34 cents to the scholarship fund which enables the organization to provide three \$3,000 scholarships for exchange students.

Mary Limberger won the door prize. Lynette Mann, supervisor of the Visiting Nurses Assn. was a new member present and guests were Mabel Soule's mother from Victorville and Miss M. Fatout of the YWCA.



LOOKING OVER WHITE ELEPHANT DISPLAY... for their fourth Annual Country Fair and Pancake Breakfast to be staged next Sunday morning, Oct. 16, at El Retiro Park are these members of the Las Vecinas Woman's Club. They are from left, Mrs. A. J. O'Keefe, Mrs. Curtis Cool, Mrs. Robert Hoag, Mrs. John Cooley and Mrs. James Byrd. Proceeds from the affair and from a baked goods sale on Saturday, will go to the club fund for Youth and Welfare work. Dusty Walker, TV singer and Carolina Cctton, and her accompanists will entertain.

Firemen's Ball Set for Saturday Eve

Final plans for the Firemen's Ball to be held Saturday evening at the American Legion hall were made at the meeting of the Torrance Firefighters held at the home of Mrs. Harlan Whitacre, 2240 231st St.

Music for the dance, which is open to the public will be furnished by the "Alley Cats." Mrs. Milton Langum reported on the CSFA conference held at Catalina last month. Attending the session were Messrs. and Mrs. W. L. Christian, C. R. Flagg, D. L. Loy, S. A. Martin, F. Tulle and W. R. West.

Harry Kliner, representative for the Junior Chamber of Commerce presented the Firefighters with a check for their support in the recent Torrance Community Fair.

A nominating committee was selected by the group. The auxiliary will hold election of officers at the November meeting. Refreshments were served by the hostess and her co-hostess Mrs. E. R. Katzorke.

The next meeting will be held at the home of Mrs. C. R. Flagg 1620 Hickory.

PIANOS TO RENT BUY
NEW BALDWIN USED
FICHT PIANO CO.
611 S. Gaffney St. SAN PEDRO TE 2-6061

Las Vecinas Will Stage Annual Pancake Breakfast Sunday Morn

Next Sunday morning, the smell of pancakes, coffee and sausages will waft through the breeze at El Retiro Park when Las Vecinas Woman's Club stages its fourth annual, Pancake Breakfast and Country Fair, to build up funds for their Youth and Welfare committee. Breakfast will be served from 7 a.m. until 2 p.m. The breakfast menu will consist of hot cakes, sausages, toast, butter, jelly, milk, coffee and orange juice.

There will be four booths this year besides the usual Country Store, Homecraft, white elephant, Penny Pitch and Baked Goods booths will offer tempting items. Main attractions in the way of entertainment will be the appearance of Dusty Walker, TV singing star and Carolina Cctton and her accompanist. Cartoons in the canteen will also

FUCHSIA GROUP HEARS SPEAKER

"Fall Flower Arrangements" was the topic for the evening when Chelsea Hendrix spoke to the North Torrance Fuchsia society Tuesday evening. Hendrix, well known in the area for his unusual and beautiful arrangements and winner of many ribbons for his entries in local flower shows, provided an educational and entertaining evening.

Due to the building program going on at McMasters Park the Fuchsia society meet at the Verberg Dairy Rumpus room.

COMMITTEE MEET

Friendship committee of the Women of the Moose will meet this evening at the home of Marguerite Baudin, 2208 Arlington, at 7:30 p.m. All committee members are urged to attend. The library committee held its meeting Oct. 7 at the home of the chairman, Ermanell Benton, 2107 Gramercy. Five members and two guests were present.

Decorations For Holidays Are Studied

A special feature of the monthly meeting of the South Bay Alliance of Delta Delta Delta held Wednesday, at the Torrance home of Mrs. Donald C. Kane, was a demonstration of Flower Arrangements for the home and holiday decorations by Mrs. John Chadwick of Chadwick Gardens.

Mrs. Chadwick is a graduate of Iowa State College where she majored in clothing, textiles and costume design. One of her specialties is the design of corsages to match individual outfits.

A Sussex Trug Basket complete with floral arrangement was awarded as a doorprize. Mrs. Keith A. Crown was program chairman. The basket is a piece of English handcraft which has been made for over 100 years by one family and is imported by Chadwick Gardens from Sussex, England.

A business meeting followed the program presided over by Mrs. James Colee, president. Mrs. Charles W. Russell and Mrs. Kane, both of Torrance, were co-hostesses at the meeting.

reduce for fall fashions

Stauffer guarantees a lovely new figure quickly, easily, safely

Don't wait until you invest in a new fall wardrobe to start thinking about your figure. Let us give you a beautiful new figure first - then you'll look even lovelier in your new fall clothes.

3,000,000 SUCCESS STORIES. More than three million women have used the Stauffer System to gain a slim new figure.

YOU GAIN OVER-ALL BEAUTY. The Stauffer System gently molds you into alluring contours... firms, tones and trims hips... shrinks bulging tummies... slims thick ankles... aids in creating a new, youthful posture. (All without the use of drugs, heat, exercise or strenuous diet. You don't even dress.)

FREE TRIAL
Phone Frontier 5-8517
— No Obligation —
Hours 8 a.m. to 9 p.m.
Stauffer System
1708A S. Catalina Redondo
OPEN SATURDAY 8 A.M. to NOON

Choose a

maidenform bra

...and have the figure of your dreams!

Pre-lude

Such a beautiful... beauty-giving bra! Designed with the exclusive contour band that curves "under-and-up" between the cups... to give you a completely new kind of uplift! Undreamed-of comfort, too... because Pre-lude stays smoothly in its proper place, hugs snugly to your figure! White embroidered broadcloth; A, B and C cups... 2.00

Chansonette

America's favorite bra... and the reason is easy to see! This exciting, spoke-stitched bra accentuates as it rounds! The secret is in the center of the bra-cups: a special spoke-wheel design that gives a lift to every line! White stitched broadcloth; A, B and C cups... 2.00

USE OUR LAY-A-WAY FOR CHRISTMAS, OR IF YOU CHOOSE, OUR CONVENIENT BUDGET PLAN!



2.00 each

Woor's WOMEN'S WEAR

1274 SARTORI TORRANCE

ANNOUNCING... the FIRST and ONLY COMPLETELY AUTOMATIC Sewing Machine!



NO DISCS TO CHANGE! ... even threads itself!

Here is the new miracle sewing machine to modernize home sewing! You just turn a dial to switch from stitch to stitch... just pull a lever to thread it. It makes beautiful sewing so simple, nothing you make has that "home-made" look. You'll tailor seams, buttonholes, and hems like an expert. You'll embroider, monogram, do hundreds of decorative stitches that will make your clothes and your home look original and distinctive!

SEE THIS FABULOUS NEW PFAFF AUTOMATIC! Stop in for a fascinating free demonstration today! \$119.50
Pfaff Sewing Machines as low as

Take Advantage of NEW HIGH TRADE-IN NEW LOW TERMS
VA KAY

YARDAGE CENTER
Dressmaking • Designing • Alterations
1614 CABRILLO AVE. FA 8-4666
Patterns: Butterick & Simplicity (after 6 p.m. call FR 4-4203)