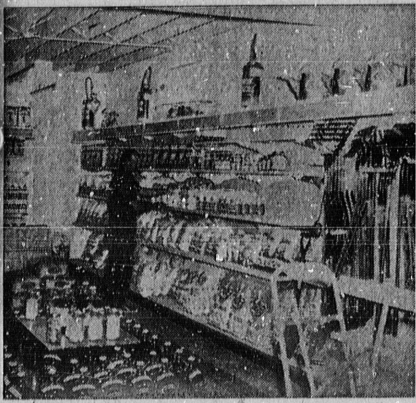


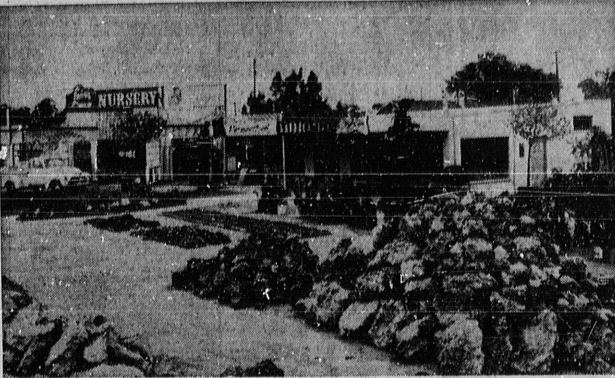
# THE TORRANCE HERALD HOME AND GARDEN



ANYTHING FOR THE PLANT . . . Showing off the large stock of supplies designed to keep plants healthy and happy is Jim Oehlman, of the Ladera Nursery.



COMPLETE GARDEN SUPPLIES . . . Reg Whitney points out some of the extensive stock of garden supplies of all types at the Ladera Nursery, which will have its grand opening this week end.



LADERA NURSERY  
... Grand Opening Set This Week End

## Ladera Nursery Sets Opening

The Ladera Garden Shop, featuring a complete non-stop nursery, an extensive selection of garden equipment, as well as a large tool rental department, will hold its preview grand opening this week end on its attractive site at 25234 Crenshaw Blvd.

Co-owners Dick Oehlman and Reg Whitney said that the opening event will start today and continue through Sunday. A host of special bargains as well as free gifts will greet well-wishers.

Located on a commercial acre facing Crenshaw Blvd., just south of Lomita Blvd., the firm will operate a modernistic 40x40 foot store as well as large, attractive outside area.

Featured in the store will be complete lines of insecticides and fungicides; Boyce garden tools, which carry an unconditional guarantee; top quality Bandini fertilizers; grass feeds, including both brand names and the nursery's own long-proven blends; nationally known brands of sprinklers, garden shears, hose and sprayers; power lawn mowers and power sprayers.

Also featured inside the store are complete lines of fall and spring bulbs for garden beautification, as well as extensive displays of interior plants and flower and vegetable seeds.

The beautifully appointed exterior displays tropical and modernistic plantings with the use of the new trend to rock and raised beds.

Featured are 30 varieties of carnations, azaleas, plants, and shrubs of every type.

Of particular note is a large display of bedding plants for those who do not wish to start seeds of their own.

"Every thing from a soldering iron to a steam shovel" is the slogan of the large rental department, a branch of Rentmaster Tools, one of the largest in the business in the western states.

Oehlman, a fourth-generation nurseryman, entered the business shortly after World War II and is now starting his third nursery.

Real gardening enjoyment comes from the planning and planting of perennial borders. All sorts of form, color and texture patterns can be employed with various perennials—the result a play or drama throughout the growing season of muted tones, growing richer and fuller and then mellowing and dying back.

perience in the business. He served as assistant manager of the Sears garden shop in Oakland before coming south. He recently was with a local nursery for two years. His background also includes seven years with the forestry service.

"We are making the Ladera Garden Shop the South Bay's most complete one-stop nursery," Whitney said. "With quality and service, we will help local residents develop their fine homes for outdoor living."

**ETOW'S 1<sup>c</sup> ROSE SALE!**

**JUST IN TIME FOR FALL BLOOMS**

You will never see such a selection as we have to offer for this Price!

Buy one at the regular Price and get another one of the same value for only . . .

**1<sup>c</sup>**

All Roses Cash and Carry

**ETOW'S 101 NURSERY**

Pacific Ave. and Guadalupé Redondo Beach

FR. 4-5588 HOLLYWOOD RIVIERA BRANCH

1870 South Elena FR. 5-3012

## TWIN BROTHERS WIN DRAG MEET

Two Torrance hotrod enthusiasts, 17-year-old twins, Robert and Richard Tapia, of 930 W. 223rd St., took the first place trophy Sunday in drag competition at the Santa Ana Drag Strip.

The brothers sent their '32 Ford, powered by a '48 Mercury engine, over the quarter-mile course in the best time of 98.03 miles per hour. They captured the trophy in the street roadster class for their effort.

Both boys are seniors at Narbonne High School and have been interested in auto racing for some time. They usually took to some drag strip in the Southland every Sunday for races.

**LANDSCAPING?**  
DO IT YOURSELF FROM A COMPLETE DESIGN OF YOUR PROPERTY.

LORING L. BIGELOW  
LANDSCAPE ARCHITECT  
3000 NEWTON STREET  
TORRANCE  
DA 6-5044

## Tulips, Hyacinths Can Make Both Formal, Informal Gardens Bright

and planted effectively both in formal or informal arrangements and two of the best "double-personality" bulb flowers for such plantings are the tulip and the hyacinth.

Though they are both most often thought of as formal, rather dignified looking flowers, Tulips and hyacinths can be very pleasingly planted in drifts, scattered in pairs or groups along paths, in amongst rocks, in clumps under trees. And with the wide range of colors both flowers afford, your garden need never be a drab place even in early Spring, says the California Association of Nurserymen.

**Plant Soon!**

Both the tulip and the hyacinth should be set into the ground in the next few weeks. The hyacinth (Hyacinthus Orientalis) enjoys light, enriched soil and plenty of sun, although it will tolerate moderate shade, and can be planted through December. Set the bulbs in five or six inches deep and that far apart from each other. To enrich the planting soil add bone-meal close to planting time. Put a handful of coarse sand at the base of each bulb when planting in heavy soil.

Ground planted hyacinths will burst open in blooms of cream, white, pink and various blues and purples in March and April. You can force earlier blooms, by January, by growing in pots. The variety of Roman Hyacinth (athus) blooms with narrow leaves and loose spikes of white and blue flowers in February.

**Tip Above Soil**

For first-of-the-year hyacinth blooms plant one bulb to each deep five inch pot, so that the tip of the bulb protrudes above the soil in the pot. Sink the pots in peat or shavings and cover with three inches of peat or shavings until roots appear through the draining holes of the pot. Then set the pots in light and if buds appear while the stems are still short place cardboard collars around the plants to draw the stems up. These pot-grown hyacinths can be placed in terraces or patios or brought into the house to add warmth and color.

The variety of blossoms and colors in the tulip family is very great . . . and you have your pick of blooming time, too. Tulips begin blooming in March and continue through April. Culture requirements vary some for each type. In general, however, tulips of all types appreciate full sun except in areas where May temperatures are very high. Plant the bulbs four to five inches apart and two and one-half times deep as the

bulb is wide—or deeper in warm winter areas where planting should be delayed from the usual September and October period to November.

**Outstanding Tulips**

Some of the most outstanding tulips available for all sorts of planting effects are the Species—the Waterlily (Kaufmanniana) lily-shaped, red and yellow and its hybrids in combinations of yellow, red, and white; the eichleri, scarlet with a black base edged with yellow. In the Early Tully type, the Double Earlys bear peony-like flowers in shades of yellow, red, orange and white. Parrots of scarlet and green, scarlet and white; bright blue.

Choose your hyacinth and tulip varieties from your local nurseryman and plant for beautiful Spring bulb gardens now.

## Perennials Used In Many Ways by Local Gardeners

Described as plants "that die down in winter after storing food in their roots for re-growth of tops the following Spring" and, here in California, especially as "plants whose leaves are attractive the year around," perennials are an increasingly popular class of flower and shrub.

Reasons for this popularity are many. Perennials are easier to care for than annuals; they can be used in many planting patterns throughout the garden; and many perennials remain vigorous throughout California's mild winter.

The turn to perennials for planting often comes in a gardener's career as he seeks to cut down the amount of necessary cultivation required by individual plants. Or, often perennials are called upon to solve difficult planting situations in a California garden . . . flower beds inset into a paved patio . . . a very narrow area along a driveway or in front of a hedge . . . a large area too spacious to give much attention to, that turns an unattractive brown in the summer and needs screening.

Excellent perennial choices for narrow beds, says the California Association of Nurserymen, are the violet, primrose, columbine, phlox, geranium and chrysanthemum, among many others. These should be planted in the next few weeks to get them well started before winter

arrives. Substitute the following perennials for annuals to achieve mass color effects: shasta daisies, xviolas, coreopsis, chrysanthemums.

Real gardening enjoyment comes from the planning and planting of perennial borders. All sorts of form, color and texture patterns can be employed with various perennials—the result a play or drama throughout the growing season of muted tones, growing richer and fuller and then mellowing and dying back.

**BUILD NOW**

**FENCES AT BIG SAVINGS**

REDWOOD FENCES PATIOS PLANTERS

100% FINANCING

**GARAGES DE LUXE MODELS**

**\$475 on your slab \$620 including slab**

Licensed and Insured Contractors. Quality workmanship & materials!

**PHONE NOW FOR FREE ESTIMATE**

**ALL STATE BUILDERS AND FENCE CO.**

1019 W. ROSECRANS, GARDENA

DAVIE 9-7551 OSBORNE 5-7186 NEWMARK 1-5192

**We have Everything for FALL GARDENING**

**FALL IS THE BEST TIME TO PUT IN YOUR NEW LAWN**

**DICHONDRA SEED 2 2/5 1/4 lb.**

**GERMAN PEAT MOSS 395 bale**

**NOW ON SALE Choice selection of Fall Bulbs . . .**

**BAMBOO RAKES 35c ea.**

Visit our lovely lush Tropical and miniature Gact. Gardens. You'll get many unique ideas for your landscaping!

"If It Grows—We Stock It"

**GARDEN CENTER NURSERY**

NURSERY STOCK \* LANDSCAPING \* HARDWARE

Corner of 182nd & Western Ave. DA 9-2584.

**MONTH END SALE**

20% OFF REGULAR PRICE ON FLOOR SAMPLES!

**RATTAN — CONTEMPARY MODERN FURNITURE**

**HONG KONG SEA GRASS 23¢ sq. ft.**

**BAMBOO ROLL-UP DRAPES 8¢ sq. ft.**

**LAMPS OFF 50% Reg. Price**

Custom CORNICE BOXES Made to Order

★ Rattan ★ Wrought Iron ★ Peel Furniture

**Mira Costa Home Shop**

200 S. Sepulveda Blvd., Manhattan Beach FR 4-4818

Closed Thursdays

**MOST COMPLETE NURSERY IN SOUTH BAY AREA**

**LAWN SUPPLIES ROLLER & SPREADER LOANED FREE . . .**

**★ Weekly Special**

**CAMELLIAS 1 GAL. . . \$1 5 GAL. \$1.50**

**FUCHSIAS 1 Gallon 3 for \$1.00**

**FALL BULBS LARGE SELECTION**

**Palos Verdes Begonia Farm**

PHONE FRONTIER 5-2447 4024 PACIFIC COAST HIGHWAY WALTERIA (Next to Smith Bros. Fish Shanty)

**that decorator look!**

**INEXPENSIVELY YOURS**

**CUSTOM-CRAFT DRAPERIES**

Select your fabrics from our extensive collection of modern, provincial, tropical and traditional designs—all in striking decorator colors. Custom-made in any lengths and widths to fit your individual window measurements. Perfect in every detail and reasonably priced.

**Van's Maple Shop**

2083 TORRANCE BLVD. FAIRFAX 8-3352

UPHOLSTERY, DRAPERY, MATTRESS SERVICE OPEN FRIDAY NIGHT UNTIL 9 P.M.

**perfection pays**

**TALK ABOUT ECONOMY:** They say that "nothing succeeds like success." And an electric range will furnish full proof of it, with an unbroken series of cooking successes to make big savings in your household budget. Food costs money—and the elimination of costly cooking failures will more than pay for the very few cents worth of electricity which assures you of perfect results every time. see your dealer

**ELECTRIC COOKING IS TODAY'S BIGGEST BARGAIN!**

**SOUTHERN CALIFORNIA EDISON COMPANY**