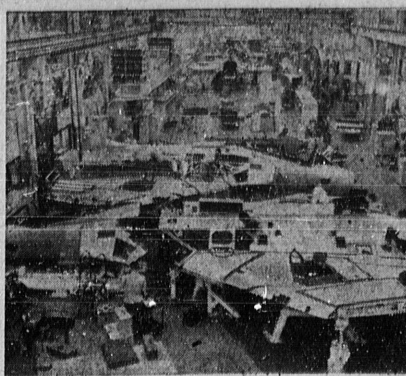
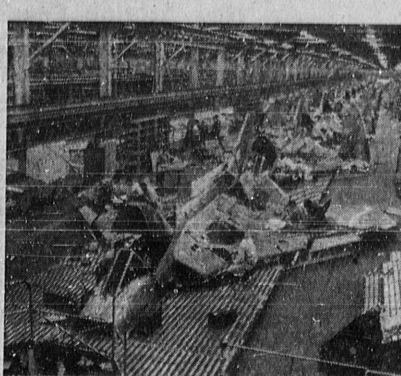


FUSELAGE NOSE AND INDUCTION SCOOPS . . . are joined to make a major sub-assembly. All wiring for the pilot's cockpit and the radio compartment is installed at this point. Jig-mounting is such that all areas can be reached without difficulty.



JOINING JIG . . . Nose section with induction scoops is joined to the two center wing sections which have been capped by a dorsal panel.



INSTALLATIONS LINE . . . Designed for continuous work above and below a stationary platform, the installations and operations line provides both speed in assembly and economy of production.



CENTER WING SECTIONS . . . Mounted on jigs for easy accessibility in construction, two of these sections will form the thin, swept, low-aspect-ratio wing. A similar method is used for the folding outer wing sections.

Obituaries

Willa Cox Snyder

Final rites for Willa Cox Snyder, 69, a resident of Torrance since 1938, were held Friday, Sept. 23, 1955, at the funeral home of Rev. H. Milton Sipe officiating. She died Wednesday in Torrance Memorial Hospital.

A native of Weston, Mo., she lived at 811 Beech St. She lived in Hydro, Okla., before coming here. She and her husband, Harry, had been married for 45 years.

Mrs. Snyder was a member of the First Christian Church, the Eastern Star, and the Royal Neighbors of America.

Burial was in Green Hills.

Beside her husband, she is survived by a son, Oliver Kenneth Snyder, of Torrance, and a sister, Mrs. Joseph Lamar, of Weston, Mo.

Employment Manager at Conference

Winona Ellis, manager of the local office of the Department of Employment, will represent the Torrance office at the Department of Employment management conference in Sacramento, Sept. 27, 28 and 29. It was announced Saturday.

Stressing the theme "Public Service Is Our Business," the three-day conference will feature state and national experts in employment security administration. Highlights of the meeting will include an address by Governor Goodwin J. Knight at the laying of the cornerstone of the department's new headquarters building in Sacramento, Sept. 28.

The part which the Department of Employment will play in manpower mobilization in the event of national emergency will occupy a prominent place on the agenda, as will also studies of current economic trends and their administrative implications.

H. W. Stewart, director of employment, will be general chairman for the conference, assisted by W. A. (Jimmie) Hicks, deputy director of the department. MARVIN WALKER—14

Pvt. Marvin Walker, son of Mr. and Mrs. Lawrence Walker, 26614 New Hampshire St., has returned to Torrance for a 15-day leave after completing basic training at Fort Ord.

A 1932 graduate of Antioch High School, Walker has been in the Army since July. He will report for technical training at the Ordnance School, Aberdeen Proving Grounds, Md., following his leave.

C & I Chest Committees Announced

John Ebbinghouse, commerce and industry chairman for the 1955-56 Community Chest campaign in Torrance, announced today the names of 14 Torrance businessmen who have agreed to assist him as commerce and industry committeemen for the Red Feather appeal this fall.

To aid in soliciting business firms in the city are Ed Maulding, Glenn Pfeil, Steve Avera, K. L. Anderson, Harvel Guttenfelder, Harry Harper and Don Hyde.

Also soliciting for the Community Chest will be Bernie Lee, Robert Leech, Russ Lund, Otto Kresse, John Schmidt, John Tweedy and John Melville.

Ebbinghouse also announced the names of six Torrance industries which have already appointed an employee Chest chairman to solicit employees during the coming Red Feather appeal on behalf of 168 agencies. The firms and employee chairmen are: Prudential Insurance Company, William J. Bryant; Smith Brothers Fish Shanty, Ann Lane; Ebbingshouse, John Ebbinghouse; R. H. Schneider; Chicago Bridge and Iron Company, Joe G. Arnold; Torrance Memorial Hospital, Jean Kresse, and American Rock Wool Corporation, Ernie Hearron.

New Production Technique Needed for Navy Skyray

A big step forward in aircraft production production methods was achieved at the Torrance Douglas plant for the supersonic F4D Skyray by the use of a stationary platform with movable fixtures instead of individual dollies on the final installations line. It is the first time such an approach has been used in the aircraft field.

Ordinarily an airplane has the conventional wing, fuselage, and tail. Being a modified delta, with the fuselage consisting only of the nose section, the F4D used a production flow of different concept.

No radical changes are incorporated in minor sub-assembly and major sub-assembly work. Conventional jigs are used for the construction of the center and folding outer wing sections, the nose section, vertical stabilizer, elevons, and wing slats. Complete hydraulic, electrical, and mechanical installations are placed in these assemblies. This work is done on a decentralized basis with each department responsible for its unit.

New Techniques Used

In the joining and mating of major sub-assemblies, new techniques are used because of the nature of the aircraft. The center wing sections and nose and induction scoops are fitted on a mating jig and riveted and bolted together. The two wing sections make what normally would be the fuselage. They are capped with a dorsal panel over the engine area. In the final steps, the vertical stabilizer and inner wing slats are attached.

Speed Possible
In the final installations and operations

Personality Class Plans Fashion Show

An open house and fashion show for the personality and appearance classes will be held at the Torrance YWCA next Thursday, coffee and refreshments will be served at 10:30 a.m. in the lounge and the ladies are cordially invited to attend.

Sponsored by the Torrance Adult School and instructed by Miss Mary Desere, charm experts will model fall costumes and demonstrations of accessories and color will be given as an added instructive feature.

Enrollments for class is still open and students may enroll when attending the Open House or at the time of the next class. The Personality Class is scheduled each Thursday morning from 9:30-12:30 at the YWCA.

Students taking part in the fashion show are Maurine Goar, Emma Lee Cadwell, Pat Smith, Enola Burdick, Marquerita Lewis, Mildred Johnson, Jackie Winn, Lynne Johnson, Irene Williams, Helen Christenson, and Verna Elmore.

Housewives Warned About Home-Canning Fresh Tuna

Housewives who have been buying tuna (albacore) direct from the fishermen in California cities were cautioned yesterday by the State Health Department not to home-can fish unless they use a pressure cooker, and then only if the cooker is operated correctly.

The warning was issued by the Department upon learning that some buyers have been mistakenly advised that the "hot water bath" is a safe method of canning fish.

Cook 110 Minutes

According to Dr. Malcolm H. Merrill, state director of public health the deadly poison of botulism can develop in any meat, fish, or low-acid vegetable which is put up by either the hot water or oven techniques often used for fruits and other acid foods. Tuna can be sterilized only with a pressure cooker, in which a minimum of 10 pounds pressure is sustained for 110 minutes. Moreover, no container larger than one pint

line by the nature of the arrangements. Continuous work is practical from above and below the stationary platform. All hydraulic, electrical, and mechanical installations are connected while the airplane rests on its cradle on the tracks. Elevons and landing gear also are attached. Navy and company inspections are completed during the aircraft's travel along the line.

Each airplane is transported by truck to the hangar location at International Airport for installation of a J-57 engine, radar, and armament.

After exhaustive flight tests by Douglas and Navy pilots, the F4D is ready for delivery to follow a long line of Douglas airplanes which have served the United States Navy.

Elks to Host Official From Grand Lodge

The Torrance Elks Lodge will act as host to Virgil Kingsley, district deputy grand exalted ruler of California, this Wednesday at the Elks Hall, 1951 W. Carson St.

He will confer with officers and committee chairmen of the local lodge from 5 to 8:30 p.m. A dinner will be served at 8:30, and afterward, Exalted Ruler Joseph E. Yates will initiate a class of candidates into the order.

Yates will be assisted by his corps of officers, and the drill team from the Redondo Beach Lodge. Ceremonies will honor the visiting officer.

POLICE SHOW SET FOR NOVEMBER 25

The Leighton Noble Orchestra has been signed for the annual Torrance Police Show to be presented at the Long Beach Auditorium on Friday evening, Nov. 25.

Tickets are now on sale by members of the Torrance Police Department for the variety show and dance. The proceeds of the annual event go into the police fund to be used for youth work and other activities of the association.

LAKE BORDERS

Lake Michigan is the only Great lake to lie wholly within American borders.

Teachers to Hear of Smog

"Air Pollution Control in Los Angeles County" will be the topic of a meeting of the Los Angeles County Teachers' Institute to be held in the Torrance High School Auditorium, Wednesday, at 7:30 p.m. Open to all teachers and PTA

members, the meeting will feature Martin A. Brower and William J. Mellor, information assistants for the Air Pollution Control District. Torrance is the host city for this monthly meeting.

Spotlight Lifted

A spotlight valued at \$14 was taken from his car as it was parked in front of his house, James Robert Dudley, of 24629 1/2 Moon Ave., Lomita, told sheriff's deputies Thursday.

Torrance Engineer Philadelphia Speaker

Joseph K. Siap, 3914 West 176th St., has returned from Philadelphia, where he was a featured speaker, at the annual meeting of the Association for Computing Machinery at the University of Pennsylvania.

Slap, who is employed by Northrop Aircraft, as a group engineer for computing and numerical analysis, presented a comparison of analog and high speed digital computing for a specific aeronautical design problem.



TWENTIETH ANNIVERSARY SALE

CALIFORNIA
APPLESAUCE
303 CAN
10¢

FRADELLIS
FROZEN
CHICKEN or
ROAST BEEF
DINNERS
59¢

CHALET—2-lb. Loaf
CHEESE 69¢

LOWEST PRICES

Our policy is to LOW-PRICE EVERY ITEM . . . you can't miss our low prices! You see them wherever you look, because they are on every shelf . . . on every package. And it stands to reason, the MORE low prices, the MORE money you save . . . yes, you'll eat better . . . save more . . . shopping at JIM DANDY, where every item is low-priced.



Jim Dandy Quality Meats

CHUCK ROAST

U.S.D.A. "CHOICE" & "GOOD"

29¢ POUND

LEAN—FRESH

GROUND BEEF 29¢ lb.

SLICED BABY BEEF

BEEF LIVER 43¢ lb.

RIB LAMB CHOPS

SWIFTS SELECT & GOOD

69¢ lb.

Jim Dandy Farm-Fresh Produce

BANANAS

FINEST CENTRAL AMERICAN

2 lbs 25¢

Limit Rights Reserved—Sales Tax Added to Taxable Items

GIVE THE UNITED WAY



Jim Dandy MARKETS

OPEN TIL MIDNIGHT everynight
2515 TORRANCE BLVD., Torrance
1516 Pacific Coast Hwy., Redondo Beach

PRICES EFFECTIVE MON., TUES., WED., SEPT. 26, 27, 28