

Planners Approve 843 New Homes for Torrance

FIRST — In Circulation — In Readership — In Advertising

TORRANCE HERALD

TORRANCE'S ONLY COMPLETE NEWSPAPER—WITH OFFICE AND PLANT AT 1619 GRAMERCY AVE., TORRANCE

It's So Easy

... to place a low-cost HERALD Want-Ad. Just phone FA-84000 and ask for Ad-Taker. Reach 120,000 readers today

Phone

FA 8-4000

Published Monday and Thursday—Entered as second class matter Jan. 30, 1914, at postoffice, Torrance, California, under Act of March 3, 1879.

41st Year—No. 49

10¢ per copy

TORRANCE, CALIFORNIA, MONDAY, JUNE 20, 1955

CIRCULATION OFFICE FA 8-4004

12

12 PAGES

STORM DRAIN PROJECT HURRIED

Planners, Audience Eye Electric Plant, Zoning

Both the Planning Commissioners and the audience were under misapprehension Wednesday night.

Commissioners thought the large crowd which turned out came to attend the hearing on Crenshaw Blvd. rezoning.

The audience, most of whom hadn't come on the Crenshaw matter, thought that

the Edison Co. was going to put up a steam plant near Sepulveda Blvd. and Madrona Ave.

As the meeting progressed, both Commissioners and audience found out they were wrong.

Hearing Quiet

Instead of the expected fireworks at the hearing on Crenshaw Blvd. rezoning, between Sierra Way and Monterey Ave. relative quiet marked the hearing.

Commissioner Lynn pointed out that the Los Angeles Regional Planning Commission has plans which call for a 100-foot right-of-way along Crenshaw, with 76 feet of paving. The change would bring the street, 80 feet wide, closer to homes.

Three residents — Mrs. Thomas Babbitt, Mrs. Theresa Denton, and Mrs. Irene Baker — told the Commission that re-

zoning from residential to commercial would raise the taxes and insurance for homeowners.

Mrs. Babbitt felt that no rezoning should take place until the street is widened. At the present time, lots are too small for any major business use, she declared.

Commissioner Burt Lynn said his committee had met with the residents, and found that 80 to 90 per cent of them below Sierra Way were in favor of rezoning. Commission President Beverly Smith asked Lynn's committee to meet with residents again to study the situation, and set the next hearing on July 20.

When the hearing began on the Edison Co. proposal to put a 16 by 24 relay station on the south side of Sepulveda near Madrona Ave., the Commissioners discovered why the crowd had come. Somebody had told them that a steam plant was going to be built, not a relay station.

A spokesman for the group, Glen Child, of 3402 W. 227th St., said the group had heard rumors and came as observers at the meeting.

Edison District Manager L. E. Jenkins said that the electric station proposed was designed

to reduce the current from 16,000 volts to 4,000. The station would consist of a building and other equipment, all of which would be surrounded by an eight-foot chain link fence, he said. Facilities might require enlarging later, he explained.

A second hearing on the matter will be held later.

Plans Turned Down

Dr. Chesley R. Houske's application for a variance to rearrange parking facilities and construct a building to house X-ray facilities at 2516-18-70 Torrance Blvd. was turned down by a 7-1 vote. Commissioner Thurvin Fleetwood dissented and Burt Lynn abstained.

A second hearing will be held July 6 on the request of Herman O. Barton, of 2008 W. 174th St., for rezoning for manufacturing.

Commissioner Lynn said most surrounding property owners would prefer a C-2 (commercial) zoning for the area.

Barton indicated that he would like the M-1 zoning for his property for a warehouse and business. The property adjoins other M-1 land.

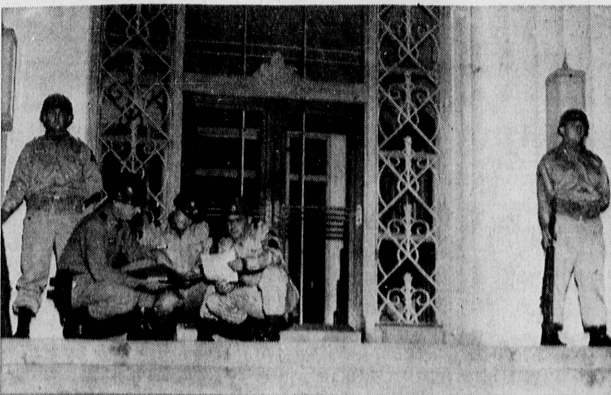
E. J. Wallin Jr., of 17318 Arlington Ave., said Arlington Gardens homeowners oppose the change of zone.



THE LATEST WORD . . . Radloman R. J. "Bob" Baldwin (right) hands a message received over the city's shortwave radio to Police Chief Willard Haslam (center) while George Powell, assistant director of Civil Defense for the city, looks on from the left. This was the focal point for the city's participation in the three-day "Operation Alert."



PLANNING FOR DISASTER . . . City department heads and utility experts work out problems of water supply, sewage disposal, and other matters brought about by disaster situations. Shown here in the Juvenile Department conference room are (seated left to right), Engineering Aide Robert G. Rider, Bus Superintendent Marshal Chamberlain, City Engineer Ronald W. Bishop, and Street Superintendent Ralph Perkins. Standing are Park Superintendent Casper Clemmer, Col. A. U. Turner, U. S. Engineers (Ret.), and Battalion Chief Neil Whitney.



STRATEGY Huddle . . . Capt. D. J. Horlander, commanding officer of the Torrance company of the National Guard, (kneeling left) confers with two members of his company, Sgt. G. A. Archer and S/Sgt. A. B. Bergher during "Operation Alert" here Wednesday evening. Standing guard at the entrance to the City Hall is Pvt. Philip Mullins.

Drainage Plan Gets Priority

High priority for the Flood Control Project 242 in North Torrance has been recommended by Supervisor Kenneth Hahn.

Flood control officials have been alerted by Hahn to process final construction plans for the Arlington-Glenburn Avenues bond issue storm drain as soon as the plans are returned by the city.

Torrance City Engineer Ronald W. Bishop said he expects to submit final plans to the Flood Control District this month.

The sum of \$362,600 was allocated for the project which is part of the \$178,000,000 bond issue for flood control passed by the voters of Los Angeles flood control projects planned County in 1952.

It is the first of three major projects for Torrance. Others are No. 241 in downtown Torrance, and No. 245, in Lomita.

In the North Torrance project, the section of the drain which passes under 174th St. is complete, having been constructed by the State Highway Department at the time 174th was built.

Two Sections Planned

The project will be built in two sections, one draining into Dominguez Channel from the north, the other from the south.

The general plan contemplates:

Construction of a reinforced concrete pipe on Arlington Ave. from Redondo Beach Blvd. to the channel; and construction of a reinforced concrete pipe and box on Glenburn Ave. from approximately 800 feet south to 175th St. to 170th St. in a 25-foot easement from 170th to Dominguez Channel.

Will Connect

The Arlington section will connect with the Redondo Beach Blvd. drain planned by Gardena, and will carry water from the latter to Dominguez Channel.

Hahn pointed out that maximum efficiency of the drains can be secured if the communities affected construct the necessary laterals leading to the drains.

3 Local Men Get Degrees

Three Torrance men received degrees from the University of California at Santa Barbara Saturday in the first commencement ceremony held on the new 408-acre campus of the college.

C. Jerry Downing, of 17039 Glenburn Ave., and K. Duane Mittan, of 719 Cota Ave., received bachelor's degrees in physical education while Yovan John Popovich, of 2067 W. Carson St., got a degree with a major in social science.

Concussion Suffered in Car Wreck

A Lawndale man suffered a brain concussion Friday when his car collided with another at the intersection of Hawthorne and 171st St.

Frederick Lee, 31, was taken to Harbor General Hospital, where he is still hospitalized. Also suffering minor injuries in the mishap were Sally Sinderon, 17228 S. Crenshaw Blvd., driver of the other vehicle, and Adaline Morrone, 17224 S. Crenshaw, sitting beside her.

According to a witness, the auto driven by Lee rammed the rear of the one driven by Miss Sinderon, when the woman's car had stopped for a traffic signal, at 7:30 p.m. Friday.

Lee's car was damaged to the extent of about \$300, according to a preliminary estimate.

Public Hearing Slated

On Municipal Budget

A first public hearing on the 1955-56 Torrance city budget will be held tomorrow at the City Hall during the regular meeting of the City Council. The meeting is scheduled for 5:30 p.m.

Factory, Homes Send Building Totals Skyward

Another million dollar Kaufman tract and a new paint factory got permits from the City Engineer's office during the first half of June, swelling the year's building totals to nearly \$21 million.

According to Walter Bradford, senior clerk, the totals for the first half of June were \$2,141,600.

Universal Enterprises took out a \$390,000 permit for construction of a paint factory and warehouse, on 190th St., west of Crenshaw Blvd.

Milton Kaufman received permits for 118 more houses in the huge tract between Torrance and Sepulveda Blvds., west of the home.

Permits for 14 new houses near 188th and Fonthill were taken out by Howard S. Miller.

Spots Still Fashionable This Season

More people were crying "Oh, my spotted countenance!" during the week ending June 11, than were crying "Oh, my protruding cheeks."

According to the County Health Department, 32 cases of measles and 28 cases of mumps were reported during the week. All year, measles have led the disease list.

Other diseases in the Torrance area included chickenpox, five; German measles, and whooping cough, each four; scarlet fever, three; and encephalitis, pneumonia, and syphilis, each one.

The city of Torrance had three cases of whooping cough, two of German measles, and one each of chickenpox, pneumonia, and scarlet fever.

Throughout the County, measles is running nearly three times as heavy this year, while cases of mumps are nearly twice as numerous as they were in 1954.

Other diseases in the Torrance area included chickenpox, five; German measles, and whooping cough, each four; scarlet fever, three; and encephalitis, pneumonia, and syphilis, each one.

Stray Bullet Narrowly Misses Head

A bullet fired from a passing automobile Wednesday night missed the head of Mrs. Ellen Sinderon by six inches, as she sat inside her car at 17228 Crenshaw Blvd.

The bullet passed through a window pane, hit a wooden panel of another window of the living room, and ricocheted back into the room. Officers believed the slug to be from a .22 or .32 caliber shell.

Also in the room was Sally Sinderon, 21, daughter of Mrs. Sinderon. There have never been any ill feelings or trouble she told investigating officers.

Chinese Play By Mrs. Weir Wins Trophy

The Danny Thomas Trophy for the best comedy at the recent Pacific Coast Tournament of One Act Plays in Santa Monica went to "Betray No Trust," a Chinese play written by LaVeda Weir, of 905 Calle Miramar.

The play, presented by the Chapel Players, is an adaptation of an ancient Chinese play. Mrs. Weir said, and thus was not entered as an original. However, there was little more to borrow than a list of Chinese names and an idea, she said. There was no scenery, and both property man and reader were on stage.

Under the direction of Don Gish, the Chapel Players won five awards for the play. Only the Santa Monica Theatre Guild won more awards.

Al "Duke" Schneider, of Torrance, won the award for best supporting actor in his role as the young husband.

Mrs. Weir is also a member of the Hampton Players and has been associated with several theatre groups here in Southern California and in her native Kansas City.

Commission OKs 843 New Homes

Torrance's rapidly changing skyline got another boost from the Planning Commission Wednesday night, as five tracts containing 843 homes were recommended for approval.

Biggest among the tracts sent through was a 562-lot subdivision presented by Don Wilson for the Alamo Homes, Inc., for property southeast of Torrance Blvd. and the Redondo Beach city limits. A letter was read from Wilson and Milton Kauffman, promising that turn-around driveways would be provided for homes fronting on Torrance Blvd.

154 Lots Approved

Dartmouth Homes, Inc. got a green light on 154 lots, in tract 21744, located between 182nd and 186th St., east of Prairie Ave providing certain specifications requested by the School Board are met. The property, which adjoins the site of the future Edison School, was approved, if:

1. A six-foot masonry fence is constructed on the north 660 feet of the subdivision, since it borders business property.
2. A chain link fence is put along the east border at the discretion of the School Board.
3. A regulation walkway easement with fencing on both sides is furnished from Florwood Ave. to the school site between the lots south of 155.

Recommended, but not required is that 186th St. be connected with Felbar Ave. to obtain better traffic circulation and a street easement be obtained across the Edison Co. right-of-way.

Tract Approved

The Cimarron Land Co. plans for 57 lots northeast of 186th St. and Tract 16701 were recommended for approval. The tract number is 21588.

Tract 20445, east of Arlington Ave. on either side of the Dominguez Channel containing 45 lots, was recommended for approval, provided: that adequate drainage is furnished, that a chain link fence six feet high be built along the channel, that a solid six foot fence be built by the dairy, that turn-around driveways be furnished on three Arlington lots, and that an extra ten feet be dedicated for widening of Arlington.

Twenty-five lots in tract 19517, southwest of 226th and Ocean Ave. were recommended for approval if all streets in the property are 54 feet wide and if lots 14 to 25 have common corner points. It was presented by James H. Mulligan.

Soil Study Set

Held over for further study of soil and excavation requirements was Norco Knolls, Inc.'s proposal for 57 lots in tract 19308, between Plaza del Arno and Lincoln Ave., east of Border Ave. Subdividers Dan Butcher told the Commission that oil



DANNY THOMAS TROPHY WINNER
... LaVeda Weir Wins Play Award

(Continued on Page 2)