

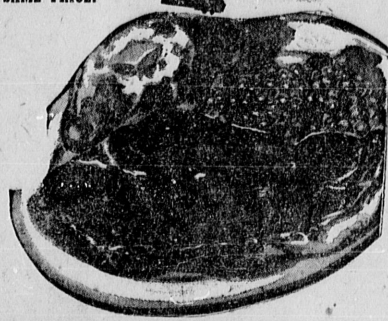
# BARGAINS

OLID VALUES. THIS WEEK - AS USUAL - YOU WILL FIND  
TOWN - HIGHEST QUALITY - ALWAYS LOWEST PRICE

Heart's Delight Tomato Juice Large 46-oz. can <b>19</b>	Redwood Empire Apple Cider Jumbo 1/2-Gal. Jug <b>47</b>
County Fair Frozen Pies 8-Cream 8-Inch pie <b>49</b>	Betsy Ross Grape Juice 24-oz. bottle <b>25</b>

## MARKET TOWN GIVES YOU YOUR CHOICE OF TWO GRADES OF BEEF

WHEN SHOPPING AT MARKET TOWN YOU HAVE YOUR CHOICE OF TWO GRADES OF BEEF. EACH PLAINLY MARKED AND CLEARLY PRICED. WE DO NOT MIX OUR U. S. GOVERNMENT GRADED CHOICE WITH U. S. GOVERNMENT GRADED GOOD AND SELL THEM AT THE SAME PRICE.



CHOOSE EITHER GRADE. MARKET TOWN'S CHOICE BEEF TOPS IN TASTE AND TENDERNESS, OR MARKET TOWN'S ECONOMY BEEF LEANER AND HIGHER IN PROTEIN CONTENT WHICHEVER YOU CHOOSE.

### YOU CAN'T GO WRONG

	ECONOMY BEEF	U. S. CHOICE BEEF
ROUND STEAK	53¢ lb	73¢ lb
T-BONE STEAK or CLUB STEAK	63¢ lb	93¢ lb
PORTERHOUSE STEAK	69¢ lb	99¢ lb
N. Y. CUT STEAK	79¢ lb	\$1.09 lb

**COTTAGE CHEESE** ARDEN'S FULL POUND **23¢**

**TOMATOES** 2 LARGE 2 1/2 CANS **27¢**

**PEARS** 2 LARGE 2 1/2 CAN **29¢**

**KLEENEX** 5 LARGE BOXES OF 300 **\$1**



**CHUCK ROAST** 25¢ lb **35¢ lb**  
**7-BONE ROAST** 29¢ lb **39¢ lb**  
**8-BONE ROAST** 33¢ lb **49¢ lb**  
**RUMP ROAST** 49¢ lb **63¢ lb**

Spicy Shortening, 3-lb. can 88¢ Karo Syrup, 16-oz. bottle 25¢  
 Felt Wax Paper, 125-ft. roll 22¢ Linit Laundry Starch, giant pkg. 38¢  
 Downy Lake Frozen Waffles, 6 in pkg. 17¢ Mazola Salad Oil, full quart 65¢  
 Dial Soap Deodorant 2 bath bars 39¢ Modess Sanitary Napkins, 12 in box 39¢  
 Green Giant Peas, 303 can 20¢ Progresso Tomato Sauce, 3 reg. cans 20¢  
 Hefty Large Ripe Olives, 1-lb. can 28¢ Pacific Sta Crisp Crackers, 1-lb. box 23¢  
 Keweenaw Grape Jelly, 12-oz. jar 21¢ Quick Elastic Starch, 12-oz. pkg. 15¢  
 Jolly Popcorn, 10-oz. can 21¢ Red Heart Dog Food 2 tall cans 29¢

<b>IVORY SOAP</b> 2 LARGE BARS <b>27¢</b>	<b>CHEER DETERGENT</b> GIANT PKG. <b>69¢</b>	<b>DREFT DETERGENT</b> LARGE PKG. <b>29¢</b>	<b>DUZ</b> Does Everything GIANT PKG. <b>69¢</b>
<b>REYNOLD'S ALUMINUM FOIL</b> 75-FT. ROLL <b>69¢</b>	<b>FAB DETERGENT</b> LARGE PKG. <b>29¢</b>	<b>IVORY FLAKES</b> LARGE PKG. <b>29¢</b>	
<b>SURF DETERGENT</b> GIANT PKG. <b>59¢</b>	<b>TIDE DETERGENT</b> LARGE PKG. <b>29¢</b>	<b>VEL DETERGENT</b> GIANT PKG. <b>69¢</b>	

## BONELESS ROLLED BEEF ROAST



**TENDER, JUICY**  
 BONELESS, WASTE FREE, EASY TO CARVE AT ANYONE'S TABLE!  
 ECONOMY BEEF **57¢ lb**  
 U. S. CHOICE BEEF **67¢ lb**

LEAN, TENDER, U.S.D.A. GRADED FRESHLY  
**GROUND BEEF** **19¢ lb**  
 LEAN MEATY **SHORT RIBS**

OVEN READY - NO. 1  
**TURKEYS** **37¢ lb**  
 15 to 20-LBS. AVERAGE

EXTRA SPECIAL - 1-lb. Cello Pkg.  
**SAUSAGE ROLLS** 4 lbs. **\$1**

PAY YOUR UTILITY BILLS AT OUR CONVENIENT CASHIER'S BOOTH

# MARKET TOWN

15017 CRENSHAW Corner Compton Limit Rights Reserved

BIG SALE DAYS—THURS., FRI., SAT., SUN., OCT. 28, 29, 30, 31

## 4 Air Raid Sirens Installed to Alert County During Emergency

An attack warning network of 24 gasoline engine-driven sirens that will blanket the county by an area of approximately 300 square miles — radiating from Los Angeles Civic Center, is being installed by the County Office of Civil Defense.

Thirteen of the sirens are driven by giant 180-horsepower industrial engines that will send the distinctive, low register signal a distance of four miles; the 11 smaller warning devices are powered by 10-horsepower motors that will propel the siren tone for an estimated mile and one-half in all directions.

"Six of the 'super' sirens have already been erected," announced Howard Earl, County Civil Defense chief, "in Downey, Lake Wood, Dominguez, La Mirada, Lomita, and Lennox; the remainder of the warning 'giants' are scheduled for placement in West Hollywood, Montebello, Monterey Park, Rosemead, Baldwin Park, Firestone and the Flintridge-La Canada area."

Altadena, Topanga, Palmdale, Newhall, Santa Fe Springs, Windsor Hills, Puente, Walnut, San Dimas, Charter Oak, and Lawndale are the sites selected for erection of the smaller sirens.

**Designed to Cover Area**  
 "Geographical distribution of the entire signal network," noted Earl, "was made to provide the most effective attack warning to the residential and industrial populations of the incorporated areas of the county, and to augment the existing siren systems in the contiguous incorporated cities."

Equipped with a control switch for local operation and testing, each siren will also contain a standard radio receiver remote control unit to permit the activation from a central headquarters.

The remote system of radio control operation is awaiting approval of the Federal Communications Commission.

Fifty-foot oil derrick-type steel towers provide the support for the county's "super" sirens, with the complete tower and sound unit mounted on a turntable that rotates 360 degrees at one and one-half revolutions per minute. The secondary group of sirens, also of the rotating beam type, will have only the horn secured atop a 40-foot steel pole and the motor placed in a housing at the base. The

electric wiring from the engine will be led through the hollow, telescoped pipe assembly to the sound unit at the top.

**Most in Industrial Areas**  
 "Virtually two-thirds of the siren installations," Earl pointed out, "are located in districts containing aircraft fabricating plants, oil refineries and other industries contributing to the nation's preparedness and mobilization program."

Gen. William Fox, county surveyor and engineer, is supervising the installation of the siren network. Seventy-five percent of the \$200,000 appropriation by the Board of Supervisors for the attack warning system, will be returned to the county from matching funds provided by the Federal Civil Defense Administration and the state OCD.

**Backers Foresee Bonelli Victory**  
 Endorsements from labor, business, teachers, professional men and women as well as more than 120 Democratic clubs and councils are being cited by backers of William G. Bonelli as assurance of his re-election to the State Board of Equalization from the Fourth District.

In a campaign marked by charges and countercharges concerning the Bonelli administration, supporters of the incumbent have continued to be optimistic about the November election and are now forecasting victory for their candidate.

David H. Campbell, Wayne L. McFarland, Norman E. Kramer, and Joe Quinn, all opponents of Bonelli on the primary ballot last spring, have thrown their support to the incumbent, who is running on the Democratic ticket.

"Bonelli's insistence on having no separate campaign, but instead, operating through the normal Democratic channels has brought him praise from leaders of the party," Campbell said, in predicting a victory for the candidate Tuesday.

**PINS OF WIRE**  
 Modern pins made from wire were first produced in France and Germany.

## MONTH-END CLEARANCE

MAPLE DINING ROOM SET—Table, 4 chairs, server & hutch top—Complete	\$99.50
COLONIAL SOFA—Deep coil construction, tall back with wing sides, reg. \$199.00 — NOW	\$129.50
MAPLE BEDROOM SET—In Salem, double dresser, framed plate glass mirror, Hollywood headboard to match — Complete	\$99.50
PACKARD BELL T.V.—Blond 21-in.	\$179.50
SECTIONAL SOFA—Coil unit construction, fully upholstered — 3-Pc. Set	\$99.50
HOLLYWOOD BED—Innerspring mattress, matching box spring, headboard, legs, etc. — Complete Set	\$39.50
MODERN BEDROOM SET—Hollywood headboard and double dresser, includes nightstand — ONLY	\$39.50
TABLE LAMPS—With shades	\$3.95
DRESSER LAMPS—With shades	\$1.95
FLOOR LAMPS—4-way, with shade	\$6.95
LIVING ROOM SETS, Sofa & matching chair, uphol. in frize, all colors — 2-pc. set	\$89.50
FOAM RUBBER PLATFORM ROCKERS—Lge. and comfortable, all colors	\$39.50
WROUGHT IRON LIVING ROOM SETS—2-piece, upholstered — ONLY	\$87.50
KNEEHOLE DESKS—With drawers	\$29.50
STUDENT DESK—In hardwood	\$12.50
CHROME DINETTE SETS—5-pc. set, extension: table & 4 chairs	\$39.50

---

**1954 APPLIANCES** Marked Down For Clearance

Many Brands — All Sizes to Choose

10 1/2 cu. ft. REFRIGERATOR, deluxe	\$239.50
DOUBLE OVEN GAS RANGE, deluxe	\$159.50
AUTOMATIC WASHER, agitator wash	\$109.50

(These Are a Sample of Our Low Prices)

---

BROADLOOM CARPET—Wool or cotton, Square Yard	\$3.69
RUGS — 9 x 12	\$24.95
RUG PADS — 9 x 12	\$4.95
BEDROOM SET—Blond mahogany, lge. double dresser, lge. plate glass mirror, lge. Hollywood headboard, Complete mahogany set	\$99.50
DINETTE SETS — Blond 5-pc.	\$29.50
DINING ROOM TABLES—A give away	\$9.95
LGE. COCKTAIL TABLES — Blond 2nds	\$9.95

Xmas is only 2 months away, only 8 weeks—start planning a gift for your home — USE OUR LAYAWAY PLAN!

OUR STORE IS LOADED WITH SIMILAR VALUES—10% DOWN—TAKE 2 YEARS TO PAY

## Sunny Furniture Co.

"The Store of Dependable Bargains"

3639 West Imperial Hwy. OR. 8-3568  
 (5 Blocks West of Crenshaw Blvd.)  
 Open 9 to 9—Saturdays to 6 Sun. to 5  
 Drive In Parking — Look for the Giant Red Arrow.