

Post Office Opens Mail Service to 16 New Tracts

City to Get Freeway to Mountains

CONSTRUCTION GRANTS TOTAL NEAR MILLION

Nearly a million dollars worth of building permits were issued by the City Building Department during the first two weeks of July, according to Senior Clerk Walter Bradford.

Two tracts, with a total of 57 homes, and plans for four new classrooms and an administration building at Hillside School, 25600 Crenshaw Blvd., brought the total to \$963,180 in permits.

The Ellinwood Corporation, Inglewood, took out permits for 57 tract homes on Newton St., south of Pacific Coast Hwy.

Although far ahead of receipts last year, the number of permits will have to increase considerably during the rest of the month in order to equal the \$2,892,880 worth of new building permits in June.

Ella Mae McLeod Named Queen of Waleria Area

Dark-haired Ella Mae McLeod, 17, won the heart of the audience and the queenship of the Waleria-Pacific Hills area Friday night in a queen contest sponsored by the Pacific Hills Homeowners' Association at the Civic Auditorium.

Pat Wingard, 16, took second place and Betty Eakins, 17, third in the contest for teenagers, in which an audience vote decided the winner.

Ella Mae will receive a large trophy, donated by the Northrop Aircraft Recreation Club, a formal gown, portable radio, course in charm and health, a corsage and a free dinner. Second and third place girls will receive a skirt and blouse, respectively.

The new Waleria Queen will be crowned at a special Coronation Ball Friday night at the Civic Auditorium.

Others in the contest were Maurine Brinkerhoff, 16, Mary Burke, 13, Shirley Hinesley, 13, Gwen Hull, 14, Judith Jackson, 13, Ronee LeMaster, 15, and Diane Puscas, 17.

Mailmen's Assistants Thwarted by Policemen

Vandals apparently wanted to make it easy for people to mail their letters, but police and the Post Office Department didn't approve.

Others removed a mail box from the middle of the intersection of 170th St. and Elgar Ave. Friday. Where it came from has not been determined.

Volunteers to Set Campaign Goal In 1954 Community Chest Drive

Top Community Chest leadership in the Harbor Area representing the 3000 volunteers who will work the campaign this year will decide for themselves what goal they will shoot for this fall. Harbor Area Chairman A. E. Thompson said this week.

The plan is to hold a series of meetings throughout the summer months, in which each division leader will meet with his volunteers.

Division leaders will have the results of past campaigning and

Torrance Herald Special Features

Torrance Tackle Ed Powell, who was named to the All-CIF grid squad in Southern California last fall, may miss the Shrine game next Wednesday evening because of a knee injury. Details on Page 4.

Allied Gardens	3
Clubs	7-8
Criswell	6
Editorials	6
Ellinwood	2
John Beck	6
Sepulveda-Victoria	6
Society	7-8
Sports	4
Tor-Nido Tibbits	3
Want Ads—Classified	9-10-11

ESTABLISHED 1914

TORRANCE HERALD

PRINTED AT 1619 GRAMERCY AVENUE IN TORRANCE

Published Sunday and Thursday—Entered as second class matter Jan. 30, 1914, at postoffice, Torrance, California, under Act of March 3, 1879.

40th Year—No. 57

TORRANCE, CALIFORNIA, SUNDAY, JULY 18, 1954

PHONE FAirfax 8-4000

12

12 PAGES

Heat Hits 91, Relief Seen in Showers



"GET BETTER SOON" . . . Traffic Officer A. L. Jackson inspects one of the many get well cards he has received from friends as his nurse, Mrs. Mary Sawyer, looks on, Jackson is improving after suffering a skull fracture, compound fracture of the leg, and other injuries when struck by a car early Wednesday morning. He was carried 52 feet on the front of the car.

Officer Better After Accident

Torrance Police Officer A. L. Jackson, injured early Wednesday when struck by a car, was improving and "resting comfortably," officials at Torrance Memorial Hospital announced.

He received a skull fracture, head injuries, and a compound fracture of the left leg when struck by a car driven by Gerald Glen Smith, 30, a sailor stationed at Long Beach. He was carried 52 feet by the car.

In the meantime, Smith was arraigned at Inglewood Municipal Court Thursday morning, and will have a preliminary hearing Monday at 9:30 a. m. at South Bay Municipal Court. He is charged with drunken driving in which an injury is involved.

Smith's companion in the car, Robert Lee Cole, 26, a shipmate, was charged with drunkenness in South Bay Municipal Court. He was fined \$25 after pleading guilty. Smith was driving Cole's car.

It's No Longer A Man's World

A Torrance woman, Mrs. Norma Padron Lopez, 20, and a female chum, Mrs. Gloria Glendenning, 23, Long Beach, are proving that fewer and fewer jobs which used to be reserved exclusively for men are sacred nowadays.

They are members of a crew which is busy painting a 168-foot water tower in Minneapolis, Minn. Mrs. Lopez, the mother of a two-year-old boy, Bobby, flew together with Mrs. Glendenning to Glenwood, Ia., where they joined the crew headed by the Long Beach woman's step father.

Mrs. Lopez was employed by a local firm before leaving Torrance last May. Her boy is staying with her mother, Mrs. Cenovia Padron, 21512 Vera St.

The women don't regard their occupation as particularly hazardous, and go to the movies for relaxation. Mrs. Lopez will return to Torrance in September, her mother said.

Rain May Fall Today, Heat 91 Yesterday

Some relief from the steam heat that bathed Torrance in 91 degrees yesterday was foreseen today by the Weather Bureau, which predicts possible showers and increasing cloudiness today.

Even though rain may fall, the humid warmth will continue, with a high of around 90 predicted.

Torrance's temperature leaped from an 83 on Thursday to 89 degrees on Friday and 91 early yesterday afternoon—hottest day here since Feb. 13, this year, when the mercury hit 92.

36th day in 90's

It was the 36th day since 1946 that the heat had hit 90 degrees or over in Torrance, according to Fire Department statistics. Since Jan. 1, 1946, the mercury has hit a blistering 100 degrees or over only four times.

The highest of these 100 degree days fell on Oct. 13, 1950, when 104 degrees in sun blasted from the relentless skies.

Last year's high for July 17 was a mild 78 and in 1952, a cool 72.

The humidity continued to climb yesterday, shrouding the streets in invisible, muggy blankets.

Over the nation, cool air and showers helped stem the heat wave after a week of oven temperatures claimed more than 200 lives. Missouri was the hardest hit, with 79 deaths blamed on the heat.

Family Hurt In Car Crash

A family of three suffered injuries Friday when a car driven by Stewart E. Wescott, 30, 2805 Martha St., collided with one driven by Eva Lee Bailey, 39, 2245 W. 223rd St.

The accident occurred at the Western Ave. entrance to Douglas Aircraft. Wescott suffered head and face injuries; his wife, Merle Ann, 27, received a broken nose and other injuries, and their 14-month-old daughter, Susan, had minor injuries.

Damage to both cars was extensive. The Wescotts were taken to Harbor General Hospital for treatment.

Postmaster Outlines New Mail Delivery Services

An extension of mail delivery services to 16 new tracts will begin here on July 27. It was announced here yesterday by Postmaster Clara A. Conner.

Letters will be distributed to the new residents, starting on July 20 and extending throughout the week, to explain the rules and regulations that they should follow.

Postmaster Conner went on to say that there were certain things that the occupants must do to insure delivery by their local postman.

Door Service with delivery to door:

1. Acceptable walks from street paving to house.
2. Approved mail receptacle or slot erected not less than 30 inches above floor where carrier stands to serve box.
3. House numbers on the house (not on curb).
4. Mail receptacle and house numbers should not be obstructed by plants, shrubs, milk bottles, children's toys or other obstacles.
5. Patrons should keep up dogs in accordance with the current "Leash Ordinance." Carriers cannot be required to make deliveries where dogs are allowed to run at large.

Box Delivery

For mounted delivery with box at the curb:

1. Box should be approved rural type erected at curb line so carrier can serve without leaving truck or getting truck stuck.
2. Bottom of box should be 50 inches above street surface where truck travels.
3. Name and address in letters 1 inch high should be painted on approach side of box.

Foot carrier with delivery to door by Carrier Route No. 483. To 22800, 22900, 23000 blocks S. Kathryn, S. Evelyn, S. Anza. To 4100, 4200, 4300, 4400, 4500 blocks W. 229th, W. 231st and W. Sharyn Lane.

Foot carrier with delivery to door by Carrier Route No. 482. To 22500 and 22600 S. Lupine and S. Ellinwood; 4900 and 5000 blocks W. Reynolds.

Service Changed

Service will be changed from mounted carrier with delivery at curb to foot carrier service with delivery to the door by Carrier Route No. 317. To 600, 700, 800, 900, 1000, 1100, 1200 blocks W. Ocean; 800 W. Belson; 800, 900, 1000, 1100 W. 229th; 1000, 1100 W. 231st; 900 and 1000 blocks W. 227th; 900, 1000, 1100, 1200 W. 226th; 22600, 22700 S. Orchard; 22600, 22700, 22800, 22900 and 23000 S. Menlo; 22600 a n d

Coast Sales Contest Won By Maples

Oscar Maples Ford Agency this week was named one of four top winners on the entire West Coast in Ford car and truck sales in a national selling contest.

The dealer, who recently took over the Schultz and Pechham agency at 1420 Cabrillo Ave., will be awarded a trip to Havana, Mexico City, Bermuda or Banff, Canada, and his new and used car sales managers have been presented trips to Mexico City.

Maples, plus new car Sales Manager Vel Miletich and used car Manager Byron Harry, will receive expense paid vacations for two weeks for their salesmanship.

The agency won the honor by hitting over 325 per cent of its quota in the "National Tournament of Selling Car Champions." Maples was barely edged out for

Walks Slated For Highway

An immediate move to get crosswalks across busy Pacific Coast Hwy. was promised this week by Assemblyman Vincent Thomas following a meeting with Councilman Albert Isen, City Manager George Stevens, and Assistant Division Engineer A. D. Griffin, of the California Division of Highways.

Meeting in Waleria Thursday afternoon to survey the situation, Assemblyman Thomas and the city officials wound up their discussions by agreeing that a crosswalk might be needed across the highway at Neece Ave.

"I was very enthused about the interest shown by the Assemblyman and Mr. Griffin," Councilman Isen said.

Seaman Hall Serving On Destroyer Radford

Seaman Carl L. Hall, son of Mr. and Mrs. Arlie O. Hall, 21505 Berendo Ave., is serving aboard the escort destroyer, USS Radford.

A-Bomb Exit Set For Area

Plans for a major east-west freeway from Torrance to the mountains moved forward this week when the State Highway Commission adopted the routing of an east-west artery to carry traffic on US 60 through Riverside and declared five miles of Artesia Blvd., which joins 174th St., as a freeway.

The 174th St. project, when completed, will give Torrance residents their first and only escape route to the desert or mountains in case of an atomic attack. No other east-west major route exists to move local residents out of the Los Angeles Basin in case of disaster.

Through Normandie

174th St., a four-lane divided highway, has been completed to Normandie Ave. The State plans to improve the five miles of the roadway from Normandie Ave. to Santa Fe St. into a freeway, giving local motorists a straight route through to Fullerton, and a link with Hwy. 60 over what is now known as Artesia Ave.

Highway 60 leads to either the mountains, via San Bernardino, or the desert and Palm Springs area, via Riverside.

Want Del Amo Linked

At the same time, local pressure is being generated to link the isolated strips of Del Amo Blvd. that lie within Torrance, and push the street through to join its four-lane, divided cousin that stretches beyond Atlantic Blvd. in North Long Beach.

Making the sections of Del Amo into one whole street within the city would mean cutting through the south side of the General Petroleum property and through 203rd St. in the Pueblo.

Much of the land has been deeded for street purposes and it is now just a matter of putting the issue across.

Need North Entry

Desperate need for another access to Torrance proper from the north has boosted efforts to open up Arlington Ave. from North Torrance into Torrance. The street now ends at 190th St., and picks up again at Del Amo. A strip of land has been set aside for the eventual joining of the street between General Petroleum Corp. and Bethlehem Steel.

The only roads entering Torrance proper from the north now are Crenshaw Blvd. and Western Ave., both heavily traveled.

To Widen Alternate 101

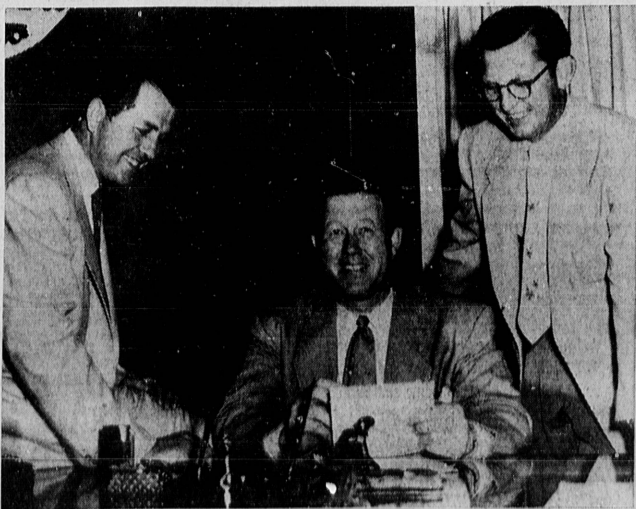
In other moves, the Highway Commission allocated \$15,000 for the widening of Alternate 101 near Torrance.

In recommending action on the Artesia Blvd. section, Highway Engineer George T. McCoy said plans call for development of the five miles as a freeway. The two sections of the boulevard are now closed, with construction of a four-lane, divided highway underway. It will finish 174th St.

Firemen Help In PV Blaze

Two engines from Torrance were called Friday to help put out a 10-acre grass fire in the Palos Verdes Hills.

Apparently started by a cigarette, the fire was fanned by a breeze which for a time threatened 20 homes in the Malaga Hills. Six fire departments from the surrounding area put out the fire in about an hour and a half.



VACATION BOUND . . . Courtesy of the Ford Motor Car Co., the trio shown above will take two-week, expense paid trips this summer as reward for winning top honors on the West Coast in a national Ford sales contest. Vel Miletich, left, new car Sales Manager at Oscar Maples Ford Co. here, will journey to Mexico City as will used car Sales Manager Byron Harry, right. Oscar Maples, center, gets his choice of a trip to Havana, Mexico City, Bermuda or Banff, Can.

TORRANCE

DOLLAR DAYS

— 2 BIG DAYS —

FRIDAY and SATURDAY—JULY 23-24

READ YOUR THURSDAY

TORRANCE HERALD

FOR ALL YOUR

DOLLAR DAY BARGAINS